

Public Parade

Continued from page 1 story short, we got the loan, paid the movers and were officially Edentonians.

There was one stipulation to the loan, other than repay it. It was that we were never to tell who was responsible for making it possible for us to move to Edenton (Sorry about that George!)

Graham White lost his eight-month battle with cancer Sunday morning. There will be no more "RGW" initials of approval of financial papers along the Public Parade. But his impact on the community will be sorely missed.

Graham White was no easy touch as a banker. He didn't like "deals" or "schemes". But he let you down easy. He made you almost want to thank him for not making a loan sometimes. And more often than not his suspicion proved to be true.

Graham White was a man of compassion. His cup runneth over with love for family, church, friends and community. Yes, he was more than a banker, Graham White was a patriot.

What more than that can be said of such a man of character and dignity?

Rain Date

The New Directions singing group, one of the most popular in the country, plans to appear at Hicks Field along the Public Parade Saturday night. This is, if it doesn't rain.

In case of rain arrangements have been made for the 8 P.M. performance to be in Swain Auditorium.

A photograph and additional information is on Page 6-B.

Keeping Pace

Albemarle Electric Membership Corporation, which serves thousands of customers along the Public Parade continues to expand; meeting the needs of the growing Albemarle Area of Tar Heelia.

It is fitting that this new surge of growth is being directed by Ed Brown, AEMC executive, at the time when he is president of the 10-county Albemarle Area Development Association.

AEMC, headquartered in Perquimans County, has recently been awarded a \$901,000 loan from the U. S. Rural Electrification Administration. This loan will finance 70 per cent of an expansion project. The remaining 30 per cent will be obtained from the National Rural Utilities Cooperative Finance Corporation.

The expansion includes service for 640 additional customers, 23 miles of distribution line and various system improvements.

When the project is completed the EMC will be serving about 7,200 customer-members over 870 miles of line in portions of five counties -- of course one is Chowan.

Ed Brown and the AEMC are real assets to the Albemarle Area. It would be foolish to attempt here to document the many, many accomplishments. It is save to say, however, that this sector of Tar Heelia is a better place to live, work and play because of AEMC.

People who do not mind their own business are rarely equipped to take care of other people's problems.



Mrs. Helen Hollowell

Mrs. Hollowell Appointed

Mrs. Helen Hollowell of Tyner has accepted the appointment to the Democratic Party Committee for the Problems of the Aging. The announcement was made by Russell Walker, party chairman.

"We are grateful for the support of fine Democrats like you, and we believe that the activities of this committee will make a great difference in the party's ability to establish its record and serve our aging population with better efficiency," Walker wrote.

The next meeting of the committee has been set for September 21 at 10 A.M. at the Goodwin House in Raleigh.

The membership of the committee is charged with the authority to formulate positions on issues affecting the aging citizens and to issue public statements so that the position of the Democratic Party is made clear to the people of North Carolina.

Mrs. Hollowell is chairman of the Center Hill Democratic Party precinct. She holds various offices in community activities and is a member of Center Hill Baptist Church. She is employed with Mutual of Omaha Insurance Company.

Summer Cruises Are Planned

The Edenton Yacht Club's summer cruising schedule climaxes its season with two events.

A cruise to Columbia is set August 21 and 22 where a pig pickin will be held and sponsored by the Columbia fire department. This has always been a most enjoyable event and the hospitality of Charlie and Midge Ogletree most gracious.

The last cruise will be to Manteo September 5-7. Seafood hors d'oeuvres will be served on the waterfront. The mayor has indicated a desire to welcome us at which time we will present Manteo our club burgee. We also appreciate their hospitality.

The vice-commodore for cruising, Bev. and Fritz Smith, have done an outstanding job this year and deserve much credit, according to a spokesman.

The great decision in life is often whether to lead a selfish life, and amass material wealth, or whether to enjoy life and people and help others.

Committee Formed To Increase Public Awareness

A Best Management Practices (BMP) conservation tour of Southampton farms on August 11 marked the kickoff meeting of the Chohan Challenge Committee (Ch2C). This group has been formed by the Virginia State

Water Control Board's 208 State Policy Advisory Committee specifically to increase public awareness of and involvement in the nutrient overenrichment problems in the Chowan River

Basin. Members of this committee will investigate a variety of innovative approaches to encouraging increased use of agricultural and forestry Best Management Practices in the Chowan River Basin. The farm tour, attended by over 75 invited guests, included observation of a number of BMPs particularly appropriate to this Chowan River Basin county - including conservation tillage, a graded waterway, an erosion control structure, an anaerobic swine waste lagoon, and forestry

management practices. The tour was hosted by the J. R. Horseley Soil and Water Conservation District.

Preliminary studies indicate that nutrient overenrichment in the Chowan Basin, which was led to occasional summer algal blooms in the Chowan River in North Carolina, is aggravated by a variety of man induced factors, including nonpoint sources from forestry operations, animal waste and crop production runoff, and municipal and industrial point sources.

Rep. James Elected Vice Chmn.

CHARLOTTE — Rep. Vernon James (D-Pasquotank) was elected vice chairman of the Committee on Agriculture and Rural Development of the Southern Legislative Conference here Monday.

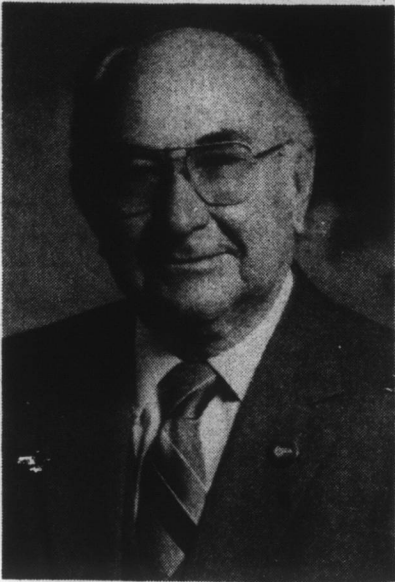
The committee is comprised of leading agricultural legislators and state commissioners of agriculture from 15 Southeastern states.

N. C. Commissioner of Agriculture Jim Graham, who attended the meeting, praised James, who also serves as chairman of the House Agriculture Committee in the North Carolina General Assembly.

"It is only appropriate that the leadership of Chairman James be recognized because of the outstanding contributions he has made to agriculture," Graham said.

The SLC Agriculture and Rural Development Committee is the forum where emerging agricultural legislative issues are

discussed. This process ultimately has a significant impact on the tone and kind of agricultural legislation acted on by the individual states.



Rep. Vernon James

Forestry Program Proven Success

The N. C. Forest Development Program initiated in 1979 to encourage woodland owners to reforest their cut-over woodland is swamped with requests. The program is set up to reimburse qualified woodland owners up to 60 per cent of their reforestation costs on a maximum of 100 acres per year. Requests for cost-share assistance are accepted throughout the year by the local N. C. Forest Service Rangers.

Roger Spivey is the Chowan County Forest Ranger. His office telephone number is 482-4554. In July of each year the funds, which originate from the North Carolina government and an assessment of forest products, are allocated on a first-come first serve basis.

For forest management information call Ranger Roger Spivey.

Mr. White, 55

Continued from page 1

Morganton.

He was an active member of St. Paul's Episcopal Church where he formerly served on the vestry and was a former church treasurer.

Pallbearers were: Clarence Leary, Jr., J. Gilliam Wood, George Alma Byrum, W. P. Jones, Thomas Shepard, Dr. Edward G. Bond, Wesley Chesson, W. B. Gardner, J. H. Conger, Jr., and Bruce F. Jones.

Williford - Barham Funeral Home was in charge of arrangements.

The family requests that memorial contributions be made to St. Paul's Episcopal Church or the American Cancer Society.

NOTICE

Large trash containers located near business establishments in Edenton are privately owned and are for use by owners exclusively. They are not for public use. We ask the public to please refrain from using these containers to dispose of their trash.

Town of Edenton, N.C.
Aug. 20, 27, chg.

PRE-SEASON COMBINE SALE

New - 1981 - John Deere
Corn Soybean Combines

6620 - (SN453432H).... \$55,215
6620 - (SN453435H) .. 52,472
6620 - (SN454891H) ... 52,664
7720 - (SN458610H).... 60,433
7720 - (SN459535H).... 60,197

Also - Used 4400's and 7700's

COASTAL
FARM EQUIPMENT, INC.

Sunbury, N.C.

919-465-8611

The Chowan Herald (USPS 106-380)

P.O. BOX 207, EDENTON, N.C. 27932

Published every Thursday at Edenton by The Chowan Herald, Inc., L.F. Amburn, Jr., Editor and Publisher, 421-425 South Broad Street, Edenton, North Carolina, 27932.

Entered as second-class matter August 30, 1934, at the Post Office of Edenton, North Carolina, under Act of March 3, 1879.

L.F. AMBURN, JR.
Editor & Publisher

E.N. MANNING
General Manager

SUSAN BUNCH
Office Manager

J. EDWIN BUFFLAP
Editor Emeritus

Subscription Rates

One Year (outside N.C.)	\$10.00
One Year (in N.C.)	\$9.36
Six Months (outside N.C.)	\$6.50
Six Months (in N.C.)	\$6.24

Edenton, North Carolina, Thursday, August 20, 1981

WE OFFER A
"GIANT" CHOICE

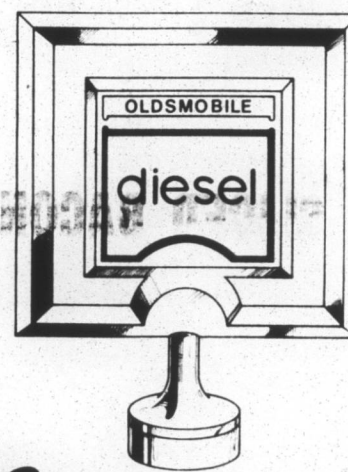
MERCURY
OUTBOARDS

RANGER, GLASTRON,
GALAXY

TRI-HAWK BOATS & COX
TRAILERS FROM OUR

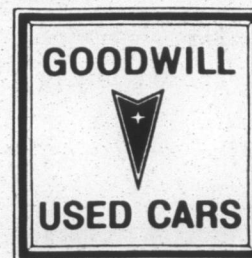
"GIANT"

MARINE DIVISION



Oldsmobile

Have one built for you!



Trucks are what we're all about.



GM QUALITY
SERVICE PARTS
GENERAL MOTORS PARTS DIVISION

VISIT THE HOME OF THE ★ GM ★ GIANT



HOKE MOTOR CORP.
EDENTON 482-8421
N. Broad St. Ext.