

Power Agency Sign-Up Gains Momentum

RALEIGH — The halfway point has been passed in the sign-up by 36 municipalities to participate in N. C. Municipal Power Agency Number 3's (NCMPA 3) proposal to own generating facilities jointly with Carolina Power & Light Co. (CP&L), NCMPA 3 General Manager Ralph W. Shaw announced Friday.

Edenton joined September 15. Since the NCMPA 3 Board of Commissioners approved the project on July 30, 12 municipalities have voted to participate, Shaw reported. Their combined share of the power the agency will own equals 60.5 per cent of the negotiated total purchase amount.

In order to complete its arrangement with CP&L, the Power Agency's members must agree to purchase a minimum of 65 per cent of the negotiated total. That minimum was expected to be exceeded by Tuesday, Shaw said. Several municipalities have scheduled action on the matter for Monday and Tuesday.

"We hope to have 100 per cent participation," Shaw said, "and I believe it is conservative to predict a sign-up of 95 per cent or

more." Nearly all of the NCMPA 3 member municipalities will have acted by October 1," he said. The decision deadline is October 21.

Those that have already notified the agency staff that they have voted to participate in the project in addition to Edenton are: Scotland Neck, Wilson, Kinston, Smithfield, Hamilton, Robersonville, Wake Forest, Washington, Louisburg, Tarboro and Greenville. No municipality has voted not to participate.

If all of the Agency's members vote to participate in the project, NCMPA 3 will purchase from CP&L an 18.7 per cent interest in the two generating units at the Brunswick Nuclear Plant near South port; 13.2 per cent interest in Unit 4 at the Roxboro Plant, which is a coal-fired generating unit; 16.5 per cent interest in the two coal-fired units under construction at the Mayo Plant near Roxboro; and a 16.5 per cent interest in the four units under construction at the Harris Nuclear Plant south of Raleigh.

The Agency's target date for the initial closing on the purchase is December, 1981. The agency's consulting

engineer has estimated that it will require the issuance of \$1.2-billion in revenue bonds to close the purchase with CP&L. All of the bonds will be issued by the Power Agency through the N. C. Local Government Commission. The total amount of bonds that will have to be issued by the end of the construction period (1993) has been estimated at more than \$4-billion, assuming that all of the unfinished units are completed and put into commercial operation according to CP&L's present construction schedule.

Projected savings in future power costs to the agency's member cities have been estimated to exceed \$1.75-billion through the year 2003. Over the life of the bonds those savings are projected to exceed \$7-billion. The projected savings will result primarily from the Agency's ability, as a non-profit municipal corporation, to issue tax-exempt bonds to help finance the construction of generating facilities by CP&L.

Of the agency's 36 members, 14 are now wholesale power customers of Virginia Electric and Power Co. (Vepco), and 22

are served at wholesale by CP&L. At the time of the closing with CP&L, those cities that have voted to participate in the joint-ownership project will switch power suppliers to Agency 3, including those cities in the Vepco service area.

NCMPA 3 has negotiated an arrangement with Vepco under which the company will transmit Agency 3 power over its system to the cities it now serves at wholesale.

Letter To The Editor

In reference to Mike White Youth Center that recently closed.

The facts are Mr. Jernigan could have kept the center opened at the park for the children here in Cape Colony. But we could not open it up to the public. We are insured as a private organization and must keep it as such. However he was allowed two guest at a time.

We Miss Baker, must abide by rules too. I am sure the seven people for it were not fully informed.

If a youth center is opened again next summer the same rules must apply.

Supervision is always encouraged both inside and outside the buildings.

Lia McDaniel
President
Cape Colony Association

Dental floss makes excellent material for trussing poultry, especially for barbecue grilling. The floss does not burn and is very strong.

In Memory

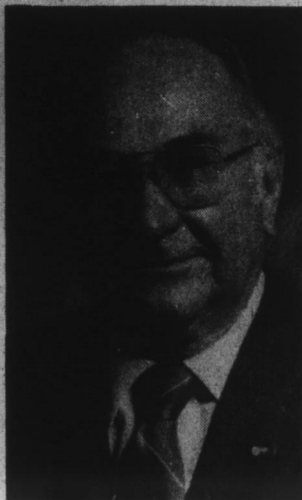
Of

Juanita Bunch White

I would like to express my thanks & appreciation for all the acts of kindness and concern in my time of need.

Carolyn Raines

No calls for pet grooming until after Oct. 15th.



Rep. Vernon James

Rep. James New Chrmn.

RALEIGH — House Agriculture Committee Chairman Vernon James of Elizabeth City has been elected chairman of the State Farm Operations Commission which oversees the operation of state-owned farms in North Carolina.

James succeeds Sen. Vernon White who stepped down from the position because of new responsibilities associated with his recent appointment to the North Carolina Board of Agriculture. White has served as chairman of the commission since its inception in 1974.

The seven-member commission sets policy for ration of the five former state institutional farm units which were placed under the N. C. Department of Agriculture by legislative action in 1974.

James, a farmer and agribusinessman from Pasquotank County, has served seven terms in the N. C. House of Representatives. He represents the First District which includes: Currituck, Camden, Pasquotank, Chowan, Perquimans, Washington, Tyrrell and Dare counties.

James will serve as chairman of the State Farm Operations Commission as long as he is chairman of the House Agriculture Com-

Continued On Page 2-B

Meal Revisions Are Considered

WASHINGTON, D. C. — The U. S. Department of Agriculture is proposing revisions in meal pattern requirements for federally-assisted school food programs to simplify meal requirements and help reduce costs.

"The proposed changes are designed to maintain the nutritional balance of the oldest federal feeding program in the country, while at the same time providing state and local officials more flexibility in controlling costs and simplifying administration," said Mary C. Jarratt, assistant secretary for food and Consumer services.

The new meal patterns are designed in part to reduce meal production cost of a school lunch—between 8 and 10 cents—thereby offsetting a portion of the reduction in federal subsidy resulting from the enactment of the Omnibus Reconciliation Act of 1981.

Jarratt said the proposal would:

--simplify program administration by reducing the number of meal patterns

from five to three. The patterns would no longer be tied to children's specific ages or grades, but would be broadly defined as "preschool, elementary," and "secondary." States or local programs would be allowed to use their own definitions of these three categories, basing their determinations on the ages of the children they serve.

--make meal pattern portion sizes consistent for the school lunch, school breakfast and child care programs.

--reduce the minimum quantity of food that is required to be served in order to reduce plate waste or meal costs, and effect cost savings at the local level. Schools and child care institutions would still be required to offer foods from each of four food components: meat or meat alternate; vegetable or fruit; bread or bread alternate; and milk.

--expand the list of allowable meat alternates to include food items such as nuts and seeds, yogurt and tofu. These foods would be

added in response to public requests, and in an effort to increase flexibility in menu planning for schools and institutions.

--allow any food containing enriched or whole-grain flour or meal; or enriched, whole-grain or fortified cereal as its primary ingredient, to contribute to the bread-bread alternate requirement. All foods on the list of acceptable bread-bread alternates also would be allowed to contribute toward the bread-bread alternate requirements in any child nutrition program.

--delete the current requirement for schools to serve lowfat milk, and place the decision as to type(s) of milk to be served at the local level. Schools and institutions also would have the option to offer yogurt as a milk alternate as well as a meat alternate. These changes would increase flexibility and simplify program administration.

While required amounts of foods have been reduced, Jarratt said, meals based on

Continued On Page 2-B

CHOWAN COUNTY FAIR

SEPT. 22 - 26

EXHIBIT ENTRY

Sunday - Sept. 20 - 3 to 5 P.M.

Monday - Sept. 21 - 9 A.M. to 6 P.M.

STUDENT DAYS Free Times

Tuesday - Sept. 22 - 3 to 7 P.M.

Wednesday - Sept. 23 - 3 to 7 P.M.

All Students K thru 12th Grade

NIGHTLY ENTERTAINMENT

Highway 175. Bus. Edenton

Marshall S. Redding M.D., FACS

The Albemarle Eye Care Center, Ltd.

Announces Additional Office Hours Every Friday

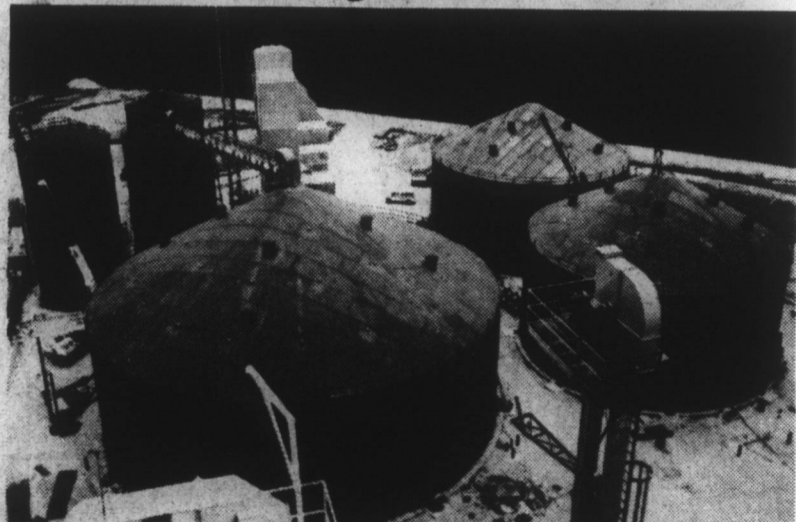
Beginning August 21

Virginia Rd.
Edenton, N.C.

Hrs. By Appointment
8:30 - 4:00

919/482-7245

Squeeze the most out of your corn



Sell directly to us and receive competitive prices. Perdue has just expanded its storage capacity by twelve times to over 1,000,000 bushels—one of the largest storage complexes in North Carolina! In addition, we've added new drying equipment to handle even the highest moisture grain. What all that means for area farmers is

- Competitive Prices
- Accurate Weights and Grades
- Improved Facilities for Rapid Unloading
- Convenient Hours 6 Days/Week
- Courteous Service and Improved Payment
- Free Refreshments with every Grain Delivery

You'll always have a place to unload at Perdue's Cohfeld elevator. Call 358-0311 for more details.

PERDUE

Belk Tyler
downtown edenton

save 20%
3 days only

THURSDAY, FRIDAY, SATURDAY

every Arrow
Cotton-Ease™ men's
shirt in stock

13.60 to 17.60

regularly 17.00 to 22.00

Wonderful opportunity to fill in your Arrow shirt supply with this special saving on easy to care for cotton dress shirts. Comfortably cool, soft, absorbent Arrow Cotton-Ease™ treated with Sanfor-Set, comes out of the dryer ready to put on with little or no ironing. Tailored the Arrow way with slightly shaped "gentleman's fit" body cut, single needle tailoring, neat permanent stay collar. White, pastels, stripes. Everything is luxurious except the price. 14½-17½ neck sizes.

"At A Time When Prices Are Going
Up Belk Tyler Brings Prices Down"



Shop Monday Through Thursday 9:30 A.M. Until 5:30 P.M., Friday 9:30 A.M. Until 9 P.M., Saturday 9:30 A.M. Until 6 P.M. Phone 482-3221 Or 482-4533.