

Capital Credit Refund Announced By Albemarle EMC

Announcement of a capital credit refund to members amounting to \$52,135 and the election of three directors highlighted the 34th annual member meeting of Albemarle Electric Membership Corporation held October 10, at Perquimans County High School in Hertford.

Members receiving service in 1966 and 1967 were told they could expect to receive their capital credit checks in the mail within the next two weeks. The announcement was made as part of the report of members by Edward E. Brown, Jr., General Manager.

Two incumbent directors, L. A. Harris, Jr., Route 4, Elizabeth City and A. T. Lane, Sr., Route 1 Hertford, were re-elected. The third member, Mr. Billy R. Nixon of Tyner, was elected to the seat which Joseph A. Wiggins held. Mr. Wiggins did not seek re-election.

Brown, in his report to the members, explained what members could expect in future power costs and reported the activities of the Cooperative's statewide power representative, North Carolina Electric Membership Corporation, to hold power costs as low as possible.

In his report he referred to the fact that electricity has escalated steadily and considerably since 1973 and a continuation of that trend can be expected.

He referred to the Annual Report which stated "In the next few years, certainly by the end of this decade, wholesale power costs will be in the 10 cents per kilowatt-hour range, and by then 1,000 kilowatt-hours will cost members \$120.00 or so."

Brown reported that there are options open to the EMC through the N. C. EMC in trying to hold power costs as low as possible and that

they, the EMC, have exercised some of them.

Albemarle EMC along with 26 other EMC's in the state are members of the North Carolina Electric Membership Corporation which represents them in wholesale power matters, and the N. C. EMC is striving to provide all of their power needs.

An option the EMCs had and took was buying a portion of Duke Power Company's Catawba nuclear generating station which is being constructed on Lake Wilely just below Charlotte, North Carolina. The project represents an investment by the 27 EMCs of almost \$1-billion and is expected to help stabilize the cost of power in the years to come.

Brown went on to say that the EMCs have been negotiating with Veeco for the past three years regarding possible joint ownership of its nuclear plants, but so far we have not been able to find feasibility in the negotiations.

The general manager said, "As for Carolina Power and Light Company, we are interested in joint ownership of that company's fossil and nuclear plants which might very well be used to replace the power presently received from Veeco. At the

same time, however, we have to resolve an anti-trust suit against CP&L brought on by the EMCs in North Carolina."

He noted that peat is an option but thus far the economics of that option do not compare favorably with joint ownership of existing and planned generating plants of companies like

Duke Power, CP&L and possibly even Veeco.

One way to offset increasing cost of energy is to weatherize your home, and we will assist you with home energy audits at no charge.

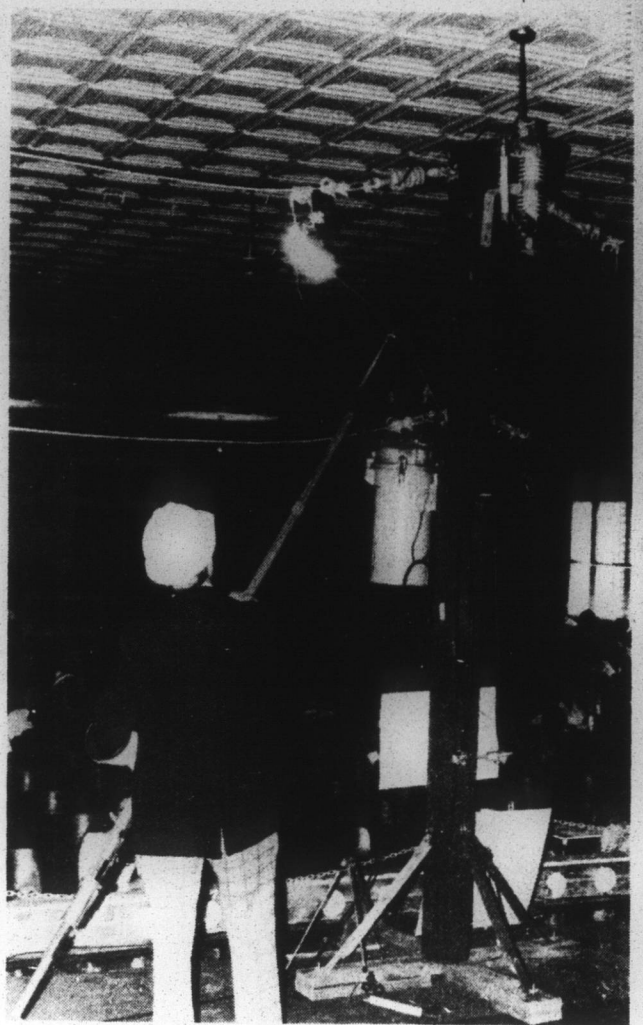
One lively part of the meeting was seeing 7200 volts of electricity dancing

through the air. The EMC put on a live line voltage demonstration which showed the dangers of high voltages. The demonstration used equipment which was set up as a Mini Albemarle EMC Distribution System which included safety equipment and devices. The EMC servicemen made a point by showing those present what 7200 volts will do to a hot dog as well as a man.

Prior to the meeting, roughly 150 members took part in a free Health Screening Clinic in which members blood pressure were taken by six medical students from the North Carolina Student Rural Health Coalition.

Two other agencies were on hand to assist members on weatherization and solar. The local E.I.C. had staff and employees on hand to discuss weatherization, head start and rental assistance.

The Solar Greenhouse Employment Project had representatives, Paul Konove and Bill Dow on hand to explain the advantages of building and using solar energy. A display was shown in which members can build their own solar panels.



LIVE WIRE DEMONSTRATION — Bob Brooks, the operating manager for Albemarle EMC, shows members what 7200 volts looks like. The EMC put on a safety demonstration showing the dangers of 7200 volts when T. V. antennas, ladders, kites, and people come in contact with live line voltage.

Another great idea from Quasar

Super Sound! Super Value!

That's fantastic! That's Quasar.

NEW!

Model CS7400

Quasar CS7400 AUDIO SYSTEM

- Front Load Cassette Record/Playback System
- Dolby Noise Reduction System
- Multi-function LED Vu Meters
- Left and Right Record Level Controls
- 3-digit Tape Counter
- Automatic Changer with Magnetic Cartridge
- Accurate tracking and excellent sound reproduction from low mass S-shaped tone arm with adjustable anti-skate
- Automatic shut-off. Holds stack of six records.
- 3-Way Multi-Tuned Port Speaker System
- 8" woofer, 3 1/2" mid-range and 2 1/2" tweeter in each speaker cabinet for full, rich sound reproduction
- 3-position high frequency level control
- AM/FM-Stereo Radio

NOW ONLY \$468.00

Easy Terms

CARPET AND APPLIANCE PLAZA

482-4515 downtown edenton
Your Chamber of Commerce Works For You.

Cancer Risks Are Studied

What's the major cause of lung cancer? Cigarette smoking. But even if you have certain characteristics as a smoker, characteristics called 'risk factors', you won't necessarily develop lung cancer if you quit now.

Some of these risk factors are: being a heavy smoker over age 50, having smoked a pack a day for twenty years, a history of smoking from age 15 or before, being a smoker working with or near asbestos.

Let's say one or more of these apply to you, there's still no need to worry, if you make up your mind to quit. To help you, the American Cancer Society sponsors "Quit Smoking" clinics, clinics that have been surprisingly successful. It's just one of the programs designed to fight cancer, and they need your support. Soon a volunteer will be coming to your door. When that happens, we hope you'll make a generous contribution. Remember, it's your American Cancer Society.

"Shop at Elliott Company for your Arrow Shirts. Buy two and get a \$10.00 gift certificate on another Arrow shirt."

ARROW CHEVELLA

Classically rugged yet refined

Handsome, tasteful plaid designs are elegant enough to be worn indoors as well as outdoors. Comfortable too, in a lightly brushed natural blend of 70% cotton, 30% polyester woven twill fabric. Matched center pleat and pocket. Choose from our wide selection of colors and patterns.

The first great designer label worn by half the men in America.

Elliott Company

Downtown Edenton

GOOD YEAR HURRY! SALE ENDS Oct. 21, 1981

INVENTORY CLEARANCE SALE

FREE WESTERN VEST
WITH PURCHASE OF 4 WRANGLER LIGHT TRUCK AND RV RADIALS

COMPUTERIZED WHEEL BALANCING \$3.99 PER WHEEL

Reduced vibration
Balanced wheels smooth your ride, help promote long, even treadwear.

Save Now On This All Terrain Tire For Low Cost Mileage

Tracker A-T \$81

Outline White Letter, Size 9-15, LR B, plus \$3.73 FET. No trade needed.

\$39.95 VALUE!

For a limited time only, get this good-looking western vest absolutely free. The suede-like finish is buckskin tan, and the vest has a full shepherd lining with exposed trim on both pockets. The decorative branding patch is dark brown, with matching stitching. Get yours free with purchase of four Wrangler Radials. Or, buy two Wrangler Radials and pay just \$10.95. Stop at any participating Goodyear Store or dealer for complete details.
DON'T WAIT. OFFER ENDS Oct. 31, 1981.

PROTECT MOVING PARTS LUBE & OIL CHANGE \$8.99

Includes up to five quarts major brand 0/00 oil.
Oil Filter extra if needed.

- Chassis lubrication and oil change
- Includes light trucks
- Please call for appointment

Size	Sidewall	Load Range	SALE PRICE	Plus FET, no trade needed.
10-15	OWL	B	\$85.00	\$4.30
11-15	OWL	B	\$87.50	\$4.49

INVENTORY CLEARANCE: AUTO TIRES!

Qty	Tire	Size & Description	SALE PRICE	Plus FET, no trade needed.
3	Viva Radial	P17580R13XNW TL Blem	39.42	1.71
18	Viva Radial	P18575R14XNW TL Blem	39.50	1.98
4	Viva Radial	P18575R14 BL TL Blem	35.52	1.98
2	Viva Radial	P19575R14 XNW TL Blem	36.32	2.29
8	Viva Radial	P19575R15 BL TL Blem	33.95	2.29
13	Viva Radial	FR78X15 BL TL	34.51	3.32
8	Cust. Guard GT	P18570R13 OBL TL Radials	48.70	2.07
4	Eagle ST	P21570R14 RWL TL Radials	63.80	2.65
4	Eagle ST	P24560R15 RWL TL Radials	69.53	2.95
2	G800 Radials	1555R15 BL TL	39.90	1.71
4	G800 Radials	1658R14 BL TL	44.62	1.80
4	Cust. Polysteel	P16575R13 BL TL Radial	45.00	1.69

INVENTORY CLEARANCE: TRUCK TIRES!

Qty	Tire	Size & Description	LR	SALE PRICE	Plus FET, no trade needed.
6	Wrangler	31x1050X15 RWLTLBIAS	B	75.00	3.99
5	Wrangler	31X1150X15 RWLTLBIAS	B	82.00	4.53
8	Wrangler	F70X14 RWLTLBIAS Blem	B	39.85	2.53
16	WRL-Bias	L78X15 RWL TL Blem	B	44.75	3.06
3	WRL-Bias	L78X15 RWL TL Use Tube	B	35.41	3.06
4	Tracker	L78X15 XTRA GRIP TL	C	60.36	3.96
11	Tracker	H78X15 XTRAGRIP TL	C	54.68	3.63
8	Tracker	700X15 XTRAGRIP TL	C	61.82	3.35
4	Tracker	750X16 XTRAGRIP TL	C	61.33	4.01
7	Rib-Hi Miller	750X16 BLNY TL	C	54.02	3.46

EASY CREDIT TERMS AVAILABLE
VISA, MASTERCARD, CASH, IN-STORE FINANCING

EDENTON 919/482-7401

GOOD YEAR
CREYWOOD OIL COMPANY
WE HONOR NATIONAL ACCOUNTS

U.S. 64 879453

ROPER
919/795-3026

GOOD YEAR