

## Social Security Report On Retirees

By Lee Wallis  
Field Representative  
Planning Health Care In Retirement:

People who are in the process of planning for their retirement years should be sure they know what Medicare means in terms of health care protection. Knowing what Medicare can and cannot pay for can save money in more ways than one.

Medicare was envisioned by its planners as a means of helping older people cope with the higher cost of health care associated with growing old.

Since it started in 1965, it has kept many families from being devastated by expensive operations and chronic medical conditions requiring skilled medical treatment.

Medicare hospital insurance helps pay for hospital care and certain follow-up care.

The medical insurance part of the program helps pay for doctor bills and other services not covered by the hospital insurance part of Medicare.

Medicare does not cover custodial care - personal care that does not require medical skills - and a number of specific types of medical services.

For this reason many people purchase additional health insurance to supplement their Medicare protection.

However, recent findings indicate that many people are confused by the various policies available and often purchase duplicate coverage or coverage that does not otherwise meet their needs.

This is a major reason why authorities suggest that the starting point in planning health care protection in old age is knowing what Medicare covers.

One should then look at the health insurance coverage readily available from other sources.

For example, people who have health insurance coverage on the job should find out whether they can extend the protection into retirement; many plans have this provision.

In these cases the coverage generally changes to take account of the protection provided by Medicare.

Other people who have little other income and resources may be entitled to state medical assistance under the Medicaid program.

Medicaid generally pays health care bills not paid by Medicare for low-income elderly people.

For those who do decide to purchase additional health insurance, a good move is to first talk over your plans with someone who knows both insurance and your personal situation, like your current insurance representative.

People can get information on what Medicaid can and cannot pay for by

asking any Social Security office for a copy of "A Brief Explanation of Medicare".

The Social Security office also has a booklet specifically designed to make it easier to select appropriate supplementary health insurance coverage.

It's called "Guide To Health Insurance For People With Medicare", and it is produced by the Health Care Financing Administration in conjunction with the National

Association of Insurance Commissioners.

Copies of the booklets are available free of charge from any Social Security office. The Social Security staff will also be glad to answer any other questions you may have about Medicare coverage.

You can call the Elizabeth City Social Security office at 338-2161.

Dare County resident may call toll free by asking the operator for Enterprise 161.

## Boats Being Sought For Display

The N. C. Marine Resources Center-Ronaake Island is looking for old wooden boats.

The center, located near Manteo and adjacent to the Croatan Sound, is seeking boats to display at the Center as part of the exhibit program.

"We would like to have wooden boats which represent the type boats used in Northeastern North Carolina by commercial fishermen," Center director Rhett B. White explained.

"We know there are many of these boats in the area that have been unused for years, but which can be repaired and used for display purposes. We would like to hear from people who would be willing to donate or lend boats for display."

Boat types used along the North Carolina coast vary

## Heart Attack Victims

One - time heart attack victims ages 29 through 64 are currently being sought to participate in a study which lowers cholesterol to unprecedented levels. With heart disease claiming 800,000 lives annually, the National Institutes of Health is funding four research centers across the country to explore the role of lowered cholesterol in the treatment of heart attack victims.

The aim of researchers is to find conclusive evidence that maximal reduction of this fatty substance will significantly reduce the risk of heart disease.

The East Coast Center, which opened a short time ago, is located in Philadelphia. The center provides transportation and lodging for all prospective participants and an interested family member to come in for a screening visit.

from the small flat-bottomed skiffs to the larger shad boats and boats used in oystering and shrimping. The intended use of the boats had a lot to do with their design.

The boats used in the

rivers and along shallow sounds had to be of a type to not run too deeply in the water. Those designed for deeper navigation were deeper hulled.

The flat bottomed skiffs Continued On Page 10-B

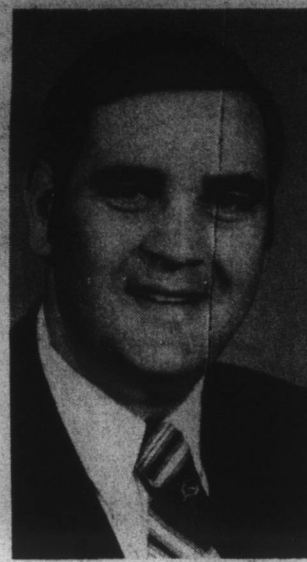
## Computer Users To Meet

The regular monthly meeting of The Albemarle Area Computer Users Group was held on October 13 at Soundview Restaurant. President Mary Lou Everett of First Colony Farms conducted the meeting. Eighteen members and guest were present. Guest were from Carters Ink of Edenton and Chowan County computer departments.

A report was given by the Bi-Laws. Also, the Nominations Committee presented their list of candidates for the new 1982 officers. They are; for president, Darleen Brabbe of Washington County; vice-president, Mary Ambrose of First Colony Farms and Cheryl Freeman of Ahoskie; secretary-treasurer, Sharon

Brickhouse of First Colony Farms and Cheryl Phillips of Perquimans Co.; program chairman, Robert Williams of Beasley Oil and Mira Hunter of Atlantic Forest Products. These are to be voted on at the next meeting. It was recommended and approved that the meeting night be changed to the third Monday night of each month. This will take effect as of the November meeting.

Bob Jennings and Jeff Burton of IBM presented a program on "Home Computers". They demonstrated a DATA Master Computer which is a small System 23. All present were then given time to use and experiment with the computer.



Rev. Ron Copple

## Revival Services Are Planned

Macedonia Baptist Church will begin their Revival Services Sunday November 8, at 11 A. M. Services will continue Sunday night at 7 P. M. and each night Monday through Friday at 7:30 P. M.

Ron Copple, pastor of Center Cross Baptist Church, Asheboro, N. C. will be bringing the messages of God at each meeting. Ron is a graduate of Southeastern Baptist Theological Seminary, Davidson County Community College, and Fruitland Bible Baptist Institute.

Everyone is invited to come and worship with the people of Macedonia.



Frozen mixed fruits, served partially thawed, make a quick, elegant dessert. Add sliced bananas, diced apples or mandarin oranges.

## Local Schools Are Toured

The week-end of October 30, 31 was a working one for members of the Edenton - Chowan Board of Education. Beginning at Chowan Junior High and moving on to each school in the county, the seven member board and Supt. John Dunn were met by each principal for the purpose of taking a close look at the school's physical plants.

Although School Board members generally make an annual tour of school facilities, the catalyst for their particular tour was the Curriculum Study for long range planning begun in the system last winter. Based on information gathered from seven different committees involving faculty, administration and community representatives,

state and regional consultants, the School Board is now beginning the process of meshing the recommended curriculum needs with the physical plant to develop, over the next ten years, a stronger academic program for students. According to Supt. Dunn, Board members were looking at everything, including space, good things and those which need improvement. They were viewing the condition of the school and the suitability of the facilities in view of the curriculum needs which were recommended during the previous study.

During their tour of John A. Holmes High School, the Board met briefly in a short business session. At this time, NCAE President Gil Burroughs' previous

request to the Board - that the professional organization's Executive Board be allowed a few minutes early dismissal once each month to conduct its business - was denied. The Board's logic for denial was based on principle, rather than the few minutes of time, which was agreed upon as negligible. Research by the Superintendent showed that there were thirty-one possible organizations in which teachers could belong and request early dismissal.

However, the School Board saw no problem with the individual school principals granting such permission depending on extenuating circumstances. It was the Board's consensus of opinion that such Continued On Page 10-B

## AUCTION SALE

Eliza K. Elliott Farm

Saturday, November 14, 1981 11:00 a.m. on the premises

Located: 3rd Township, Chowan County on N.C. 32, 1 1/2 mi. north of Small's Crossroads; approx. 15 mi. north of Edenton and 17 mi. south of Sunbury. A portion of ASCS No. C-1500

200 Total Acres (more or less)

90.3 Acres Cropland (more or less)

1981 Peanut Allotment: 24.4 Acres; 48,645 quota lbs.

Farm will be divided into two tracts:

Tract 1: 170 Total Acres (+/-)  
82.5 Acres Cleared (+/-)  
1981 Peanut Allotment:  
24.4 Acres; 48,645 quota lbs.  
4-2200 bu. grain bins

Tract 2: 31 Total Acres (+/-)  
8 Acres Cleared (+/-)  
No Allotments

Timber included - (cruise information available)

TERMS: Tracts 1 and 2 will be sold separately, then offer for sale together. This is a final sale without raised bids. A 10 per cent cash deposit will be required by the high bidder - BALANCE upon receiving of deed.

Seller reserves the right to accept or reject any and all bids. Other terms may be announced at the sale.

For further information, contact:

Branch Bank & Trust Co. - Farm Dept P.O. Box 1259, Tarboro, NC  
Telephone: 823-6101

Auctioneer: Harold Winslow

N.C. License No. 90

# BIGGER IS BETTER

## Perdue's bigger broiler house means a better net income.

100 extra feet of Perdue broiler house doesn't mean 25% more work for the owner compared to our 400 foot house, but it does mean 25% more gross income. It's Perdue's new 500 foot broiler house, and compared with a 400 foot Perdue house like we have been building, the net income is 32-37% better. The reasons for the improved cash flow are simple. Construction cost per square foot is less on the new 500 foot house. In fact, the 500 foot house can be built for 12¢-15¢ per square foot less than the 400 foot house. And because it holds more birds, the New House Guarantee is higher: \$3,680 per flock, or \$20,240 annual gross income based on 5 1/2 flocks each year. Another reason "bigger is better" is the increased



fertilizer output; about 100 tons of chicken litter per house each year. Considering it costs approximately \$25 a ton to buy the equivalent in commercial fertilizer, 100 tons of litter can provide a savings of \$2,500 for the corn and soybean grower.

"The Perdue 500" features the same modern features as the "Perdue 400." Easy maintenance and care, less maintenance cost with platoon drinkers, the new flex auger feeding system, and energy efficient fans for ventilation.

Plus it features a larger new house guarantee and better cash flow. In short, you get more of a good thing with the "Perdue 500." To find out about the Perdue broiler program, our new larger house, and our \$1,000 rebate, mail this coupon or call us today. There's never been a better time to Talk Chicken with PERDUE.

Tell me how I can grow with **PERDUE**

EDN-A-24-B

Name \_\_\_\_\_

Address \_\_\_\_\_

City \_\_\_\_\_

State \_\_\_\_\_

Zip \_\_\_\_\_

Phone \_\_\_\_\_

Send to Perdue, P.O. Box 733, Ahoskie, NC 27910. Or call (919) 332-6111 during the day. At night call Jesse Crisp (919) 798-7391, Rex Thompson (919) 345-0670, Tom Taylor (919) 332-6676, Randy Whitley (919) 396-3073, or Terry Means (919) 332-6075.

Let Us Make Your  
**FINE FURNITURE**  
Beautiful Again.

Now Is The Time To  
**REUPHOLSTER**  
Your Furniture Before The Holidays.

Call Today!

**Freely Meadows Upholstery**  
482-2476

**HOLLOWELL'S  
ELECTRICAL  
SERVICE**

ROUTE 3  
EDENTON

**ALVIN  
HOLLOWELL  
OWNER** (Licensed Electrician)

Call After 3:30 P M

PHONE 482-2608

FOR FREE ESTIMATES

**NEW WORK  
CONTRACTOR**