

**Tax Forms Out**

GREENSBORO — Almost 3.3 million North Carolina residents will receive their Federal income tax forms packages this week, the Internal Revenue Service says.

Slightly more than half the packages will be the 1040 or long form, along with various supporting schedules, the IRS said.

The most significant change in this year's tax package is the reduction of the number of tax tables from four to one. The one table may be used by all taxpayers, regardless of filing status. However, because of the change, the taxpayer must now subtract \$1,000 for each exemption, a step previously incorporated in the tax tables.

The tax tables, which include the tax reduction of last October, have also been expanded and now cover adjusted gross income up to \$50,000.

Even the 1040A short form has been changed to aid the taxpayer. The 1040A may now be used to report any amount of interest and dividend income.

For taxpayers who received income during 1981 on the All-Savers Certificates, new sections have been added to the 1040A and to Schedule E of Form 1040. Also, Schedule E will no longer be needed to report pension and annuity income; this can now be reported on the first page of Form 1040.

Additional forms and-or publications may be ordered through the toll-free number 1-800-241-3860.

Taxpayers are encouraged to use the preaddressed, peel-off label and special envelope sent with the tax package.

**Schedule For Missed Days**

Bertie County Schools will make up days missed due to inclement weather on the Saturday of the week the day is lost. The Bertie County Board of Education approved the following motion at their meeting on January 4.

Bertie County Schools will make up days missed due to inclement weather as follows:

If one day is missed during a week, that day will be made up on Saturday of that same week, if possible;

If more than one day is missed during a week, one of the days will be made up on Saturday of that same week, if possible, and the other day or days, will be made up during the week of April 11-17 using 4-16, 4-15, 4-14, 4-13, and 4-17 in that order; or

All make-up days will follow normal school day schedule.

The superintendent Greg Todd says that this motion should help the school system in several ways. Since schools may operate only 5 days per week, this will enable the system to have five school days in only one day is missed. The motion makes every effort to keep the Spring break (April 12-16) free for students. Also, the schools would have to be closed for 6 or more consecutive days before the school year would have to be extended beyond its present June 8 closing date.

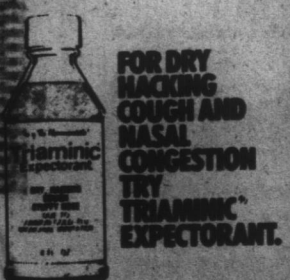
**Repairs Begin**

Continued From Page 6-B

The bridge will be open to auto and light truck traffic one-way. For truck and water traffic, there may be delays of up to two hours.

Coinjock Bridge crosses the Atlantic Intracoastal Waterway in Currituck County about 15 miles each from Elizabeth City. It is part of the NC168-NC 34- US 158

Project



**TG&Y family centers**

**EDENTON VILLAGE SHOPPING CENTER**

Shop Sunday 1-6  
Weekdays 9-9

TG&Y's policy is to always have advertised merchandise in adequate supply in our stores. In the event the advertised merchandise is not available due to unforeseen reasons, TG&Y will provide a Rain Check, upon request, in order that the merchandise may be purchased at the sale price when it becomes available, or you may purchase similar quality merchandise at a similar price reduction. It is the policy of TG&Y to see that you are happy with your purchases. \*It is TG&Y's policy to be priced competitively in the market. Regular Sale Prices may vary market by market, but the sale price will always be as advertised. \*We will be happy to refund your money if you are not satisfied with your purchase. VISA® and MasterCard® accepted.

**SELLING OUT SALE**

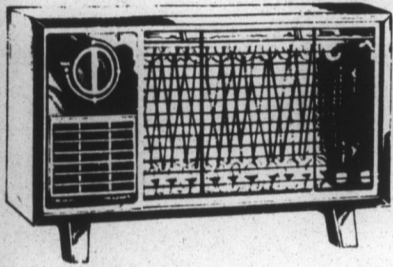
**Selling Out Of All Fall & Winter Merchandise**

**Electric Blankets**



- Twin (single control) Reg. 29.97 **\$22<sup>98</sup>**
- Full (single control) Reg. 31.97 **\$23<sup>98</sup>**
- Full (Dual Control) Reg. 38.97 **\$29<sup>98</sup>**

**Arvin Electric Heaters**



1320 Watts

**\$16<sup>88</sup>**

Reg. 18.99

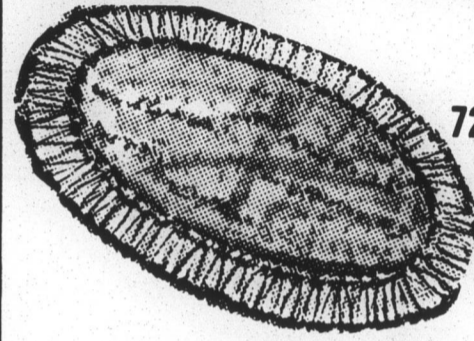
**All Winter Apparel**

Up To

**50% Off!**  
Regular Price

**Rugs**

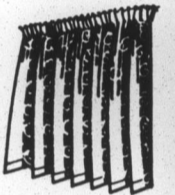
- 24 x 36 Oval Fringed Reg. 3.44 **\$2<sup>77</sup>**
- 72 x 48 Oval Fringed Reg. 4.76 **\$3<sup>99</sup>**



**Assorted Foam Backed Drapes**

- Sizes 50 x 84
- 50 x 63

**\$5<sup>88</sup>**



Reg. 9.88

Slightly Irregular

**Mens Flannel Shirts**

Sizes S,M,L



**\$3<sup>97</sup>**

Reg. 5.97

**Kleenex Paper Towels**



**2/\$1<sup>00</sup>**

**Assortment of Towels**



- Bath (values to 3.50) **2/\$5<sup>00</sup>**
- Hand (values to 1.77) **2/\$3<sup>00</sup>**

**Closeout On Bedding Foam**

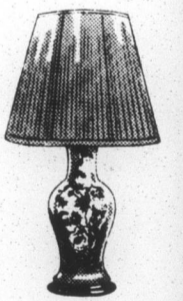
- 54 x 76 x 3 Reg. 28.47 **\$21<sup>00</sup>**
- 54 x 76 x 4 37.38 **\$28<sup>00</sup>**
- 39 x 76 x 3 20.88 **\$15<sup>00</sup>**
- 30 x 76 x 3 15.38 **\$11<sup>00</sup>**
- 27 x 76 x 3 13.73 **\$10<sup>00</sup>**

**TG&Y Is The Store For Your Insulation Needs**

- Furnace Filters **2/\$1<sup>00</sup>**
- Fiberglass Pipe Wrap **\$1<sup>47</sup>**
- 4 Pack Storm Window Kit **\$1<sup>57</sup>**
- Storm Door Kit **\$1<sup>57</sup>**

**Assortment Of Lamps**

Choose From Wicker or Ceramic



**\$25<sup>00</sup>**

Reg. 39.97

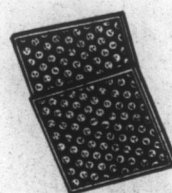
**Mens & Ladies Cowboy Boots**

**1/2 Price**



**Roll of Plastic Sheeting 500 sq. ft.**

**\$11<sup>97</sup>**



**Assortment of Stoves**

- Franklin Fireplace Reg. 179.99 **\$129<sup>97</sup>**
- Hart Fireplace Glass Screen Clearance Reg. 49.99 **\$30<sup>00</sup>**

Height - 24" to 27 1/2"  
Width - 29" to 37 1/2"

Model No. 306-100

Height - 28" to 31 1/2"  
Width - 35" to 43 1/2"

Model No. 307-702