

# Farm Market Report

Corn prices were 3 to 7 cents higher and soybeans 6 to 12 cents higher through Thursday, June 10 compared to the same period of the previous week, according to the Market News Service of the North Carolina Department of Agriculture. No. 2 yellow shelled corn ranged mostly \$2.88 to \$3.04 in the Eastern part of the state and \$2.74 to \$3.07 in the Piedmont. No. 1 yellow soybeans ranged mostly \$6.36 to \$6.55 1/2 in the East and \$6.23 to \$6.35 in the Piedmont; No. 2 red winter wheat \$2.94 to \$3.09; No. 2 red oats \$1.30 to \$1.65; and barley \$1.60 to \$1.84. Soybean meal for the processing plant ranged \$202.30 to \$210.50 per ton for 44 per cent. New crop prices quoted for harvest delivery corn \$2.38 to \$2.65, soybeans \$5.85 to \$6.23.

Egg prices were about 1 to 2 cents lower with the greatest decline on smalls compared to those of the previous week. Supplies were moderate. Demand was moderate. The North Carolina weighted average price quoted on June 10 for small lot sales of cartoned grade A eggs delivered to stores was 63.98 cents per dozen for large, medium 52.40 and smalls 40.00. Sweet potato prices were about steady this week. Supplies are adequate and demand seasonally good. Fifty pound cartons of cured US No. 1s, on June 10 were quoted at \$9 to \$10 few higher and lower; Jumbo prices were firm at \$7 to \$8. The harvest of fruit and vegetables is being hampered by excessive rains this week. In the Faison area movement on cabbage, squash and beans is declining with cucumbers increasing and pepper just beginning. White potato harvest is getting underway. A total of 8429 feeder pigs were sold on 13 state graded sales during week of June 7. Prices were \$4.25 to \$10 lower per hundred pounds. US 1-2 pigs weighing 40-50 pounds averaged \$103.88 per hundred pounds with No. 3s \$97.96; 50-60 pound 1-2s averaged \$92.55, No. 3s \$84.70; 60-70 pound 1-2s \$81.06, No. 3s \$75.53; 70-80

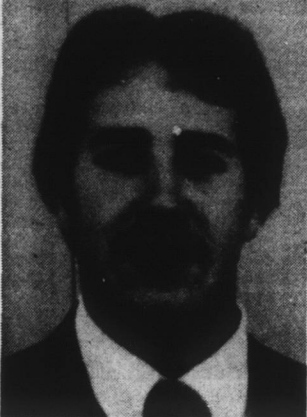
pound 1-2s \$74.75 per hundred pounds with No. 3s \$72.33. At 10 weekly livestock auctions held within the state the week of June 7, 5,157 cattle and 2,485 hogs were sold. Prices for slaughter cows were \$1.50 to \$4 higher and feeder calves irregular. Utility and Commercial slaughter cows brought \$40.50 to \$49 with Canner and Cutter at \$35 to \$44. Choice slaughter calves 350-550 pounds sold from \$54.50 to \$59.50 with good grade at \$47.50 to \$54. Good slaughter steers above 800 pounds brought \$54.75 to \$60.25. Few Choice slaughter heifers above 700 pounds brought \$65.50 to \$66.50 with Good at \$50 to \$57.50. Slaughter Bulls yield grade 1 and 2 above 1000 pounds sold from \$48 to \$59 per cwt. Medium Frame No. 1 thickness 400-500 pound feeder steers brought \$60 to \$66 with Small Frame No. 1s at \$56 to \$60.50, same weight Medium Frame No. 1 heifers brought \$50 to \$56 with Small Frame No. 1s at \$48 to \$51.50. Beef type Feeder Cows carrying average flesh brought \$38.50 to \$47 with thin flesh at \$34 to \$45 per hundred pounds. Baby calves under three weeks of age brought \$35 to \$80 per head. Market hogs 200-240 pounds sold from \$58.45 to \$61.40 with sows 450 pounds up at \$50.75 to \$55.50. The Broiler - Fryer market is 1 cent higher for next week's trading. Supplies are light to moderate. Demand is good. The North Carolina dock weighted average price is 47.03 cents per pound for less than truckloads picked up at processing plants during the week of June 14. This week 8.6 million birds were processed in North Carolina with an average live bird weight of 4.24 pounds per bird on June 9. Heavy type hens were 2 cents lower this past week. Supplies were burdensome and demand light. Heavy type hen prices 10 cents per pound at the farm with buyers loading. Market hog at daily cash buying stations about the state sold steady to 50 higher during week of June 7 and ranged mostly \$59.75 to \$61.25 per hundred pounds. Sows 500 pounds up ranged \$51.00 to \$55.00.

The unemployed aren't all eager to find what they're looking for.

## Boss Of The Year

Win Dale, son of Mr. and Mrs. Rudolph Dale of Edenton has been selected as the Boss of the Year for the Southwest Edgecombe High School DECA Chapter. Dale is the Assistant Manager of the K-Mart Store in Tarboro, North Carolina. He was selected from twenty-one employers in the Tarboro and Rocky Mount area who have supported Distributive

Education and DECA. A former graduate of John A. Holmes High School, Dale has worked for K-Mart for the past two years. He has been assigned to stores in Williamston and Raleigh before going to Tarboro as the assistant manager. Cindy Morris, a junior at Southwest Edgecombe and an employee under Win's supervision recommended Win for this high honor.



Win Dale

## Publication Announced

The National Sharecroppers Fund - Rural Advancement Fund announced today the publication of "Issues in Agriculture 1982." The booklet is an introduction to a variety of important food, land and agricultural issues in North Carolina. North Carolina has lost over 150,000 farms in the past 25 years. The disap-

Continued On Page 12-A

## Approved Medicare Charges

By Lee E. Wallio Field Representative Medicare Pays On "Approved Charge" Medicare payments are based on the "approved charge", not necessarily the actual charge made by doctors and others who provide covered services. The "approved charge" is the amount used by the insurance carrier to compute the actual payment. Medicare pays 80 per cent of the approved charges for covered services after the patient has met the \$75 annual deductible. The approved charge is the lower of the actual charge, the customary charge, or the prevailing charge. The customary charge is the usual fee a doctor charges for a specific service. The prevailing charge is figured by comparing the amounts charged by all

physicians in an area for the same service. The prevailing charge is set at 75 per cent of the range of charges made for a given service in the area. The customary and prevailing charge figures are based on information

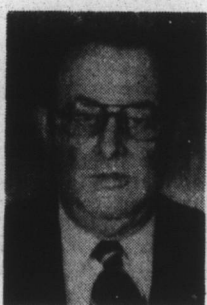
collected in the calendar year before the benefit year, which runs from July through June. For example, the fees approved in the period July 1982 through June 1983 will be based on information collected in 1981.



**- RE-ELECT -**  
**George E. Jones**  
**CHOWAN COUNTY**  
**COMMISSIONER**  
**FIRST TOWNSHIP**  
**Democratic Primary**  
**June 29, 1982**  
**QUALIFIED... EXPERIENCED**

YOUR VOTE AND SUPPORT WILL BE APPRECIATED  
Political Adv. -  
Paid for by Committee to Elect George E. Jones, Commissioner

The Beach at the Soundview Restaurant is a Private Beach. Membership Only. If interested in membership card, call for information at 793 - 9611. Located at Hwy. 32, foot of Albemarle Bridge, Roper, N.C.



**A VOTE FOR**  
**WARREN**  
**TWIDDY**

1st COMMISSIONER  
IS A VOTE FOR A BETTER CHOWAN

COMMITTED TO ALL PEOPLE --  
(NOT JUST SPECIAL INTEREST GROUPS)

HONESTY IN GOVERNMENT --  
(AND EVERYDAY BUSINESS DEALINGS)

OPEN MINDED --  
(A WILL TO LISTEN TO ALL PEOPLE)

WILL TO SERVE --  
(EXPERIENCED IN DECISION MAKING)

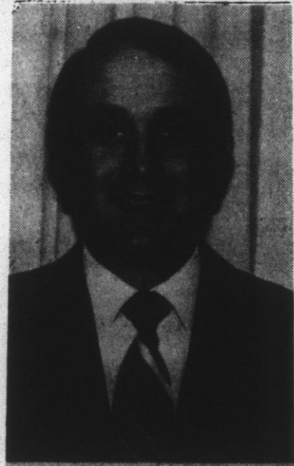
ABILITY AND SUCCESSFUL --  
(PROVEN SUCCESSFUL LEADING BUSINESS MAN)

NEVER A CLOSED DOOR --  
(OPEN DOOR COMMITMENT TO ALL PEOPLE)

Vote For A Better Chowan County  
**WARREN TWIDDY**  
CHOWAN COUNTY COMMISSIONER

Political Adv. -  
Paid for by committee to elect Warren Twiddy, Commissioner.

**—ELECT—**  
**Billy Nixon**  
For  
**Board Of Education**  
**Primary Election**  
**June 29**



Your Vote And Support  
Will Be Appreciated

Political Adv. -  
Paid for by the committee to elect Billy Nixon, Board of Education

## NORTH CAROLINA DEPARTMENT OF TRANSPORTATION NOTICE OF PUBLIC MEETING

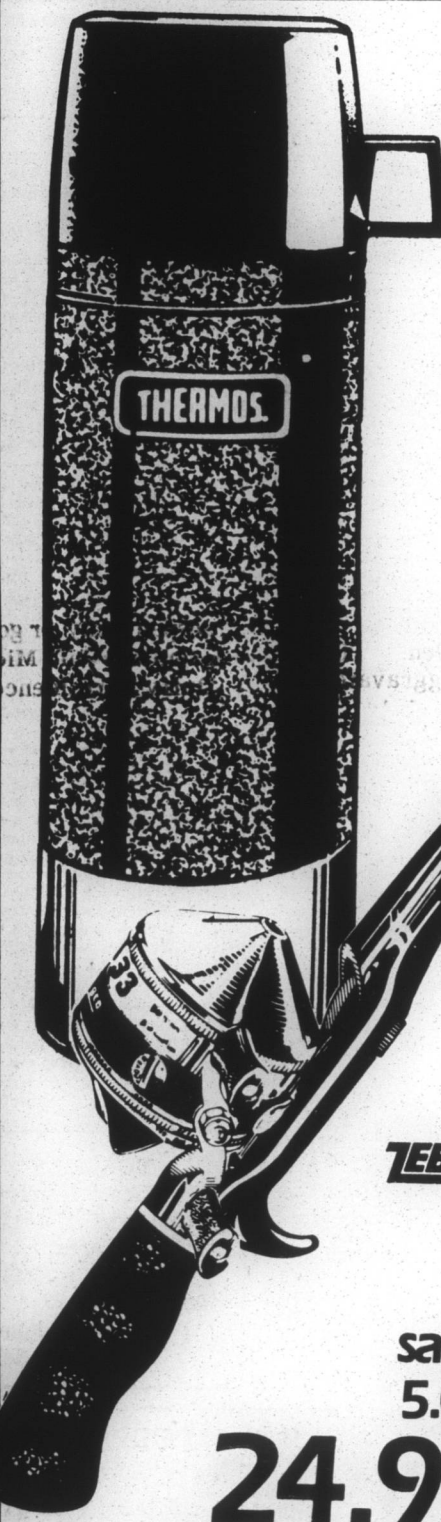
Board of Transportation Member, Marc Besnight, and Division Staff Members, will meet with the Chowan County Board of Commissioners in the Commissioner's Room in the Chowan County Courthouse in Edenton at 10:30 A.M., June 25, 1982, for the purpose of discussing the county's 1982 - 83 Secondary Roads Improvement Program. A copy of the proposed Secondary Improvement Program, together with a map, is posted in the Chowan County Courthouse. All interested persons are invited to attend the meeting.

DIVISION OF HIGHWAYS



## TG&Y family centers EDENTON VILLAGE SHOPPING CENTER

TG&Y's policy is to always have advertised merchandise in adequate supply in our stores. In the event the advertised merchandise is not available due to unforeseen reasons, TG&Y will provide a Rain Check, upon request, in order that the merchandise may be purchased at the sale price when it becomes available, or you may purchase similar quality merchandise at a similar price reduction. It is the policy of TG&Y to see that you are happy with your purchases. If it is not, we will refund your money. We will be happy to refund your money if you are not satisfied with your purchase. VISA and MasterCard accepted.



Zebco Rod and Reel Combo Reel 'em in with this 6 ft. spincast fiberglass rod and Zebco 33 reel. Spring-actuated drag system, wide-range control, selective anti-reverse. #3470. Reg. 29.97. Limit 2

**16.96**

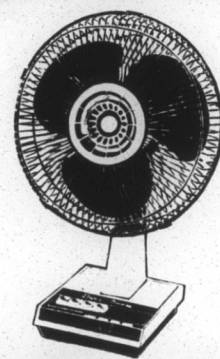
Thermos Steel Vacuum Bottle Unbreakable thermos with stainless steel liner keeps hot drinks hotter and cold drinks colder than ever! Travels anywhere! 1 liter capacity. Limit 2



**Barbeque Grill**  
**\$10.88**

Structure 24" Grill Model 4110K Big 380 sq. in. chrome plated cooking grid, 4 position positive grid adjustment. Reg. 14.88. Sim. to illustration.

## Happy FATHER'S DAY



12 inch 16 inch  
**29.88 39.88**

Oscillating Fan 3-speed fan in your choice of 12" or 16" diameter. Portable, spot cooling! #KSD1151/67



**Ratchet - Socket Set**

**\$18.99**

RATCHET SOCKET SET

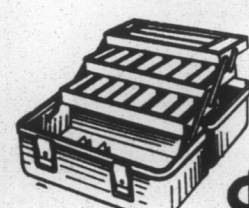
Combination Set 59 pc., inch and metric sizes. 1/4" plus 3/8" plus 1/2" drive. Triple chrome plated, rust proof, drop forged ratchet. Reg. 24.99. Sim. to illustration.

**Screwdriver Set**

**\$4.97**

Screwdriver Set 11 pc. wood handle set. Drop forged tempered steel. Reg. 6.57.

**Tackle Box**

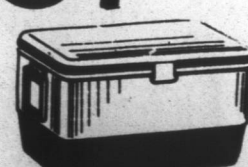


**\$8.97**

Old Pal Woodstream Mark IV 4 trays, 34 compartments (12 adjustable), water tight, worm proof trays, draw bolt latch. Reg. 14.99.

**Gott Cooler**

**\$57.87**



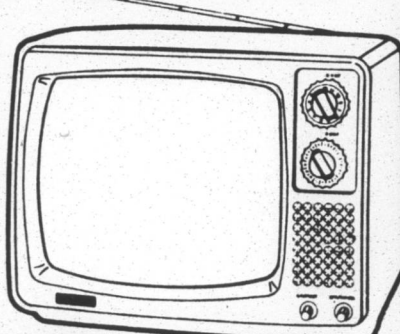
88 qt. Cooler Features inlid re-freeze bottles (fill, freeze, & save). Shallow & deep food trays. Lid & chest fully insulated. Easy open snaploc latch. Super size capacity. Molded quickgrip handles.



save 31%

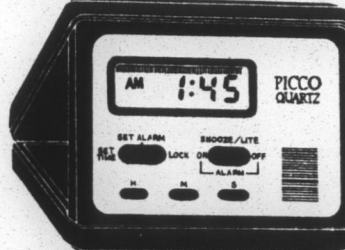
**5.47**

Lawn Chair Treat Dad to super summer comfort! Lightweight, aluminum construction with plastic arms. #L6004. Reg. 7.97



Savings you can see...over 10.00 off our 12" black & white Portable!

**\$69**



**16.97**

Pico Digital Travel Clock Accurate to within 10 seconds per month! Pleasant alarm tone, plus snooze function. #502K

**Electronic Bug Killer**

**\$59.99**

Deluxe Bug Killer Model XR1140. Safe sanitary control of gnats, flying moths, mosquitoes, hornets, and other flying insects. Ideal for patios, boat docks, barbeque areas and swimming pools. Reg. 69.99.

**Fire Extinguisher**

**\$8.91**



Kidde Fire Away 10-BC-UL Rated - Rechargeable - High visible gauge. 1 yr. limited warranty. Net wt. 2 lbs. 12 oz.