



Seen In The Files Of The Chowan Herald 1937 - 45 Years Ago
A permanent organization of a Chamber of Commerce was effected with J.H. Conger elected president, Mayor J.H. McMullan, secretary and Millard F. Bond treasurer.

— "Meet The Candidates" Forum Held —

The Edenton-Chowan Unit of the North Carolina Association of Educators sponsored a "Meet The Candidates Night" June 16 in the Edenton Municipal Building with a capacity crowd in attendance. Questions concerning educational issues of the community were submitted to the candidates prior to the meeting. During the meeting, the candidates presented their prepared responses.

Incumbent County Commissioner C.A. Phillips and challenger Warren Twiddy, incumbent George Jones and his opponent Joe Hollowell, and incumbent J.D. Peele were present. Mrs. Clara Boswell, was unable to attend due to the serious illness of her husband, but did send her regrets and

written responses to the questions. The questions and the candidates responses, as heard by a panel of three NCAR members, are summarized below.

Question
Under present state law, local government is responsible for, but not limited to, providing the physical facilities for the public educational system. The Chowan Board of Commissioners has adopted a resolution that states "counties be responsible for providing and monitoring physical facilities only." Do you support such a resolution on local tax revenues for educational purposes?

Answer
Phillips—Believes the state should provide all operational funds for the

public schools as originally stated in state law and counties provide the physical facilities. Voted for the resolution on Sept. 8, 1980.

Twiddy—Does not support such a restriction on local tax expenditures. Children must have what it takes to develop talents.

Jones—Feels state isn't paying its share, funds aren't equalized among counties. Voted for the resolution on Sept. 8, 1980.

Hollowell—Does not support the resolution. Would prefer flexibility to respond to local needs.

Peele—Does not support such a resolution. County has always funded more than just buildings, but voted for the resolution on Sept. 8, 1980.

Boswell—Does not support a restriction on local tax expenditures for education.

Question
The percentage of local tax revenue going to school system has been steadily decreasing. Since our system receives a significant portion of its funds from federal programs which are being reduced or eliminated, do you support an increase in the percent of local tax revenues for local education?

Answer
Phillips—Need to wait and see the degree of federal cuts before questions can be answered. Cannot pick up

Phillips—Yes, if properly run, could save money.

Twiddy—Yes, but will need to get laws changed.

Jones—Yes, combining maintenance of vehicles, collection, inspection could save money.

Hollowell—Yes, if it can save money.

Peele—No, it won't reduce anything.

Boswell—May be some areas where money can be saved, but will require extensive study. Willing to work on it.

School Board candidates Yvonne Smith and Billy Nixon, who are vying for the Second Township seat, and Jane Underkofler and A.B. Harless were present. John Mitchener III was out of town at the Presbyterian General Assembly but provided responses. The fourth candidate for the First Township seat, Jerald Perry, was not present due to several other meetings.

Question
As a means of providing more meaningful teacher input into Board decisions and improving communications between the Board and teachers, could

you support a teacher as a non-voting ex-officio member of the Board?

Smith—Yes, they spend the most time with children.

Nixon—Yes, teachers have valuable input.

Underkofler—Yes, need better communication from all segments of the community.

Harless—No, existing channels, principals and teacher advisory committee can bring input to meetings.

Mitchener—Disappointed that communications are not good, feels teachers, as professionals, need to be used to their fullest potential. Favors more teacher input.

Question
Last year, and again this year, the Board has cut all local salary supplements \$150, resulting in a 50 per cent cut for teachers but only a 3 per cent cut for the top administrative position. Could you support a request to reinstate the \$150 or, if cuts are necessary, have a fixed percentage for all rather than the present fixed dollar amount?

Smith—Supports supplement, should be fixed amount.

Nixon—Reinstate cut, if cuts are necessary, should be the same percentage for all, cut was a slap in the face.

Underkofler—Supports same percentage for all, fixed \$150 cut was a low blow.

Harless—Supports reinstating cut, fixed percentage for all if necessary.

Mitchener—Need more information to answer this question.

Question
Several pertinent questions were raised by the audience and the candidates complete responses gave much insight into their views. It is hoped that these condensed responses will help the citizens of Chowan County be better informed voters on June 29.

Answer
Smith—Would like public to call her, has already visited each school and would continue to do so.

Nixon—Visit the schools, won't look on job as a once a month meeting, will support all school functions.

Underkofler—Has attended Board meetings for past three years and knows much from this. As Health Dept. nurse, she gets into schools, would use leave to visit schools.

Harless—Go to the source for information; school, central office, principal.

Sheriff J.A. Bunch reported a record day for tax collections when \$5,500 for 1936 taxes were paid. County Commissioners delayed action on a proposed full time health service until the new county budget was considered. Four Edenton students, Stuart Blow, Audrey Rowell, David Warren and John Mitchener were among the 475 graduates at the University of North Carolina. Carroll Crockett re-

Continued On Page 11-B



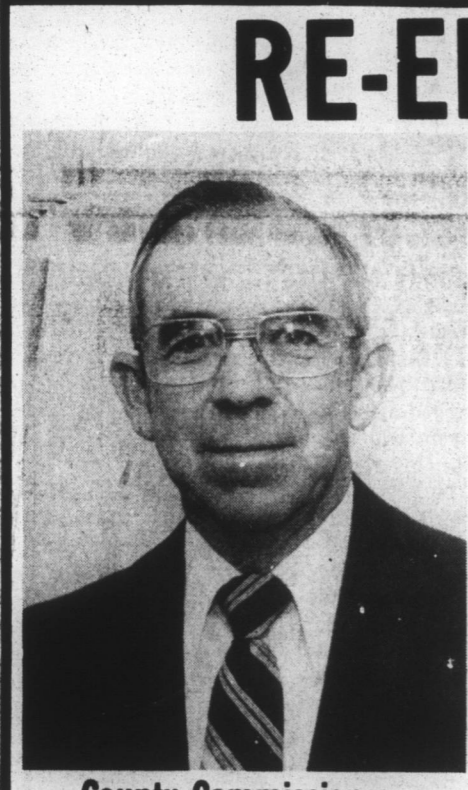
VOTE FOR Yvonne A. Smith
Board Of Education
June 29

Your Vote and Support Will be Appreciated

Paid for by Committee to Elect Yvonne Smith, Board of Education

Question
The percentage of local tax revenue going to school system has been steadily decreasing. Since our system receives a significant portion of its funds from federal programs which are being reduced or eliminated, do you support an increase in the percent of local tax revenues for local education?

Answer
Phillips—Need to wait and see the degree of federal cuts before questions can be answered. Cannot pick up



RE-ELECT
★ J. D. Peele ★
County Commissioner
2nd Township Chowan County
June 29th

Your support during the last 8 yrs. has been greatly appreciated.

I feel that experienced leadership is needed now more than ever

Because of this, I covet your vote and support

County Commissioner

Paid for by Committee to Re-Elect J.D. Peele, County Commissioner

Question
As a means of reducing local governmental administrative expenses, whereby freeing funds for other programs such as education, could you support consolidation of county and municipal governments and their public service departments?

Answer
Phillips—Yes, if properly run, could save money.

Twiddy—Yes, but will need to get laws changed.

Jones—Yes, combining maintenance of vehicles, collection, inspection could save money.

Hollowell—Yes, if it can save money.

Peele—No, it won't reduce anything.

Boswell—May be some areas where money can be saved, but will require extensive study. Willing to work on it.

School Board candidates Yvonne Smith and Billy Nixon, who are vying for the Second Township seat, and Jane Underkofler and A.B. Harless were present. John Mitchener III was out of town at the Presbyterian General Assembly but provided responses. The fourth candidate for the First Township seat, Jerald Perry, was not present due to several other meetings.

Question
As a means of providing more meaningful teacher input into Board decisions and improving communications between the Board and teachers, could

Question
Last year, and again this year, the Board has cut all local salary supplements \$150, resulting in a 50 per cent cut for teachers but only a 3 per cent cut for the top administrative position. Could you support a request to reinstate the \$150 or, if cuts are necessary, have a fixed percentage for all rather than the present fixed dollar amount?

Smith—Supports supplement, should be fixed amount.

Nixon—Reinstate cut, if cuts are necessary, should be the same percentage for all, cut was a slap in the face.

Underkofler—Supports same percentage for all, fixed \$150 cut was a low blow.

Harless—Supports reinstating cut, fixed percentage for all if necessary.

Mitchener—Need more information to answer this question.

Question
Several pertinent questions were raised by the audience and the candidates complete responses gave much insight into their views. It is hoped that these condensed responses will help the citizens of Chowan County be better informed voters on June 29.

Answer
Smith—Would like public to call her, has already visited each school and would continue to do so.

Nixon—Visit the schools, won't look on job as a once a month meeting, will support all school functions.

Underkofler—Has attended Board meetings for past three years and knows much from this. As Health Dept. nurse, she gets into schools, would use leave to visit schools.

Harless—Go to the source for information; school, central office, principal.

Custom Piers • Bathhouses • Bulkheads • Jetties

Linton and Tankard Construction
FIFTEEN YEARS EXPERIENCE • FREE ESTIMATES

George Linton Bath, N. C. (919) 923-6191

Phillip Tankard Bath, N. C. (919) 923-6191

RE-ELECT AL PHILLIPS
CHOWAN COUNTY COMMISSIONERS
Experienced - Qualified
Your Vote And Support Will Be Appreciated
1982 Democratic Primary

Paid for by Committee to Re-Elect Al Phillips, County Commissioner

JONES
REAL ESTATE
318 S. Broad St.
Call Terry Jones At 919-482-7522

RIVERTON — attractive brick home featuring LR, Den, Kitchen - Dining Combo., 3BR, 2 Baths, Utility Room, Garage, Central Vacuum System. Some assumable mortgage at 7½ per cent. \$62,000.

BAYVIEW TRAIL — Attractive brick home on large lot with trees near Country Club featuring LR, Den, Kitchen-Dining Combo, Utility Room, Rec. Room, 3 BR, 2½ baths. \$60,000.

MAGNIFICENT COUNTRY HOME—Two story turn of the century home remodeled in last four years. Features LR, DEN, DR, Kitchen, utility room, sewing room, 4BR, 3 Baths. Double garage. Located on beautiful lot with huge trees in quiet rural setting. \$135,000. Long term owner financing at 13½ per cent.

MORGAN PARK — beautiful brick home featuring LR, Den, Dining Room, Kitchen, Utility Room, 3BR, 2 Baths. \$65,000.

CAPE COLONY — Shingle home on canal features LR, kitchen, 3 BR, bath, garage. Private boat ramp. \$39,000.

SWIMMING POOL — 2700 sq. ft. brick home with LR, family room w-fireplace, kitchen, 4 BR, 2½ baths plus a sewing room. Patio area. Price Cut to \$75,000. Low down payment, owner financed for 20 years at 12 per cent.

HISTORIC DISTRICT — Lovely two story colonial home on corner lot. Features living room, den, dining room, kitchen, five bedrooms, garage. Easy walking distance of downtown.

ONE MILE FROM TOWN — This handsome two story brick home has a rural atmosphere, yet is less than one mile from town. Features LR, den (fireplace), dining room, kitchen, four BR, 2½ baths, and garage. Located on an acre of land. More acreage available. 9 per cent assumable. \$69,500.

ON CHOWAN RIVER — Two story brick home, featuring 4 BR, 3 baths, LR, kitchen, den with fireplace plus family room. Deck overlooking the water. \$80,000 with owner financing available.

BASE RD. — Brick, LR, kitchen, 3 BR, bath, deck, back yard. \$35,000.

CHOWAN RIVER — This riverfront home features LR, kitchen, 3 BR, nice bulkheaded lot. \$48,000.

HWY 17 — Brand new! 1750 sq. ft. brick construction. Features great room with fireplace, kitchen-dining combination, 3 BR, 2 baths, utility room, deck. \$69,500. Assumable 15½ percent fixed rate loan.

ARROWHEAD BEACH — This home is located on three lots. Features LR, kitchen, DR, 3 BR, 2 baths. \$19,950.

OLD COUNTRY HOME—Needs moving and restoring. \$6,000.

BEAUTIFUL WATERFRONT LOTS ON ALBEMARLE SOUND — One half acre in size. Hornblow Pt. \$26,500.

RIVERTON — 8 yr. old home on ½ acre lot featuring LR, den, kitchen, 3 BR, 2 baths. \$55,900.

W. HICKS STREET — Lot for sale. \$2,900. Owner financing possible.

MEXICO RD. - FOR SALE — This three bedroom brick home features large living room, den (fireplace), kitchen, two baths, and garage. \$49,000.

HWY. 17 — Owner financing. 12 year old home on large wooded lot; features LR, den, dining area. kitchen, 3 BR, 1½ baths \$39,500.

MORGAN PARK — Beautiful brick home on an acre lot. Includes LR, DR, den, library (fireplace), rec. rm., solarium, kitchen, three BR, two baths, double garage and workshop, temp. controlled hothouse. \$66,500

BUILDING LOTS FOR SALE — Commercial & Residential.

CABLE TV HAS IT ALL

BEST ENTERTAINMENT VALUE

Albemarle Cable TV not only offers its subscribers the greatest variety of entertainment available but also America's greatest entertainment value. Now for as little as 23¢ per day your entire family can enjoy cable TV as its best.

So why wait, call us today for your cable TV installation and begin enjoying cable TV's great entertainment variety and value!

ALBEMARLE CABLE TV
A Compass Corporation

CALL TODAY and mention this ad for Super Summer Savings Specials
482-7733