

## Unemployment, Highest Since World War II

"Today is the first anniversary of Reaganomics," Democratic Unity Campaign Director Wayne McDevitt said Wednesday of last week.

"And today the people of North Carolina have Reaganomics to thank for the fact that the unemployment rate is 9.1 per cent."

"In one year, 61,700 people who work in manufacturing and construction have lost their jobs. Nearly 18 thousand textile workers are in the streets, 11.4 thousand construction workers are looking for

work. And even many of those who are still working are working shorter hours. In North Carolina in March of this year 282,800 were unemployed—higher than anytime in the state's history since World War II," McDevitt said.

"And unemployment is not the only area in which people in this state are suffering. Thanks to the Republican tobacco tax increase, tobacco prices are at an all time low. Many farmers are being forced out of business," McDevitt continued.

"There were 10,300 fewer

houses built in the last year because with supply side interest rates people can't afford to own homes any more.

"There were 18,100 fewer cars purchased last year, again because lending rates are high. The economy is as bad as it's ever been and people can't afford it any more."

"The Republican answer to the economy is to let the rich get richer and let the poor and middle class go without. Our Republican Senate and President keep telling us that we'll see the light at the end of the tunnel while they give the rich tax breaks with one hand and double tobacco taxes and plan for new taxes for the middle class on the other."

"One year of unchecked Reaganomics has doubled the national debt. This nation is now running \$100 billion in the red and projections are that with more of the same, the debt may go as high as \$193 billion."

"We need good Democrats in the House if we are going to bring balance back to our country," McDevitt said. "What we don't need are more knee-jerk Republicans willing to roll over and play dead when any bad idea comes across just because the President has invited them to tea and passed out the Presidential seal of approval. We all have got to take part if this country is going to get rolling again," McDevitt said.

She -- When you married me you used to call me a little dear!

He -- Perhaps I did, darling, but since then you've developed into a big expense!

## Weyerhaeuser Highlights

Three employees have been given new assignments in the company's fiber operations.

Nelson Prince has accepted the position of paperboard technical director and Frank Skiles is now fiber processing superintendent and sales service supervisor, according to paperboard production manager, W.A. Redd.

Dave Lavine has been named process engineer in the Fine Paper technical group according to technical director, Dick Fairfield.

Mike Kirkham is the new Customer Service Center Branch Manager at Ephrata, Pa. Kirkham came to the North Carolina Region as Product Supply Manager in 1980. He joined Weyerhaeuser in 1958.

During the transition, Allen Lunsford will be acting Treated Products Team Coordinator, according to Acting Wood Products Manager, Bob Andrews.

Bob Hollatschek contract logging supervisor of the South Coastal Zone at New

Bern, has been elected president of Pro Musica; a group which performs and promotes choral music.

He joined Weyerhaeuser Company May 1977 at New Bern. Assumed his current duties last fall.

Hollatschek, who sings baritone and plays the cello, joined the Pro Musica group in 1980. Both he and his wife, Dottie, have been very active in Pro Musica functions.

Four Weyerhaeuser employees are retiring after several years of service to the company. They are Ted Austin of Plymouth, Harvey Sanford, Sadie Hyman and J.B. Stewart, all of Lewiston.

Also, Howard Daniel, Human Resources Team Member has chosen early retirement. He has agreed to remain in the Fiber Complex until the essential reorganization information he is developing is complete. Daniel has been with Weyerhaeuser for 20 years and in Plymouth since 1976.

It's easy to make promises.

## The Social Security Report - Benefits Increased

RALEIGH — The maximum weekly benefit amount for unemployment insurance increased from \$152 to \$166 on August 1, according to Glenn R. Jernigan, chairman of the N.C. Employment Security Commission (ESC).

"This \$14 increase is the largest single increase North Carolina has had," said Jernigan. "This indicates that wages in our state are increasing as more high paying industries establish operations here."

Under state law, the maximum weekly benefit represents the average weekly insured wage multiplied by two-thirds and

rounded to the nearest dollar. The average weekly insured wage during the calendar year 1981 was \$248.23. For example, in order to receive the maximum \$166 for 26 weeks a claimant must have earned at least \$12,909 of which at least \$4,303 was earned during a high quarter of a base period.

"Our maximum weekly benefit is the highest in our region of eight southern states. (Alabama \$90, Florida \$125, Georgia \$115, Kentucky \$140, Mississippi \$105, South Carolina \$118, Tennessee \$110). On a national basis, Alaska's \$222

is the highest," said Jernigan.

In 1981, more than 384,000 unemployment insurance recipients received benefit payments in various amounts which totaled in excess of \$255 million. Benefit payments are made from the unemployment insurance trust fund to which corporations and employers contribute statewide. Jernigan said, "Most of this money is returned directly to the economy in the form of essential expenditures for food, housing, utilities and transportation."

## Instructed To Cease Filling Prescriptions Of Oralflex

TWINSBURG, OHIO — Due to the decision today to suspend all sales and distribution of the arthritis drug Oralflex by the Eli Lilly pharmaceutical company, Revco pharmacists have been instructed to cease filling or refilling prescriptions for the drug.

According to John P. Kern, vice president of professional operations, Revco customers will receive refunds amounting to the retail value of their remaining Oralflex tablets if they bring them to Revco pharmacies.

Or they can return their remaining tablets directly to Eli Lilly & Co., in Indianapolis, In, (46225) and receive cash refunds of \$1.25 per tablet.

Kern says, "We'd like to emphasize to Revco customers who are Oralflex users to be sure to consult their physicians or to ask our Revco pharmacists to call patients' physicians regarding further use of this

drug."

He adds, "In view of the joint statement of Health and Human Services Secretary (Richard) Schweiker and Dr. Arthur Hayes Jr., and the subsequent suspension by Lilly, Revco wants to protect its customers and insure that they receive their Oralflex refunds."

"Despite our 'middleman' position in this case, we will handle customer refunds if they want us to."

Revco, headquartered in Twinsburg, O., is the nation's largest drug chain, with about 1600 stores in 28 states. The company has sales in excess of \$1.5 billion annually.

## FOR SALE



### Arrowhead Beach Modular Home

1032 sq. ft., 6 years old, two bedrooms, utility room, screened in back, patio in front with awning. Heat pump and wood burning stove. 5 speed ceiling fan.

\$36,750.



103 E. KING ST. AGENTS SINCE 1945

## BLUEBERRIES • PICK YOUR OWN • PERRY'S FARM

Located Between Tyner & Hertford

Bring Your Own Container

Open 8 A.M. - 5 P.M.

Mon. - Sat.

Closed Sunday

Follow Signs

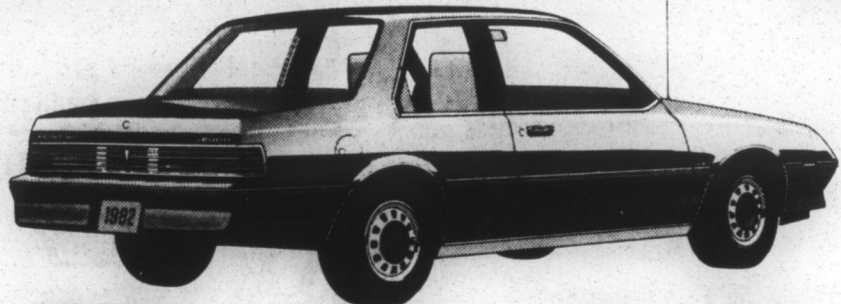
# Pontiac Style Excitement at CLOSE-OUT PRICES

## PONTIAC 6000

Dreams do come true! The most innovatively styled, BEST engineered, BEST handling front-wheel drive automobile is here now! And BEST of all, the 6000 is priced thousands of dollars less than most European road cars. DRIVE THE PONTIAC 6000 ONCE AND YOU'LL NEVER WANT TO DRIVE ANYTHING ELSE!

Call Joe Holley or Ken Worrell...

- SAVE HUNDREDS OF DOLLARS RIGHT NOW!
- GOOD SELECTION TO CHOOSE FROM
- LOW FINANCE RATES
- UP TO 48-MONTH FINANCING WITH APPROVED CREDIT
- FREE CREDIT CHECK
- FREE APPRAISAL ON YOUR CAR



PONTIAC

A car company known for innovative styling and engineering that results in products with outstanding performance and roadability.



40 Hwy. Est.

25 EPA Est. MPG

## PONTIAC J2000

This is the car that makes every driving dollar count. It's EASY on gas, EASY on service and EASY on your pocketbook. The J-2000 is luxuriously equipped, front-wheel drive and great to look at. CHECK IT OUT NOW - YOU'LL SAVE A LOT OF MONEY FOR YEARS TO COME!!

3 Drivers Ed's returned To Us... You Save Hundreds!

43 Hwy. Est. 26 EPA Est. MPG

The Exciting Driving Machines At Unbeatable Prices!

VISIT THE HOME OF THE ★GM★ GIANT



HOKE MOTOR CORP. EDENTON 482-8421 N. Broad St. Ext.

## Manning Tours, Inc.

MYRTLE M. & THOMAS K. PRITCHARD  
615 E. MAIN STREET  
P.O. BOX 385 ELIZABETH CITY, N.C. 27909  
PHONE 338-2272



STRASBURG, VA., WALTON'S MOUNTAIN & THE PASSION PLAY — Aug. 28 - 29  
PENN DUTCH & READING, PA. — AUGUST 3-7 & OCTOBER 6-10  
BUSCH GARDENS — AUGUST 2  
BURLINGTON, N.C. OUTLETS — AUGUST 14, OCTOBER 22-23 & NOVEMBER 6  
KING'S DOMINION — AUGUST 16  
TANGIER ISLAND — AUGUST 21  
LIGHTFOOT SHOPPING & WILLIAMSBURG POTTERY — SEPT. 21, OCT. 2, OCT. 19 & OCT. 30  
NASHVILLE GRAND OL' OPRY & OPRYLAND — OCTOBER 13-17  
Savannah, WALT DISNEY WORLDS EPCOT CENTER, Charleston—Oct. 25 - 31  
Radio City Music Hall "Christmas Spectacular" Show and Shopping in N.Y. City — Dec. 4

CALL OUR OFFICE FOR AVAILABLE SEATS ON REMAINING FAIR TRIPS.  
Only first class transportation (Trailways Bus) and accommodations (In Knoxville, just 7 miles from fair site) will be used!  
COMPLETELY LICENSED, BONDED & INSURED FOR YOUR PROTECTION

## JONES

REAL ESTATE

318 S. Broad St.

Call Terry Jones At 919-482-7522



RIVERTON — attractive brick home featuring, LR, Den, Kitchen - Dining Combo., 3BR, 2 Baths, Utility Room, Garage, Central Vacuum System. Some assumable mortgage at 7 1/4 per cent. \$62,000.

BAYVIEW TRAIL — Attractive brick home on large lot with trees near Country Club featuring LR, Den, Kitchen-Dining Combo, Utility Room, Rec. Room, 3 BR, 2 1/2 baths. \$58,000.

COUNTRY HOME—Two story home. Features LR, DEN, DR, Kitchen, utility room, sewing room, 4BR, 3 Baths. Double garage. Located on beautiful lot. \$135,000. Long term owner financing at 13 1/2 per cent.

MORGAN PARK — beautiful brick home featuring, LR, Den, Dining Room, Kitchen, Utility Room, 3BR, 2 Baths. \$65,000

HISTORIC DISTRICT — Lovely two story colonial home on corner lot. Features living room, den, dining room, kitchen, five bedrooms, garage. Easy walking distance of downtown.

ONE MILE FROM TOWN — Two story brick home one mile from town. Features LR, den (fireplace), dining room, kitchen, four BR, 2 1/2 baths, and garage. Located on an acre of land. 9 per cent assumable. \$69,500.

ON CHOWAN RIVER — Two story brick home, featuring 4 BR, 3 baths, LR, kitchen, den with fireplace plus family room. Deck overlooking the water. \$80,000 with owner financing available.

CHOWAN RIVER — This riverfront home features LR, kitchen, 3 BR, nice bulkheaded lot. \$48,000.

ARROWHEAD BEACH — This home is located on three lots. Features LR, kitchen, DR, 3 BR, 2 baths. \$19,950.

OLD COUNTRY HOME—Needs moving and restoring. \$4,500

BEAUTIFUL WATERFRONT LOTS ON ALBEMARLE SOUND — One half acre in size. Hornblow Pt. \$26,500.

W. HICKS STREET — Lot for sale. \$2,900. Owner financing possible.

MEXICO RD. - FOR SALE — This three bedroom brick home features, large living room, den (fireplace), kitchen, two baths, and garage. \$49,000.

HWY. 17 — Owner financing. 12 year old home on large wooded lot; features LR, den, dining area, kitchen, 3 BR, 1 1/2 baths. \$39,500.

MORGAN PARK — Beautiful brick home on an acre lot. Includes LR, DR, den, library (fireplace), rec. rm., solarium, kitchen, three BR, two baths, double garage and workshop, temp. controlled hothouse. \$98,500

BUILDING LOTS FOR SALE — Commercial & Residential.