

Changing Tax Forms - Are They Easier Or More Confusing

If you think there were a lot of changes in the tax laws recently, wait until you see the new tax forms! At least 51 forms have been redesigned in some way this year, and one completely new form has been added by the IRS.

Major redesigns have been made on the 1040A "short form," as well as the forms for reporting itemized deductions, interest and dividend income, and for income averaging. According to the North Carolina Association of CPAs, all the changes seem to be for the better, but be aware of them so you get all the tax breaks you have coming to you.

For instance, the brand new form, printed on green paper, is an alternative to the 1040 and the 1040A. It will make tax time very easy if you are a single taxpayer with no deductions. This new form, called the 1040EZ, is a one-page return that requires single filers to answer just eleven basic questions.

All you have to do to complete the 1040EZ is write in your name and address, answer the few questions, sign it and enclose your W-2 forms. You can still claim any refund you are due or pay any taxes you owe.

To make matters even easier, the 1040EZ has the

\$1,000 personal exemption line already filled in for you. This figure is subtracted from the total of wages and interest income, to determine your taxable income.

Use the 1040EZ only if you are single, your taxable income is under \$50,000, you have no dividend income and your interest income is \$400 or less (excluding interest from all-saver certificates). It is not designed for someone who can claim any deductions or exemptions for being blind or over 65.

The IRS estimates that 20 million individuals may be eligible to use the new 1040EZ. CPAs generally agree the simplicity of the 1040EZ form will improve taxpayer compliance to tax laws and deadlines.

The IRS has also modified the "short form" 1040A so that it has a "cleaner" look than in the past, and is arranged in a step-by-step format for easy completion.

This new format should help prevent a common mistake made last year when many people forgot to subtract the dollar amount for their allowable exemptions. This resulted in the IRS either making adjustments or sending the return back to the taxpayer for correction.

Ingram Will Approve National Heritage Insurance Company

RALEIGH—North Carolina Insurance Commissioner John Ingram announced in Raleigh he would approve the National Heritage Insurance Company of North Carolina but he noted severe deficiencies in their proposed policy which had not yet been approved. NHIC/NC is a Texas based company created and owned by Electronic Data Systems to offer a conversion health insurance policy to terminated State employees. Such a plan could potentially affect all teachers and other State employees and their families (approximately 450,000). Ingram noted he saw certain deficiencies in the "conversion product" including a \$10,000.00 per annum maximum benefit and the elimination of claims resulting from mental illness. This reduces benefits substantially from the previous Blue Cross conversion product. He added, "This is a step backward for North Carolina." Such items are still considered to be negotiable with Electronic Data Systems (EDS), the parent company of the National Heritage Insurance Company of North Carolina.

substantially increased. Commissioner Ingram concluded that "substantial changes must be made by EDS, the State Medical Plan Trustees or the General Assembly in order to provide adequate benefits for teachers, other State employees and families."

Certain other problems regarding this new health insurance program were satisfactorily worked out during a recent meeting between EDS Chairman of the Board, Ross Perot, and Commissioner Ingram in Dallas, Texas. "The meeting was fruitful," Ingram said. "We discussed several problem areas with Mr. Perot and officials of his office. They seemed to be receptive in the areas we discussed."

As a direct result of Ingram's suggestions, Mr. John Hickey has been named Vice President and Chief Operating Officer of NHIC/NC. Mr. Hickey's specific responsibilities involve the implementation of the health insurance program for North Carolina.

Ingram has spoken out in the past concerning some of the changes made in the Health Insurance Plan for State Employees and Teachers and has been a constant "watchdog" of the proposed program although the Legislature has granted him no authority on the base plan.

Concurrently, Ingram noted that this program is a further departure from the previous Blue Cross program as it is not being subsidized by the Legislature so that premiums paid by the individual policyholder may be



IF YOU'RE NOT SHOPPING AT WINN-DIXIE, AREN'T YOU TIRED OF PAYING TOO MUCH FOR YOUR GROCERIES?

Week After Week After Week, We Beat The Stores That Claim To Be "LOWEST" In Head-To-Head Price Comparisons.

Items Listed Below Were Purchased On The Same Day At Each Store And Are Shown On Each Receipt In The Same Order As Listed.

WINN DIXIE THE BEEF PEOPLE THANK YOU 01/03/83	
TEA BAGS	1.79E
GROCERY	.99E
NON FO	1.99A
DUKES MAYONNAISE	.99E
COMET 110	1.29A
T C COFFEE	1.49E
HUNTS CATSUP	1.49E
12OZ WD FRK	1.49E
W D ROLOGNA	1.49E
POT PIE MORT	1.25E
104/1.00	
2LIT PEPSI	.83E
5B SLI CHEESE	1.19E
4ST COCKTAIL	.50E
102/1.00	
PRODUCE	.75E
PRODUCE	.59E
WD H SAUSAGE	1.49E
PRODUCE	.39E
TAX	.85H
TOTAL	22.46

- 100-ct. Lipton Tea Bags
- 5-lb. Store Brand Sugar
- 12-oz. Cans Ctn. of 6 Miller Lite
- 32-oz. Dukes Mayonnaise
- 21-oz. Liquid Comet
- 8-oz. Taster's Choice Instant Coffee
- 24-oz. Hunt's Catsup
- 12-oz. Store Brand Franks
- 16-oz. Store Brand Bologna
- 8-oz. Morton Pot Pies
- 2-Liter Pepsi
- 16-Singles Store Brand Cheese
- 15-oz. Store Brand Fruit Cocktail
- 10-lb. Potatoes
- Lettuce
- 16-oz. Store Brand Whole Hog Sausage
- 1-lb. Carrots

FOOD TOWN LFP/NC/SC/VA/GA 01/03/83	
GROCERY	1.89 L
GROCERY	1.39 L
NON-FOOD	2.29 D
GROCERY	.99
NON-FOOD	
GROCERY	4.75 L
MEAT	1.11 L
MEAT	1.59 L
PERISHBL	1.69 L
163/1.29	.43 L
GROCERY	.65 L
PERISHBL	1.29 L
GROCERY	.39 L
PRODUCE	.99 L
PRODUCE	.99 L
MEAT	.59 L
PRODUCE	1.89 L
PRODUCE	.40 L
SUBTOTAL	24.21
4% TAX	.97
TOTAL	25.18

WINN-DIXIE TOTAL

\$22.46

FOOD-TOWN TOTAL

\$25.18

Winn-Dixie's Combination Of EVERYDAY LOW PRICEBREAKERS, And DEEP-CUT PRICE BREAKER SPECIALS Offer You Unbeatable Savings.

Make your own comparison and you'll discover what hundreds of thousands of Winn-Dixie Shoppers already know....

NOBODY SAVES YOU MORE THAN WINN-DIXIE!

*PRICE SURVEY DONE ON 1-3-83 SOME PRICES MAY HAVE CHANGED SINCE THAT TIME.

Wives Are Reason For Success

Most highly successful farmers rate their wives as the No. 1 reason for their success, according to the January/February issue of PCA FARMING magazine.

PCA FARMING is sent to area farmers as a service of the local Production Credit Association. The story entitled "Hats off to farmwives" is based on an interview with Hiram Drache, a farmer, author and professor of economic history at Concordia College, Moorehead, Minnesota.

Drache interviewed hundreds of highly successful farmers in the course of research for his writings and teachings. Those interviews revealed six qualities, which he calls the six Ms, that set high achievers apart from the average farmer. In order of importance, those six Ms. are: mate, motivation, management, money, marketing and mechanization.

"A farmwife motivates and sustains her husband during the bad times," says Drache. "She's stabilizing influence during the good times. And da... she helps him manage the farm."

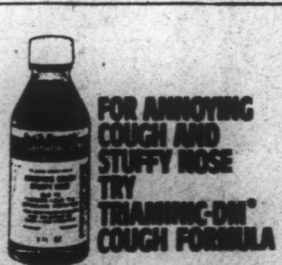
The topic of management, Drache says most successful farmers mentioned adversity as a turning point in their farming careers. "In

adversity, farmers learn their own strength. I see the current economic situation revolutionizing farming. It is forcing farmers to take a new look at their management and the technology available and put it to better use," he explains.

Regarding money, how you handle credit is what's important, not how much capital you start with. Drache advises farmers to present their lender with a tight budget this year that demonstrates their management ability. "And always go in as a couple. This shows your determination to succeed," he states.



To accelerate the baking of a potato, first boil it for about ten minutes.



FOR ANNOYING COUGH AND STUFFY NOSE TRY TRAMINON™ COUGH FORMULA

© 1982 Dorsey Laboratories, Division of Sandus, Inc., Lincoln, Nebraska 68601