

# MEATY SAVINGS

Yours For Lower Food Bills!

**S&R CHOICE**  
**Boneless Stew Beef**  
**Beef Charcoal Steak**  
 THICK CUT  
**London Broil**  
**Texas Steak**  
**Minute Steak**  
**Jiffy Steak**  
 YOUR CHOICE **lb. \$1.78**

**S&R CHOICE, BONELESS**  
**Chuck Roast..... lb. \$1.68**  
**S&R CHOICE, BONELESS**  
**Beef Short Ribs... lb. \$1.68**  
**S&R CHOICE, BONELESS, ROLLED CROSS**  
**Rib Roast.....lb. \$1.89**  
**S&R CHOICE, FAMILY PAK**  
**Beef Cubed Steak**  
**lb. \$1.99**

## Perdue Specials

**Fresh** **lb.** **FAMILY PAK** **lb.**  
**Fryer Wings .... 59c** **Fryer Legs ..... 69c**  
**Family Pak - Fresh Cut**  
**Fryer Legs**  
**lb. 79c**

**Fresh Whole (cut into Chops and Roast)**  
**Pork Loin ..... lb. \$1.17**  
**Quarter Sliced**  
**Pork Loin ..... lb. \$1.49**  
**Loin-End**  
**Pork Roast..... lb. \$1.59**  
**Market Style**  
**Pork Ribs..... lb. \$1.59**  
**Center Cut**  
**Pork Loin Roast ..... lb. \$1.69**  
**Country-Style**  
**Backbone ..... lb. \$1.59**  
**Center Cut**  
**Pork Chops ..... lb. \$1.79**  
**S&R Choice Bone-in, Full Cut**  
**Round Steak ..... lb. \$1.49**  
**Boneless ..... lb. \$1.69**  
**S&R Choice**  
**Top Round Steak ..... lb. \$1.99**  
**S&R Choice**  
**Sirloin Tip Roast..... lb. \$1.99**  
**S&R Choice Boneless**  
**Sirloin Tip Steak ..... lb. \$2.39**  
**S&R Choice**  
**Eye Round Steak ..... lb. \$2.69**  
**S&R Choice Boneless**  
**Chuck Roast ..... lb. \$1.48**  
**S&R Choice Boneless**  
**Shoulder Roast ..... lb. \$1.58**

**Frosty Morn** **Lb.**  
**Sliced Bacon \$1.39**  
**12-oz. Frosty Morn** **pkg.**  
**Meat Franks.. \$1.19**  
**Camellia Sliced** **Lb.**  
**Beef Bologna \$1.49**  
**Camellia Sliced** **Lb.**  
**Meat Bologna \$1.39**  
**12-oz. Camellia**  
**Spiced Luncheon**  
**pkg. \$1.29**  
**12-oz. Camellia**  
**Cooked Salami**  
**pkg. \$1.29**

## Grocery Department

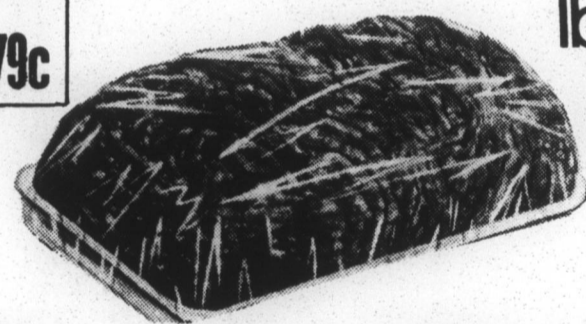
**Mrs. Filbert's**  
**Mayonnaise ..... qt. 99c**  
**Self-Rising**  
**Famo Flour ..... 5 lb. Bag 88c**  
**Sauer's**  
**Black Pepper ..... 1-lb. can \$1.79**  
**6.5-oz. Empress**  
**Chunk Lite Tuna (in water) ..... 68c**  
**Sunshine (Salted or Unsalted)**  
**Krispy Crackers ..... 1-lb. box 79c**  
**Oyster Crackers ..... 12-oz. 99c**  
**Chip-A-Roos ..... 12-oz. \$1.09**

**Long Acre - 1 3/4 - 2-lb. Average**  
**Turkey Buffet Ham ..... lb. \$1.99**  
**Long Acre, Brown and Roasted 1 - 1 1/2-lb. Average**  
**Turkey Breast..... lb. \$2.79**  
**Long Acre 1 - 1 1/2-lb. Average**  
**Smoked Turkey Breast ..... lb. \$2.79**  
**Long Acre 1 - 1 1/2-lb. Average**  
**Turkey Pastrami ..... lb. \$2.29**  
**Long Acre**  
**Turkey Franks..... lb. 79c**  
**Long Acre**  
**Chicken Franks..... lb. 79c**

**Van Camp Specials**  
**7 3/4-OZ.** **16-OZ.**  
**Beanie Weenies** **Pork and Beans**  
**2 for 88c** **2 for 88c**  
**15-OZ.**  
**Kidney Beans ..... 2 / 88c**

**1-LB. PKG. MRS. FILBERT'S GOLDEN QUARTERS**  
**Margarine ..... 2/98c**  
**8-OZ. BANQUET, CHICKEN, TURKEY, BEEF**  
**Pot Pies ..... 2/77c**  
**20-OZ. CELESTE, PEPPERONI**  
**Pizza ..... \$2.69**  
**1/2 GALLON CARTON BREYER'S**  
**Ice Cream ..... \$2.09**  
**6-PACK SEALTEST**  
**Ice Cream Sandwiches..... 99c**

**Fancy Yellow** **3-lb. bag** **Washington State Red Delicious**  
**Onions ..... 49c** **Apples ..... lb. 28c**  
**Fresh Green** **32-ct. Size Florida Marsh Seedless**  
**Cabbage ..... lb. 10c** **Grapefruit ..... 5/\$1.00**  
**U. S. No. 1** **10-lb. bag** **Garden Fresh** **2-lb. bag**  
**White Potatoes ..... 88c** **Carrots ..... 49c**



## Ground Chuck

**lb. \$1.48**

**18 1/2-OZ.**  
**Duncan Hines Cake Mixes..... 69c**  
**16 1/2-OZ.**  
**Duncan Hines Frostings ..... \$1.19**  
**Ragu Homestyle**  
**Spaghetti Sauce ..... 32-oz. \$1.49**  
**Post Toasties ..... 18-oz. 88c**  
**24-oz. Log Cabin**  
**Country Kitchen Syrup ..... 99c**  
**2-oz. O&C**  
**Fried Onion Rings ..... 65c**  
**2 Liter**  
**Pepsi, Pepsi Free, Diet Pepsi**  
**or Mountain Dew ..... 99c**  
**12-oz.**  
**Old Milwaukee Beer..... 12/\$3.99**  
**7-oz. Plain or BBQ**  
**Wise Potato Chips ..... 89c**  
**8-oz. Bag Wise**  
**Puffed Cheese Doodles ..... 89c**

**15 1/2-OZ. VETS**  
**Dog Food ..... 4/88c**  
**GIANT ROLL, SCOTT**  
**Paper Towels ..... 68c**  
**4-ROLL PKG. WALDORF**  
**Bathroom Tissue ..... 88c**  
**200-CT. PKG. SCOTTIE'S**  
**Facial Tissue ..... 88c**  
**8.2-OZ. AQUA FRESH**  
**Toothpaste ..... \$1.39**  
**12-OZ. AJAX**  
**Dishwash Detergent.. 59c**  
**33-OZ. DOWNY**  
**Fabric Softener ..... 99c**  
**12-OZ. BORDEN, AMERICAN SINGLE**  
**Cheese ..... \$1.29**

**12-OZ. TEXAS STYLE**  
**Biscuits ..... 4/\$1.00**  
**1/2 GAL. CARTON CAMELLIA**  
**Apple Juice ..... \$1.09**  
**8-OZ. NORDICA**  
**Yogurts ..... 3/\$1.00**  
**24-OZ. SEALTEST**  
**Cottage Cheese..... \$1.59**  
**8-OZ. SEALTEST**  
**Sour Cream ..... 59c**  
**3-OZ. LIBBY'S**  
**Potted Meat ..... 3/88c**  
**5-OZ. LIBBY'S**  
**Vienna Sausage.... 2/98c**



### SUPER MARKETS

QUEEN ST. IN EDENTON  
 EDGEWOOD SHOPPING CENTER  
 HUGHES BLVD - EHRINGHAUS ST.  
 HIGHWAY 64 IN MANTEON, N.C.  
**• OPEN DAILY**  
**8:00 A.M. 'Til 10:00 P.M.**

PRICES IN THIS AD BECOME EFFECTIVE MARCH 9 AND WILL CONTINUE THRU MARCH 12, EDENTON STORE ONLY. FOOD STAMPS WELCOME.