

WHY THAT LAME BACK?

That morning lameness — those sharp pains when bending or lifting make work a burden and rest impossible. Don't be handicapped by a lame back—look to your kidneys. You will make no mistake by following this Beverly resident's example.

Mrs. S. C. Hale, Whitmire St., Beverly, N. C., says: "I had a bad time with my kidneys and back. I had a dull, aggravating ache over my kidneys which made me feel tired out. When I bent to dust or sweep, sharp pains darted through my back and I could hardly straighten. Dizzy spells came before my eyes. Mornings I was tired and run down and my kidneys didn't act properly. Having of Doan's Kidney Pills, I got some and they entirely cured me."

CLOTHES CLEANED AND PRESSED

ALL WORK GUARANTEED WE CALL FOR AND DELIVER Arcade Pressing Club Under J. W. DAVIDSON'S Store Phone 85 MURPHY, N. C.

OFFICE MAN WANTED!

Wanted capable young man to become office assistant, time keeper, and general understudy for large concern in this section. Good opening for right party and chance for advancement. Reasonable salary to start.

For Further Information, Apply

THE CHEROKEE SCOUT

MACON COUNTY PRISONERS ESCAPE FROM SHERIFF

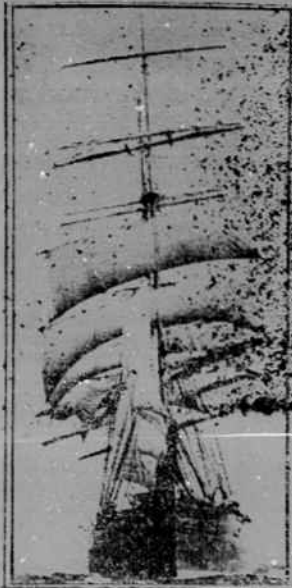
Jumped from Window of Moving Train Near Greensboro—Were Convicted of Breaking Store

FRANKLIN, Aug. 28.—Word reached here last night that the two Weaver brothers, recently convicted here for larceny, escaped from Sheriff Alex Moore near Greensboro Monday, as they were on their way to serve sentences in the State Penitentiary. The Weaver brothers asked to go into the lavatory of train No. 12 and entering the room they locked the door when the Sheriff waited outside for them. They raised the window and leaped to their freedom, handcuffed together, while the train was in motion. Sheriff Moore soon discovered the escape of his prisoners and notified the local police at Greensboro and a search was instituted but as a 10:40 today the prisoners had not been apprehended.

The two prisoners were Volley and Lawrence Weaver, aged 25 and 18, respectively, who were convicted in the superior court last week of breaking and entering a store about six miles from Franklin and taking merchandise valued at about five hundred dollars. The elder Weaver drew a sentence of six months in the penitentiary while the younger Weaver was given four years in the state's penal institution by Judge T. D. Bryson.

Sheriff Moore is at a loss to understand how the two prisoners, handcuffed together, made their exit through the window eight inches

Did This Vessel Meet the Fate of The "Cyclops"?



What has been the fate of the picturesque "Barkating Alta," shown above, which has been posted as "missing" at sea since the stately ship unfurled by sails at Los Angeles Harbor last February, and put out to sea for Puget Sound? Was it lightning, a floating mine, or treachery?

high and fifteen inches wide in the lavatory. But the fact remains that they made their escape.

Both boys are residents of Asheville and the elder one has served a sentence on the Macon County roads for boobying. Their father is dead but their mother lives in Asheville.

Young Harris College To Open Next Week

Young Harris College will open for the fall session Tuesday and Wednesday of next week, according to information brought to Murphy. It is understood that registration will be held Tuesday and Wednesday and that class work will begin the middle of the week.

MANY FARMS EQUIPPED TO GENERATE OWN ELECTRICITY

No Need to Wait for Power Companies—Individual Plants Now in Use.

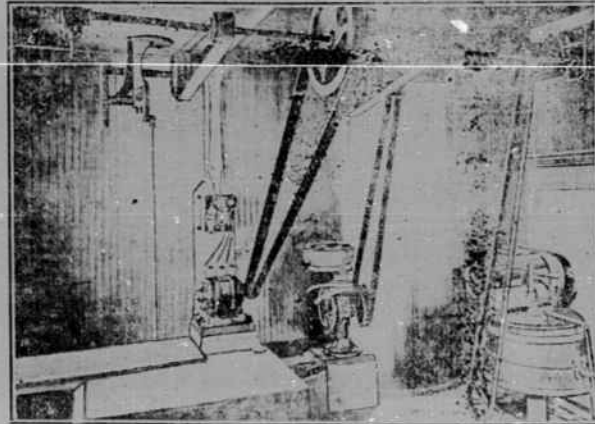
"Well, guess I've logged my last pall of water on this farm!" "And I don't believe I'll ever have to wash another lamp chimney or trim another lamp wick and get my fingers smelling kerosene."

Such is the conversation between the farmer and his wife the morning after a farm light and power set goes into action on their farm. Although they may be located beyond the reach of any power company's lines, they

ment hidden away in the cellar of the house. In effect the farmer has his own independent electric light and power system, which he owns himself and operates solely for his own farm.

City Comfort in Farm Houses There are some farmers who are veterans in respect to electrical farming. They were among the first to purchase these units. Some of them have told how they feel about this invention after giving it a stiff practical test. In general their observation is that they never knew what "easy work" meant before they got electricity by means of this apparatus.

In these farm houses life has the aspect of a city home. An electric



Four Operations at Once—1 Horsepower Motor Driving Pump, Churn, Washer and Cream Separator.

get electricity just the same by making it themselves.

Trade reports indicate that numerous farms which are thus situated are meeting the problem in just this way. They are putting in self-contained electrical plants, each one consisting of a gas engine which burns oil, usually plain kerosene, and a generator which produces electricity. Such sets, ranging from one to four kilowatts capacity, have proved great burden-lifters to farm families.

They bring about the same transformation which would come to pass if the farm in question could purchase electric energy from a power company. And the power company might be a long time extending its lines far enough into rural districts so that these particular farms could benefit therefrom.

Farm Makes Own Electricity The farm light and power set is usually installed in the cellar of the farm house. Once put in it is simple to operate, and the electricity generated by the generator is fed into a storage battery and can then be used for lights or for driving motors or water pumps.

The farm house can be thoroughly wired if a farm light and power set is used, just the same as if the electricity came from some power company's line. The wires can also be extended all over the farm. There can be electric lights in the barn, electric motors at the grinder, the corn sheller or the wood saw.

If it is a dairy farm electrically driven milking machines can milk the cows, electric motors can run the churn and the cream separator. The electric current, in whatever part of the farm it may be used, comes originally from the compact little equip-

ment hidden away in the cellar of the house. In effect the farmer has his own independent electric light and power system, which he owns himself and operates solely for his own farm.

fish washer handles the dishes after a hearty meal for the family and the hired help. An electric clothes washer gets rid of the druggery of the big weekly wash. On a hot day an electric fan cools the air. An electric vacuum cleaner keeps the house clean and does it without filling the air with dust.

And in such farm houses no one is seen filling kerosene lamps or washing



Washing Clothes the Electrical Way lamp chimneys or going down cellar with a candle. Instead a switch is turned as quickly as the wink of an eyelash and instantly all the light one can wish for fills the room.



Heres Relief

Why suffer from nervousness, insomnia, hysteria, nervous dyspepsia, nervous prostration or any ailment due to a disordered condition of the nerves?

DR. MILES NERVINE

will give you prompt and lasting relief.

Its products refreshing sleep, builds up shattered nerves and promotes a normal distribution of nerve force.

Your Druggist Sells It, Ask Him.

Advertisement for Theford's Black-Draught Liver Medicine, featuring a bottle illustration and text: 'Theford's BLACK-DRAUGHT Liver Medicine (Vegetable)'.

Advertisement for 'TEST THE THREE BRANCHES OF OUR BUSINESS' including cleaning, pressing, and repairing services.

Advertisement for 'New Model Tailoring & Steam Pressing Club' by A. M. WILEY, Proprietor, located at Rear Dr. Wells' House.

Big Price Drop 1924 WILLYS-KNIGHT and OVERLAND Great Improvements-

These new prices and improvements announced last week have electrified the public! People tell us that nothing else compares:

- Willys-Knight 5-Pass. Touring - - - - - Now \$1175
Willys-Knight 2-Pass. Roadster - - - - - Now 1175
Willys-Knight 5-Pass. Coupe-Sedan - - - - - Now 1550
Willys-Knight 5-Pass. Country Club - - - - - Now 1635
Willys-Knight 5-Pass. Sedan - - - - - Now 1795
Willys-Knight 7-Pass. Touring - - - - - Now 1435
Willys-Knight 7-Pass. Sedan - - - - - Now 1995

Bigger, Much More Powerful New Engine in All Overland Models

- Overland Touring with bigger new engine - Now \$525
Overland Roadster with bigger new engine - Now 525
Overland Coupe with bigger new engine - - Now 755
Overland Sedan with bigger new engine - - Now 860
The Big, Powerful Overland Red Bird - - - - Now 750

Both Willys-Knight and Overland models are improved, refined, better cars than ever before. The greatest sales and largest production in Willys-Overland history have made possible these greater values which, we believe, lead the world by a wide margin.

All Prices F. O. B. Toledo. We reserve the right to change prices and specifications without notice.

E. C. MOORE, Dealer

Owl Creek

We are having a good Sunday School at this place.

Mr. Robert McKee has returned from Washington to spend a few weeks with his parents.

Mr. Samuel Kephart has returned home from his work.

Mr. Will Spencer, of this place, has spent the past two weeks at Hangingdog.

Mr. Henry Kephart arrived home from Grandview Saturday evening. He has been at work there.

Mrs. Nancy Palmer spent the past two weeks at Murphy with her son and daughter.

Mr. Ray Kephart and wife spent the past week at Andrews with their son, Earl, who has been quite sick, but is recovering now.

FOR SALE—An Oliver typewriter, practically new. A bargain. See Mrs. S. C. Watkins, City. (11-p)

FOR SALE—One "Florence" oil cook stove. For information apply to Mrs. Stoncipher at the Banglow. (11)

SUBSCRIBE TO THE SCOUT

Quality Price and Service

THE FIRST THING WE CONSIDER IN BUYING GOODS IS THE QUALITY. EVERYTHING WE BUY IS BASED ON THIS.

This is why we guarantee everything we sell, for we know our Goods will give SERVICE.

The Prices are always as low as the market will allow on goods we handle. Our service has got to please you. Nothing pleases us more than to serve our customers.

THIS WEEK'S SPECIAL Lot high grade China Matting, Worth 60c. now, per yard ... 48c

Townson & Anderson

"EVERYTHING FOR THE HOME" MURPHY, N. C.

Join Murphy's Chamber of Commerce and Watch Murphy Grow!

FOR Lime Cement and Plaster SEE

W. M. FAIN GROCERY COMPANY Opposite L. & N. Station Phone 101