

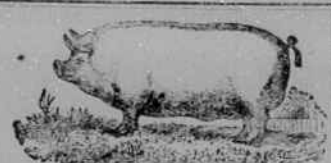
THE FEATHERHEADS



THE SCOUT'S FARM NEWS SECTION

OF CHEROKEE AND CLAY COUNTIES

Conducted by
R. W. Gray, Agent Cherokee county W. R. Anderson, Agent Clay County



Lime the Soil

In studying the soil of Cherokee county I find that most all the soils are lime. All of our bottom lands

need it very badly. The hilly and clay lands will be benefited greatly by the use of the lime. Some experiments have shown that the crops have been doubled the first year. We can get limestone in the raw state at Regal which tests very high at a very good price and if any farmer that has need of lime will see me I will gladly tell you of the benefit to be derived from lime.

I feel sure that every dollar that you spend in this way will return to you doubled in the next few years. Several farmers have placed their orders and they will get their lime out on the ground in the next few days.

It should be spread on the ground after it has been turned and harrowed into the soil.

Do not delay for this means money to you.

R. W. GRAY.

Best Feeds For A Dairy Cow

Hayesville, March 13—Mr. F. R. Farnham, Dairy Specialist, for N. C. State College, has been assisting the Clay County Agent in dairy work. Mr. Farnham met with those interested in dairy farming over the county either in Dairy Barn Schools or in public meetings. The interest that dairy work is creating is wonderful. It is moving up over branch and cove.

The work done this week in dairy work was not to expand and grow in scope so much as it was to increase in efficiency. The average man beginning the dairy work gets his cows in the spring, they will give a good flow of milk on grass, he gets along well until grass dies. This average man has not planned for winter, so

he finds his barns filled with wild grasses, corn fodder shucks and straw, perhaps some tame grasses. These feed with corn are good mule feed, but the very poorest cow feeds.

The cow is an animal with four large stomachs, and with capacity to consume a large quantity of roughage. By taking the advantage of this you can get a heavy flow of milk and produce a large quantity of butter fat from roughage of the right kind. The cow is a roughage eating animal rather than a grain consuming animal, and it pays to produce all the milk flow possible from the roughage before you use grain. Grain should only be used with those high producing animals, whose milk flow cannot be maintained on roughage.

The best roughage to produce milk in our counties are soy beans and silage. In case you cannot keep eight or ten cows, you would not want a silo, in this case you could replace silage with stock beets. There can be a large amount of these mangels grown on a small area. Every man that intends to do dairy farming should prepare his winter feeds.

The feeds for a cow for winter or six months would be the following: two (2) tons of soy beans hay, three (3) tons of beets (mangels). If you did not feed her any other feeds your cow would give a good flow of milk. You could supply a heavy producing cow's ration with the following grain: 15 bu. corn (ground) three bags of cotton seed meal, 200 lbs. of wheat brand and 10 bu. of oats. Two acres of land should produce feed at this rate, when you buy the three bags of cotton meal, and 200 lbs. of brand, one acre should produce two tons of soy beans hay, and common land should produce corn and oats at the rate of 25 bu. per acre. You can

produce an enormous amount of beets on an acre, Mr. Bert Slagle, Macon county, has been reported to have grown 22 tons on one half acre.

Now multiply the amount above by the number of cows you will keep and it will give you the amount of feed you will need to grow.

If you will provide this kind of feed in this quality for your cows and keep good common cows they will net you under fair management \$100.00 per cow per year.

Lime an acre of land, some thin stiff hillside, and try an acre of White Sweet Clover, for grazing, for further information call on your county Agent.

Yours very kindly,
W. R. ANDERSON.

CASTORIA

For Infants and Children
In Use For Over 30 Years
Always bears the Signature of *W. A. Stearns*

CULBERSON

Mr. Frazier L. & N agent here left a few days ago for Etowah, Tenn., where he has accepted a position. J. B. Hawkins Jr., of Blue Ridge has taken his place.

Our school closed a successful term here Thursday night with very nice and appropriate exercises.

Miss Ida Lou Hyatt Sallee and Pauline Kisselburg graduated in the eighth grade.

Prof. Fulton Thomson, Ruby Pool and Grace Freeman who taught us a good school and made many friends here left Saturday for their homes. L. B. Collins who has a position in Florida came in this week to spend a few days with home folks.

Mrs. W. H. Anderson who is past 80 years old is critically ill with pneumonia at this writing.

S. L. Kisselburg carrier route No. 2 made a business trip to Murphy Monday.

We have a good Sunday school started here. L. W. Shields is sup.

Look Here

We have a lot of good farms, towns property, and timber lands.

TO SELL YOU

also a good flour and corn mill complete.

IF INTERESTED CALL ON OR WRITE

W. A. Bryson
REAL ESTATE
MURPHY, N. C.

Bad Color (liver trouble)

"OCCASIONALLY I am troubled with spells of constipation and inactive liver," says Mrs. John L. Pence, Broadway, Va. "I always use Thedford's Black-Draught when I feel a spell of this kind coming on, for it saves me a bad headache. My color gets sallow at times. I get real yellow, showing that the trouble comes from the liver.

"I have found Black-Draught to be the finest kind of a remedy for this. I take Black-Draught and make a tea out of it, and take it, along in small doses for several days. I have never found anything that served me so well.

"Since I have known about Black-Draught, I have not suffered nearly so much with headache, caused from indigestion. If I find my tongue is coated, and I wake up with a bad taste in my mouth, I know I have been eating indiscreetly, and I immediately resort to Black-Draught to straighten me out."



Effective March 10

\$50 Price Cut HUDSON-ESSEX

And applying on HUDSON BROUGHAM, HUDSON COACH and ESSEX COACH. This is in addition to the tax reduction made February 27th, and is for cars equipped with front and rear bumpers, electric windshield cleaner, rear view mirror, transmission lock (built in), radiator shutters, moto-meter, combination step and tail light.

"At Your Door" Cost
Nothing More to Pay

- ESSEX 6 COACH - - \$ 854
- HUDSON COACH - - \$1299
- Hudson Brougham - - \$1554
- Hudson 7-Pass. Sedan - \$1795

Convenient Purchase Terms

Don't be misled by F. O. B., or factory list prices. TO SUCH PRICES MUST BE ADDED freight, tax, handling and sundry other charges which greatly increase the actual cost. HUDSON-ESSEX prices are those you pay for delivery AT YOUR DOOR. They include freight and tax at the new low rate. No delivery, handling or other charges are made.

Buy Now For Prompt Delivery
E. P. HAWKINS, Dealer

CANDLER'S

Spring Bargains

Mens Blue Chambray Work Shirts	59c	50 Pairs Ladies' Oxfords and Shoes	\$1.98
2 lb Can Pork and Beans, Armour's	10c	Bontex Novelty Silk Goods 36 in. yd.	98c
House Dresses, All Colors	49c	Ladies' Silk Dresses, Value \$10.	\$5.98
32 inch Gingham's	10c	9-4 Peperell Unbleached Sheeting yard,	45c
Mens Hats Worth Up to \$1.50	89c	25 pair Mens Flor-sheim oxfords to Close Out,	\$3.98

New Spring Dresses, Coats and Dress goods for Easter now on display.

Ladies' New Spring Slippers Black Satin, Patent Leather and Blonde Kid. Hosiery to match.

Candlers Department Store
MURPHY, N. C.