

# The Cherokee Scout

MURPHY is the Jobbing Center of Extreme Western North Carolina, North Georgia and East Tennessee, and is Served by Two Railroads.

The Leading Weekly Newspaper in Western North Carolina, Serving a large and Potentially Rich Territory in this state

VOLUME XXXVIII NUMBER 6

MURPHY, NORTH CAROLINA, TUESDAY, SEPTEMBER 17, 1926

5c COPY—\$1.50 PER YEAR

## MURPHY HAS LARGEST SCHOOL IN HISTORY

Murphy has the largest school in its history. The enrollment this year exceeds that of last year at this time of year by sixty. At the end of the first week last year 430 had entered. At the end of the first week this year 487 were enrolled. The first of this week saw the entrance of several others, so that the total enrollment before the week is over will be hovering around the 500 mark. By the end of the year last year the enrollment only reached 471. There were 120 in the high school and 260 in the grammar grades last Friday. The enrollment in both departments has increased some this week. Last year the enrollment in the high school by the end of the year had reached only the 112 mark. A great many of those in the high school are boys and girls from the rural districts of this part of the county.

Doctors Hershey and Tannelton, ministers of Florida towns, who are spending some days here, visited the school Wednesday morning of this week. Dr. Hershey addressed the children at the Chapel hour and Dr. Tannelton led the prayer. In his remarks the speaker urged the children to strive for four things: good health, successful usefulness and happiness. The first two goals were stressed most, the speaker pointing out that true happiness can come only to those who are useful, those who strive.

The Friday morning chapel programs, beginning October 1st, will be in charge of the grades, beginning with the seniors. Parents are urged to visit the school especially on these mornings when the grades are in charge, stated the superintendent this week.

## Mrs. Hill Presents Library With Books

Following is a list of books presented to Murphy Public Library by Mrs. C. B. Hill, which have been placed in the shelves and are now ready for the public:

Algin—Telegraph Boy, Patchin—Pony-rider-boys in the Rockies, Henry—Lion of the North, Beach—Auction Block, Thompson—Uncle Jeremiah and Neighbors at St. Louis Exposition, Ellis—Boy Captive, Maitland—Boy Scout Aviators, Stephens—Fox Hunting, Cheslen—Young Wallingford, Grey—Heritage of the Desert, Reed—Weaver of Dreams, Hope—Blythe Girls, Rinehart—When a Man Marries, Fletcher—At the Gate of the Fold, White—Secrets of the Storm Country, Fox—Cumberland Vendetta, Grey—Betty Zane, Cady—Story of the Wild West, Morris—Story of the Great Earthquake of 1908, Lamb—Tales from Shakespeare.

## Costume Jewelry Trends to Elaborate Designing



Fashion's latest sensation registers in the form of a jewelry ensemble which matches the earrings to the elaborate pendant necklace. Just how strikingly beautiful such a composite set can be is told in this picture of lovely Estelle Clark, whose success on the screen has been so flattering. The necklace which she wears is of antique Florentine workmanship, each pendant, with matching earrings, being exquisitely wrought in gold filigree—and the best of it all is that this beautiful ensemble was a gift from Estelle's father, who brought it to her from Venice, Italy.

## The Car Is Waiting



## Boys and Girls Leave Murphy For College

The college boys and girls are getting away to school these days or are making plans to leave within the next week or two. Howard Moody, Frank Walsh, Robert Wells, and Herbert McCall have gone to the University; Mary Bell to the Greensboro College for Women; Lucius Cope to Wake Forest College; Kathryn Thompson will leave this week-end for Virginia Inter-mont College; Albin Richardson will leave early next week for The University of Tennessee; Harvey Akin is at Annapolis, H. A. Mattox has gone to Georgia "Tech"; Bertha Crain is at Berea; and Elizabeth Ford at Cullowhee.

Thus, eleven boys and girls are going out of this community this year to various college and universities. Four or five years ago there was scarcely one. There are a number of older college men and women among the professions and business firms but most of them have come into Murphy at one time or another. The general movement for higher education apparently has just begun to make itself felt in this section. This movement has doubtless been hastened by the general development of the community as a result of the opening of the roads; and by the ever increasing effectiveness of the public and high schools of the section. It is expected that the time will soon be here when every graduate of the high school will enter some institution of high learning.

## Mrs. Cooke Dies At Culberson

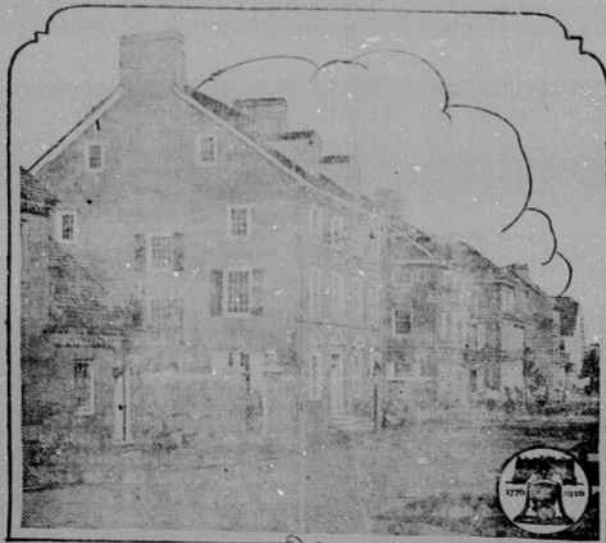
Mrs. F. H. Cooke, of Culberson, N. C., Rt. 1, died Thursday night at 8 o'clock, September 5, 1926.

The community was cast in deep gloom Thursday night when word was received that Mrs. Martha Cook was dead. She had been in poor health for about two years. She was 67 years, one month and 5 days old. Early in youth she united with the Methodist church and remained an active member until her health failed her.

Surviving are the husband and following children: Mrs. C. B. Raper, of Union County, Georgia; Luther Cook, William Cook, Edd Cook, Miss Bertha Cook, of Culberson, N. C.; Clarence Cook, of Blairsville, Ga.; Clinton Cook, Mrs. E. L. Townson, of Murphy, N. C.; two sisters and two brothers, Mrs. W. H. Lance, of Chillicothe, Texas; Mrs. John Thompson, of Oklahoma; Daniel Little of Clever, Mo.; F. T. Little, of Springfield, Mo. She was loved by all who knew her and leaves many friends to mourn her loss.

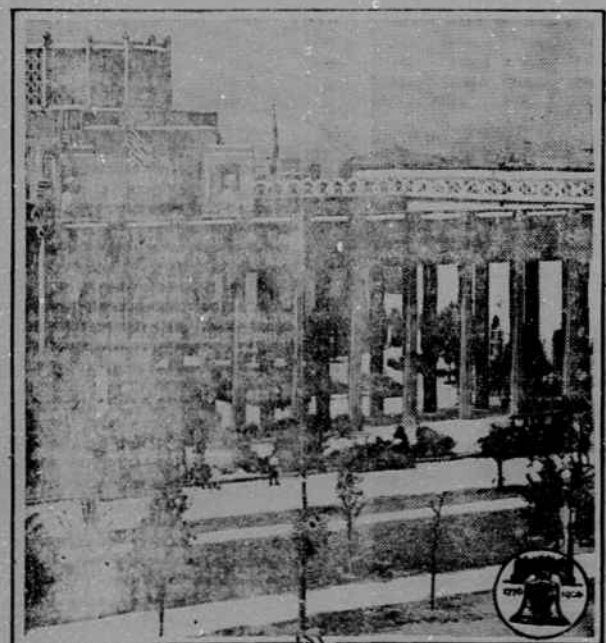
The funeral services were held at Macadonia Church, Saturday morning at 10 o'clock, by Rev. Noble.

## The Philadelphia of Our Ancestors



Here is shown a section of "High Street," a reproduction of Philadelphia's famous Market street in the days of 1776. It is one of the outstanding features of the Sesqui-Centennial International Exposition now being held in Philadelphia to commemorate the 150th anniversary of the signing of the Declaration of Independence. Every building has been built to actual size and in actual architectural detail. The furnishings of each building are exact reproductions of those used in the Revolutionary days. Many of the pieces on display are the originals and today are worth thousands of dollars because of their historic value. The Exposition continues until December 1.

## Pennsylvania's Contribution to the Sesqui



Here is the Keystone State's building at the great Sesqui-Centennial International Exposition at Philadelphia, celebrating 150 years of American independence. In this huge structure Pennsylvania is displaying her progress from the arrival of Penn to the present day. The building is one of the handsomest on the big exposition grounds and has proved a rendezvous for hundreds of thousands of people who have come from near and far to see the magnificent exhibits established by forty-three of the leading nations of the world. The Exposition continues until December 1.

## Lions Club Met Tuesday Night

The Lions Club met Tuesday night in the basement of the Methodist Church from five thirty to six thirty o'clock; the Lions bringing their wives, as it was Ladies' night. Dr. Hershey of Lake Helen, Florida was the guest of honor for the evening and addressed the Lions after dinner had been served. He was eloquent in his praise of the section about Murphy, declaring it to be one of the most beautiful and attractive places he had found in his travels over the entire United States. He mentioned specifically the natural beauty, the climate, the streams, and the cordiality of the people. He urged the Lions to provide more summer cottages and hotels for summer visitors and continue the spirit of friendliness and goodfellowship now manifested toward strangers.

Mr. Don Witherspoon of the Chamber of Commerce, responded to the address of Dr. Hershey. In the absence of President Fain, Dr. Edward E. Adams presided.

## New Furniture Store For Murphy

Announcement is made this week of the opening of a new furniture store for Murphy by W. R. Smith, of Bryson City. The store is located in the old Grant Building between Davidson & Carringer's and the Murphy Bakery.

The new business will be known as the Smith Furniture Company, and will feature a complete line of furniture, stoves and ranges, Victrolas and records.

Several carloads of furniture have already arrived and been displayed and other goods are arriving daily. Mr. Smith also operates a like business at Bryson City.

## Offers \$500,000 for Fight



Photo shows William A. Brady, former manager of James J. Jeffries and James J. Corbett, and America's leading promoter for more than a quarter of a century, who has just offered \$500,000 for a Dempsey-Wills fight.

## Princess Ileana



This photograph, just received from Bucharest, is the latest portrait of the beautiful Princess Ileana of Rumania, who will accompany her mother, Queen Marie, on the trip to the United States this fall.

## Motor Route Connects Canada And The Gulf Of Mexico

### ENTER YOUR CAR

Urgent request is made to all who will enter their car to do so at once. Just give your name to J. B. Storey, H. D. Akin, or turn it in to The Scout.

Those who have the autocade from Murphy at heart are anxious for at least 25 cars to represent Murphy, and this is an occasion when Murphy should well be proud to display her colors. Enter your car!

Asheville, N. C., September 16.—Announcement was made today by President Roscoe A. Marvel, of the Appalachian Scenic Highway, that plans are now practically complete for forming a vast motorcade of autos from the thirteen eastern and southern states and the Province of Quebec, to assemble at Asheville for a 250 mile trip to Atlanta next month.

The pilgrimage will start from Asheville October 18th, spend the night at Gainesville, Georgia, arriving at Atlanta October 19 where a huge banquet will be served for the Governors and other important persons present for the purpose of formulating cooperative plans for popularizing the new Canada to the Gulf Highway over a route already 85 per cent hard-surfaced. It will be called the Appalachian Scenic Highway because it follows the crest of the Appalachian Mountain range in an almost southerly direction, and being the shortest route from Montreal to Florida and other Southern States.

Adolph S. Ochs, Publisher of the New York Times, accompanied by a party of friends, expects to drive from New York to Asheville over the ASH route in time to join the main autocade here. City officials and civic organizations of Asheville anticipate giving the distinguished delegates from the states and provinces north of Asheville who arrive here October 17 a banquet and entertainment.

Governor Ritchie of Maryland advises that he is appointing delegates from his state, the ASH passing through Hagerstown enroute south.

Major John S. Cohen, Publisher of the Atlanta Journal, is forming a reception committee to meet the autocade at the Georgia-Carolina line, near Murphy and escort them via Stone Mountain. Between Asheville and Murphy the autocade will pass through the boundary of the Great Smoky National Park area recently authorized by Congress.

Chambers of Commerce all along the route are cooperating in making this the greatest autocade ever operated for such a distance.

The list of entrants to date follows:

E. A. Davidson, president of the Cherokee Bank; C. W. Savage, co-proprietor of the Regal Hotel; E. C. Moore, local Dodge, Overland and Willys-Knight dealer; W. M. Fain, president W. M. Fain Wholesale Grocery Co.; J. B. Storey, cashier of the Cherokee Bank; Dr. Edw. E. Adams, practicing physician; A. B. Dickey, postmaster; G. H. Cope, lumberman; C. K. Hoover, manager Coca-Cola Bottling plant; Richard S. Parker, druggist; S. D. Akin, traveling salesman; H. B. Elliott, farmer.

## Henry Bardin Died Suddenly In Asheville

Henry C. Bardin, died suddenly Tuesday of last week in Asheville while supervising the construction of a house for a Mr. Benzing on Farrwood Avenue. Mr. Bardin was a contractor, born in Louisville, Ky., and was 70 years old.

He is survived by a wife and two children, James C. Bardin, professor of Spanish and Portuguese at the University of Virginia; and Mrs. S. Horton Christopher, of Douglas, Ga. The body was taken to Douglas, Ga., for burial.

Mr. Bardin will be remembered here as the first manager of the Regal hotel, having taken charge when it was completed. He built and operated the Wheeler Hotel of Asheville, now the Carolina Terrace. He followed the hotel business for years, and recently took up the business of builder and contractor.