

Happy Christmas

To our many friends we wish all the pleasures that a joyous Holiday Season can bring.



Messer Lumber & Supply Co.
MURPHY, N. C.

Scouting The SERVICES

WITH I CORPS IN KOREA—Inauguration of President-elect Eisenhower, the National Lumber Manufacturers Association disclosed today. This is enough to build approximately 125 average-size frame houses. Even the platform on which Mr. Eisenhower will take the oath of office, January 20, will be made of lumber.

NAVAL VOLUNTEERS—Two Cherokee County volunteers went into Naval service, one in the Waves, during the first two weeks of December, the Navy Recruiting Substation in Asheville said.

Dolores Yvonne Crisp of Route 2, Murphy, joined the Waves. Robert L. Wilson of Andrews joined the Navy.

INAUGURATION STAND

Nearly one million board feet of mixed softwood lumber is being used to build temporary stands, platforms and enclosures for the

inauguration of President-elect Eisenhower, the National Lumber Manufacturers Association disclosed today. This is enough to build approximately 125 average-size frame houses. Even the platform on which Mr. Eisenhower will take the oath of office, January 20, will be made of lumber.

NAVAL VOLUNTEERS—Two Cherokee County volunteers went into Naval service, one in the Waves, during the first two weeks of December, the Navy Recruiting Substation in Asheville said.

Dolores Yvonne Crisp of Route 2, Murphy, joined the Waves. Robert L. Wilson of Andrews joined the Navy.

Girl Scouting Grows In Area

The Nantahala Area Girl Scout Council received Dec. 9 the first two year Charter granted to it by the National Girl Scout Organization. Charters are given to Councils on the basis of volume of membership, number of volunteer leaders, number of troops, and the quality of the program provided for the girls of the Area.

Previously, Charters were issued to local groups on a twelve month basis but a new plan adopted at the organization's most recent national convention (held in Boston, Mass., late in 1951), authorized the extension of the charter period to qualified councils so that they might have the advantage of a longer planning period.

According to Mrs. Dan Moore, Girl Scouting in the Nantahala Area has grown since its first charter was granted in 1947 to a current membership of 334. Stress is being placed on such activities as camping, crafts, first aid, home-making, program building, and dramatics as part of the organization's efforts to give girls both practical and psychological skills that will help them weather the uncertainties and stresses of life in the modern world.

The new charter, signed by the national president, Mrs. Roy F. Layton is granted in the name of the Girl Scout national board of directors. It not only authorizes the Council to promote and carry on Girl Scouting in its prescribed jurisdiction, but also entitles it to have delegates to the National Council, Girl Scouts of the U. S. A., which determines the organization's policies and procedures.

Employment Office Splits First Honors

The Murphy office of the Employment Security Commission of North Carolina was one of the first to reach 100 percent in membership in the International Association of Personnel in Employment Security, North Carolina Chapter for 1953, according to the Employment Security News.

Murphy splits the honors with Mount Airy, according to the News.

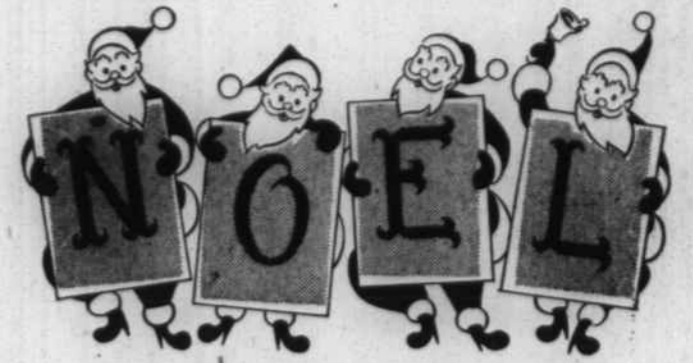
Sunny Point HD Club Holds Yule Party

The Sunny Point Home Demonstration Club held its Christmas Party during a meeting Wednesday night at the home of Mrs. E. Roach.

Mrs. Bill Roach was co-hostess. Christmas decorations were used through the house and carols were played when the guests arrived.

Dorothy Shields showed pictures and told of her experiences in the Netherlands during the past summer.

Gifts were exchanged among the 10 members and four visitors attending. Refreshments of coffee, cake and candy were served.



We've lined up to extend to you our sincerest Season's Greetings. May the bountiful joy that we wish you for Christmas be followed by an equal measure of happiness in the New Year.

Pack—Farmers Garage

Phone 668-J—Murphy, N. C.

A Joyous Christmas

At this time of the year, all hearts are in tune with the spirit of the Season. We wish a Joyous Holiday to all.



NEW REGAL HOTEL
Murphy, N. C.

Liquid Fertilizer Gets Slow Approval In Area

In spite of reported increased use of liquid fertilizer, Cherokee County farmers are not taking to the liquid in large numbers.

G. H. Farley, County Farm Agent, said that three demonstrations on application were conducted last season and more are planned in the season to come.

Mr. Farley attributed the county's slowness to use liquid fertilizer to two causes: the extreme newness of the idea here, and the fact that TVA nitrogen is available to the county at a reduced cost.

However, Mr. Farley said, results of the demonstrations looked favorable and he believes more farmers will use liquid fertilizer in the seasons to come.

Liquid fertilizer is applied in various ways including seed treatment of small grain crops, as a transplanting solvent, as a side dressing and by spraying directly on the leaves of a growing crop. This last method is known as leaf feeding.

In most applications, the liquid fertilizer is applied to the plants rather than to the soil. Scientific tests prove that plants can absorb up to 90 per cent of the nutrient

sprayed on their leaves and that these nutrients are carried quickly throughout the plant structure.

Ease of application, convenience in storing and handling, and the ability to get a "free ride" along with applications of water-soluble weed killers are some of the advantages reported by growers.

Farmers are familiar with single-purpose sprays such as nitrogen. The availability and use of balanced solutions containing all important major elements in a 1-2-1 ratio plus powerful trace elements known to be essential to plant growth and productivity is now winning wide-spread recognition among America's growers, according to "NaChurs" Plant Food Company.

VISITS DAUGHTER

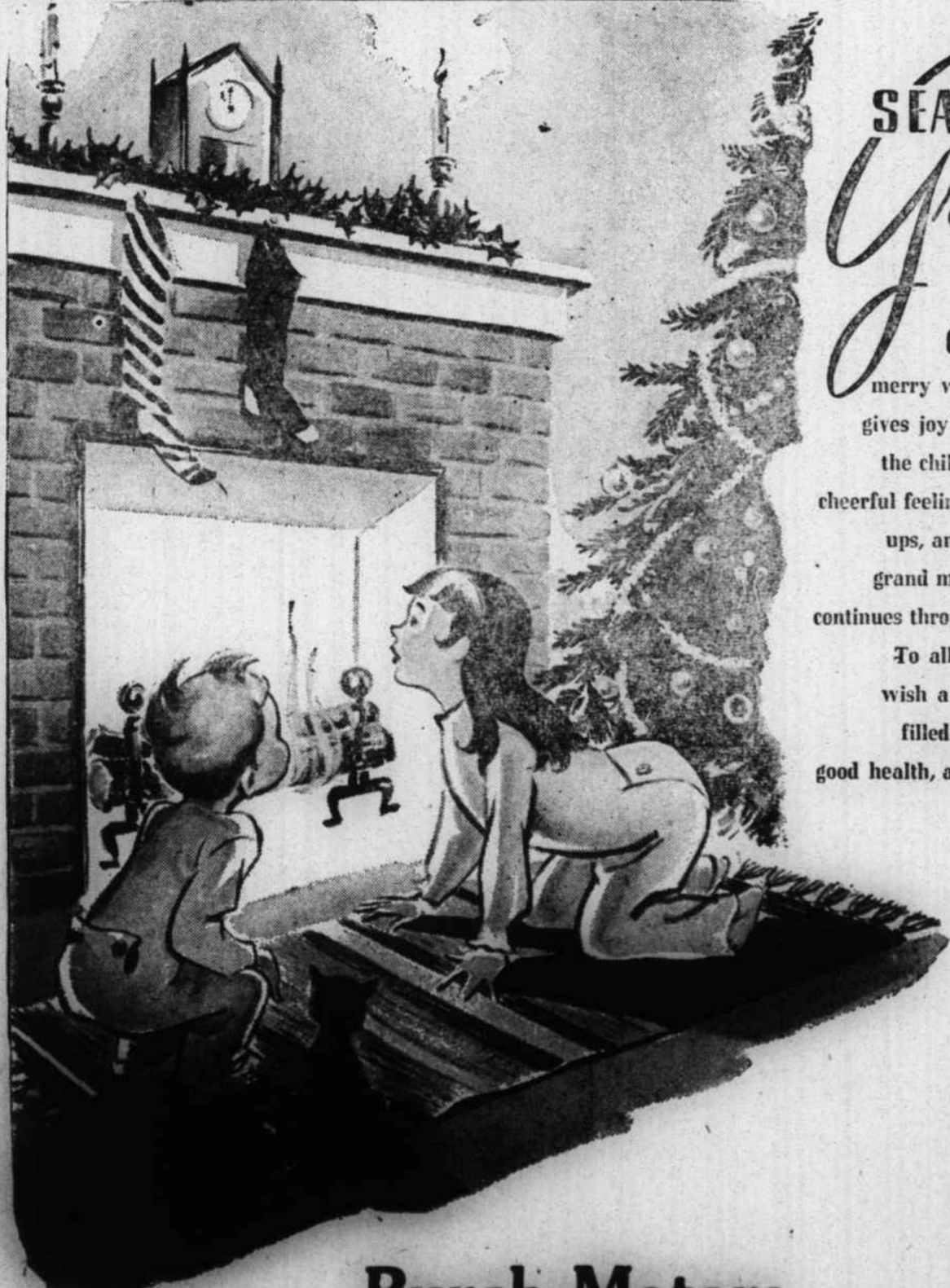
Mrs. Leon Gresh, of Boyertown, Pa. spent a week visiting her daughter, Mrs. Herbert Sheidy and family in Andrews. She returned to her home Sunday.

Mrs. Mary Sheidy, also of Boyertown, Pa., mother of Mr. Herbert Sheidy, has come to Andrews to make her home with her son and family.

SEASON'S Greetings

Christmas has a merry way with all... it gives joy and laughter to the children, warm and cheerful feelings to the grown-ups, and best of all the grand memory of its joy continues throughout the year.

To all our friends we wish a Holiday Season filled with happiness, good health, and contentment.



Burch Motors
"Your Friendly Ford Dealer"

Phone 95

Murphy, N. C.

Christmas Blessings



Wherever the spirit of Christmas remains, there we find that peace and brotherly love can never be forced from the hearts of men.

A joyous Christmas and a bountiful New Year to all!

PEOPLE'S CAFE

Tenn. St.

Murphy, N. C.

MERRY Christmas

Because Christmas time is reserved for very special greetings—we want to take this opportunity to thank our many patrons for their continued friendship and good-will. . . and add, too, in a great big measure—our sincere wishes that the spirit of the season may remain a lasting joy for you and yours throughout the coming New Year.

Stiles Produce Co.
Tenn. St.
Murphy, N. C.