

NOTICE OF SERVICE OF PROCESS BY PUBLICATION STATE OF NORTH CAROLINA COUNTY OF CHEROKEE IN THE SUPERIOR COURT CHEROKEE COUNTY.

CLIFFORD MURPHY, and wife, NELLIE MURPHY,

DEFENDANTS.
TO CLIFFORD MURPHY TAKE NOTICE THAT: A pleading seeking relief against you has been filed in the above entitled action.

The nature of the relief being sought is as follows:

The foreclosure of the lien of Cherokee County taxes against real estate located in Beaverdam Township, Cherokee County, North Carolina, and the condemnation of said lands to sale to satisfy said taxes, tax liens, interest and costs of this action and to foreclose and foreclose all of your right, title and interest to the same.

You are required to make defense to such pleading not later than Friday, the 14 day of May, 1954, and upon your failure so to do the party seeking service against you will apply to the Court for the relief sought.

This the 20 day of March, 1954.
J. L. HALL,
Clerk of the Superior Court.

Miss Marr Receives Nurse's Cap At Berea
BEREA, KY.—Miss Mary Margaret Marr, daughter of Mr. J. F. Marr, Sr., of Andrews, N. C., was

Mrs. Wallace Feted At Shower Here
LAST WEEK

Mrs. J. H. Wallace, the former Jimmie Davis, was honored Friday night Mar. 5, at a stork shower by Mrs. Merle Davis, Mrs. Boyd Davis, Mrs. Kenneth Davis and Mrs. J. B. Hall, at the home of the former.

Following games and the opening of gifts a desert course and coffee were served. Guests included Mrs. W. H. McKeever, Mrs. W. V. Costello, Mrs. J. L. Baugh, Mrs. John W. Davidson, Mrs. Cole, Mrs. Ralh Adams, Mrs. Howard McDonald, Mrs. Arden Davis, mother of the honoree, Mrs. Roy V. Lovinood, Mrs. Loren Davis and Mrs. Joe Hamilton.

awarded her "cap" after completing the first six month training period at the Berea College School of Nursing recently.

LAND SURVEYING

MINERAL STUDIES

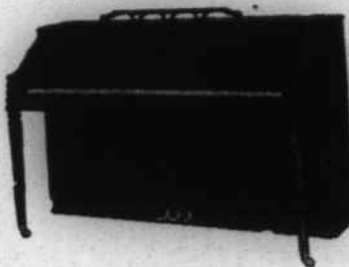
Bailey and Van Horn
Box 221, Murphy, N. C.

Phones 578-J or 578-W

Continued from page 2
Beginning corner, containing 45 acres more or less. For further description see Deed into Hickey from B. F. Burgess, et al, in Deed Book 41 at page 146, reference to which is hereby made.

This the 17 day of March, 1954.
H. L. McKEEVER,
Commissioner

PIANOS IN ABUNDANCE \$150 Up



Benches \$9.95 & Up
Pianos Since 1895
BELL PIANO CO.
Murphy, N. C.
Phone 183

New, roomier bodies! New, rugged construction!



New Chevrolet Trucks... do more work per day... more work per dollar!

You save extra trips. That's because of the extra load space you get in the new Advance-Design bodies. New pick-up bodies are deeper, new stake and platform bodies are wider and longer. Also, they're set lower for easier loading.

You save hours on the road. Thanks to new high-compression power, you can maintain faster schedules without driving at higher maximum speeds. Increased acceleration and hill-climbing ability let you save time where it counts.

You save time on deliveries. With new truck Hydra-Matic trans-

mission, you save time at every delivery stop. And you can forget about clutching and shifting for good! It's optional at extra cost on 1/2-, 3/4- and 1-ton Chevrolet trucks.

You save on operating costs. New power saves you money every mile! The "Thriftmaster 235" engine, the "Loadmaster 235" and the "Jobmaster 261" (optional on 2-ton models at extra cost) deliver increased operating economy.

You save with lower upkeep, too. Extra chassis strength saves you money on maintenance. There are heavier axle shafts in two-ton

models... bigger clutches in light- and heavy-duty models... stronger frames in all models.

And your savings start the day you buy. In fact, they start with the low price you pay and continue over the miles. Chevrolet is America's lowest-priced line of trucks. It's also the truck that has a traditionally higher trade-in value.

Come in and see all the wonderful new things you get in America's number one truck. We'll be glad to give you all the money-saving facts.



MOST TRUSTWORTHY TRUCKS ON ANY JOB!—Chevrolet Advance-Design Trucks

Dickey Chevrolet-Oldsmobile Co.

PHONE 60

MURPHY, N. C.

SUPER SAVINGS!



Ann Page Top Quality—Creamy

SALAD DRESSING

Pt. Jar 29c Qt. Jar 49c

Packers Label

ORANGE JUICE 2 -48 oz. can 43c

Economical—Nourishing Dried

PINTO BEANS 2-lb. pkg. 25c

Ann Page Pure

Grape Jelly
12-oz. Jar 17c

PERFECT STRIKE—A&P'S BRAND—CHUM
SALMON 1-lb. can 33c

A&P Light Meat

TUNA FISH

7-oz. can 33c

A&P Seedless
RAISINS 15-oz. pkg. 15c

COLD STREAM—A&P'S BRAND—PINK
SALMON 1-lb can 41c

Jane Parker Bakery Special of the Week! Large Ring

ANGEL FOOD 1 lg. ring 49c

Easy To Prepare—Fine Flavor—Dried Baby

LIMA BEANS 2 lb. pkg. 23c

SWIFT'S ALL MEAT PREMIUM

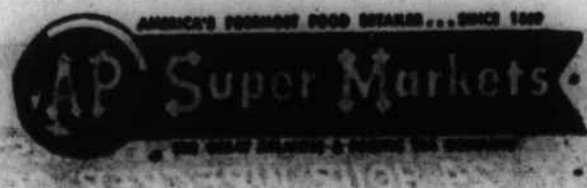
FRANKS
1-lb. pkg. 49c

Nice Tender Ears
YELLOW CORN
4 ears 25c

Lay's Pure Pork
SAUSAGE
1-lb. 53c

Filled With Juice, Florida
GRAPEFRUIT
8 lb. bag 29c

111 PEACHTREE ST.
MURPHY, N. C.
MAIN ST.
ANDREWS, N. C.



Divining Rod... Southern Style!

THE HIGHBROW NAME for this scientific water locating device is "Earth Resistivity Instrument." But to our industrial geologist and his men in the field it's just plain "Megger"—the divining rod with a college education.

Using the "Megger" and other modern equipment, our water-location team is charting areas along the Southern where heavy supplies of *underground* water for industrial use may be found; the anticipated yield and the quality.

An unusual way to railroad? Not at all—for factual information of this kind is vitally important to many industries considering a location in the South. And by making it readily available to them; we are helping the territory we serve to grow and prosper.

This is another of the little-known but important ways in which the Southern "serves the South."

Harry A. Orsatti
President

SOUTHERN RAILWAY SYSTEM

WASHINGTON, D. C.

