

GARDEN TIME

BY ROBERT SCHMIDT

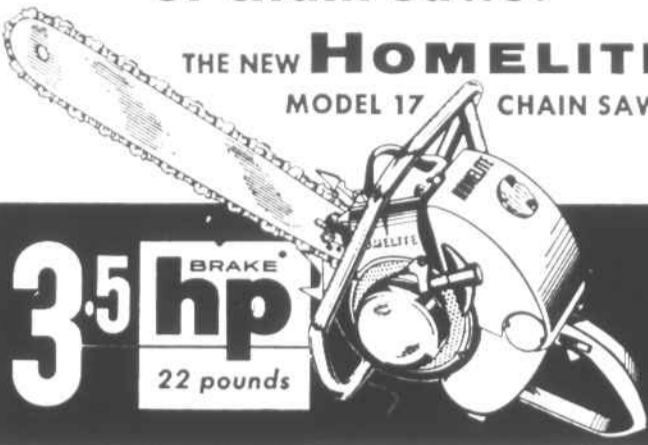
In a few days those dahlias that you left in the ground over winter will send up sprouts. They should be dug up, divided and replanted. If they are not taken up and divided they will send up several stalks which will give you a nice early bloom but the fall flowers will usually be inferior. In dividing dahlia clumps be sure that each division has at least one root and one good eye or sprout. There is no advantage in having more than that. If you look up the dahlia clumps last fall and put them in storage you will find that they are beginning to show well-developed eyes or sprouts and can be easily divided now. After dividing keep them covered with slightly damp peate moss or sawdust so that they will not dry out until it is time to plant. In the central portion of the state a good planting date is May 1 to 15, in eastern areas a few days later would be best and in the mountains early May would be about right.

ATHLETES FOOT GERM HOW TO KILL IT IN ONE HOUR

If not pleased, your 40¢ back. This STRONG fungicide SLOUGHS OFF the outer skin to expose buried fungi. Kills it on contact. Get Greaseless, Instant-drying T-4-L at any drug store. Today at Mauney Drug Store.

It's the MIGHTY MITE of chain saws!

THE NEW HOMELITE MODEL 17 CHAIN SAW



3.5hp BRAKE 22 pounds

*Actual Dynamometer Rated Horsepower

A real lightweight saw with amazing power

Cuts an 18 inch tree in 18 seconds... cuts trees 4 feet or more in diameter... and it weighs only 22 pounds complete. No other saw so light and so easy to handle gives you so much productive, dependable power. Try it on any wood-cutting operation... cutting timber, pulpwood, cordwood, fence posts, hedgerows, orchards... you'll agree that here is the saw for you.



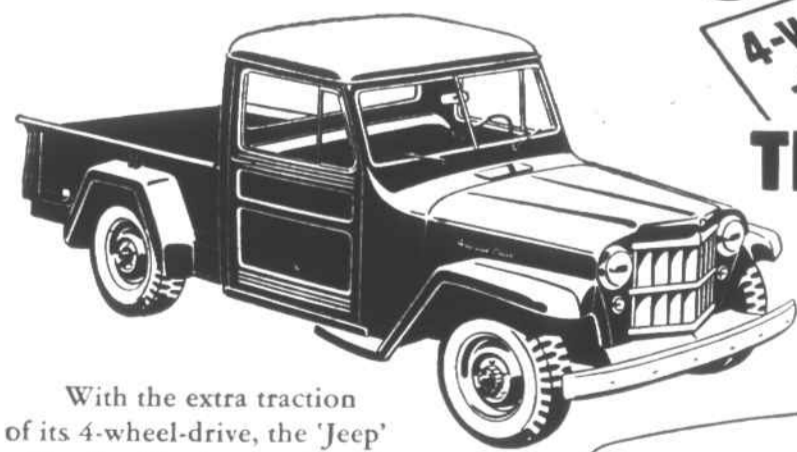
An all purpose, all angle saw. Does notching, felling, limbing, bucking, boring and under-cutting. Operates in any position... even upside down.

- * New & Used Outboard Motors
- * We Service Outboard Motors
- * We Service All Types Lawn Mowers
- * If it's a Small Engine - We Fix it.

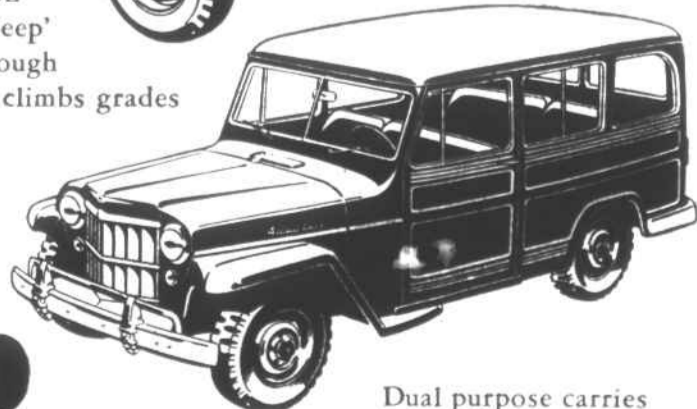
Radford & Reynolds Chain Saw Co.

NEW LOCATION - Next To Stiles Produce on Tennessee St

GET THROUGH MUD AND MUCK WHEN OTHERS FAIL 'Jeep'



With the extra traction of its 4-wheel-drive, the 'Jeep' Truck will take you through spring mud and muck. It climbs grades up to 60% fully loaded.



Jeep

4-WHEEL-DRIVE STATION WAGON

MADE BY WILLYS—WORLD'S LARGEST MAKER OF 4-WHEEL-DRIVE UTILITY VEHICLES

FRANKLIN MOTOR CO.

Andrews Rd.

Murphy, N. C.

EASTER EGG HUNT

Mrs. L. B. Nichols and Mrs. Herbert Steady will entertain the children of the Andrews Presbyterian Sunday school Thursday afternoon today with an Easter Egg hunt and winter roast at the home of Mrs. Steady.

The affair, which is sponsored by the Presbyterian Women of the church, will begin at 3:30 p. m.

Dahlias grow well in any type of soil as long as it is well drained. If the soil is not well drained you may lose many plants after periods of heavy rainfall. On the other hand, it is necessary to keep dahlias well watered during extended periods of hot, dry weather.

Dahlia roots may be purchased now at seed stores or from certified dahlia nurseries. A few good ones are Cherokee Brave (red), well-tried, large-flowered variety; Edna D. (red); Jersey's Beauty (pink); D-Day (pink); Kirsten Flaxstad (orange); California Pageant (orange); Jan Gowl (buff); Edgar Guest (yellow); All-grease (yellow); Chamouni (purple); The Red Glory (white); 5-Star General (cream pink); and Jean Trimber (purple).

Good small-flowered varieties are Baby Royal, Fairy, Fuchsia Gem, Red Charm, White-Fawn, Audrey Orange, Little Lemon Drop and Sylvia.

A few good pompon varieties are Sherry Snowball, Morning Mist, Little Edith, Yellow Gem and Little Marvel.

IN THE SUPERIOR COURT NOTICE OF SALE

NORTH CAROLINA, CHEROKEE COUNTY, WADE H. COLLINS, Plaintiff

SARAH ANN HAMPTON, Et Al, Defendant

Under and by virtue of an execution directed to the undersigned Sheriff from the Superior Court of Cherokee County, in the above entitled action, and in pursuance of the writ of said Court directing a sale of said property under said execution upon the 14th day of April, 1955, at 12 o'clock noon, for sale to the highest bidder for cash, there will be offered for sale to the highest bidder for cash, upon the opening bid of \$155.00, all right title and interest which the Defendant, Sarah Ann Hampton, now has or at any time at or after the making of the judgment in said action had, in and to the following described real estate lying and being in Hothouse Township, Cherokee County, North Carolina, more particularly described as follows:

DON'T SCRATCH THAT ITCH

In 15 minutes, you MUST be pleased with ITCH-ME-NOT when applied for the itch of eczema, ringworm, athlete's foot, insect bites and other surface rashes or your 40¢ back at any drug store. Today at Parker's Drug Store.

There Is Strength for YOU

in the Belief in LIFE AFTER DEATH



Made in the image of God, we shall live forever with God.

"Love can never lose its own."



BRISTOL WITH NANTAHALA POWER

Edwin F. Bristol has accepted work with the Nantahala Power and Light Company at Nantahala and entered upon his new work April 1.

ADMINISTRATORS NOTICE

The undersigned, having qualified as Administratrix of the estate of John H. Rogers, Deceased, late of Cherokee County, North Carolina, this is to notify all persons who have claims against the said estate to present them to the undersigned on or before the 21st day of April, 1955 or this notice will be pleaded in bar of their recovery.

All persons indebted to said estate will please make prompt payment to the undersigned at her home in Andrews, N. C.

This 12th day of March, 1955. SALLY P. ROGERS, Administratrix of John H. Rogers, Deceased.

Cherokee County, North Carolina, more particularly described as follows: BEGINNING on a Dogwood at the head of Potato Creek and runs South 25 west 981 feet to a Chestnut Oak on top of the ridge; then first West and then in a Northwest direction with the meanders of said ridge 1744 feet to an Iron Post corner of Number Two, allotted to Robert Cross; then South 85 East with the line of Parcel No. Two 1140 feet to an Iron Post and small Maple on the bank of Potato Creek; then up with said Creek in a Southeast direction 410 feet to the Beginning, containing 23 acres, more or less.

This 26th day of March, 1955. Claude M. Anderson, Sheriff.

Mr. Bristol for a number of years operated the Texaco Service Station on Main Street in Andrews.

PERSONALIZE YOUR WATCH

Let us refinish dial and have your name put on the dial of the watch you are now wearing. It only costs from \$3.00 to \$5.00.

E. C. MOORE JEWELERS Phone 592 Murphy, N. C.

CATHOLIC SEED CORN

THE DEATH OF JESUS All who believe in Christ are firmly convinced that His death is the most important death in all history of man. And so it is. Yet we must not make the mistake of leaving the death of Jesus in the past as the greatest action ever accomplished.

NO THE DEATH OF JESUS MUST LIVE. The death of Jesus must be present in our lives and not just a thing of the past. It is the wish of Jesus that His death should live. And His death will live if we die to ourselves.

Paul tells us: "We who have been baptized into Jesus have been baptized into His death." (Romans 6) And he says further on, that as Jesus rose from the dead we also must walk in the newness of life. It is so easy to say that we believe in Christ. It is easy to say we follow Him.

BUT WE DON'T UNLESS WE DIE WITH HIM. We cannot live with Him and follow Him unless we die with Him. Some people just don't see this. They fail to see that if the death of Christ is to be of any value to them, they too, must die. It is not just a matter of believing in the death of Jesus. But it is, as Paul said, a matter of DYING WITH HIM. For only then can we live. There are some who think they can lead the life they want, as long as Christ died for all our sins.

Yet they are the ones who make a mockery of the death of Christ. They are the ones who laugh in the face of the Justice of God. And they will pay a steep price for their mockery and laughter at God.

From the day Christ died, all men who would follow Christ must die... die to self. WE MUST DIE BY DOING GOD'S WISHES, AND NOT OUR OWN. We die by not being selfish, by not thirsting for the riches of this world. We kill the "old man" by not seeking unlawful pleasures of the body.

We die to self by being patient, by eating and drinking with reason. We die by wishing others well and by working to bring others to the truth of Christ. ONLY IF WE DIE WITH CHRIST, CAN WE LIVE WITH CHRIST.

God bless you now. Rev. Joseph Dean Murphy's Catholic Chapel

...they're here!... '55 Evinrude



Whispering power... Smooth as sailing!

The future's just arrived... in family boating fun! Come in and see the revolutionary new 1955 Evinrude... now with quiet, vibrationless WHISPERING POWER in 4 great models!

So quiet you can listen to the rippling bow wave above the motor's hum! Quiet and without trace of vibration... even at wide open planing speeds!

Come in and see for yourself what the future holds in store!



Elliott Hardware Co. Phone 241 Andrews, N. C.

Miss Huffman Goes On Tour With Club Miss Virginia Huffman, fresh man at Broadard College and member of the College Glee Club, will go on tour with the Glee Club next week to a number of towns where they will present programs. Miss Huffman is a graduate of Andrews High School.

Take Command... get the thrill first hand!



DRIVE THE NEW DODGE TODAY!

SEE YOUR DEPENDABLE DODGE DEALER!

E. C. MOORE, Murphy, N. C.



BOB POOLE, popular radio star of WBIG says, "My wife has always used light Karo for cooking... and on the table—it's

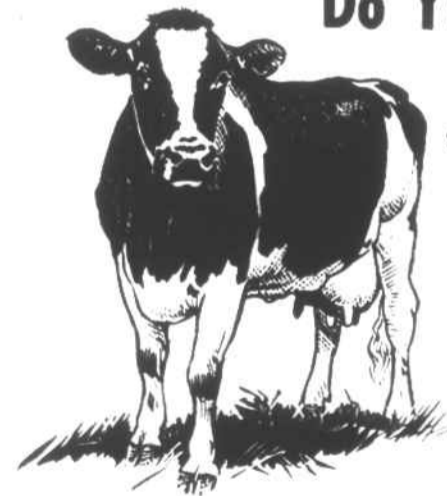
dark Karo for me, the best-tasting eating syrup of 'em all"



Yes, indeed... biscuits go like hot cakes when you pour on plenty of delicious dark Karo... there's nothing like it for good eating. Satisfying flavor. So rich it stands right up on top of biscuits (keeps 'em light and fluffy). Keep Karo on your table morning, noon and night... it tops anything!

HERD PROFIT

Do Your Heifers GIVE



'105 to '150 worth of milk before average heifers freshen?

THEY SHOULD!

The average heifer in this country freshens at about 28 to 30 months of age. Purina Program raised heifers freshen at 24. Figuring 3,000 lbs. of extra milk for these four to six months at .03 1/2¢ a lb. is \$105. At 5¢ a lb. it is \$150. Can you afford this loss?

Heifers can be grown big enough to make good money above feed cost in their first lactation. At the Purina Research Farm, 14 grade Holstein heifers raised on the Purina Program averaged just 24 months when they calved. They were fully developed... weighed an average of 1244 lbs. each. They averaged 10,691 lbs. of milk and 404.5 lbs. of fat in their 10-month lactations.

Improper feeding simply holds back body development. Purina D & F Chow fed on the Purina Heifer Program helps grow heifers to breeding weight fast, helps develop strong, sturdy calves, conditions heifers to produce all the milk that's bred into them during the first lactation.



Ask us to help you get "extra milk" given by early-freshening, big heifers grown on the Purina Program.

STILES PRODUCE CO.

FEED Phone 143

SEEDS

FERTILIZER We Delivery