

Hiwassee Dam PTA Meets Tues., May 17
 The Hiwassee Dam PTA will hold its May meeting on Tuesday, May 17, instead of the regular date on Thursday. The meet will be at 7:30 p. m. in the school auditorium. The Rev. W. L. Cook will give the devotional and new officers will be installed.

The glee club will sing two numbers and next year's principal, Harest King, will speak.

The Girl Scouts of Troop 16 will hold an investiture ceremony at the meeting after which Future Homemakers will sell refreshments.

Young Harris College Choir To Sing In Andrews



The Young Harris College Choir, above, under the direction of Bill Fox will present a program of Sacred Music at the First Methodist Church, Andrews, Sunday night. The public is invited to attend.

The Young Harris College choir will present a program of sacred music at the First Methodist Church, Andrews, at 7:30 p. m. Sunday, May 15.

The choir, composed of some 25 girls' and 15 boys' voices is directed by Bill Fox. Mr. Fox attended high school at Blairsville, Ga., and did his college work at Young Harris and at Georgia State Teachers College.

Victor Morris is the accompanist for the group. He is a graduate of Manhattan School of Music and studied at Florida State University and the University of Michigan. The public is invited.



MURPHY DRIVE-IN THEATRE
 MURPHY, N. C.

Thurs.-Fri., May 12-13

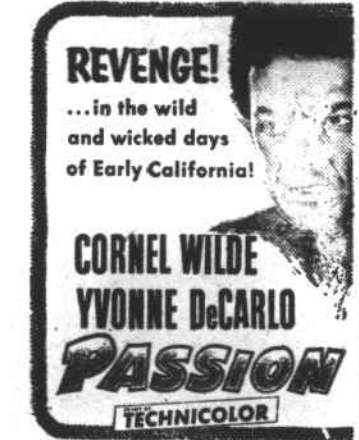


Sat., May 14



STARRING RORY CALHOUN - COLLEEN MILLER
 GEORGE NADER - WALTER BRENNAN
 NINA FUCH - JOHN McINTIRE
THEATRE

A UNIVERSAL-INTERNATIONAL PICTURE
 Sun.-Mon., May 15-16



Tues.-Wed., May 17-18



Hist. Society, Toastmasters Sponsor Speaking Contest

The Cherokee County Historical Society, in cooperation with the Toastmasters Club, will sponsor a declamation contest on Friday, May 20, at 1:15 p. m. in the school auditorium.

The following boys, and their speeches, will be on the program:

"Speech in the Virginia Convention", Hubert Sneed.

"Inaugural Address of President Thomas Jefferson", Jack Fleming.

"I Am an American", Burke Moore.

"The Five Necessities for a Successful Life", Fred Van Horn.

"The Deathbed of Benedict Arnold", Garry McClure.

"Abraham Lincoln Delivers His Second Inaugural Address", Tommy Howse.

"By the Tomb of Napoleon", Charles Smith.

"An Appeal to Arms", McKinley Johnson.

"A Plea for the Abolition of Capital Punishment", Harry Mattox.

"Robert Edward Lee", E. G. Gaddis.

"The Difference Between a Lie and the Truth", Harry Killian.

"Winston Churchill's Address Before U. S. Congress", Steve Hembree.

Those who are coaching the boys are Jack Dickey, Dr. A. J. Headrick, Rev. Joseph Dean, W. C. Lawson, Harry Bishop, Bob Bault, Arnold Beerkens, Charles Johnson, Rev. Asmond Maxwell, Frank Forsyth, P. B. Henn, John Gill, J. H. Duncan, Kiffen Craven, R. G. Rhodes, Rev. Rhett Y. Winters, Jr., Marion Ennis, Joe E. Ray, Harvey Hinshaw, L. L. Mason, Dr. George Size, Don Ellis, C. K. Olson, Wayne Holland.

Reunion Held At P. A. Mauney

A reunion was held at the home of P. A. Mauney Sunday, May 1.

Persons present were Mrs. W. A. Banner of Asheville; Mr. and Mrs. J. B. Stevens and granddaughter, Becky Sue, Mrs. Dora Henry, Mrs. Bess Savage of Atlanta, Ga. and Mrs. Elizabeth Ann Stiles of Knoxville, Tenn.

Also Mr. and Mrs. G. W. Radcliffe and son, Brent, Mr. and Mrs. Paschal Hughes and children, Clara, Jackie and David, Mr. and Mrs. Fred Sneed and children, Marcella, Freddie, Jr. and Glenn, Mr. and Mrs. Claude Sneed, Mrs. C. B. Hedrick and children, Jimmy and Joan.

Mr. Mauney and his three sisters, Mrs. Sneed, Mrs. Henry and Mrs. Savage had not been together in several years.

Dinner was served at noon after which the group gathered in the living room and sang some gospel songs with Miss Clara Hughes at the piano.

Girls Scout Troop Re-Organized At HD

Hiwassee Dam Girl Scout Troop 16 has been reorganized under Marion Wilson and Glenna Lewis, leaders.

The troop committee is made up of Mr. and Mrs. Arthur Payne, Alma Gaddis, Stacy Gibson and Sadie Dominick.

The 11 girls officially registered in the troop are Eula Mae Allen, Margaret Brendle, Nancy Dockery, Carol Lee Dominick, Loraine Eller, Ruth Ann Graham, Nancy Hawkins, Willa Sue Payne, Jeanette Reid, Mary Carol Roper, and Minnie Kay Worley.

Gwen Lewis is an addition to the official list and others are expected since other girls are already eligible and five more will be when they attend the next meeting.

Some 12 or more girls will be invested as Girl Scouts and receive their pins and the rank of tenderfoot at the May PTA meeting at the school.



Wed.-Thur. May 11-12
The Far Country
 James Stewart in color



Fri.-Sat., May 13-14
The Raid
 In color Van Heflin



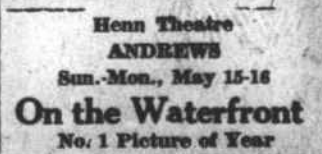
Sun.-Mon., May 15-16
Conquest of Space
 In Color



Tues., May 17
Black Tuesday



Thur.-Fri., May 12-13
GONE WITH THE WIND
 CLARK GABLE - VIVIEN LEIGH - LESLIE HOWARD
 OLIVIA DE HAVILLAND
 A UNIVERSAL INTERNATIONAL PICTURE
TECHNICOLOR



Sat., May 14
Untamed Frontier
 Joseph Cotton in color



Sun.-Mon., May 15-16
Gypsy Colt
 In Color

Join the millions of thrifty shoppers who sing the praises of **A&P's Scores of May Savings!**

- AP** These Prices Will Be Effective Through Saturday, May 14th.
- Strietmann **Zesta Crackers** 1-Lb. Pkg. 25c
 - Blue Label **Karo Syrup** - - Pt. Bot. 23c
 - Burns' Tasty Fresh **Vanilla Wafers** 8-Oz. Pkg. 19c
 - Ann Page Pure Ground **Black Pepper** - 2-Oz. Can 15c
 - A&P Fancy **Seedless Raisins** 15-Oz. Pkg. 17c
 - A&P Fancy **Sweet Potatoes** 18-Oz. Can 20c
 - SAIL** * A&P's Own Detergent Giant Pkg. 49c
 - Heinz Hot Dog Relish - - 11-Oz. Jar 29c
 - Daily Brand Dog Food 3 1-Lb. Cans 25c
 - Regal's Spanish Peanuts 8-Oz. Pkg. 19c
 - A&P Cranefruit Juice 2 6-Oz. Cans 39c
 - Nutley Brand-In Quarters **MARGARINE** 2 1-Lb. Pkgs. 35c
 - Sultana with Pork **BLACK EYE PEAS** 2 15 1/4-Oz. Cans 23c
 - Ann Page Sparkle **SHERBET MIX** 3 Pkgs. 25c

SAVE PLENTY ON A&P'S "SUPER-RIGHT" MEATS

Heavy Western Grain Fed Beef - Porterhouse or Sirloin

STEAKS - - Per Lb. 89c

Heavy Western Grain Fed Beef - Sirloin

STEAKS - - Per Lb. 85c

Heavy Western Grain Fed Beef - Chuck Blade Pot

ROAST - - - Per Lb. 39c

Morrell's Pride - Hot or Mild Pure

PORK SAUSAGE - - - 1-Lb. Roll 29c

Wilson's Corn King

SLICED BACON - - - 1-Lb. Pkg. 43c

Premium All Meat

SWIFT'S FRANKS - - 1-Lb. Pkg. 45c

Morrell's Pride - 12 to 14 lb. average-Short Shank Skinned

SMOKED HAMS Half or Whole Per Lb. 53c

- Ivory Soap** 2 Lge. Bars 27c
- Ivory Soap** 3 Reg. Bars 25c
- Personal Size **Ivory Soap** 4 Med. Bars 21c
- Ivory Flakes** Lge. Pkg. 30c
- Ivory Snow** Lge. Pkg. 30c
- Camay Soap** 3 Reg. Bars 25c
- Camay Soap** Bath Bar 12c

SWANSON'S FROZEN PIES

BEEF • TURKEY • CHICKEN

8-Oz. Pkg. **23c**

Swanson's Frozen T.V. DINNERS 11-Oz. Pkg. 79c

Spanish Bar Jane Parker Each 29c

Dinner Rolls Jane Parker 2 Pkg. 25c

Blueberry Pie Jane Parker Ea 35c

White Pie Jane Parker 1-Lb. Enriched 20c

Raisin Bread Jane Parker 1-Lb. 20c

JANE PARKER STRAWBERRY PIES Big 8-In. Pie 49c

Fruits & Vegetables

Large Marsh Seedless **GRAPEFRUIT** 8 Lb. Bog 41c

Golden Corn - 4 Ears 19c

Juicy Lemons - Lb. 15c

Winesap Apples 12 17c

Cajeta Stalks 10c

Cajeta 10c

Lettuce 2 heads 25c

Juicy Florida Oranges, 1 Lb. 19c

Firm Slicing TOMATOES Ctn. or Bulk Lb. 23c

La Choy Chinese Foods

- La Choy Chop Suey 1-Lb. Can 30c
- VEGETABLES 1-Lb. Can 30c
- La Choy Meatless CHOP SUEY 1-Lb. Can 33c
- CHOW MEIN NOODLES 2-Oz. Can 17c
- LA CHOY BEAN SPROUTS 1-Lb. Can 15c
- LA CHOY BROWN SAUCE 1-Oz. Bot. 19c

Scotch Maid Frozen Foods

- Cut Broccoli-Peas & Carrot 2 Pkgs. 29c
- Chopped or Leaf Spinach Extra Fancy Green Peas 2 Pkgs. 35c
- Fordhook Lima Beans, Baby Green Lima Beans 2 Pkgs. 35c
- Cut Green Beans French Style Beans 2 Pkgs. 33c

Strawberries Southland Frozen 2 10-Oz. Cans 45c

Sliced Peaches Sealbrook Farms 12-Oz. Pkg. 19c

Orange Juice P&W Frozen 2 6-Oz. Cans 25c

Grape Juice Welch's Frozen 6-Oz. Can 23c

Mild and Mellow Coffee

Eight O'Clock 1-Lb. Bag 79c

EVAP. MILK 3 Tall Cans 35c

A&P Fancy Sliced BEETS - 2 16-Oz. Cans 25c

Reliable Cut Green BEANS - 5 1/4-Oz. Can 15c

A&P Fancy SPINACH - No. 2 1/2 Cans 19c

Packers Label Red Sour Pie CHERRIES 2 Cans 45c

Iona Sliced PEACHES 16-Oz. Cans 25c

BURCH MOTORS

SEE BURCH FIRST

24 HOUR WRECKER SERVICE

TENNESSEE ST. • PHONE 95 • MURPHY, N. C.

- 1937 FORD
- 1938 FORD Pickup
- 1938 DODGE Pk.
- 1938 FORD 3 Dr.
- 1938 FORD TURBO
- 1947 CHEVROLET 3 Dr.
- 1948 FORD Coupe
- 1948 FORD, 77, 3 Dr.
- 1948 FORD 3 Dr.

Duz Lge. Pkg. 30c Qt. Pkg. 72c

Oxydol Lge. Pkg. 30c

Quick Elastic 2-Oz. Pkg. 12c

Quick Starch Qt. Bot. 25c