

Mrs. Palmer Dies At Marble Tues.

Mrs. Emma McRae Palmer, 77, of Marble, died at 1 p. m. Tuesday in an Andrews Hospital after a short illness.

Funeral services were held Wednesday at 2:30 p. m. in Marble Baptist Church. The Rev. A. B. Lovell officiated and burial was in Tomolia Cemetery.

She is survived by two daughters, Mrs. M. L. Passmore of Rock Hill, S. C. and Mrs. J. C. Passmore of Franklin; one son, Leonard Palmer of Marble; two sisters, Mrs. Martha Smith of Milledgeville, Ga. and Miss Hattie McRae of Murphy; charge of arrangements.

MARTIN IN GERMANY
Airman First Class Max Martin, son of W. R. Martin, Suit, recently was graduated from the Seventh Army Non-Commissioned Officer Academy in Munich, Germany.

An instrument technician assigned to the 1603d Support Squadron, he successfully completed a five-week course in leadership, map-reading and other military sub-

jects. Airman Martin entered the Air Force in July 1951 and completed basic training at Lackland Air Force Base, Texas.

The 23-year-old airman attended two brothers, John McRae of Robbinsville, Robert McRae of Murphy; 17 grandchildren and 19 great-grandchildren.

New Free Methodist Church Dedicated At Epworth, Ga.



Strawberry Harvest Outlook Is Reduced

North Carolina's 1955 strawberry crop will be reduced by about 75,000 crates from last year's harvest.

T. T. Hatten, horticulture specialist for the State College Agricultural Extension Service, says the freeze killed almost all small buds, blooms and small fruit that had set when the big cold came.

Berries are now being harvested but the season will be short. The Crop Reporting Service estimates that the prospect is for 40 crates an acre, compared to 85 crates last year. The reduction in yield is coupled with a slight acreage decrease. This adds up to a total estimated production of 60,000 crates. Last year the state's strawberry growers produced 135,000.

jects. Airman Martin entered the Air Force in July 1951 and completed basic training at Lackland Air Force Base, Texas.

The 23-year-old airman attended

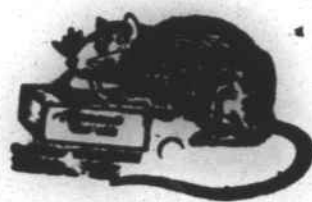
The new Free Methodist Church, above was recently erected at Epworth, and dedicated by the superintendent of the Georgia-Carolina Conference, the Rev. A. V. McClellan.

The Rev. G. H. Guisler of Murphy, as pastor, assisted by the Rev. Ruby Kephart, formerly of Murphy, who did much to formulate the organization of the new church.

The Free Methodist Church is an organization started in 1860, continuing in the spirit of Evangelical Methodism, the Rev. Mr. Guisler said.

CAROLINA'S Rat BAIT

Contains Wafarin — The new killer of all species of rats and mice.)



One pound package

only 75c

A GUARANTEED PRODUCT

Available At Farmers Federation

WHY Mr. WORLDLYWISE DEPOSITS HIS SAVINGS IN THE BANK



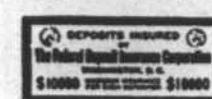
"Like everyone else, I need ready cash — some money I can draw on for an emergency or opportunity."



"I don't want to leave this money lying around the house — I want to put it where I know it will be protected night and day."



"I'm not ready to make an investment, but I would like this money to earn some interest while I'm waiting to use it."



"As an extra safeguard I want these funds to be insured by the Federal Deposit Insurance Corporation at no extra cost to me."



"And I want to know that where I deposit my money I can also apply for a loan, or use other helpful bank services I need."



"And so, because only a bank account will give me all of these benefits, I'm now saving part of every dollar every pay day at my bank."

THERE IS NO SUBSTITUTE FOR MONEY IN THE BANK

As a depositor of ours, your money is safeguarded by sound management; carefully protected by laws, regulations and examinations; insured by the Federal Deposit Insurance Corporation up to \$10,000 for each depositor.

Here, you have access to a wide variety of banking services — all centralized under one roof for your convenience. We cordially invite you to save time and steps by doing all your banking business here with us.

Citizens Bank & Trust Co.

Murphy—Andrews—Robbinsville

Hayesville

Serving Southwestern North Carolina

Member Federal Deposit Insurance Corporation

Resources Over Six and a Half Million Dollars

WHITE... priced right



Or less
22.95
plus tax
Size 6.70 x 15

for new, sparkling bright

WHITE SIDEWALL

by **GOODYEAR**

- Sparkling beauty to match the elegance of any car.
- Famous Goodyear quality construction throughout.
- Big trade-in allowance on your old tires.

Get new Goodyear White Sidewalls — the smartest tires you can put on your car — at an economical price AND we'll pay you today's top dollar for the tires you trade in! So why wait — get your new Goodyear White Sidewalls at today's low prices AND a liberal deal for your present tires.

YOUR OLD TIRES MAY MAKE THE DOWN PAYMENT!

ALLISON & DUNCAN
TIRE COMPANY

Phone 225

Murphy, N. C.

In the low-price 3 PLYMOUTH GIVES YOU MORE high-price-car features THAN THE OTHER 2 CARS combined!

HIGH-PRICE-CAR FEATURES				HIGH-PRICE-CAR FEATURES			
	Low-price Plymouth	Low-price Car A	Low-price Car B		Low-price Plymouth	Low-price Car A	Low-price Car B
1 Electric windshield wipers, that operate at a constant speed.	YES	NO*	NO	7 Baked enamel exterior finish, with special rustproofing undercoat.	YES	NO	YES
2 Independent parking brake, for greater safety in emergencies.	YES	NO	NO	8 Full-time Power Steering, that operates 100% of the time (optional).	YES	NO	NO
3 Overflow shock absorbers, that have twice as much cushioning action.	YES	NO	NO	9 Oilite fuel filter, that keeps water out of fuel line.	YES	NO	NO
4 Bonded brake linings, which last up to 50% longer than riveted linings.	YES	YES	NO	10 Resistor-type spark plugs, that last up to 5 times as long as other types.	YES	NO	NO
5 Safety-Firm Wheels, help hold a deflated tire on rim in case of a blowout.	YES	NO	NO	11 Oil-bath air cleaner, to protect engine from abrasive dust and dirt.	YES	NO*	NO*
6 High-level air intake, which can be closed when not in use.	YES	NO	NO	12 Automatic choke, built into the carburetor for quick, easy starts.	YES	YES	NO
PLYMOUTH HAS FAR MORE HIGH-PRICE-CAR FEATURES THAN THE OTHER TWO COMBINED!				12	2	1	

* optional at extra cost

A glance at this chart will show you how far Plymouth leads other low-price cars in value as it does in performance.

When you see and drive a new Plymouth, you'll be surprised how much like a high-price car it is — in everything except the low figure on its price tag. And don't be

fooled by the claims of medium-price cars that they cost "practically the same" as Plymouth. You'll find that, model for model, Plymouth costs as much as \$500 less, and gives you more car for your money!

Why not get the whole story of Plymouth's value today?

BEST BUY NEW; BETTER TRADE-IN, TOO

YOUR PLYMOUTH DEALER

E. C. MOORE

187 Valley River Ave.

Murphy, N. C.