

### Lightning Is Split Second Electrocution

Being in the path of an earth-to-sky spark—that is, "struck by lightning"—means split-second electrocution. In a summer storm, don't lift a metal-shafted golf club or seek shelter under a tall tree, for they make ideal electrical pathways.

A ditch, ravine or cave is preferable to a solitary hut on a hilltop. A car gives good shielding to occupants. Don't stay in the water or near a metal fence.

There is an old but apt quotation: "If you heard the thunder, the lightning had not strike you. If you saw the lightning, it missed you; and if it did strike you, you would not have known it."

### WATCH THAT HIPPO

The hippopotamus of the Upper Nile River, often thought of as a harmless, amiable creature, can attack without apparent provocation, says the National Geographic Society.

### Navy Calls For Reserve Volunteers

The Navy Recruiting Station in Raleigh said today that requests for active duty are desired from Naval Reservists. Volunteers in over 60 ratings in various pay grades are needed to fill vacancies in fleet and shore duty billets. Tours of active duty may be for two, three, or four years. Volunteers will have their choice of fleet assignments, the Recruiting Station said. In addition, they may state a preference for the type command within the fleet of their choice—such choice to be given every consideration.

Also, the Recruiting Station stated, Reservists volunteering now for active duty may, if otherwise qualified, be guaranteed a trade school under the High School Training Program. This program provides for specialized training in one of more than 40 schools. Interested Reservists may get more information from their local Naval Reserve Training Center or the nearest Navy Recruiting Station.

### Broiler Prices Show Increase

Broiler prices ranged from 10 to 15 per cent higher from May 1 to July, 1955, than for a similar period last year, according to C. P. L. Beau, extension poultry and egg marketing specialist at State College.

One of the factors responsible for this three cents per pound increase is that processors have expanded their market territory to new areas, especially to the mid-west and New England and new customers have helped to relieve the pressure of sellers to take customers away from each other by cutting prices.

A wide range of broilers with different weights have been offered buyers. Some customers prefer 2½ pound broilers, some want three pound birds, and others like 3½ pound weights. Producers, feed dealers, and processors are doing a better job of satisfying consumer preference.

Other factors are: cool weather up to July helped broilers acquire a finer finish and higher quality that catches the eye of housewives; more retailers are carrying broilers through the entire week rather than just weekend specials; more processor confidence and control over the volume and age at which broilers are marketed; and shoppers have a little more money to spend than last year because of wage increases and population growth.

Will the added strength in broiler prices continue? Libeau says it depends on organization, control and knowledge of the sellers and

### SMALLEST TRIBE

Grand Canyon National Park encloses the home of the Havasupais, possibly the smallest and certainly the most isolated Indian reservation in the United States, says the National Geographic Society. A few square miles in a side canyon support the tribe of some 300 members.

buyers of broilers from the farm to the consumer. A change whereby the buyers have an advantage over the sellers could shift pressure for lower prices. Competition among states could induce this shift.

### MAKES FERTILIZER

Lightning combines nitrogen and oxygen in the air into priceless fertilizer for the soil. Rain washes it

down. An estimated 100 million tons of usable plant food is thus produced each year, far more than all the fertilizer man makes.

### CATHOLIC SEED CORN

What Do Catholics fear throughout the world?

Catholic people do not fear persecution, because that can only crown the Church with the glory of martyrdom. They do not fear heresies which only bid the Church to display more clearly the treasures of sacred doctrine. They fear but one thing—ignorance of the truth.

There are many people who would like to learn all about the Catholic Church, but hesitate to make inquiries. If you want to investigate the Catholic faith in the privacy of your own home, send a postcard asking for the Free Home Instruction Course. You will receive a book explaining Catholic belief and worship, written in an easy—to-understand way. There are six test sheets which you may or may not want to use.

No one will call on you unless you request it. If you wish to ask any questions which puzzle you, you can have them answered by mail without cost or obligation to you.

God love you now.

Rev. Joseph Dean

....Murphy's Catholic Chapel

### Announcing July 18th Opening

OF

J & C BEDSPREAD CO. RETAIL SHOP

Ellijay, Ga.

Gate No. 4

Seconds & Closeouts of  
Bedspreads, Rugs, Carpets, and Remnants

OPEN ONLY 2 to 5 P. M.

MONDAY THROUGH FRIDAY

### FOR ATHLETES FOOT

Use T-4-L for 3 to 5 days. Watch the old tainted skin slough off leaving healthy, hairy skin. If not pleased with powerful, instant-drying T-4-L, your 40c back at any drug store. Today at Mauney Drug Store.

### GARDEN TIME

BY ROBERT SCHMIDT

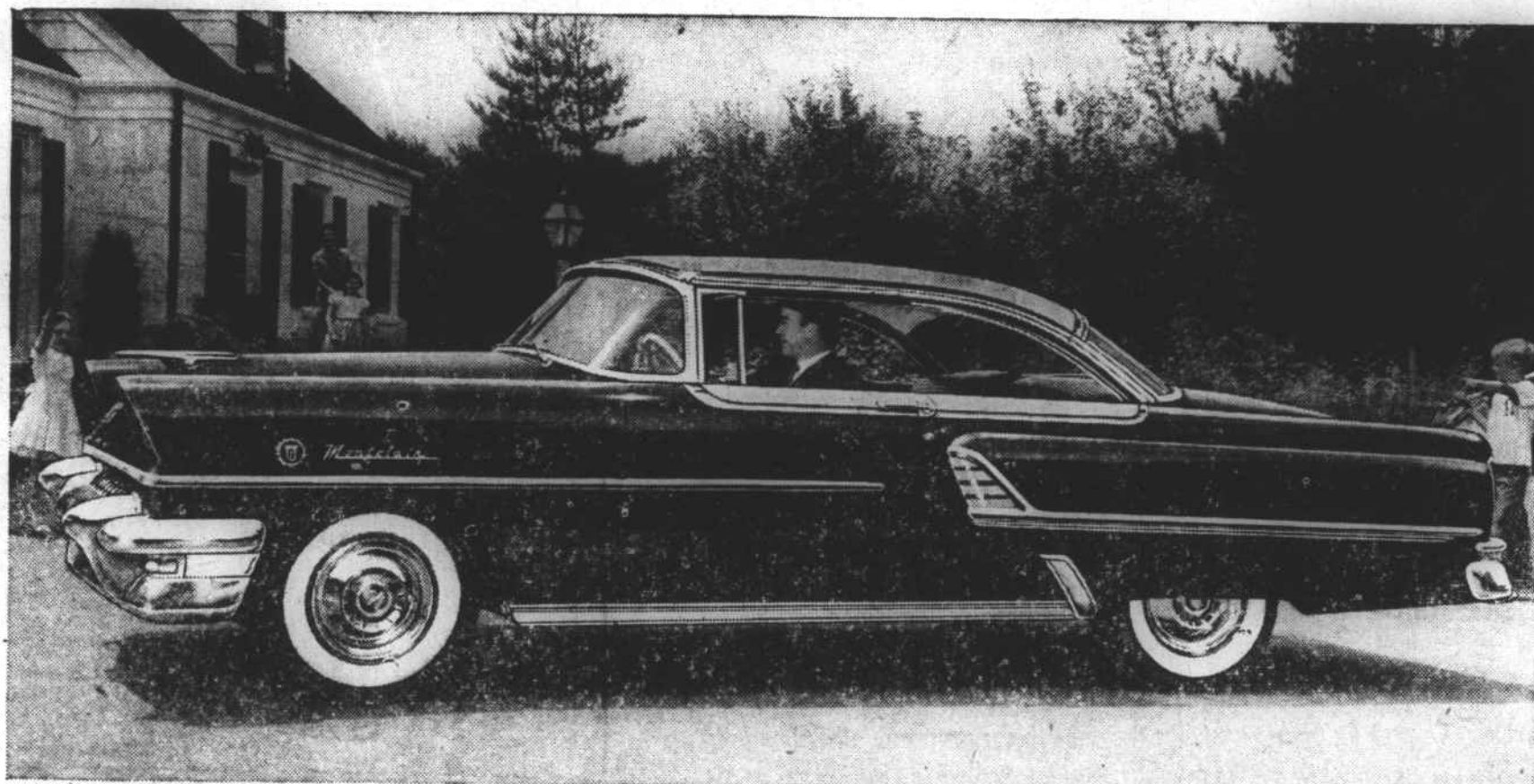
At this time of the year we usually have a lot of complaints that tomatoes are rotting on the lower side or blossom end of the fruit. This condition occurs on small green fruits as well as on fruits almost ripe. This is not an organic disease but rather a physiological condition known as blossom-end rot. It appears to be caused or at least aggravated by extremes in weather conditions—either by periods of dry weather it can be held in check by providing irrigation; however, don't wait until you have lost a large percentage of your tomatoes, but irrigate as soon as lack of sufficient moisture is evident. Mulching plants with a deep layer of straw will prevent loss of moisture from the soil and will cut down on the amount of blossom-end rot.

In the mountain area it will be necessary to control late blight if you wish to be successful with tomatoes. This is the same disease that attacks Irish potatoes. Use a copper spray such as tribasic copper sulphate or Copper A compound and keep the plants well covered.

Don't forget to prepare for a good fall garden. If you have not already done so, sow seed as soon as possible for broccoli, cauliflower, collard and cabbage plants. These may be grown in flats or boxes for transplanting to pots or tin cans for later transplanting to the field. Broccoli and cauliflower require more boron than is found in most of our soils which deficiency causes hollow stems and an internal browning. To prevent this, mix two level tablespoonsful of common borax with the fertilizer for 100 feet of row.

Three good fall garden crops are Chinese cabbage, kohlrabi and leaf lettuce. These crops are not found commonly enough in our fall gardens. Head lettuce does not do as well in the fall as leaf lettuce. A good variety is "Salad Bowl".

# Mercury beauty, power and resale value boost sales to record high...



And record sales mean record deals. Cut your cash outlay by acting now—get a far bigger allowance for your present car.

It's worth a trip to our showroom just to hear the figures! For it's never been easier than right now to own a Mercury.

**HIGH-VOLUME DEAL**—Mercury's record-breaking popularity now permits us to operate on a much higher-volume basis. We can offer the best deals in our history. And, remember, a Mercury deal means far more than just a low price. Look at what you get:

**EXCLUSIVE STYLING**—No "look-alike" styling for Mercury. You get fresh, distinctive beauty—styling shared by no other car.

**SUPER-TORQUE POWER**—You get more than just high horsepower (188 and 198 hp)—you get far more usable power. More power is put to work in pickup and passing speed ranges—where you can

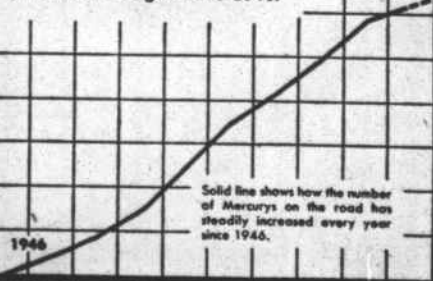
use it for everyday driving, not just for high speeds.

**EXTRA-VALUE FEATURES**—Only Mercury in its field offers you so many important extras at no extra cost. For example, a 4-barrel carburetor on all models. Special 18mm anti-fouling spark plugs. Ball-joint front suspension. And dual exhausts on all Montclair and Montereys, and Custom Station Wagons.

**CONSISTENTLY HIGHEST RESALE VALUE**—Mercury protects your investment better than any other car in its field. Independent reports show that Mercury consistently returns more of the original purchase price at trade-in time. In short, no other car offers you bigger reasons for buying it. And you couldn't pick a better time to get a deal on a new Mercury. So why wait? See us today.

### THE BIG MOVE IS TO MERCURY

Mercury is setting new sales records every month. More than 2,000,000 Mercurys have been bought since 1946.



IT PAYS TO OWN A

# MERCURY

—FOR FUTURE STYLING, SUPER POWER

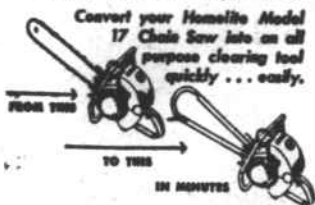
## Evans Auto Co.

VALLEY RIVER AVENUE



### See the New HOMELITE CLEARING ATTACHMENT

- Does the work of a gang of men with saws and axes.
- Fells, bucks and limbs all small trees and saplings.
- Eliminates bending and stooping. No pinching or binding.
- Fast, light and trouble free in operation.
- Pays for itself in a day or two.



SEEING IS BELIEVING  
Come in and ask for a free demonstration  
GOOD USED CHAIN SAWS \$50 UP

Radford Homelite Service  
Murphy, N. C.

You'll like the Special Flavor in



— it goes a long way toward making any meal better!



Fill Your Cup With Rich, Smooth Coffee Flavor

THE VALUABLE COUPON ON EVERY BAG CAN HELP YOU SAVE MONEY ON HOUSEHOLD ITEMS. Write for completely illustrated catalog showing many valuable household articles. JFG Coffee Co., Knoxville.