

THURSDAY, SEPT. 29, 1955

THE CHEROKEE SCOUT, MURPHY, NORTH CAROLINA

PAGE SEVEN

"RIVER OF NO RETURN"  
Valley Drive-In Theatre  
Sun.-Mon., Oct. 2-3

**NOT AS A STRANGER**

OLGA DE HAVILLAN  
ROBERT MITCHELL  
FRANK SMITH  
GLORIA GRAHAM  
BROOKS CRAWFORD - CHARLES BICKFORD

DICKEY THEATRE  
Sun.-Thurs., Oct. 2 - 6

### THE TEEN SCENE

By ANN MAYNOR and JUDY SNEED

**FOOTBALL PARTY**  
BECKY RHODES and LINDA ENGLISH gave a wonderful party Friday night after the Bethel-Murphy football game. Some of the girls spent the night after party. Games were played and refreshments were served and the group danced. Everyone enjoyed the party immensely.

Those attending were: ANN PARKER, JUDY SNEED, STEVE

CRAWFORD, ROY STILES, SAMMY WHITE, ANN MAYNOR, TOMMY GENTRY, ANNETTE WHITE, TOMMY MOORE, JIM HENDRIX, JOHN MORRIS, LAURA BAILEY, BURT BURCHFIELD, PATTY WORTHEM, JACK FLEMING, BETTY GARRETT, H. C. BUECK, BARBARA GRIFFITH, ED GIBBS, LAVERN HINTON, IDA BRUMBY, JIMMY MCCOMBS, JOAN SCHMITT, HOYT ZIMMERMAN, RAMONA HAGGARD, NORRIS WEST, JIM KILPATRICK, ANN ELLIOTT, GLORIA BOWMAN, GORDON BATES, JUDY COOK, BETTY WEAVER, CAROL ROBB, LINDA ENGLISH and BECKY RHODES. Mr. and Mrs. Ralph Rhodes were chaperones.

Also there JOE BRYANT, BOBBY SCHEMPT, JOE SWAIN, JIMMY MASSEY, BOBBY MORRIS, RONNIE BRITAIN, and BILL BROWNING.

**GAME CHANGED**  
The Murphy-Robbinsville football game, Friday night Sept. 30 will be at Andrews ball park, due to the Cardinal in the Murphy ball park. We expect to see as many as tending the game, as if it were being played in Murphy, The Juniors will be in charge of the concession stand.

**SENIOR OFFICERS**  
The Senior Class of 55-56 met for the first time this year for the purpose of electing officers and selecting committees for the coming year.

The following officers were elected: President, Clark Anderson; Vice-President, Bill Hughes; Secretary, Jackie Wilson; Treasurer, Hubert Sneed; Reporter, Junior Mills; Chairman (over-all) Ida Brumby.

The only committees chosen so far are the Homecoming and Finance. Members of the Homecoming are: Anne Elliott, Patsy Jones, chairman; Kathryn Amos, Mary Ruth Donley, Charlie Mills, Harry Arrowood and Mary Lespcier. Finance is: June Crawford, Nancy Sales, chairman, Steve Cook and Virginia Fowler.

**BOOMERANG!**  
The first issue of Boomerang (the Murphy High School newspaper) came out Tuesday of this week under the new staff headed by IDA BRUMBY as editor in chief.

Others on the staff are: MARY LEPCIER and PATSY JONES, assistant editors; NANCY SALES, LARA HUGHES, feature editors; ANN MAYNOR, MARY DONLEY, news editors; H. C. BUECK, exchange editor; IMOGENE VOYLES, business manager.

Typists, JOAN SCHMITT, POLLY STILES, MARCELLA SNEED, FRANCES STILES; circulation managers, BILL HUGHES, BOBBY HEMBREE; and reporters, JUDY COOKE, JOAN TABOR, KATHRYN AMOS, HELEN COOK

JOAN HANEY, ANNIE MURPHY, ANNE ELLIOTT, JUDY SNEED and BETTY WEAVER. Miss Maria Travis is the sponsor.

H. C. Bueck, Ida Brumby, Patsy Jones and Mary Lespcier, accompanied by Miss Travis, will attend the school editor's roundtable at Kanuhaheta (school annual) have been submitted in competition with those of other schools in this area. Copies of the Boomerang and the

Dependable Service When You Need It Courtesy Townson Funeral Home



Fall Home Repair Supplies

**DO-IT-YOURSELF...**  
and measure your SAVINGS!

Extra item of the month

**6 FT. STEEL RULE**  
Easy to use—inside and outside measure. Graduated in 16ths. Compact steel case.

\$1.00

**PORTABLE SAW** \$48.50  
Finest saw for home workshop. Converts to table saw, sander, shaper. With economy lift.

**PUSH DRILL** \$4.95  
Quick, easy drilling. Steel chuck—8 drill points—1/16" to 1/4".

**ONE PIECE HAMMER** \$4.35  
New type, balanced hammer. No wads, joints or pins. Non-slip grip. It's "unbreakable."

**Hand Saw** \$3.65  
High-carbon steel with proper tooth set. Balanced—with shaped grip. Rip or crosscut.

**LIQUID GAS TORCH** \$6.95  
Makes home or shop repairs a snap. For paint burning or soldering. Lights instantly.

Your Handy Helpful Hardware Man suggests:  
**HOW TO MAKE A CALIPER**

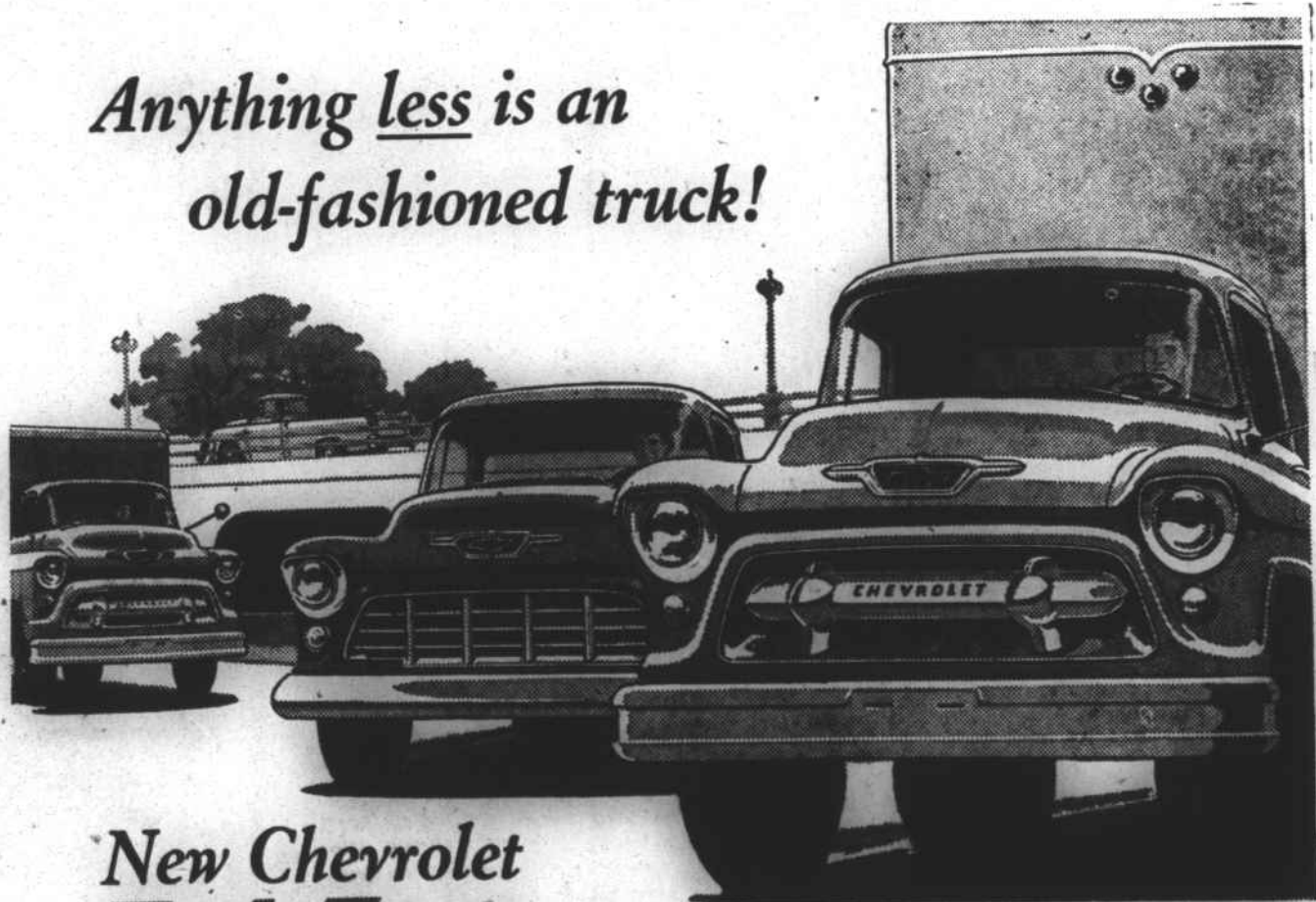
A folding rule, once broken, is generally considered useless and simply thrown out of the home workshop. However, here is a handy compensating caliper, useful for taking both inside and outside rough measurements, made from just such a broken folding rule. Two 6-in. sections are easily cut to the shape shown in the sketch by cutting on a jigsaw or by filing. Fine sandpaper can be used to smooth off any remaining rough edges.

ASK ABOUT OUR NEW BUDGET PLAN for all your purchases!

**Budget Plan**

**Murphy Hardware Co.**  
Phone 25 Murphy, N. C.

Anything less is an old-fashioned truck!



### New Chevrolet Task-Force Trucks

Most modern trucks on the road! If you don't get all the advantages they offer, you stand to lose money on the job today... and again at trade-in time!

Most modern power—V8 or 6  
In most new Chevrolet truck models, you have your choice of V8\* or 6. Chevrolet's new truck V8's have the shortest stroke of any V8 in any leading truck! That means less fric-

tion and wear per mile. And all Chevrolet truck engines have a modern 12-volt electrical system for quicker starting, better ignition and a greater electrical reserve.

The truck driver's "dream cab"  
With wide panoramic windshield, concealed Safety Step and High-Level ventilation system.

Work Styling—a Chevrolet exclusive  
Two fresh, functional styling treatments—one for light- and medium-

Chevrolet Truck Work Styling is well illustrated in these four models ranging from the Low Cab Forward and Comeo Carrier at left to the pickup and tractor-trailer unit at right.

duty models, another for heavy-duty. Your Chevrolet truck will do your job better—and look better!

Most modern features throughout  
Advanced suspensions! More rigid, ladder-type frames! Tubeless tires standard on 1/2-ton models! Come in and see all the ways you're way ahead with new Chevrolet trucks!

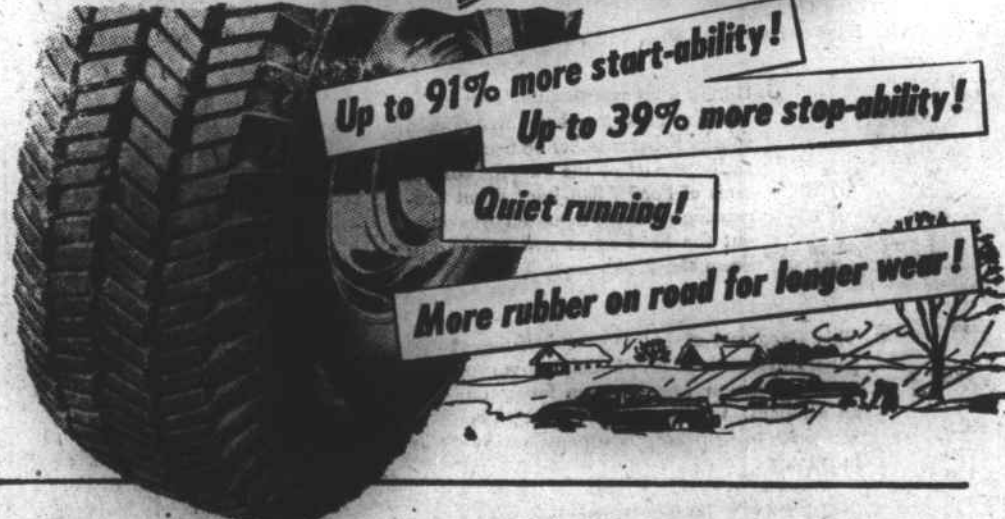
\*V8 standard in L.C.F. models, an extra-cost option in all others except Forward Control models.

Year after year, America's best selling truck!



**Dickey Chevrolet-Olds. Co.**  
Phone 60 Tennessee St.

Get the BEST Winter Tire  
**SUBURBANITE**  
by **GOOD YEAR**



**TRUCKERS! Get the new GRIP TRED**  
The same great design and performance as the Suburbanite, but built to truck specifications.

AVAILABLE IN SIZES UP TO 7.50 x 17

by **GOOD YEAR**

**ALLISON & DUNCAN**  
TIRE COMPANY

Phone 148

Murphy, N. C.