

**Spruce-Up Is Universal Impulse**

Along with "the flowers that bloom in the spring" comes the almost universal (and well high irresistible) urge for the homeowner to clean-up spruce-up, make

various improvements in his home and grounds.

The most effective programs of this kind are those that are well planned in advance, with a careful eye to what is needed, most urgently, and of course, with due reference to what the budget will afford. Such planning should start with

**Breakfast in Rome, Lunch in Jerusalem**



Israel Govt. Tourist Office Photo

A FLIGHT OF ONLY 4½ HOURS from Rome brought this American tourist couple to a new world in Israel. They had breakfast in Rome, lunch in Jerusalem, and now you see them in the Crusader town of Acre, watching an aged Israeli at his ancient method of weaving. It is one of the fascinations of Israel that tourists can see craftsmen in the street make exotic jewelry, rugs, baskets and copper souvenirs with skills that date back to the days of the Bible. According to the Israel Government Tourist Office, increasing numbers of Americans are extending their trip to Europe with a visit to Israel. This year, Israel expects 100,000 tourists to help celebrate the Golden Jubilee of modern Tel Aviv.

Adv.

an outside-and-inside and floor-by-floor survey of the home, for the purpose of appraising all present and future needs and possibilities.

In making such a survey, the following check-list may prove helpful to the homeowner.

**Outside the House**

The grounds: would some judiciously placed shrubs, trees or flower beds or borders enhance the appearance of your property? How about a flagstone walk? Or a patio, perhaps, with a barbecue, for outdoor relaxing and entertaining? How does your lawn shape up? Does it need touching up? Or should it perhaps be completely rebuilt?

The House: Is it long over-due for a repaint job? How about the roof? Is it still weather tight? What about the guttering and downspouts? Are they still functioning properly or are repairs or replacements indicated?

Does your chimney need repointing? And what about the siding of your house? Is it still sound and attractive? or would a complete "face lifting" job add value to your property for beyond the cost of the improvement.

**Inside the House**

Redecoration: Is it time for a change of scene in any or all of your rooms via paint or wallpaper? It is amazing how a comparatively small amount invested in paint or wall paper can make a room "wake up and sing."

Lighting: Study the present lighting in every room in your home. Is it adequate? Does it set off your furniture and furnishings to the best advantage? It is estimated that 80% of all American homes are inadequate lighted, which certainly points up the importance of giving this subject careful attention.

The attic: It is the usual clutteration of odds and ends? Could it be converted, at relatively small cost into an extra bedroom or hobby area? Could storage cabinets be built under the eaves?

Bathroom: How about modernizing it with new fixtures, new wall tile or flooring? Or does your family really need an extra bathroom or lavatory, and is there space available for the purpose?

Kitchen: Does it leave much to be desired on the score of efficiency or appearance or both? Check it for needed cabinets, flooring, appliances, redecoration.

Basement: Does the foundation need waterproofing? How about built-in storage facilities to hide those unsightly pipes? Should waste space in this area be panelled off to create an attractive family rumpus room?

**Landscaping Is "Showcase" Of The Home**

What do neighbors think of the appearance of your home property? Is it pleasing from the street? Do people, in passing, think "I'd like to live there?"

Often the answer to this question is to be found in the character of the landscaping, which in effect provides the "showcase" of the home. Sometimes the planting of a single tree or a few shrubs can change the whole aspect. A flowering tree or shrubs, well placed, or evergreens that keep their green all year add "life" to the property.

Test the "curbside" rating of your home by standing on the side walk and asking yourself the following questions as suggested by the American Association of Nurserymen:

1. Is the home blended naturally into the landscape, presenting a pleasing aspect from the curb, both winter and summer?
2. Is the foundation of the home bare, or well-planted?
3. Are the foundation plantings overgrown and scrawny obscuring windows? Do they need pruning, or would be better to replant entirely with more tasteful plants?
4. Are there color and variety from the use of shrubs or trees with different foliage and flower textures and forms?
5. Does the property as seen from curb "hall" the various seasons of the year?

If the answers to the above questions are in the negative, then it is time to call in your nurseryman for suggestions.

In some residential areas a walk along the street in the spring-time is a delight to the eye with shrubs of various species aglow with different or even the same flowers on separate properties.

In summer and fall, as well as in winter, attractive plant contrasts can be shown. In winter, the dark green of coniferous and broadleaved evergreens are distinctive and beautiful against the snow. They add "life" to the property during the dormant season. For fall, various foliage colors (reds and yellows) will give the property a hospitable golden glow. Summer flowering trees and shrubs can add to the beauty of the property in the warmer months.

Daily demand for water in the United States is estimated at 200 billion gallons. In the next 25 years this demand is expected to double.

**You can bank on HIGH QUALITY**



**CPA SEEDS**

Yes sir . . . for regular planting or Soil Bank use you will find only the highest quality seeds when you buy CPA certified seeds.

Lespedezas . . . Kobe, Korean and Sericea.

Clovers of all kinds . . . Also grass seeds.

All types of high quality legume and grass seeds available. Drop by today!

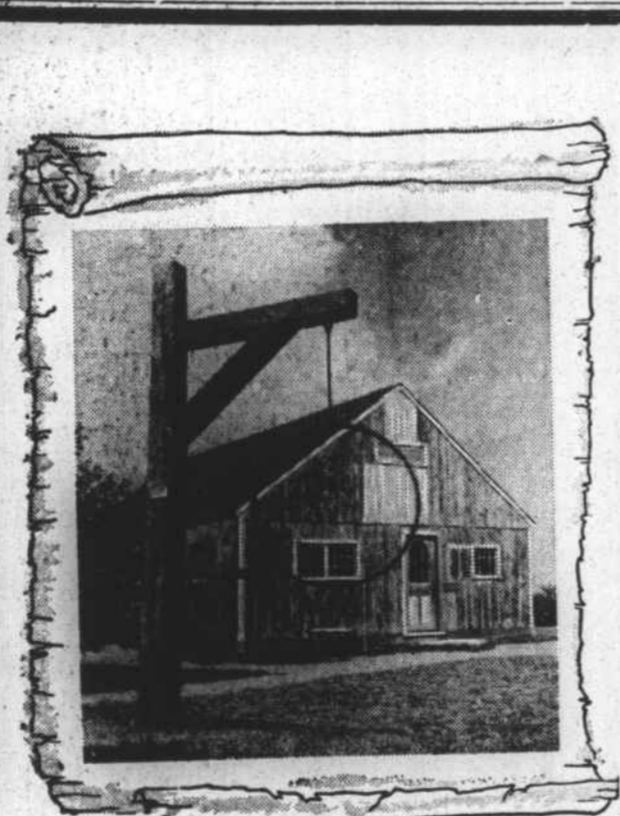


**Farmers Mutual Exchange, Inc.**

Feed - Seed - Fertilizer - Farm Supplies  
BLAIRSVILLE, GEORGIA

Sam Graham Mitchell Stephens  
Analysis

2-12-12 Warehouse . . . . .	\$38.00 Ton
4-12-12 Warehouse . . . . .	\$40.00 Ton
Am. Nitrate-Warehouse . . . . .	\$80.00 Ton
Nitrate of Soda-Warehouse . . . . .	\$65.50 Ton
14-6-14 Warehouse . . . . .	\$60.00 Ton
0-14-14 Warehouse . . . . .	\$38.00 Ton



**It was used to bring help fast**

When fire broke out in the village of yesteryear, someone would bang on this iron ring to get help in a hurry. Today, when FINANCIAL emergencies arise, a visit to this bank is the best way to get the most effective help fastest. For a low-cost loan to meet your needs, consult with us.

**CITIZENS BANK and TRUST CO.**

Murphy - Andrews - Robbinsville

Hayesville

SERVING SOUTHWESTERN NORTH CAROLINA

Member Federal Deposit Insurance Corporation

**SPECIAL SALE!**  
MILD AND MELLOW  
**EIGHT O'CLOCK COFFEE**  
1-LB. BAG  
**55¢**  
Economy 3-lb. Bag \$1.59

- Ann Page Specially Priced Fresh  
**Mayonnaise** Qt. Jar **49¢**  
Ann Page Pineapple or Peach  
**Preserves** 2 Lb. Jar **49¢**  
Jane Parker Large Size Pies  
**Blackberry** Ea. **39¢**  
Jane Parker Gold or Marble 2-Cut  
**Pound Cake** Ea. **49¢**  
**Glazed Donuts** Jane Parker Pkg. of 12 **35¢** Pkg. of 8 **27¢**

AMERICA'S DEPENDABLE FOOD MERCHANT

**A&P**  
**100<sup>th</sup> BIRTHDAY Celebration**  
1859-1959

Zest Soap 2 Bath Bars **41¢**  
Zest Soap 2 Reg. Bars **29¢**  
Duz Soap Lg. Pkg. **35¢**  
Blue Dot Duz Lg. Pkg. **35¢** Gt. Pkg. **83¢**  
Oxydol Lg. Pkg. **35¢**  
Giant Size 80c Spic & Span Lg. Pkg. **29¢**  
Cascade 20-Oz. Pkg. **43¢**  
Detergent Dash Large Package **39¢**  
Household Cleanser Comet 2 Reg. Ctns. **31¢**  
Glim Liquid Detergent 15-Oz. Can **40¢**

**Shop Regularly And See . . . You're Money Ahead At Your A&P!**

White Vegetable Shortening CRISCO 3-Lb. Can	91c	Golden Vegetable Shortening FLUFFO 3-Lb. Can	91c
Sunshine Crisp Crackers HI-HO's 16-Oz. Pkg.	31c	Sunshine Fresh Vanilla WAFERS 12-Oz. Pkg.	31c
Special Low Retail on Libby	No. 2 Cans 2 for 25c	<b>Tomato Juice</b> 2 46-Oz. Cans	<b>59c</b>
"Our Finest Quality" A&P Fancy	No. 2 Cans 2 for 25c	<b>G'Fruit Juice</b> 46-Oz. Can	<b>25c</b>
Special Low Retail on Cookies		<b>Burry Choxans</b> 20-Oz. Pkg.	<b>39c</b>
"Our Finest Quality" A&P Blended Juice 46-Oz. Can	33c	Anniversary Value Comstock Whole Beets 16-Oz. Can	10c

**SPECIAL 100<sup>th</sup> ANNIVERSARY OFFER!**

Beautiful CURRIER & IVES decorated CANISTERS without cost when you purchase 100 OUR OWN TEA BAGS Both Only **89¢**

Every canister lithographed with one of four full-color reproductions of a rare Currier & Ives print. Choose from: The Home of Washington, Home to Thanksgiving, The Village Street, and American Homestead Winter.

**A&P TEAS FOR TASTE AND SAVINGS!**

**Save on Meats!**  
"SUPER-RIGHT" 12 TO 16 LB. AVG. SHORT SHANK  
**Smoked Hams**  
WHOLE OR SHANK HALF Per Lb. **47¢**  
Shank Portion Lb. **35c** Butt Portion Lb. **49c**

Cap'n John's Precooked Fish Sticks 10-Oz. Pkg. **35c** "Super-Right" Thick Sliced Bacon 2-Lb. Pkg. **95c**  
"Super-Right" Delicious All Meat—Sliced  
**BOLOGNA** 1-Lb. Pkg. **49c**

**Fruits & Vegetables!**  
Large Crisp **2 FRESH HEADS**  
**Lettuce** **29¢**

Large Golden Bananas 1b.	10c	Golden, Fresh Corn 5 Ears For	29c
Red Bliss Potatoes 4 lb.	25c	California Oranges 9 For	49c
Western Winesap Apples	2 Lbs.	25c	
Fresh Crisp Celery GRAND FOR SALADS	2 Lg. Stks.	17c	
Pink Meat Grapefruit	5 Lb. Bag	35c	

Green Giant Brand Green  
**PEAS 2** 17-Oz. 303 Cans **35c**

SPECIAL: Mel-O-Bit Cheese Slices 2 6-Oz. Pkgs. **39c** A&P G'Fruit Sections 2 16-Oz. Cans **35c**  
A&P Sliced Pineapple 2 No. 2 Cans **55c** Bab-O Cleaner 2 Reg. Ctns. **31c**

Special Low Retail on Aristocrat  
**Saltine Crackers** 1-Lb. Pkg. **19c**