

### Franklin McSwain Serving On USS Northampton

Midshipman Franklin McSwain, son of Mr. and Mrs. H. McSwain of Murphy, is currently serving aboard the USS Northampton, the fleet flagship of Vice Admiral William R. Smedberg III, Commander of the Second Fleet, which is participating in fleet exercises off the Eastern seaboard.

Northampton, commanded by Captain John M. Lee, USN, left her homeport of Norfolk, Virginia in early June. Northampton was the guest of New York City for a week, participating in the 350th anniversary of the founding of the Hudson river. Since that time, the ship has been at sea.

This cruise is one of three that will equip the Midshipmen, future officers of the U. S. Navy, with the technical knowledge so vital to our country's defense.

The Midshipmen will be rotated in the operations, gunnery and engineering departments during the cruise. They will also participate in shipboard drills and watches, be assigned to battle stations and attend classes.

As the Navy's only fleet flagship, Northampton is well suited to training in command and control functions at sea. Her extensive radio and radar facilities enable her to be the very nerve center of a large task fleet and ear-marks her as an important segment of the Navy.

### Andrews Resident Observes 85th Birthday

ANDREWS—Mrs. Susie Batchelder was honored July 5 at which time friends called in the afternoon at her home to greet her on the occasion of her 85th birthday.

Mrs. Batchelder was born in Nova Scotia July 6, 1874.

For a number of years she lived in Boston and Malden, Mass. where she served as operator for the New England Telephone and Telegraph Company. Mr. Batchelder died in 1918.

Later, Mrs. Batchelder moved to Tacoma, Wash., where she was employed by the Western Telephone and Telegraph Co.

Active in all phases of work of the Andrews Free Methodist church, she also serves as organist.

She has one daughter Miss Marjorie Batchelder who resides with her.

### Soil Conservation News by John Smith

John Wiggins of Raleigh, who is the Forest Technician for the Soil Conservation Service in North Carolina, was here for two days this week holding a school on forest management for the Soil Conservation Service technicians of Clay, Graham, Macon, Swain and Cherokee counties. The farm of Claud Anderson was used as a site for this school. Wiggins, who is a trained forester, showed the latest methods of selecting and marking trees for removal in a thinning operation. Practically every forester has his own method which he uses to determine which trees should be removed and which should be left for timber production. Generally, the plot will have about the same amount of trees left and removed regardless of what method is used for marking.

Anyone who is planning to cut any timber should get the services of a professional forester before starting a thinning or cutting operation. All agricultural agencies have a forester whose services can be obtained either free or at a very reasonable fee. The cost of marking will be more than returned in an increase in the price of pulp, or timber sold. Probably more money is lost by the farmers of North Carolina every year by selling a boundary of timber without knowing what it is actually worth. There are very few instances where clear-cutting is the proper thing to do, but all too many tracts are sold on this basis. Unless the land is to be put into cultivation or pasture after the timber is cut, it is necessary that seed trees be left to re-seed the area. If proper seed trees are not left the area will grow up in cull hard wood which will not be worth much.

In addition to the foresters available through the agricultural agencies, several pulp and paper mills have trained foresters who will give farmers good advice on how to cut timber to get the most out of it.

The farmer's share of the food dollar declined 12 per cent from 1952 to 1958.

A pole-type shelter open on all sides will protect cows from summer heat.

File for your federal gasoline tax refund.

### GARDEN TIME

An unusual request came the other day. It was of considerable interest to me and may be of interest to you.

A student from the School of Design is working on a project, in collaboration with others, in which plans are being made for the construction of a giant glass enclosed shopping center. He told me that from 12,000 to 15,000 square feet of planting space would be provided within the structure for plant materials that might be adapted to the controlled environment provided. From the space allocation for plants alone, you may be able to judge the size of the structure. Twelve thousand square feet would be equivalent to a greenhouse 60 feet by 200 feet which is sizable.

These specifications were given: a constant temperature of 72 degrees; a relative humidity of 45 per cent; and a day length of approximately 15 hours. Many plants would like the temperature; the humidity is low. 60 per cent would be better and the day-length of 15 hours would pose a problem with some plants.

We agreed that replacement of plants would be necessary at intervals to give variety and color and to replace plants which may become unhappy. Management of the planting areas would require skill and understanding. The economics of such a project would, of course, be brought into sharp focus.

Here is the list of plant materials we prepared, many of which can be used in your home, depending upon available space and growing conditions—hyacinth, tulip, daffodil, crocus, ageratum mexicanum, snapdragon, celosia, impatiens, petunia hybrida, African marigold, French marigold, verbena, zinnia elegans, Chinese spotted and variegated evergreens, kangaroo vine, grape ivy, dumb cane (Dieffenbachia), English ivy, watermelon begonia, green peperomia, Philadendron (cordatum, dubium, blushing, split leaf and tri-leaf), wandering jew, devil's ivy, shrimp plant, cacti, coleus, gardenia, lantana, caladium, and palms. More next time.

Keep poultry records.

Blossom-end rot of bell pepper is believed to be related to calcium deficiency.

The modern supermarket has over 4,000 items from which to choose.

Creep feed calves on equal parts by measure of shelled corn and whole oats.

Don't dump trees and shrubs with lawn mowers.

### Stamp To Honor Conservation Farmers

Cooperators of the Cherokee County Soil Conservation District are among those honored by issuance of the world's first soil conservation stamp. Postmaster Joe Ray said recently.

Mr. Ray said the stamp, to be issued August 26 at Rapid City, South Dakota, is "a tribute to the nation's conservation farmers and ranchers including the cooperators of the Cherokee County District, which has been operating since 1953."

"The 4-cent stamp is in recognition of the farmers and ranchers who are demonstrating good soil stewardship," Mr. Ray said. "It is a salute to their soil conservation districts, and to the professional workers of State and Federal government who help them."

The stamp will go on sale August 26 at Rapid City, South Dakota, at the annual meeting of the Soil Conservation Society of America, a professional organization, Ray said.

On the following day, the stamp will go on sale at other post offices throughout the country, including those at Murphy and Andrews.

### Homecoming Set At Young Harris College July 25

The Young Harris College annual Homecoming and Alumni Day will be held Saturday, July 25, on the campus at Young Harris, Ga.

Registration for the alumni activities will begin at 9 a.m. and the Alumni Association meeting will be held at 11:30 a.m. in the Susan B. Harris Chapel.

Following the business meeting and program, the Homecoming dinner will be served at 12:30 p.m. at the Willis-Dobbs dining hall.

The remainder of the afternoon will be devoted to class reunions, tours of the buildings and grounds, and trips to nearby resort areas.

The dormitories will be open Wednesday, July 22, for alumni and friends who desire accommodations early, and the dining hall will be prepared for early guests.

### CATHOLIC OUTDOOR MISSION

TIME 7:30 P. M.

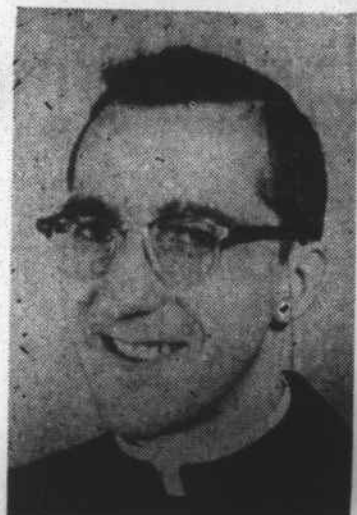
THREE NIGHTS

FRIDAY, SATURDAY, SUNDAY

JULY 17, 18, and 19th



Rev. William Bow of Russellville, Kentucky



Rev. Carl Boehler Of Murphy's Catholic Circuit

Place: Ranger - Culberson, N. C.

On Highway 64, 10 Miles West Of Murphy.

Watch for the tent and cars on edge of the Notla Farm.

Hear the Gospel Harmony Quartet

Scripture Reading and Sermons by Rev. John Carrigan of Cincinnati, Ohio,

Rev. William Bow of Russellville, Kentucky, and Rev. Carl Boehler of Murphy's Catholic Circuit.

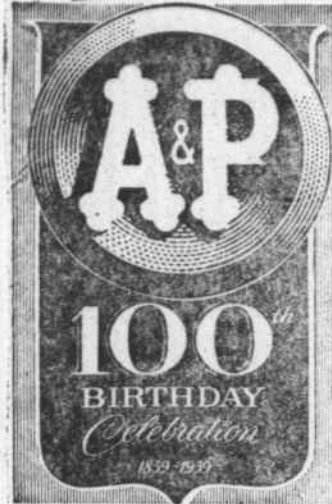
All are Welcome - Bible Movies - No Collections Sponsored by Murphy's Catholic Chapel

Father Joseph Dean, Pastor.

Father Jim Wilmes, Associate Pastor.

### Just Can't Beat that A&P! JANE PARKER APPLE

# Pies EA. 39¢



Heat and Serve With  
Crestmont Brand  
ICE CREAM  
1/2-Gal. Ctn. 69c

PRICES IN THIS AD ARE EFFECTIVE THROUGH SATURDAY, JULY 18th.

SPECIAL! 5c OFF LABEL Hearty and Vigorous  
**OUR OWN TEA** Reg. 1/2-Lb. 49c  
54c Package

KRAFT FRENCH DRESSING

8-Oz. Bot. 23c

ARMOUR OR LIBBY  
Corned Beef HASH  
3 15 1/2-Oz. Cans \$1.00

HANDY ANDY

Pt. 39c Qt. 69c Bot.

GRAND LOW PRICE  
DETERGENT  
SAIL 12-Oz. Can 23c

ORLEANS  
HORSE MEAT DOG FOOD  
2 1-Lb. Cans 43c

ZEST SOAP  
2 Regular Bars 29c

ZEST SOAP  
2 Bath Bars 41c

DUZ SOAP  
Lg. Pkg. 35c Gt. Pkg. 83c

Blue Dot Duz  
Large Package 35c

SUPER SUDS  
WITH CHINA  
Lg. Pkg. 37c Gt. Pkg. 85c

**Special Sale!**  
3 LB. BAG \$1.45  
EIGHT O'CLOCK COFFEE 1-LB. BAG 51¢

California Large 27 Size — Tasty

**Cantaloupes** Ea. 23¢

Medium To Large Pudding Perfect — Golden

**Bananas** 2 Lbs. For 19¢

California White Seedless Grapes Ea. 25¢ Large 26 to 28 Lb. Bags Watermelons Ea. 39¢

ANN PAGE YOUR CHOICE 25c SALE  
12-Oz. Jar Red Raspberry Preserves 10-Oz. Jar Blackberry Preserves  
12-Oz. Jar Blackberry Jam 12-Oz. Jar Blackberry Jelly

A&P Grape Juice 24-Oz. Bot. 29c Apple Kero Brand APPLE JUICE 46-Oz. Can 29c  
Aristocrat Saltines 2 1-Lb. Pkgs. 35c Golden Maid MARGARINE 2 1-Lb. Pkgs. 31c  
A&P G'Fruit Sections 3 16-Oz. Cans 49c Superfine Triple SUCCOTASH 2 16-Oz. Cans 39c

Save on "Super-Right" Meats!

SPECIAL! "Super-Right" Quality Government Inspected WHOLE

**FRYERS** Lb. 29c

Cap'n John's Breaded SHRIMP 10-Oz. Pkg. 49c FRANKS BACON "Super-Right" All Meat 1-Lb. Pkg. 49c Allgood Brand Sliced 1-Lb. Pkg. 39c

**PURE PORK SAUSAGE**

"SUPER-RIGHT" QUALITY  
1-Lb. Roll 29c 2 Lb. Roll 55c

# dexola 49¢

A&P's Own Highly Unsaturated Pure Vegetable Oil — Equal To The Best — Yet Costs You Less! QUART BOT.

ad Detergent Lg. Pkg. 37c Gt. Pkg. 85c	VEL POWDER Large Package 34c	VEL LIQUID 12-Oz. Can 40c 22-Oz. Can 71c	IVORY LIQUID 12-Oz. Can 40c 22-Oz. Can 71c
Reynold's Wrap 25 Feet Long—12 Inches Wide—Roll 31c	OXYDOL Lg. Pkg. 35c Gt. Pkg. 83c	FAB Large Package 34c	FLORIEN Each Can 73c