

THIS WEEK
—In Washington
With Clinton Davidson

Davidson

Not long ago some seventy farm editors from various parts of the country sat down together to make a forecast of what farming in the United States will be like in twenty years from now.

These were men who have watched the tremendous changes of the past twenty years and, because of their experience, they are among the best qualified to project those and other changes an equal number of years into the future.

I am sure that each of them, however, would be the first to admit that had a similar meeting taken place in 1939 none of them could have made a very accurate forecast of what farming is like today. Nevertheless, their opinions

Don't Get Up Nights Make This 4-Day Test

Flush kidneys with BUKETS. Help nature eliminate excess acids and other wastes that may cause frequent or scanty flow, burning, backache, leg pains or getting up nights. Your 50c back at any drug store if BUKETS do not completely satisfy. NOW at Mauney Drug Co.

about the future are interesting and logical.

There have been more changes in farming during the past twenty years than most of us would realize without stopping to think back.

There are one-third fewer people living on farms, production per worker has more than doubled and mechanization has revolutionized farming.

Push Button Farming
Automation is the next great step in farming the editors agreed. "Human muscles will be replaced by labor-saving, push-button farm equipment over the course of the next twenty years," the editors agreed.

Machines run by electricity will do more of the farm chores, including livestock and poultry feeding, watering and manure handling. Farm wives will have more labor-saving "gadgets" to help them with their housework.

The editors expect machines that will prepare the soil, plant, fertilize and treat for weeds in one operation. Six, eight and ten-row equipment will become common.

Dwarf corn for combine harvest that will grow in narrow rows and set six to ten ears per stalk will more than double corn yield per

Don't Say Kekko Until You've Seen Fairyland

By PHYLIS B. SABB

"Don't say kekko until you have seen Nikko." Translated, this means that one does not have the right to use the "kekko" (which means fabulous or gorgeous) until he has seen the city of Nikko. This ancient Japanese proverb expresses simply the exquisite natural beauty of Nikko.

Nikko, located about 130 miles from Tokyo is another of Japan's famous resorts. Nikko is a fairyland of majestic mountains, waterfalls and lakes.

A bus ride through these rugged mountains offered several thrills for us, and no one was sorry when we got back to sea level. I've seen some mountains in my day but compared to these, those I've seen were mere hills. Hair pin curves? We only went around 31 coming down. Our guide jokingly said that our bus driver had never had a wreck. Some joke. One wreck in those mountains and brother, you wouldn't live to have another!

The road through the mountains was the most modern I saw in Japan. It was completed in 1954. It took 250,000 workers two years to build it. And half of the workers were women.

Farm Income To Double

Farm surpluses will gradually be eliminated while farm size and individual farm income will double between now and 1980, the editors predicted.

They predicted that farmers-conducted marketing organizations will take over the government's role in agriculture and gradually bring production into line with demand. The growing population, increased foreign trade, and new uses for agricultural products will also help eliminate farm surpluses.

There was unanimous agreement that fewer farms, each of larger acreage but still family-operated will emerge over the next twenty years. Marginal, unprofitable units will be absorbed by the profitable ones that remain.

Farming in the future will require more capital investment, but fewer workers. The moderate-size farm in 1960 may represent an investment of \$200,000 or more, in land, equipment and buildings.

Successful farmers will be skilled businessmen, usually college-trained in all phases of production and marketing. The average city dweller's impression of a farmer as a hayseed, already disappearing, will be completely gone by 1980.

Farm homes, say the editors, in the 1980's will be indistinguishable from those in the city and will offer the added advantage of fresh air, peace and quiet.

"We went up 4,200 feet in a cable car almost to the top of a mountain. To reach the very tip top, you had to take another cable car, but I passed up this trip. I was high enough to suit me. While we were admiring the view, our guide pointed out a mountain in the distance that was 8,200 feet high. He said that only men were allowed to climb it. Darn it!

Kegon was a strike, the second largest in Japan, is in the Nikko National Park. It is truly beautiful. We took an elevator down about 300 feet for a better view. Our guide told us that this waterfall is a favorite spot for disappointed lovers to commit suicide. Around 40 people chose this way out last year.

In the midst of Nature's splendor of another kind. A shrine made by many men, who worked countless hours, and three centuries later, men still work preserving it's beauty.

This is the Toshogu Shrine, Japan most beautiful and well known. As you gaze in awe at so much beauty, you find yourself thinking that this will be the last shrine you will visit in Japan for any other would surely be an anticlimax. This shrine is so famous that during the tourist season 15,000 people visit it each day. In the "off" season, 8,000 people per day see it.

Toshogu Shrine is a mausoleum of the first Shogun and was built in his memory by his grandchildren. Shogun was head of the military part of Japanese government until he was overthrown by the Emperor in the middle 18th century.

Toshogu Shrine is a mausoleum "hand made" for it is entirely covered with hand carvings, both inside and outside. It is repainted every 50 years and takes the painters a total of 12 years to complete the job.

Locking at the shrine is like looking at a tremendous display of jewels, for it is painted in brilliant enamels. And so much gold! Not gold paint either but real gold leaf. The task of painting this shrine must cost a fortune.

The shrine itself is surrounded by roads of other chapels, temples and shrines of lesser consequence. On one of these buildings is the original hand carving of the world famous Three Monkeys. See no evil-Speak no evil-Hear no evil. The myth about the monkeys originated in China many centuries ago.

Entirely covering the park around Toshogu Shrine are Cryptomeria trees (somewhat like our Calif. Redwoods.) In 1648, 40 thousand trees were planted here and on the side of the road leading to Tokyo. Of the original 40 thousand, only 18 thousand trees are left. Just seeing these majestic trees is indeed a privilege in itself.

Don't Spoil Christmas

The traditional burning of the Christmas tree outdoors is a thrilling burning of accidentally ignited indoors it can be a flaming funeral pyre, the National Safety Council said.

"Filled with natural pitch and resin, the Christmas tree is one of the most combustible objects known virtually impossible to extinguish by ordinary methods.

"When the neeeties fall," the Council said, it should not be burned branch by branch, in the fireplace, because the roaring fire is difficult to control. It should be burned outdoors, in fire-safe areas.

"The months of December and January," the Council added, "are the leading months for fire burns, and last year 93 fire deaths occurred during the Christmas holiday alone."

The Christmas tree tradition is a wonderful part of the season, the Council said, so keep it wonderful by observing these few precautions:

Buy a tree no bigger than you need. The larger the tree, the larger the fire hazard.

Wait to put it up until just before Christmas. Keep it in a cold place until then.

Saw off, diagonally, at least an inch of the trunk and place in a stand filled with water.

Place tree away from sources of heat such as TV sets, radiators, powerful electric lights, which speed up the drying process.

Use nonflammable decorations. Keep metallic icicles or tinsel away from light sockets. Dangling into the socket, they can cause short circuits or flash fires. Do not overload circuits, or replace normal fuses with oversized ones.

Use electric lights only. Be sure they bear the Underwriter's Laboratories label. Check for frayed cords, faulty sockets, loose connections.

Georgia Tech having received the degree of Bachelor of Science in Industrial Management in March, 1959. He is also a 1954 alumnus of Murphy High School, and served six months active duty with the Army in 1957.

Never use candles on the tree or around any combustible decorations. Turn off tree lights before leaving the room or the house.

Don't operate electric toys, such as trains, beneath the tree. Arcs can ignite decorations or wrappings. Use stool or ladder while trimming the tree. Let children decorate only lower branches. Don't smoke while trimming or dismantling.

Burn the tree in a fire safe area outdoors. Some communities have tree-burning bonfires under the supervision of the fire department. If your community does not, contact your fire department and seek its cooperation. Youth organizations may collect the trees.

Boiling Springs

Boiling Springs News
Clinton Stiles who is stationed with the army in California, visited here Sunday.

Mr. and Mrs. Sheridan O' Dell and children visited here Sunday. Did Rhodes visited Sam O' Dell and family Sunday night.

Marshall Allen and Marvin Allen visited Mr. and Mrs. Z. B. O' Dell's last week.

Mr. and Mrs. Warren O' Dell of Knoxville, Tenn. visited their father and mother Sunday.

Those who would be wassailing go on Christmas are indebted to Henry VII. World Book Encyclopedia says the English king introduced the drink of hot ale and spices from the Scandinavian countries in the 1400's. In some parts of England, trees and fields were "wassalled" or toasted, to insure a good crop.

Mrs. Ben Warner Presents Program

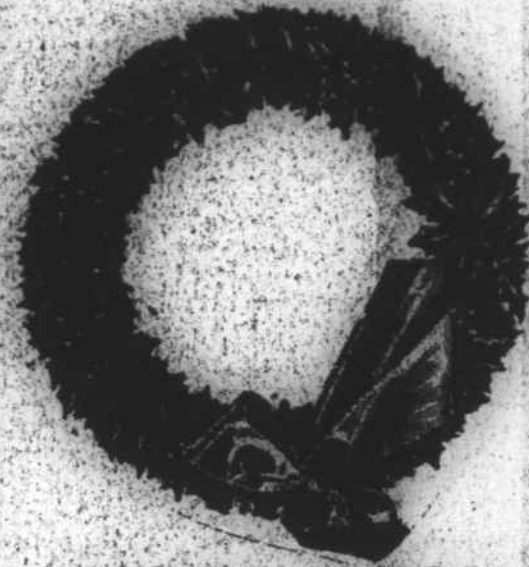
The monthly meeting of the Episcopal Church Women was held at the Parish House on Wednesday, Dec. 9 at 7:30 p.m. Devotion was by Rev. Haason. The program "God's Gift to Man: Nativity Bible" was given by Mrs. Ben Warner. During the business session plans

were made for a dinner to be held at the Parish House, Jan. 14. After business a Christmas party was held for the husbands of the members who played Bingo.

Advertising In The Cherokee Scout Shows Progress

FOR YOUR HOLIDAY DECORATIONS....

Visit



MURPHY FLORIST

Andrews Rd. Murphy, N. C. Tel. VE 7-2213

Always Prompt Courteous Service Reasonable Prices

When every second counts



CALL LONG DISTANCE



When you're racing time to get a message through, a long distance call is your fastest way.

You can go almost anywhere in the world in just seconds.

So next time you're in a hurry, save time and call long distance.

WESTERN CAROLINA TELEPHONE CO.

WONDERFUL WEARABLE WELCOME GIFTS for MEN

The Man's Gift of Quality—

- | | |
|-------------------|-----------------|
| CURLEE CLOTHES | WING SHIRTS |
| PORTO - PAD SHOES | ESQUIRE SOCKS |
| MALLORY HATS | WOOLRICH SHIRTS |
| HOUSE SLIPPERS | TIES |
| HANDKERCHIEFS | JEWELRY |
| UNDERWEAR | BOOTS |
| BILFOLDS | DUXBAK CLOTHING |
| WOOLRICH JACKETS | SLACKS |

WE HAVE A LINE OF MEN'S SOCKS GUARANTEED 10 YEARS !!

SPECIAL \$1 pr.

The Man Shop STORE OF QUALITY

TENN. ST. MURPHY, N. C.



Adir Aronson

Aronson Accepts Merchandising Position

Adir Aronson, son of the late Mr. and Mrs. Samuel Aronson of Murphy has accepted a merchandising position with Davison-Paxon, Inc. in Atlanta.

He will become Assistant Buyer for down stairs, men's sportswear, furnishings, suits and work clothing.

He was formerly Assistant Buyer of the basement boy's department at Rich's Inc. He joined Rich's in March of this year; completed their Junior Executive Training Program; filled the capacity of Jr. Assistant Buyer in the basement boy's department; becoming a full Assistant Buyer this past September.

Mr. Aronson is a graduate of Georgia Tech having received the degree of Bachelor of Science in Industrial Management in March, 1959. He is also a 1954 alumnus of Murphy High School, and served six months active military duty with the Army in 1957.

He is married to the former Hanna Zimmerman of Atlanta.

The World's First "TURNPIKE-PROVED" TIRES

Goodyears now give up to 25% more safe mileage!



better than ever but never lower priced!

\$12.95

GOOD YEAR TURNPIKE-PROVED ALL-WEATHER

They're better because they are built with phenomenal new rubbers, chemicals and cords to give you more, safer mileage than ever before. For a safer tire at a lower cost, don't accept less than these Goodyears. They've been "Turnpike-Proved" for your driving peace of mind.

Size 6.70 x 15 Fits most pre-1957 models of Plymouth, Ford, Chevrolet, Hudson, Nash, Studebaker

Size 6.00 x 16 fits most older models of Plymouth, Ford, Chevrolet, Nash, Studebaker. \$11.95*

Size 7.10 x 15 fits most pre-1957 models of Dodge, Buick, Nash, Olds, Mercury, Pontiac, Hudson. \$14.85*

Size 7.60 x 15 fits many recent models of Chrysler, DeSoto, Buick, Olds, Hudson, Mercury, Packard. \$16.25*

*blackwall Tube-type plus tax and retreadable tire.

ALL-WEATHER WHITE SIDEWALLS \$15.95

MORE PEOPLE RIDE ON GOODYEAR TIRES THAN ON ANY OTHER KIND!

J. H. DUNCAN TIRE COMPANY