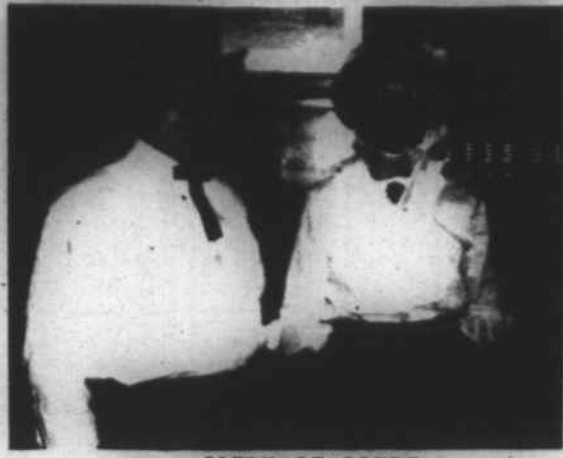


CONGRATULATIONS CLAY COUNTY



SCHOOL SUPERINTENDENT
Hugh S. Beal, Superintendent
Dwayne L. Beal, Secretary



CLERK OF COURT
George H. Martin, Clerk and
Mary Bill Allison, Deputy



WELFARE DEPARTMENT
Betty Cabe, Alvin Penland,
Betty Alexander



COUNTY AGENT
Rufus G. Vick, County Agent
George Bowers, Assistant County Agent
(backrow)
Miss Fredia V. Morgan
Miss Justine Rozier
Mrs. Doris Moore



COUNTY COMMISSIONERS
Carl Parker, Chairman
Neal Jarrett, and William T. Groves



CIVIL DEFENSE DIRECTOR
Carl D. Moses



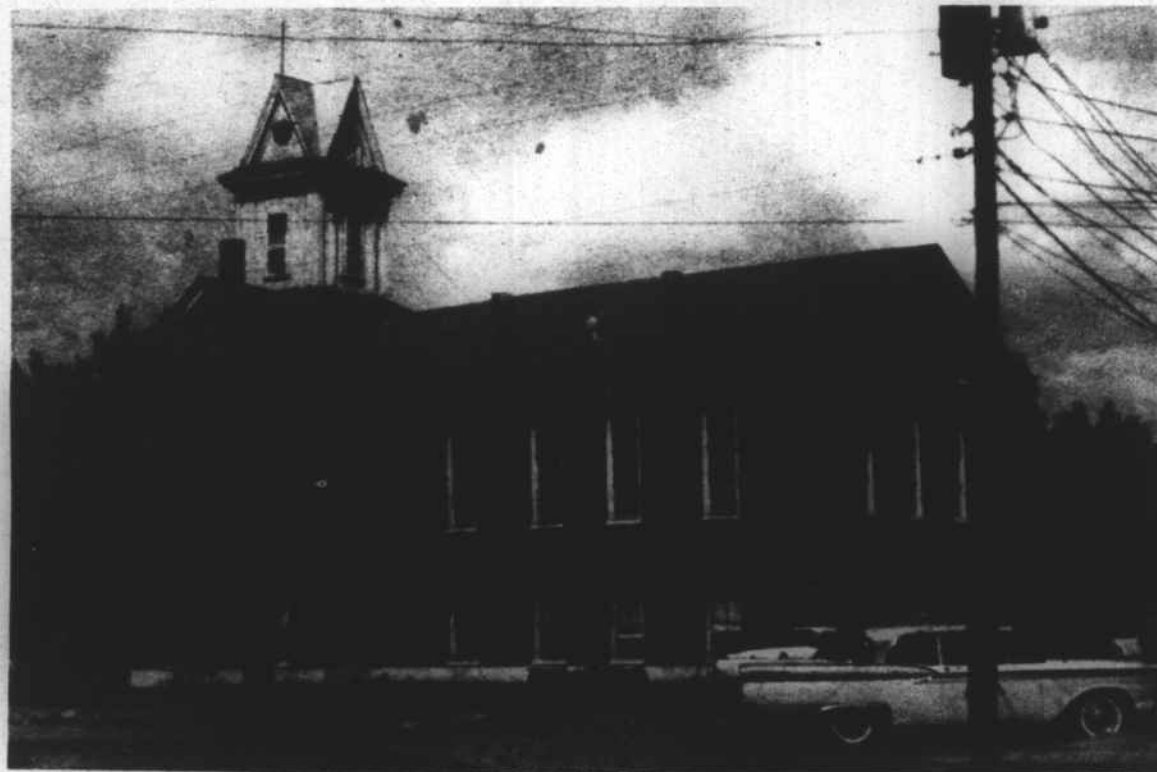
**CHAIRMAN CLAY COUNTY BOARD
OF EDUCATION**
Paul Caler



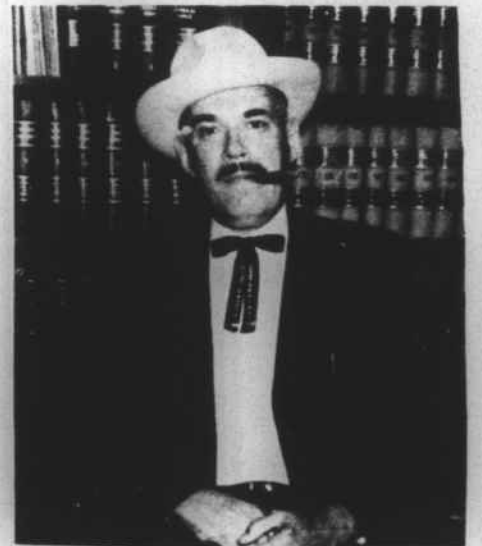
SHERIFF'S OFFICE
Fred Davis,
Dee Barnard
Sheriff and Mrs. Neal Kitchens



LIBRARIAN
Mrs. P. C. Scroggs



CLAY COUNTY COURTHOUSE



COUNTY ATTORNEY
T. C. Gray



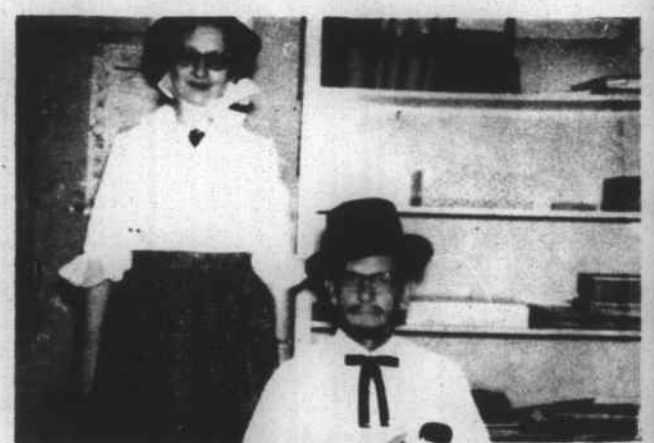
HEALTH DEPARTMENT
Mrs. Garth Thompson,
Dave Moody, Mrs. Jimmy Johnson



**CHAIRMAN COUNTY BOARD
OF ELECTIONS**
Garland W. Martin



GAME PROTECTOR
Harold E. Norton



REGISTER OF DEEDS
Mary Bill Allison Secretary
Mont Reece, Register of Deeds



CORONER
Dr. L. R. Staton



COUNTY SURVEYOR
C. E. Fraley



REPRESENTATIVE
Wayne G. West



ACCOUNTANT
Neal Rogers



FOREST WARDEN
Jack Parker

CLAY COUNTY OFFICIALS & EMPLOYEES