

Pembroke State University

BY GENE WARREN



PSU RECEIVES \$70,028 DURING 1981

A total of \$70,028.13 was received by Pembroke State University's Foundation and Endowment during the past year, according to information received from Walter Oxendine, PSU director of development.

"This is a \$6,000 improvement over 1980," said Oxendine, who says giving to the University has been at its greatest level during the 2 1/2-year administration of Chancellor Paul Givens.

The biggest month in gift receiving was October when \$24,924.50 was received by PSU. That is the month in which PSU always has the kickoff dinner to its Annual Giving Campaign.

Of the \$70,028.13 received,

\$58,937.70 goes into the PSU foundation and \$11,090.43 into the endowment.

TWO BIG LYCEUM SERIES ATTRACTIONS NEXT WEEK

Pembroke State University's Lyceum Series gets back on track in a hurry last week with two big attractions back-to-back to start the new semester.

On Tuesday, Jan. 12, the National Players will present William Shakespeare's "Much Ado About Nothing."

Three nights later on Friday, Jan. 15, Sen. William Proxmire of Wisconsin will be at the PSU Performing Arts Center, speaking on the issues of today. A press conference will be held after his talk.

Both events start at 8 p.m., and tickets are \$5. PSU students with I.D. cards are admitted free.

'PROFESSIONAL PROFILES' PUBLICATION IS EDITED

A new Pembroke State University publication, "Professional Profiles," will soon be off the press. In it nine PSU professors are profiled as to their professional accomplishments such as publications they have had, honors received, grants obtained, etc.

The idea of the publication is that of Dr. Leon Rand, vice chancellor for academic affairs at PSU whose office is sponsoring the edition. The editor is Dr. Dalton Brooks, director of institutional research at PSU.

Professors profiled are (listed alphabetically): Dr. Jose D'Arruda, Dr. Robert Gustafson, Dr. Rhodes Peele, Dr. John Rimberg, Dr. Frank Schmallegger, professor Ralph Steeds, Dr. Shelby Stephenson, Dr. Kathy Sullivan, and Dr. Eugene Tolbert.

RECYCLING ALUMINUM PROJECT BEGINS AT PEMBROKE STATE

In an effort to provide funds for student scholarships and student activities, PSU is collecting aluminum cans for recycling. Twenty-five receptacles are being placed around the campus for receiving the aluminum. Each receptacle has a "pitch-in" container with a heavy duty plastic bag. These are donated by Eagle Distributing Co., headed by Bob Caton, a good friend of PSU.

"The money we raise through this recycling process will be given back to the University," says Bryan Spivey, who heads the project.

Spivey said the collection process began Monday. A check will probably be presented to PSU at the end of the month, he added.

PSU, SOUTHEASTERN GENERAL HOSPITAL PRESENT WORKSHOP ON GERIATRICS

On Monday, Jan. 18, Pembroke State University's Office of Continuing Education and Southeastern General Hospital in Lumberton are presenting a workshop from 8:30 a.m.-4:30 p.m. at the Ramada Inn on Interstate 95 North on: "Joy in Geriatrics." Geriatrics deals with the problems and diseases of old age and aging people.

Conducting the workshop will be Nancy Fox, a graduate of the Brooklyn YWCA School of Practical Nursing who has researched hundreds of geriatric facilities. She is the author of "How To Put Joy Into Geriatric Care," now in its third printing. She also writes for such national journals as "RN Magazine," "Journal of Practical Nursing," and "Geriatric Care."

ADMINISTRATORS, DOCTORS, CLERGY AND VOLUNTEERS ARE URGED TO ATTEND. REGISTRATION FEE IS \$15.

Administrators, doctors, clergy and volunteers are urged to attend. Registration fee is \$15.

REMEMBER TO SEND IN ALUMNI HONOR NOMINATIONS

Feb. 13, 1982, is only five weeks away, and PSU alumni are urged to send in nominations for the PSU Alumni Association's "Distinguished Service" and "Outstanding Alumnus" awards.

The awards will be presented at the alumni dinner on that night.

Remember that to receive the "Distinguished Service" award, a person does not have to be a graduate of PSU—but he or she must have rendered outstanding service.

GARRY HENRY BACK FOR HIS LAST SEMESTER

The biggest news in the PSU athletic world is that Garry Henry, two-time winner of the Carolinas Conference "Male Athlete of the Year" award, is back at Pembroke State for his final semester. He should help to make the Braves' track team one of the nation's best—if not the best—this spring. A native of Australia, Henry has won more All-American honors by far than any other PSU athlete in history. His being back is great news for a New Year!

"It takes two to speak the truth—one to speak and another to hear." Henry David Thoreau

William McLean speaks at Pembroke Kiwanis Meeting

Pembroke Kiwanis welcomed Mr. William McLean, President of McLean Wholesale Grocers, of Lumberton as the speaker at its Tuesday evening meeting at the Town and Country Restaurant. Ray Lowry was program chairman for the meeting and Mr. McLean was introduced by Bernard Lowry.

Mr. McLean spoke of the growth of the Company from a two-car garage to a 160,000 square feet facility with 170 employees. A new meat department will add six new workers. The Company serves an average of 1,000 customers a week. He attributes the success of the Company to its policy of putting God first, family second, and the job last.

The food industry spends millions trying to get food to the consumer at lower prices. Transportation is the culprit for the high cost of food, and the consumer pays the bill. Legislation is now pending to

cut the transportation costs of trucking. Back-hauling is needed to cut down these transportation costs.

The "State" of Robeson is the greatest state in the union. What Pembroke means to McLean is the finest group of workers. The recent addition of a Computer Science major at Pembroke State University will enable McLean to use graduates to the benefit of the individuals and the Company.

Presiding at the meeting was John L. Carter, Club President. The invocation was delivered by Marshall Locklear. Langford Godwin led the singing with Ira Pate Lowry as accompanist.

Dobbs Oxendine was a visitor at the meeting and returning to Kiwanis after a leave of absence were Dr. Gibson Gray and Dr. Edward Livingston. Dr. Gray announced that former Kiwanian Dr. Karl Scheele will soon be coming from Germany to visit Pembroke.

LREMC Invites Members to Meeting

RED SPRINGS.—With a wholesale rate increase from Carolina Power and Light forcing up retail rates for Lumbee River Electric Membership Corporation consumers, the cooperative's membership can soon find out why.

"Because of the retail rate increase which goes into effect on January 10, we at Lumbee River EMC are inviting our membership to a special meeting on Thursday, Jan. 7 at 7 p.m. at the Red Springs office of LREMC," said spokesman Jim Autry.

"We want to inform our membership about the reasons why a retail rate increase is necessary at this time."

Realizing that no time is good for a rate increase, Lumbee River EMC is hosting this meeting to tell its consumers about Carolina Power and Light's increase of millions of dollars over the next year, according to Autry.

"Since 70% of every dollar our members pay to LREMC goes directly to CP&L, we

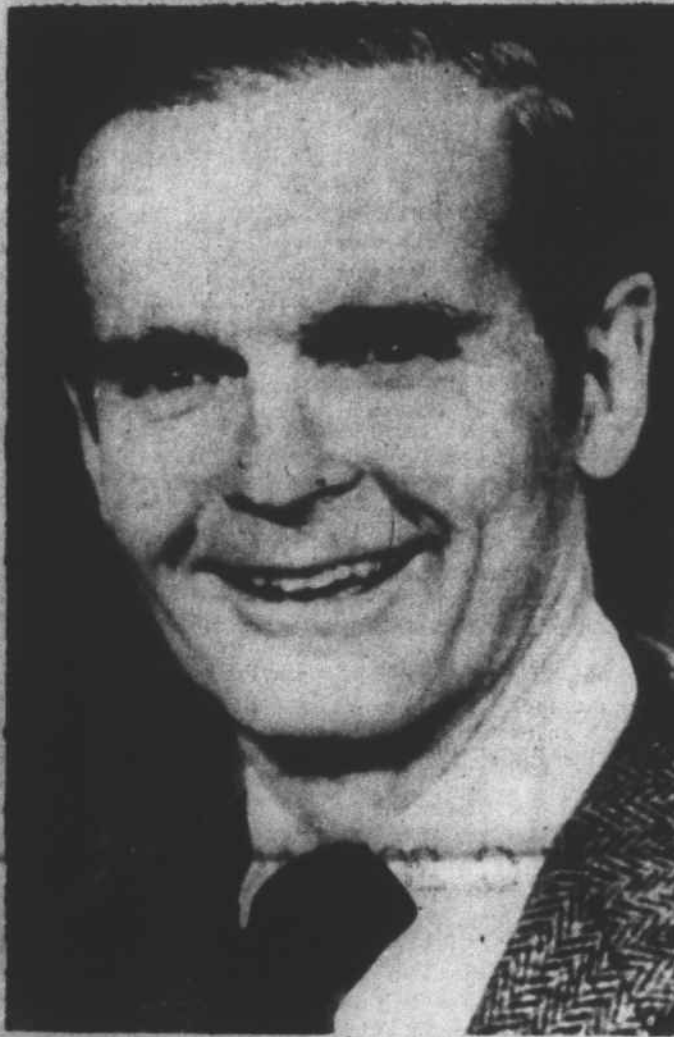
want them to see why we must raise retail rates, too," said Autry.

During the special meeting, members' questions about services, rate-making and other concerns will be answered. There will also be a discussion of the new miscellaneous service fees which LREMC will begin using on January 1.

Along with the special meeting in Red Springs, LREMC staffers will be available to attend meetings within other communities at the request of the membership.

"If someone wants us to go to Laurinburg or Rowland or Fayetteville, we'll be glad to speak with them about the changes their electric cooperative is undergoing," said Autry. "As member-consumers of Lumbee River EMC, the entire membership has the right to know."

The wholesale rate increase which CP&L was granted was initially to take effect on August 12, 1981. However, it was postponed to Jan. 12, 1982 by the Federal Energy Regulatory Commission.



Sen. WILLIAM PROX- day, Jan. 15. MIRE...Speaks at PSU Fri.

Sealy Posturepedic

\$129⁹⁵

PEMBROKE FURNITURE COMPANY

Complete Home Furnishing Center

MAIN STREET, PEMBROKE

SEALY POSTUREPEDIC MODELS	*TVs & Appliances
Premier	Air Conditioners
Royale EXTRA FIRM OR GENTLY FIRM	*Stereos
Imperial	*Shiny Vinyl by Conglomer

BUSINESS SERVICES DIRECTORY

521-2826

"If Not on the Shelves, We'll Order it."

COSMETIC OUTLET
Diane & Charles Oxendine, Proprietors
P.O. Box 743 - Pembroke, N.C. 28372

- *Brand Name Cosmetics at Unbelievable Discount Prices...
- *Halston *Ralph Lauren
- *White Shoulders *Polo *Chloe
- *Estee *Pierre Cardin

OPEN MONDAY-SATURDAY 9:30-5:30

Located on I-95 Service Road at NC 211

To Rent This Space
Call 521-2826

Traveling in Detroit?
CALL DOWNRIVER
TRAVEL AGENCY
Telephone 383-3666
3800 East Street
Livestock Park, Mich. 48146

THOMAS & SON
GENERAL ELECTRIC
HOTPOINT
FRANCHISED MAJOR APPLIANCE SERVICE

REFRIGERATORS - AIR CONDITIONERS
- DISHWASHERS
P-7 RANGES - WASHERS - DRYERS
MICROWAVE OVENS - ICE MAKERS

JAMES W. THOMAS, Mgr.
PHONES: 519 789-4724

MOORE'S CHAIN SAW SERVICE

PULASKI
HOMELITE
McCULLOUGH
CHAIN SAWS

SNAPPER & YAZOO LAWN MOWERS
ASK ABOUT OUR GUARANTEE
WE SERVICE WHAT WE SELL

521-9942

PROSPECT AREA

"ALL WORK GUARANTEED"

MCMILLIAN RADIATOR SERVICE
HWY. 74, P. O. Box 315
PEMBROKE, NORTH CAROLINA

JERRY MCMILLIAN

521-3153

PEMBROKE UPHOLSTERY

*Over 11 Years Experience
*Complete Furniture Rebuilding and Upholstery
*Estimates Given
Grover Lockhart, Owner
821-4990

WOOD'S

DONALD WOODS

Route 1, Box 426
Pembroke, N.C. 28372
Phone 521-3857

JACKIE STECKLAND
ORKIN

Pest Control

Call 738-7176 Daytime
Call 739-6506 Night time

BIG MO'S

GOAL POST RESTAURANT
Now Open!

Breakfast.....6-10
Daily Lunch Specials with...
*Homemade Biscuits & Cornbread.
Mo's Famous Hamburgers and Pit-Cooked Barbeque.

Hwy. 74, West of 718 - Pembroke, NC

FILLIN STATION

TRY THE NOON BUFFET...
From 11 a.m. til 2 p.m.
*All the Pizzas You Can Eat
And A Salad for \$2.49
Tuesday.....from 6-9

We Offer The Same Buffet.

THE CAROLINA INDIAN VOICE
P.O. Box 1075
Pembroke, N.C. 28372

RATES ARE:

1 Year In-State (North Carolina) ... \$9.00 + 36¢ tax = \$9.36
2 Years In-State (North Carolina) . \$15.00 + 60¢ tax = \$15.60

1 Year Out-of-State\$12.00
2 Years Out-of-State\$16.00

B&B OUTLET
2209 West 5th Street
Lumberton
Quality Clothing at Reasonable Prices
CALL 738-5147

*Next Door to Felicia's Styling Salon

LOWRY'S COUNTRY STORE
NOW SELLING BREAD AT WHOLESALE PRICES

*Complete line of food/Grocery
*All kinds of seed/Hardware
Notions

JOE LOWRY Proprietor
CALL 521-4096
Located on Red Bank Road. Less Than a Mile East of Prospect School

JOHN'S GARAGE
8 Miles West of Lumberton
Off Highway 74 - Ph. 738-9303

- *All Foreign and Domestic Transmissions
- *Established 1961
- *21 Years of Experience
- *Customer Satisfaction Our Goal.

digitec

WIRELESS ALARM SYSTEMS
CALL US FOR MORE INFORMATION
TED'S LOCK AND GUN REPAIR
Route 2, Box 399
Pembroke, N.C. 28372
Phone 919-521-3523

To Rent This Space
Call 521-2826