

LRDA IN ACTION

by Garry Lewis Barton
LRDA Public Relations
Office



October 12 and October 14 were meeting dates for the Parent Staff Meetings at Fairgrove and Wakulla Day Care Centers respectively. Lynneettah Jacobs, Director of LRDA's Day Care Program, conducted both meetings with comments directed towards

the newly developed 1982-83 Parent's Handbook. Receptive parents and energetic staffers provide for attractive, developmental environments for pre-schoolers. LRDA is indeed proud of the centers where young children prepare for the challenge of

the public school system. Ms. Teresa Hunt, Fairgrove Center Director, and Ms. Genemma Lowery, Wakulla Center Director encourage any parent interested in Day Care services at a minimal cost to contact them at 628-9171 [Fairgrove] and 843-2175 [Wakulla].

On Friday, Oct. 22, Jerry Wayne Zurcher (right), Assistant Manager of the Food Town Food Store in Lumberton, presented Shirley Locklear a \$2 gift certificate on behalf of Food Town Food Stores with headquarters in Salisbury, N.C. and Tom Smith, President.

The presentation officially marked a new savings service offered by Food Town Food Stores in conjunction with the Lumberton Food Co-op. With the purchase of \$10 or more of items in the Lumberton Food Town Store that is not available on the shelves of the Lumberton Food Co-op, a gift certificate will be presented which will be good for \$2 off

the customer's bill.

Shirley Locklear (center), Director of LRDA's CFNP Project which operates the Food Co-op, received the gift certificate along with Ronnie Hunt, Assistant General Manager of Lumbee River Electric Membership Co-op [LREMC]. LREMC supports the fine work of LRDA's Food Co-ops by providing the building in which the Lumberton Food Co-op is located. The Lumberton Food Co-op is located behind the LREMC office on Fayetteville Road in Lumberton.

For more information call 521-8602 and ask for any member of the CFNP staff. [Garry Barton Photo]



Children can suffer from blood pressure problems the same as adults. Glenda Locklear, LRDA's Health Facilitator working through the auspices of the ANA Project, recently thrilled the children at the Wakulla Day Care Center on Special Activities Day. The typically inquisitive pre-schoolers bombarded Ms. Locklear with questions about the process of taking one's blood pressure.

Good health care is only one aspect of the concern LRDA has for the children enrolled in the various day care centers sponsored by LRDA. The Wakulla Day Care Center staffers hope to interest the children in good health care practices at an early age in order to foster a life time of good health care concern.

Genemma Collins, Center Director and Lynneettah Ja-

cobs, LRDA Day Care Program Director, extend thanks to Glenda Locklear for the tremendous effort and patience she exhibited in working with the children. [Garry Barton Photo]

PEMBROKE MIDDLE SCHOOL HONOR ROLL

Pembroke Middle School has released the names of the honor roll for the first six weeks reporting period. From the office of the principal, Mr. Barry Harding, the list follows. All students are in the 7th grade.

A HONOR ROLL

Jamie Lee Jones, Bruce Troy Woodell, Clifton B. Lowry, Nina N. Locklear, Julia N. Lowry, Samuel Jacobs, Nichole McElenor, Melaine Rose Obriant, Brian Trent Woodell, John Brooks, Angela D. Revels.

B HONOR ROLL

Scott A. Hunt, Jeremy Sampson, Chandra Ransom, Anthony Q. Maynor, Carmen E. Deese, Roger D. Woodell, Scarlett Locklear, Sabrina Sanderson, Candace Guerra, Wendy G. Butler, Priscilla M. Jacobs, Ritchie L. Locklear, Audrey F. Lowery, Tyra D. McRae, Jennifer Oxendine, Ginger Kilgore, Jeanine Locklear, Roger R. Locklear, Maloria (Buffy) Revels, LaMeecha Sweet, Sandra Kay Bledsole, Charles Anthony Cummings, Nancy Regina Ford, Francis John Kremiski Jr., Pamela Carol Locklear, Lorrie Ann Lowry, Monica Lynn Lowry, Terri Penea Polk, Tyra Sue Sampson, Hilton Woodell, Tammy Revels, Tina Lowry, Natasha Jones, Alice McRae, Kerrie Oxendine, Brian Henery, Carol Locklear, Dacia Deese, Vondra Locklear, Petrece Hunt, Ronald Locklear, Tammy L. Hunt, Sondra Kay Maynor, Tina Ann Jacobs, Kelvin Brian Oxendine, Shauna Revels, Patricia Cummings, Jamie Locklear, Tray Hunt, Truckee Locklear, Jamie Carol Oxendine, Kelli Sheffield, Charlotte Chavis, Stephanie Lowry, Melissa Dial, Reginald Oxendine, Teresa Cummings, Rose Locklear, Cynthia Jones, Wendy Chavis, Rose Strickland, Joy Saxon, Cheryl Hammids, Gina Oxendine.

THE HOUSE

by Judy

They're painting the house where my brother Mike was killed.

Trying to paint away the Of the blood. Of the tears. Of the pain.

It doesn't help!! Not for those of us who are crying those tears and feeling that pain.

Not for those of us who must go that way, and pass that house almost every day!

Not for those of us who watch and listen to see what is going down.

Not for those of us who watch to see if the authorities will ever-ever come around.

No-No amount of paint, Can take away that pain!

And no amount of paint can wash away a "bloody stain." We love you Mike!!

"Taxes are the price we pay for civilized society." Oliver Wendall Holmes, Jr.



PEMBROKE CARPET SERVICE

Main St.

Pembroke, N. C.

•FREE ESTIMATES
•EXPERT INSTALLATION

Mon.-Fri. 8-6 S. 8-1

919-521-8331



imperial

SALE

SALE

WALLCOVERINGS

30% OFF

DO-IT YOURSELF WALLCOVERINGS

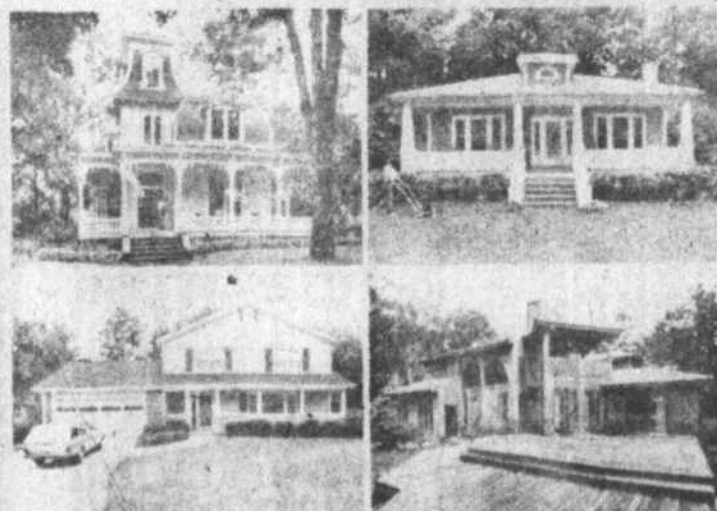
PREPASTED SCRUBBABLE STRIPPABLE



LIMITED WARRANTY TO CONSUMER
★ Good Housekeeping PROMISES
REPLACEMENT OR REFUND IF DEFECTIVE



THE HOUSE PLANS THAT COULD SAVE YOU UP TO \$250 A YEAR.



Savings based on houses with 1500 square feet. Bigger houses save more.

The way you build a home can make up to a 40% difference in what you pay for heating and cooling.

Yet some people tend to think an energy-efficient home has to be an exotic plan out of the 21st Century.

The fact is, almost any kind of house can be built to what we call "Common Sense" standards. And, even though it does cost a bit more to build, your energy savings of \$20 to \$30 a month make up the difference in a hurry.

What's more, chances are, there are also a lot of ways you can save in the home you're in now. So call us or stop by.

Whatever your housing situation, we're happy to help out. Because the more you get out of your energy dollar, the more we get out of ours. And that's better for both of us.

CP&L

The Better You Do, The Better We Do.

"For People On A Tight Budget"

HUNT'S AUTO COMPANY

Owner James A. Hunt

Phone 875-3055 or 875-3206 (Raeford)

Robert Eden, Sales Manager

Located on Old Maxton Highway near South Hoke School

OFFICE HOURS: 8 a.m. - 5 p.m.

RELIABLE USED CARS



CLEAN-LATE MODEL USED CARS

•If You Come Walking You'll Leave Riding!

•THE WALKING MAN'S FRIEND!

•Anything from a Volkswagen to a Cadillac!