

**IT'S TIME YOU KNEW** ---by LAWRENCE

**M**MARGARET SULLAVAN INvariably becomes car-sick when being driven in an automobile. YET NEITHER PLANES, SHIPS NOR TRAINS AFFECT HER THAT WAY! HOW DOES SHE AVOID CAR-SICKNESS?



**C**CLINT SMITH PLAYED IN 87 CONSECUTIVE PROFESSIONAL HOCKEY GAMES, FROM 1936, TO 1939, WITHOUT RECEIVING A PENALTY OF ANY KIND / WITH WHAT MAJOR HOCKEY TEAM DOES HE PLAY?



**N**O SNAKES EXISTED DURING THE "REPTILE AGE." FROM WHAT ANIMALS ARE SNAKES DESCENDED?

**T**ODAY, MORE PEOPLE TELL TIME BY BULOVA WATCHES THAN ANY OTHER WATCH IN THE WORLD / WHAT WAS THE MOST POPULAR METHOD OF TELLING TIME IN ANCIENT GREECE?



**Nobody's Business**  
By Gee McGee

**A**nother Good Subscriber Has Been Lost  
dear Mr. Editor:  
Mr. Art Square asks that you stop his paper at once, he has discovered that you are a laxationist, and he do not want to read behind anybody that is like that, he says you have been influenced by sen. wheeler and sen.



**HOME OWNERS FORUM**

By AENOR GORDON  
**S**TORM windows are a profitable investment for the home in localities where continued cold weather makes the fuel bill a maintenance problem.  
Heat passes so readily through single sash construction that as much escapes on the average as through all of the remaining wall areas combined. Consequently, a comprehensive storm sash installation may well reduce heat waste up to 50% regardless of further mural insulation with accompanying savings of from 25% to 30% in fuel consumption.  
Savings in fuel alone—not to mention the increased comfort—invariably pay for the windows in from one to three years.  
Q.—How can I paint brass fixtures so the coating will not peel off?  
A.—Before brass is styled with paint, the metal must be cleaned thoroughly and absolutely dry.  
Assuming the desirability of an enamel finish, experience indicates that three thin oil paint undercoats are preferable to two comparatively heavy, producing a more durable foundation with higher adhesive properties.  
Soft paste white lead thinned with one part hard-drying varnish and two parts turpentine is a widely specified formula for this work. The thin so that the brass color shows through the initial coat. The second and third ground coats are best tinted with colors-in-oil for increased opacity as well as to blend with the proposed finish.  
Allow plenty of time between coats for each to harden before the next is applied. When the third coat has set-up firmly, finish off with a single coat of good quality enamel.

holt and possibly by Charlie Lindbergh, he believes you have leaded towards Italy and Germany for two months, he thinks you must of married a Nazi or something, or you would remain American, he realizes a wife and dictate the newspaper policy of a husband.  
Mr. square says he has you fully paid to march the 15, proximately send him his refund, vizzily \$28. he will boycott your advertisers from now on unless you change back to the new deal, he will buy his needs from a catalog by a male in the future, he asks why you have returned against England and Great Britain, neither one of the great countries have ever harmed a single hair in your ballhead, he believes you are liable to sabre-targ something if you get a chance.

the article which cooked your goose with Mr. square was the one in last Saturday's paper where you said that uncle same had better collect his old debts before he lets the alleys make any new ones and that he would loan money to Germany or Italy at this riting, Mr. square says that England or Great Britain either one can have his part of the wealth in the U. S. England's cash seemed to be O. K. as long as it lasted; we took that and smiled, it looks reasonable that if a man spends his money with a merchant, he should have a little credit when it gives out.  
be sure not to let another one of your papers come to Mr. square's residence, he might fly into a tantrum and rush to the county seat and do your some boddily harm, he would rite or foam you himself and have you stop your paper, but he is a fear that he might say something that would sound good over the foam or be legal in the male, he is as mad as an old wet rooster, beware of him till he cools off, he is talking of volunteering to fight with cannady.

**A Flat Rock Citizen Will Not Wait On The Draft To Call Him.**  
seeker-tery of war, Washington, D. C.  
dear sir:  
the son of the undersigned, mudd lark of the state and county aforesaid was in the draft and his number is 477, he now wants to volunteer for service in the U. S. he do not want to go to Spain to fight, he says he is not mad at nobody across the briny deep, before mudd lark volunteers, he wants to know the following:  
1—do he get government pay from the day he registered if he volunteers now?  
2—by reason of him being a good carpenter, will he receive a captings pay?  
3—if he gets a captings pay, how long before he will be permitted to wear the stripes? (he means the captings stripes, not convicts), he is 6 foot 2 and will make a nice looking capting.  
4—can his wife get any of his pay thru the government? she quit him a year ago and found her bed and board elsewhere.

**The War In Europe May Be Decided By Effectiveness Of Rival Blockades**

The scope of the British victory in the Africa, and the surprising success of the Greecy army in Albania tend to distract attention from the deadly grapple in which Germany and Great Britain are engaged in the Atlantic ocean and adjacent waters where surface ships, submarines and airplanes are engaged in combat on, under and above the water.  
While the British consolidate their victory in Libya and proceed with the business of disposing of Graziana's shattered army and the Greek soldiers exploit their strategic gains in Albania and seek to oust the Italians from their important southern bases, the war of the blockades goes on with fatal consequences. It is the struggle that may ultimately be decisive in the war.

**JUTTING OFF SUPPLIES**  
The British blockade of continental Europe is tight, enforced for the most part by surface ships of the British navy. That it is effective is certain although Germany may be able to last longer than expected on account of the captured resources of conquered nations. Then, again, reserves accumulated for the war by Germany may have been larger than suspected and until these are exhausted the coils of the British blockade will not strangle the economic and military activity of the Nazi regime.  
Hitler countered the British blockade by measures designed to reverse it, that is, by bombing airplanes and submarines he seeks to sink so many merchant ships as to cripple British industry and war efforts. The experience of the World War indicated that all out u-boat campaign might succeed although experts discredited the threat by recalling that it was successfully met in the former struggle by the convoy system.

**BRITISH DEPEND UPON IMPORTS**  
We stress this phase of the war in order that readers may understand the situation and the possibility that the war may be won, if it is long drawn out, by either side without tremendous battles between huge armies. The blockade, backed by airplane offensives, may present victory to one side or the other. It may produce internal unrest that will vitally impair the morale of the people and thus tend to decide the issue of the combat.  
There is no present evidence that the British have been seriously weakened by the loss of merchant ships. Reduction in meat quotas, however, indicate that, at this stage, they must choose between importing food and hauling war supplies.  
In peace years, it is pointed out the British import 80 per cent of their bread and fruit, about 50 per cent of their meat, eggs and dairy products and a third of their fish and vegetables. These cargoes are giving way to munitions and the question is will the ships continue to be available for transporting these vital supplies which must reach the British isles and also the British soldiers elsewhere in the field.

**DIFFERENT FROM WORLD WAR**  
The convoy system was the World War answer to the u-boats. Merchant ships were collected and escorted through dangerous waters by warships. Depth charges from destroyers eventually turned the trust of unrestricted submarine warfare but, in the present battle, Great Britain, with half as many destroyers and a much larger naval task on hand, is unable to assign sufficient warships to the convoys.  
Hitler's present attack upon British shipping is greatly assisted by the development of the airplane which bombs merchant ships and much more important, scouts the ocean for approaching convoys. Long range German planes, operating between Norway and France, can locate convoys and report their positions to u-boat which then lay in wait for the clustered vessels.  
British dependence upon seaborne commerce is far greater than Germany's and the counter-blockade can be decisive without approaching the effectiveness of the British blockade of the continent. More than 4,000,000 tons of shipping have been sunk during the war.  
she says the law will give her all of mudd's salary except 5% per month, mudd chaws more tobacco per month than 5%).  
5—if he can't bet back pay, he might wait to be drafted, if you need good men at this riting, it will pay the government to pay back pay.  
6—muddlark is a crack shot with a rifle, he wonned 2 turkeys at a shooting match enduring xmas.  
7—how much are you all paying per month for good soldiers now? as soon as the above questionaire is answered, you will hear from Mr. Lark, sign it in the presence of a notary public and don't use no lead pencil, return it in care of the undersigned, if mudd's back pay can be had, kind to have Mr. Morgan thaw send it by registered mail to the same person, this spirit mudd's will awake the youth of the country to the crying need of loyalty and selfhood, mudd hopes his pay will be 50% per month, plus board and clothes.  
mike lark, rfd,  
his father,

Answers to "IT'S TIME YOU KNEW" by Lawrence  
Margaret Sullivan avoids car-sickness by driving herself.  
Clint Smith plays with the New York Rangers.  
In Ancient Greece, long before there was anything faintly resembling a Bulova Watch, people told time by "stepping-off" the length of the shadows of Gnomons, which resembled obelisks. The shorter the shadow, the closer it was to noon and vice versa.  
Snakes are descended from lizards.

"It may be important," says the TIMES, "in the winning of the war and in the rebuilding of democracy, that responsibility should thus be pinned unmistakably onto Germany."  
Can human sympathy and realities of the British blockade be correlated so as to benefit starving, helpless people? IT WOULD SEEM THAT HUMAN INTELLIGENCE COULD FIND A WAY..



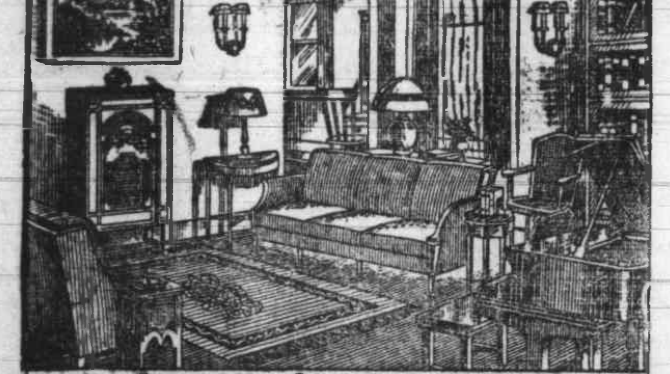
**WARNING!**  
carrying cash is dangerous!

On a meese tour, or any other trip away from home—suddenly your bill-fold is gone! Misplaced? Dropped from your pocket? Stolen? No matter how, you may be stranded without funds, your vacation wrecked, your itinerary ruined. Why run such risks?  
Protect your travel money against loss or theft with American Express Travelers Cheques. They are your own personal funds—safe, economical and spendable anywhere. Just sign your name to each cheque when you buy them—again when you spend them. They provide you with a "checking account" wherever you go. Should they be lost or stolen, countersigned, your money will be refunded in full.

**AMERICAN EXPRESS TRAVELERS CHEQUES**  
ARE ISSUED IN DENOMINATIONS OF \$10, \$20, \$50 AND \$100 AT 75 CENTS FOR EACH \$100 PURCHASE.  
**MECHANICS & FARMERS BANK**  
DURHAM, N. C. RALEIGH, N. C.  
C. C. SPAULDING, President  
R. L. McDOUGALD, Executive Vice-Pres.  
J. H. WHEELER, Cashier

**START THE NEW YEAR RIGHT**  
SAVE SYSTEMATICALLY A PART OF WHAT YOU EARN THIS YEAR WITH THE MUTUAL BUILDING AND LOAN ASSOCIATION  
A Thrift and Home Financing Institution  
**Mutual Building & Loan Association**  
F. L. McCOY, CHAIRMAN OF BOARD  
C. C. SPAULDING, President  
R. L. McDOUGALD, Sec'y.-Treas.  
114 West Parrish Street PHONE J-3921  
816 Fayetteville Street PHONE F-5921

**YOUR HOME IS INSURED—YES, BUT IS THIS?**



See the Local Agent of **BANKERS' FIRE INSURANCE COMPANY**  
DURHAM, NORTH CAROLINA  
CONSERVATIVE—SOUND—DEPENDABLE  
ACME REALTY COMPANY  
RALEIGH, NORTH CAROLINA  
UNION INSURANCE AND REALTY CO.  
DURHAM, NORTH CAROLINA

**When in NEW YORK For the Day, The Weekend Permanently The HOTEL THERESA**  
7th Ave. at 125th St.  
**FOR EXQUISITE LIVING**  
Distinctive location... All outside rooms; luxurious suites, Restaurant and Bar. Every comfort and facility. Large rooms with private bath \$2.00 Single—\$2.50 Double and up \$1.50 Single—\$2.00 Double and up  
Special Weekly & Monthly Rates  
WALTER W. SCOTT, Manager  
**Hotel THERESA**  
7th Ave. at 125th St., New York City  
Phone: MOnument 2-1700

**Durham Academy Of Medicine**  
**PROFESSIONAL DIRECTORY**

- LEO G. BRUCE, M. D.** Physician and Surgeon 814 1/2 Fayetteville St. Telephones Office J-6222 Res. L-4554
- DOCTOR A. S. HUNTER** DENTIST N. C. Mutual Building Office J-0891 Res. L-3581
- J. N. MILLS, M. D.** PHYSICIAN AND SURGEON Office 106 1/2 Parrish St. SPECIAL ATTENTION TO DISEASES OF WOMEN Trained nurse in attendance
- DOCTOR M. C. KING** Telephones Office 2536 Res. 249-1 Franklinton, N. C.
- DOCTOR E. P. NORRIS** DENTIST 707 1/2 Fayetteville Street Hours 9-1 2-3 4-7 Telephones Office J-8321 Res. J-9042
- S. M. BECKFORD, M. D.** GENERAL SURGERY 212 Montgomery Street Henderson, N. C.
- R. P. RANDOLPH, M. D.** PHYSICIAN AND SURGEON 312 Dowd Street Office Hours 9-10 3-4 6-7 Telephones Office N-5211 Res. N-5592
- W. A. CLELAND, M. D.** PHYSICIAN AND SURGEON Biltmore Hotel East Pettigrew Street Hours: 8:30-10:30 1-2 5:30-7:00 Telephones Office F-4021 Res. J-1634
- J. E. TURNER, M. D.** INTERNIST 618 Fayetteville Street Telephones Office L-8254 Res. J-8544
- J. W. V. CORBICE, M. D.** GENERAL SURGERY 711 1/2 Fayetteville Street. Telephones J-9081 L-8571
- J. S. THOMPSON, M. D.** PHYSICIAN 709 1/2 Fayetteville St. Telephones Office L-2541 Res. L-8621
- DOCTOR J. M. HUBBARD** DENTIST N. C. Mutual Building Office Hours: 9-1 2:30-5:30 Evenings and Sundays by Appointment Telephone J-0891
- ELLIS E. TONEY, M. D.** 288 Hillsboro Street Oxford, North Carolina Telephones Office 445 Res. 932

**Complete BUILDING SERVICE**  
\*\*\*\*REMODELING  
\*\*\*\*NEW CONSTRUCTION  
\*\*\*\*ROOFING SERVICE  
\*\*\*\*BUILDING SUPPLIES  
Estimates Gladly Furnished  
**ROGERS** For Painting, Papering and Decorating we use ROGERS PRODUCTS.  
SMALL PROFIT, LARGE VOLUME ALL WORK GUARANTEED  
We Use Long-Life LOGAN- LONG ASPHALT ROOFING EXCLUSIVELY.  
*Logan Long* ASPHALT SHINGLES  
THIS COMPANY OPERATES ON A VOLUME BASIS  
**Home Modernization and Supply Co.**  
614 Fayetteville St. Durham, N. C. Phone J-4821