

Cheyenne Scout Corner

WHAT IT TAKES TO BE A LEADER

General Mark W. Clark, a distinguished soldier-educator describes the elements involved and tells what we must do to develop them.

General Clark begins with these few questions (1) Where does juvenile delinquency begin? They begin in leaderless families. (2) Where do slums fester? In leaderless cities. (3) Which armies falter, which political parties fail? Poorly led ones.

Clark claims that the art of leading can be taught and it can be mastered. He lists the following that seem to bring fundamentally (1) Confidence; If a leader does not believe in himself, no one else will. (2) Energy; a leader must be willing to do everything he asks of his followers -- and more-- He must be able to work harder, concentrate longer, force the extra burden, go the extra danger and the extra mile. Timing -- This is a combination of alertness, imagination and foresight, "no man thinking thoughts born out of time," wrote Woodrow Wilson, "can succeed in leading his generation."

Clarity -- a leader must be able to reason logically, weigh alternatives, make decisions -- and then convey his thoughts lucidly. "The man who can think," said Pericles "and does not know how to express what he thinks is at a level of him who cannot think." (5) Courage, it has been said, is the capacity to hang on five minutes longer. The leader not only must lead, but also inspire it in others. (6) Boldness-- This strong and virile characteristic is akin to courage, but more dynamic, it reveals itself

in a willingness to take chances a readiness to experiment, a soaring optimism that rejects and desires the thought of failure. (7) Concern -- Experience has taught that men will never follow unless they feel that he really cares about them and their problems. (8) Morality -- A stern code of ethics, a strong sense of personal morality, "obedience to the unenforceable (9) Faith -- above all, a leader must believe in his people as well as in the goal toward which he is leading them.

What can we do to improve the climate in which such attributes of leadership develop? The answer is that parents must do it. The job has to be done early and it has to be done at home. Take confidence for example. The seeds of this quality are planted long before a child goes to school. If you really want your child to excel you must search out and encourage areas of interest and aptitude. You must offer guidance, time and involvement. You must be willing to give of yourself, you must see that certain values exist in the home; respect, pride, loyalty honor. A torch must burn as brightly as possible before it is handed on to the next generation.

Let no man think that being a leader is easy. Often it is a lonely and difficult business as Nietzsche said "Life always gets harder toward the summit. The cold increases, the responsibility increases and there is never any guarantee of success." If enough of us understand this and live by it, the future of our nation will be secure.

THE MOVIE SCREEN

THE "GODFATHER", A NORTHERN "GONE WITH THE WIND"

By JOHN MYERS

"The Godfather" starring Marlon Brando, is a northern "Gone With the Wind." It is the classic gangster picture of which James Cagney would be proud. To refer to Brando's action in any terms less than magnificent would be slander. "The Godfather" is possibly Brando's greatest role in a life filled with great roles. He is superb. The supporting cast is no less spectacular. Photography, sets, props, acting, music score, dialogue, all rate triple A's. The movie is a must for lovers of realism and historical data.

Now that I have given the reviewers the standard statements about a great movie, I want to dig deeper into "The Godfather". It is a film of character study, and in so being, surpasses any depth I have ever seen a film achieve in this most difficult task. Brando's impersonation of Vito Corleone, Don of the Mafia, is astounding. He brings the man to life with the realism of a great actor. The viewers are taken into the heart and soul of a man who lets nothing stand in his way of achieving what he wants and lets them understand why he lives as he does and how he succeeds in his plans. One becomes lost in gangland wars, in ritual murders, and of all things, in tenderness on the home front.

A second part of the story is centered around the Don's son, Michael, who has never taken part in the family business. He is a college graduate a war hero, the one man in the Corleone family who is not interested and does not want to get involved with its business. The film shows its viewers how and why Michael must accept his birth. He is brought face to face with the fact that if he is to survive and be permitted to life and love as any other man, he must protect his life and his loved ones in the only manner he can, by being head of the family. His acceptance comes promptly and swiftly. He accepts his fate and goes on to

become the Don.

The Godfather is a grusom, violent motion picture that is not for the weak at heart. Its violent scenes of which there are many, are expressions of realism that will shiver the spine. On the other hand, its awareness of being in the existing world is spectacular. It does not try to hide the fact of murder, but rather shows the viewer why, in a world such as these men lived, there was no turning back. It was truly kill or be killed.

One would like to think that the days of the Godfather are over. That they are a part of our historical past. But one must realize that they are not. The days of violence have calmed somewhat from 1940's but they, indeed, still exist. One seeing this film will gain an insight of the knowledge that the days of the Godfather will never completely over.

DISNEY GENIUS

Walt Disney World in Florida is the showcase for Disney's "Audio-Animatronics." This technique combines lifelike sounds and actions in three-dimensional animated figures. Used in the Pepsi-Cola/Frito-Lay "Country Bear Jamboree" in Frontierland, the sophisticated electronics animates guitar plucking, down-home-singing grizzlies.

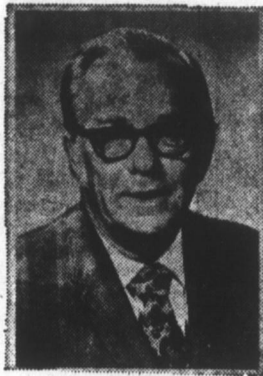
GRRROWL!

Music with a country/western twang, is moving them in metropolitan. Even city slickers now appreciate its down-home flavor. But the newest bluegrass band hails from deep in the heart of Florida. They grrowl their songs at the "Country Bear Jamboree" in Frontierland, at Walt Disney World. The Pepsi-Cola/Frito-Lay show in Grizzly Hall stars 20 guitar-plucking bears wailing such tunes as "Blood On the Saddle." A special Disney technique combines lifelike sounds and actions in three-dimensional animated figures to bring the bears to life.

Stomach Upset by Gas and Acid?

Di-Gel with Simethicone quickly relieves gassy-acid upset.

This unique discovery breaks up and removes painful gas-bubbles. Your relief is more complete because Di-Gel takes the acid and the gas out of acid indigestion. When you eat too well, demand Di-Gel. Tablets, liquid. Product of Plough, Inc.



Stewart Rigsbee President



J. D. Brothers Operations Manager



Buddy Lynam General Manager



Charlie Rigsbee General Manager West Durham Branch



Bob Salmon Sales Manager West Durham Branch



Jim Pipkin Sales Manager Lakewood Avenue Branch

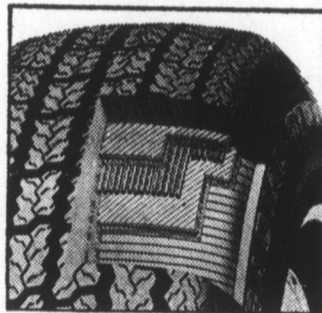
HANDLING

The Lifesaver Radial Steel R/S handles well in all driving situations. In cornering, it's superb. Under matched test conditions on a wet skid pad, the R/S holds the curve while the all-steel belted radial doesn't. Flexible radial sidewalls and belted steel reinforced with Dynacor® Rayon Cord keep the tread flat against the pavement surface. To grip roads. To cut chances of losing control.

Radials are the best tires in the world. And in our judgement B. F. Goodrich makes the best radials. Including the Lifesaver Radial Steel R/S, the first radial in the world made with Cushioned Steel construction. Steel for strength and durability. Cushioned for a luxury ride never before possible with a steel-belted radial. The Lifesaver R/S. From B. F. Goodrich, America's premier radial tire maker ... and now at Rigsbee Tire Sales.

In keeping with our long-time tradition of offering our customers the ultimate in tires . . .

Rigsbee Tire Sales NOW OFFERS YOU B.F. Goodrich Lifesaver® Radial Steel R/S with Cushioned Steel™



Steel for strength and durability

Cushioned for quiet and comfort

Guaranteed for 40,000 miles

In normal driving, you'll get at least 40,000 miles of treadwear from the Lifesaver Radials on your car. If you don't get 40,000 miles, take the guarantee back to your BFG retailer. He'll allow you credit for the difference toward the going trade-in price of new ones. And add a small service charge.

LIFESAVER RADIAL STEEL R/S

It gives you everything you could possibly want in a tire.

SAFETY

Radial construction means less friction for cooler running and reduces tire failure. A tough belt of steel cushioned between double layers of Dynacor® Rayon Cord makes flats and road hazards virtually a thing of the past. The wide stable tread grips the road, adheres to the road--to cut your stopping distance to a minimum.

RIDE

Something no tire has ever had before. Our exclusive Cushioned Steel construction makes the Lifesaver R/S unique: a tough belt of steel cushioned between double layers of pliable Dynacor® Rayon Cord. Typical steel-belted radials have the steel but no cushion. Typical textile-belted radials have the cushion but no steel. B. F. Goodrich combines the best of both into the world's first radial with Cushioned Steel. You get strength you'd expect, comfort you don't expect.

You can be assured that Rigsbee Tire Sales will back up every tire we sell with the very best of service. We offer you the latest in tire conditioning and balancing equipment to assure you of a perfectly smooth ride.

Stop by today and let our tire experts review this tire with you.

MILEAGE

Reduces tread squirm and friction, the main cause of heat build-up which causes tires to wear faster. We've had reports of 50,000, even 60,000 miles on our Lifesaver and we'll guarantee you at least 40,000 miles--in writing.

SAVINGS

The firm tread has less rolling resistance, providing up to 10% better gas mileage than conventional bias ply tires. This can mean a savings of almost .03* a gallon.



Use Rigsbee Tire Sales Budget Payment Plan or Favorite Bank Charge Card.

STEWART RIGSBEE—J. D. BROTHERS

RIGSBEE TIRE SALES

Hours: Monday thru Thursday 8 a.m. to 6 p.m.—Friday 8 to 8

2720 Hillsborough Road, Ph. 286-4444

108 Lakewood Ave., Ph. 688-1383