

**BIMBE 1981**

This year's Bimbe Festival appeared to attract the largest crowd ever. Thousands of people from throughout the area enjoyed the day's activities.



A little girl seems a bit worn by the day's activities but continued to munch on her late afternoon snack.



The Chuck Davis Dance Company entertained a very large audience in the evening.



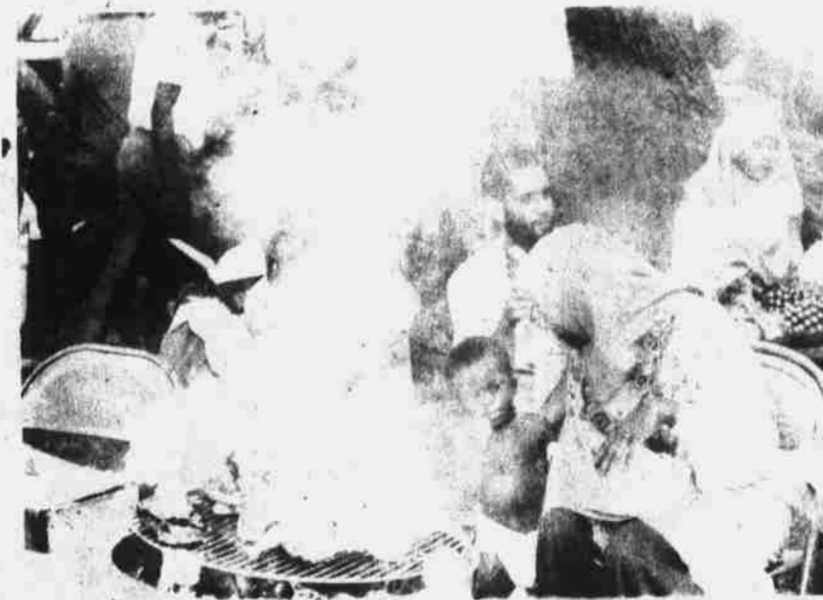
One of the major attractions at the festival was a variety of food from which to choose. Here Mwata Hester prepares more fish to feed the masses.



Having trained long and hard, the Weaver Street Community Dancers joined with the Chuck Davis Dance Company for a very special treat.



Another feature of the festival was a variety of crafts. In this case various objects made from ordinary clothes pins.



A time of relaxing, remembering old times and enjoying the company of family and friends, old and new.



Those who braved the heat had an opportunity to cool off with snow cones served by Muslim women.



Children enjoying the company of each other.



**ADVERTISED ITEM POLICY** Each of these advertised items is required to be readily available for sale at or below the advertised price in each A&P Store, except as specifically noted in this ad.

PRICES EFFECTIVE THRU SAT. AUGUST 1 AT A&P IN DURHAM  
ITEMS OFFERED FOR SALE NOT AVAILABLE TO OTHER RETAIL DEALERS OR WHOLESALERS

**320 University Dr.** 1109 E. Main St. **3438 Hillsborough Rd.** 621 Broad St.

**SPECTACULAR SUMMER GREEN P SAVINGS**

*The Butcher Shop*  
with supermarket prices  
A&P QUALITY HEAVY WESTERN GRAIN FED BEEF  
Cut Free Into Bottom Round Roast, Steaks, Boneless Eye Round Roast and Steaks, Ground Round 20 To 26 Lb. Avg. Wt. **167** lb.

U.S.D.A. INSPECTED FRESH  
**Whole Fryer Legs** lb. **68¢**

MENU MAKER (25% Less Fat Than Regular Ground Beef)  
**Ground Beef Blend** 3 lb. Roll Pkg. **99¢** lb.

A&P QUALITY HEAVY WESTERN GRAIN FED BEEF  
**Boneless Bottom Round Roast** lb. **198**

*Great Grocery Savings*  
ANN PAGE  
A SUPERB BLEND, RICH IN BRAZILIAN COFFEES  
**Eight O'Clock** 1-lb. bag **179**  
Bean Coffee  
Regular or Rippled 8 oz. twin pack **79¢**

FROZEN **Totino's Pizza** 12 oz. pkg. **109**  
• Canadian Bacon  
• Pepperoni  
• Hamburger  
• Sausage  
ANN PAGE  
**2% LOWFAT MILK** Gallon Jug **183**

FROZEN **Ann Page Dinners** 11 oz. pkg. **59¢**  
• Salisbury Steak  
• Meat Loaf  
• Chicken  
• Turkey  
IN QUARTERS **Shedd's Spread** 1-lb. pkgs. **100**

ANN PAGE CHILLED **Orange Juice** ½ gal. ctn. **109**  
ICE CREAM PARLOR TASTE **Sealtest Ice Cream** ½ gal. ctn. **189** Save 76¢

DECORATED - ARTS 'N FLOWERS **Scottowels** big roll **69¢**  
PEPSI-COLA 8 Pkg. 16 Oz. **149**

**THE FARM** AT A&P FRESH WITH QUALITY  
EASTERN GROWN SWEET **Yellow Corn** 8 large untrimmed ears **100**

GOLDEN YELLOW RIPE **Dole Bananas** 3 lbs. only **100**  
NEW JERSEY GROWN **Blueberries** pint box **99¢**