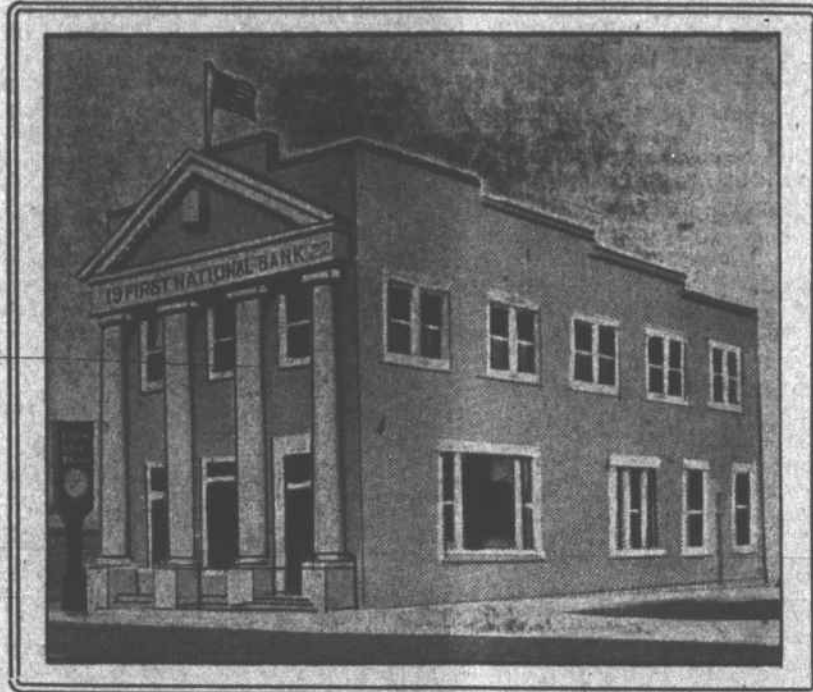


The Bank For The Farmer

CAPITAL

\$100,000.00

Strongest and Largest Capilized Bank in Hertford, Northampton, Bertie, Gates, Camden and Currituck Counties.



RESOURCES

1919--\$88,000.00
1920---\$128,000.00
1921---\$260,000.00
1922---\$370,000.00

Are We Growing?

Join our hundreds of satisfied customers and grow with us.

We Took Care of All Our Customers During the Hard Times in 1920-21 at 6 Per Cent Interest.

Bring Us Your War Savings Stamps and Liberty Bonds---We Will Give You Face Value for Them.

We Offer every service and accommodation consistent with sound banking. Your account with this Bank is insured by the regulation and supervision of the Federal Government.

We are making long time Farm Loans at 6 per cent interest through our associated bank--The Virginia Carolina Joint Stock Land Bank of Elizabeth City, N. C. We are making Loans---Not Promises.

BANK BY MAIL. It matters not where you live you can bank with us by mail. Once you become a customer of this strong and growing National Bank no one can persuade you to change.

The Bank That Serves to Please

FIRST NATIONAL BANK

Member Federal Reserve System

MURFREESBORO, - - - - - N. C.

J. A. CAMPBELL, President

J. J. WHITE, Vice-President
B. FERGUSON, Vice-President

CHAS. R. STOREY, Cashier
GEO. H. CAMPBELL, Asst. Cashier