

### Pains Were Terrific

Read how Mrs. Albert Gregory, of R. F. D. No. 1, Bluffton, S. C., got rid of her ills. "During . . . I was awfully weak . . . My pains were terrific. I thought I would die. The bearing-down pains were actually so severe I could not stand the pressure of my hands on the lower part of my stomach. . . . I simply felt as if life was for but a short time. My husband was worried. . . . One evening, while reading the Birthday Almanac, he came across a case similar to mine, and went straight for some Cardui for me to try.

### TAKE CARDUI

The Woman's Tonic

"I look it faithfully and the results were immediate," adds Mrs. Gregory. "I continued to get better, all my ills left me, and I went through . . . with no further trouble. My baby was fat and strong, and myself—thank God—am once more hale and hearty, can walk miles, do my work, though 44 years old, feel like a new person. All I owe to Cardui." For many years Cardui has been found helpful in building up the system when run down by disorders peculiar to women.

### Take Cardui

QUEEN LAUBS Y. W. C. A.

A cable recently received at Y. W. C. A. headquarters, New York city, and sent from Bucharest, Roumania, expresses from Queen Marie her desire that the work begun by the Y. W. C. A. in her country be continued. The queen deeply appreciates efforts already made in helping her to rebuild her country and is firmly convinced that the Y. W. C. A. is of paramount importance to her people.

### EVER NOTICED THIS.

"Queer, isn't it?"  
"What?"  
"A man always has to do something like golf or tennis or rowing for exercise. He never seems to be able to get any exercise out of his work."

### JAPANESE ENTERPRISE.

Two new Portland cement factories are to be built at Kawanaki and Hokkaido, Japan, at a cost of about \$2,000,000.

### FANCY TOY.

Among the new scientific toys is one which transmits pictures electrically, using the same principles as are applied to telephotography.

### THAT IS SAFE.

"Anyhow there's one book in my library none of my friends ever asks to borrow."  
"What is it?"  
"The Bible."

### SOULFUL PLEA.

Stranger (at the bar)—Slip me a shot, won't you?  
Barkeep—You may be a dry agent for all I know.  
Stranger—Nobody knows how dry I am!—Buffalo Express.

Very Much So.  
"This unfortunate collision sent my whole stock of eggs down the hill."  
"Too bad. What you might call a depreciation in rolling stock."  
A slight compensation.  
"A hen in these times can't be well roasted."  
"But he can't be stewed."

## NEW RECORD SET FOR MOVING CARS

RAILWAYS OF SOUTH ARE NOW HANDLING MORE FREIGHT THAN EVER BEFORE

### COMMERCE AT HIGH TIDE

Number of Cars Loaded in July and August Shows Increase Over 1919 and 1918

Washington, D. C.—All records have been broken by the railways of the South in the movement of the high tide of commerce that continues throughout the territory served by them, according to figures, covering the movement of cars of commercial freight loaded during the six weeks period from July eleventh to August twenty-first, announced today by the Car Service Commission of the American Railroad Association.

During each week of the six weeks' period there were loaded at stations on the railways of the South more cars of commercial freight than were loaded during the corresponding week of either nineteen nineteen or nineteen eighteen. The total number of cars loaded during the six weeks this year was 795,397 as against 716,294 for the same period in 1919 and 737,904 in 1918 when every nerve was strained to move the traffic incident to the war.

During the week ended August twenty-first there were loaded 137,937 cars at stations on the railways of the South as against 126,997 cars for the same week in 1919 and 124,175 cars for the same week in 1918.

During the first three weeks of August this year the total number of

cars loaded on the railways of the South was 416,940 while during the last three weeks of July the number loaded was 378,457, showing an increase of 38,483 or over 12,000 cars per week for August over July, indicating a progressive improvement for this week as well as increases over last year and the year before.

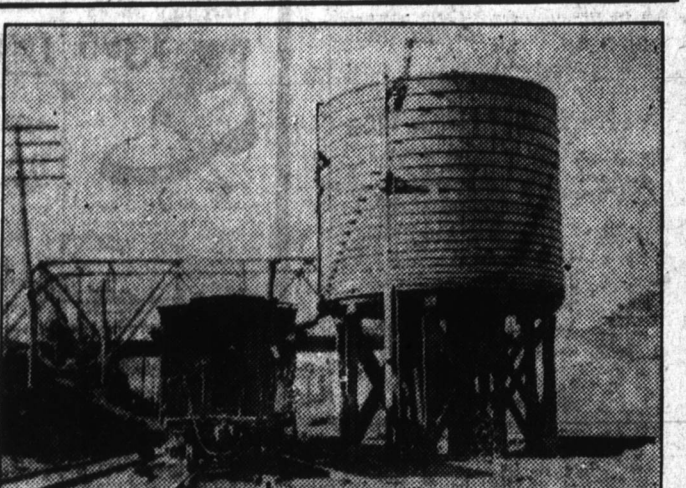
### RAILROADS ARE PAYING TREMENDOUS INCREASES FOR LABOR AND MATERIAL

From 1910 to May, 1918, freight rates decreased 4 per cent. From May, 1918, to December, 1919, freight rates increased 25 per cent.

From December, 1914, to December, 1919, the cost of material, equipment, and labor used by railroads increased tremendously. The following will illustrate this fact:

	Per Cent.
Milk & d.o locomotives increased in cost	183
Fifty-ton box cars increased in cost	171
Steel tank cars increased in cost	171
Steel rails, per ton, increased in cost	61
Cross ties, per tie, increased in cost	106
Creosoted bridge material increased in cost	82 to 124
Cypress stringers increased in cost	114
Cypress lumber increased in cost	150
Fuel increased in cost	118
Other material advanced during the 5-year period from	50 to 500
Labor increased in cost	43 to 149

## How the H. C. L. Hits the Railways



In 1912 the water tank shown herewith was installed at Raleigh, N. C., by the Southern Railway at a cost of \$1,592.00. To construct a similar tank in 1920 would cost \$3,400.00. In the same picture is shown a caboose which was built in 1913 at a cost of \$1,600.00. In 1920 the same caboose would cost \$3,840.00. To the right of the caboose and just in front of the tank is shown a two-armed mechanical signal tower which was installed in 1916. It cost \$281.00 then, but to reproduce it in 1920 would cost \$650.00.

## RAILWAY WAGE AND RATE INCREASES

### What Becomes of the Revenue Derived From Recent Advances in Railway Rates

Since the recent order of the Interstate Commerce Commission, authorizing the railways of the country to advance freight rates and passenger fares, came only a few days after the award of the Railway Labor Board, giving increased wages to certain classes of railway labor, there has been a tendency in some quarters to confuse the two. A few days ago a Southern editor was asked: "If the railway employees receive an increase in wages amounting to \$625,000,000 and rates are advanced so as to yield \$1,500,000,000.00 what becomes of the difference?"

The difference goes to help the railways meet previous increases in wages which were granted by the United States Railroad Administration, to pay increased prices for fuel, cross-ties, bridge timber, steel rails and other materials of which the railways use large quantities and, after paying these increased costs, to yield a fair return on the value of the railway property, devoted to transportation purposes. Such a return is absolutely necessary if the railways are to be able to attract new capital. This must be had to provide the additional facilities which are badly needed to country over, but particularly in the South where there has been such a great increase in commercial activity.

The petition of the railways for increased rates was filed in May, long before the award of the Labor Board, and showed that at that time many railways were not earning their operating expenses. After the award of the Labor Board was announced, the railways filed a supplemental petition asking further increases to meet the additional expense and the decision of the Commission was rendered after considering both petitions.

### That Six Per Cent Return

In many quarters there seems to remain some misunderstanding as to the provision of the Transportation Act of 1920 which makes it the duty of the Interstate Commerce Commission to authorize rates which will give the railways of each section of the country a fair return on the value of their property, devoted to transportation purposes, and, for the two years following the passage of the Act, set the "reasonable return" at 5.12 percent with another 1.2 percent, to be devoted to improvements, at the option of the Commission.

Some persons have gotten the idea that the Transportation Act guarantees the railway companies six percent on their stocks and bonds. The fact is that the Act says nothing about any return on capitalization and no railway is guaranteed anything. The volume of stocks and bonds which any railway company may have outstanding will have absolutely no effect on the return it will receive.

While the Act makes it the duty of the Commission to authorize rates which will give the railways of each section an aggregate fair return on the aggregate value of their property, there is no assurance that any individual railway will get a return of six percent on the value of its property, or any return at all. What it will get will depend on the business it secures and the efficiency with which that business is handled.

Under the new rates, if a railway earns more than six percent, it must divide the surplus with the government; if it earns less than six percent or loses nothing at all, the loss falls on its owners.

## Sale Under Deed of Trust.

Under and by virtue of the power of sale contained in a certain deed of trust executed the 25th day of September, 1919, by J. A. Small and wife, to the undersigned Graham Loan & Trust Company, Trustee, for the purpose of securing certain bonds of even date therewith and the interest thereon, which deed of trust is duly probated and recorded in the office of the Register of Deeds for Alamance County, in Book of Mortgages and Deeds of Trust No. 84 at page 46, default having been made in the payment of said bonds according to their tenor, the undersigned trustee will, on

MONDAY, DEC. 6th, 1920,

at 12 o'clock, noon, at the court house door of Alamance county, at Graham, N. C., offer for sale at public auction to the highest bidder for cash, two certain tracts or parcels of land in Patterson township, Alamance county and State of North Carolina, adjoining the lands of Samuel C. Clipp and others and bounded as follows: Tract No. 1. Beginning at a stone near mill race and running thence N 61 deg E 14.22 poles to a stone on the S side of mill road, thence N 20 deg E 4.21 poles to a stone; thence S 87 deg E 18 poles to a sycamore tree on the E bank of Rock Creek; thence 11 deg E 5 poles to a sycamore on E side of said creek; thence S 50 deg W 8 poles to a large sycamore near the E end of mill house; thence S 23 deg W 6 poles to a stone on the E end of mill race; thence S 23 deg E 6 poles to a stone at or near the N end of mill-dam; thence up the pond at high-water mark with the various courses of the said pond to the head of the same; thence across the creek N and down the pond at high-water mark with the various courses to the beginning, containing 12 acres by the McMath plat, be the same more or less, on lot No. 1 in the division of said lands and known as Coble's Mill.

Tract No. 2. Adjoining the lands of J. G. Montgomery, Bloss Browning, Mrs. Durham, and others, and bounded as follows: Beginning at a rock on said Montgomery line, corner with said Browning, and running thence N 3 1-3 deg W 1.50 chains to a rock of iron bar, corner with said Browning; thence with his line S 86 deg E 1.90 chains to a rock, corner with said Browning in said company's line; thence N 3 1-3 deg W 2.35 chains to a rock in said line, corner with said Durham; thence with her line West 3.90 chs to a rock corner with said Mrs. Durham; thence S 3 1-3 deg E. 3.58 chs to a rock on said Montgomery's line; thence S 86 deg E. 2.01 chs to the beginning and containing 1.25 acres, more or less, and on which there is a frame dwelling.

This October 29th, 1920. GRAHAM LOAN & TRUST CO., Trustee.

Wm. I. Ward, Att'y.

Break your Cold or LaGrippe with few doses of 666

### He Could Have Been.

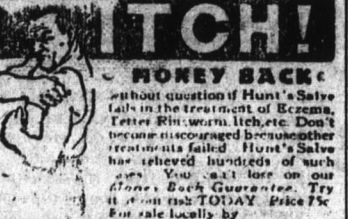
Mr. A. is a very enthusiastic lodge man, spending about five nights out of every seven at various lodge rooms — all of which lodges he is a member. His wife, who is rather tolerant of the whole business, however, does occasionally get peeved enough to say a few sarcastic things. And the other night came her chance. For a wonder, her husband was at home for an evening, curled up in a rocking chair before the grate fire and reading busily. For a long time she sat silently watching him, then she asked, "John, what are you reading?" "My ritual," he answered. "Well, I must say," she remarked with some spirit, "if you had studied your marriage vows as much as you have studied that ritual you would be a model husband."

### Citrus Powders.

Announcement is made of the discovery of a successful process for reducing orange juice and lemon juice to dry powders, the method adopted being much like that employed for the production of powdered milk. Dry air, that has not too high a temperature, evaporates the juices to dryness, thus preserving the fresh flavor. When wanted for use, it is necessary merely to add water.

### TRY IT OUT, LADIES.

Wife—I made a terrible hit at the club this afternoon.  
Hubby—Make a speech?  
Wife—No, but I wore my dress that I just had cleaned and the odor of gasoline was so prevalent that everybody thought we had a car. We'll have to get one now, dear.



GRAHAM DRUG COMPANY, GRAHAM, N. C.

## Sunmons by Publication

NORTH CAROLINA—ALAMANCE COUNTY. In the Superior Court,

Minnie Hill, Plaintiff, vs. John Hill, Defendant.

The defendant above named will take notice that an action entitled as above has been commenced in the Superior Court of Alamance county, to obtain absolute divorce; and the said defendant will further take notice that he is required to appear before the Clerk of the Superior Court for the county of Alamance at his office at the court house in Graham, North Carolina, on the 8th day of December, 1920, and answer or demur to the complaint of the plaintiff, which will be deposited in the office of the said Clerk of the Superior Court of the said county on or before the return day of this summons, or the plaintiff will apply to the Court for the relief demanded in said complaint.

This the 3rd day of Nov., 1920. D. J. WALKER, G. S. C. 4nov4t Wm. I. Ward, Atty.

## Kill That Cold With HILL'S CASCARA QUININE

FOR Colds, Coughs, La Grippe AND La Grippe

Neglected Colds are Dangerous  
Take no chances. Keep this standard remedy handy for the first sneeze.  
Breaks up a cold in 24 hours—Relieves Grippe in 3 days—Excellent for Headache  
Quinine in this form does not affect the head—Cascara is best Tonic Laxative—No Opium in Hill's.

### ALL DRUGGISTS SELL IT

"Felt Like Eating"  
Man and Wife, All Run-Down from Farm Work, Were Greatly Helped by Ziron.

"MY WIFE and I, after a hard spring on the farm, were tired and run-down," says Mr. E. B. Mulkey, of Route 1, Acworth, Ga. "We neither felt well. I knew my blood was bad, as I had little boils on the back of my neck. . . . We felt we needed a builder. We had heard of Ziron and thought it must be what we needed. It certainly was. We took it faithfully, and after a week or such a matter we began to feel better. My wife felt like eating, and I sure felt like eating. . . . Ziron sure did us good. It made us both feel stronger and better for the fall work, which everyone knows is 'home work' on a farm. My boils began to dry up, though just as they seemed worse. . . . We are much better and can highly recommend Ziron, and gladly do so for it sure did us good." Ziron is a safe, reliable, tonic medicine, good for men, women and children, when an iron tonic is indicated. It is easy to take and contains no habit-forming drugs. Ask your druggist for Ziron.

## Children Cry for Fletcher's CASTORIA

The Kind You Have Always Bought, and which has been in use for over 30 years, has borne the signature of Dr. J. C. Fletcher and has been made under his personal supervision since its infancy. Allow no one to deceive you in this. All Counterfeits, Imitations and "Just-as-good" are but experiments that trifle with and endanger the health of Infants and Children—Experience against Experiment.

### What is CASTORIA

Castoria is a harmless substitute for Castor Oil, Paregoric, Drops and Soothing Syrup. It is pleasant. It contains neither Opium, Morphine nor other narcotic substance. Its age is its guarantee. For more than thirty years it has been in constant use for the relief of Constipation, Flatulency, Wind, Colic and Diarrhoea; allaying Feverishness arising therefrom, and by regulating the Stomach and Bowels, aids the assimilation of Food; giving healthy and natural sleep. The Children's Panacea—The Mother's Friend.

GENUINE CASTORIA ALWAYS Bears the Signature of

Chas. H. Fletcher  
In Use For Over 30 Years  
The Kind You Have Always Bought  
THE CENTAUR COMPANY, NEW YORK CITY.

## THE FAR-REACHING EFFECTS OF BLOOD DISORDERS

Pimples, Rash, Itching etc., the First Signs—New Form of Iron Clears the Skin and Brings Positive Benefit Quickly

It is impossible to estimate the extent to which human ills and disease owe their origin to disordered and impure blood. Think of the various forms of Kidney ailments that have their origin in diseased blood conditions. And no one questions that Rheumatism starts in blood. So it is important to watch the blood and to begin treatment at the first signs of disorder. By taking such troubles in time and through persistent attention, harmful results and much suffering can be avoided. Nearly everyone is familiar with the so-called blood disorders as evidenced by pimples, rash, itching, etc. It is not important whether these symptoms indicate eczema, salt rheum, scrofula, etc., but it is vitally imperative that the blood be given treatment to make it healthy. There should not be an instant's delay in doing this. And the disfiguring effects produced by these blood impurities are embarrassing to the sufferer. A remedy should be used which not only drives the impurities out of the blood but which will at the same time remove every trace of pimple, rash and "breaking out." A positive and quick treatment for these blood disorders is supplied by Acid Iron Mineral—a new form of liquid iron. Its first function is to strengthen and purify the blood by putting iron into it. Thus impurities are driven out and the blood is enriched—the whole system is strengthened—the skin is made clear and free from blemish, perfect health throughout the body is established. Druggists will refund the purchase price of Acid Iron Mineral if it fails to give you satisfaction—it contains no alcohol or injurious drugs.

For Sale by All Good Druggists. Burwell & Dunn and John M. Scott & Co., Charlotte, N. C., Distributors.

## THE PIEDMONT POWER & LIGHT CO. AND THE ALAMANCE RAILWAY CO.

ARE YOUR PUBLIC UTILITIES

Back them both up by your patronage or they cannot help to build your community

Burlington, Graham, Haw River, Mebane, Elon College, Gibsonville.

Subscribe for The Gleaner \$1.00 a year—in advance.