

## The Beauty of the New Dresses

Beautifully fashioned from the season's most favored fabrics in styles that have won the approval of style leaders everywhere, these Dresses are representatively smart for wear on any occasion.

Then, too, there is the economy of buying them ready to wear, for the cost is but little more than you would have to pay for the material and findings alone.

### A. S. WIGGS

NASH STREET

LOUISBURG, N. C.

### INSURANCE A NECESSITY

INSURANCE ACTUALLY DEALS WITH EVERY HONEST BUSINESS UNDER THE SUN

Fire insurance has come to be not only a householder's security, but a national necessity. The home owner must protect his family and provide shelter; the renter must guard his household goods. Business concerns, factories, churches, schools, colleges and corporations must protect their property investments. The man who can thus provide the security of a community against financial loss from fire is its insurance agent, through his companies.

See **T. W. WATSON**, for your Insurance Needs.

OFFICE OVER THE FIRST NATIONAL BANK

## New Garden Seed

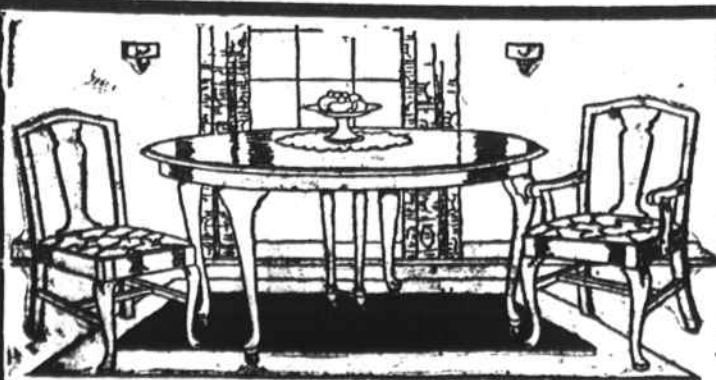
I have just received a large shipment of Woods Garden Seed, which I am selling for a low price. Come to see me. I can save you 15 per cent on your prescriptions.

### F. R. Pleasants

DRUGGIST

TELEPHONE 222-J.

LOUISBURG, N. C.



### Specially Priced Dining Sets

Sturdy construction and serviceable finishes emphasize the importance of choosing one of these sets for your home, while prices are so very attractive as now.

Our extended payment plan may be used, if desired, even though the prices are much less than regular.

### W. E. White Furniture Co.

### GROW ASPARAGUS TIPS IN THE HOME GARDEN

Raleigh, N. C., May 5.—Asparagus is not well known as a home garden vegetable in North Carolina, even though it is possible to grow the crop easily and successfully. The bed requires very little attention after it has once been started and those who have a good sandy loam soil in the garden spot may grow the crop to advantage. The soil needs to be well enriched and deeply dug however.

Specific directions for having an asparagus bed are given by R. F. Wayne, extension horticulturist for the State College of Agriculture, who says: "The soil should be well manured the previous season and well fertilized when the bed is set. After the bed is established, the fertilizer should be applied after the cutting season, using 1,000 to 1,500 pounds per acre of a fertilizer analyzing 2 to 4 percent nitrogen, 6 to 8 percent phosphoric acid, and 6 to 8 percent potash in the form of muriate of potash.

"The best variety of asparagus is Martha Washington as it is rust resistant. Palmetto and Argenteuil are two varieties widely grown.

"Asparagus can be propagated from the seed, but the easiest plan is to buy one-year old root stocks from some reliable seedsmen. These can be set out either in the spring or fall. Place these root stocks in rows 5 to 8 feet apart and 1-2 to 2-2 feet apart in the row being placed horizontally in the bottom of a 10 inch furrow and covered up 2 to 3 inches and gradually filled in. The ground should be cultivated from early in the spring until cutting time. Later the weeds should be kept down.

"The tips should not be cut until the third season and then only for three weeks. After this it can be cut for the entire season, about 10 weeks. If white tops are desired, cut the shoots several inches below the surface of the soil when they appear. The green tips are cut just a little beneath the surface."

### EXAMINE YOUNG COTTON PLANTS

(By Keaton Arnett)  
(For the National Boll Weevil Control Association.)

New Orleans, La., April 30.—While a thorough investigation of young cotton plants by farmers to determine the proper time for pre-square poisoning is urged it is not considered necessary that every plant on every acre in a field be examined. By selecting several rows in various parts of the field for examination it is believed that the degree of infestation can be determined with sufficient accuracy.

However, a most minute examination of the plants in these rows should be made and to do this it will be necessary for the farmer to get down on his knees and look over every portion of the plant. This operation should be repeated daily until it is determined



### RED SEAL LYE

Ideal for Cleaning Grimy Walls, Steps and Floors

DON'T take chances with stored vegetables and preserves in the cellar "cold" room. Wash walls and floors with Red Seal Lye solution. This powerful disinfectant prevents mold and fermentation and keeps the storage room clean and sanitary.



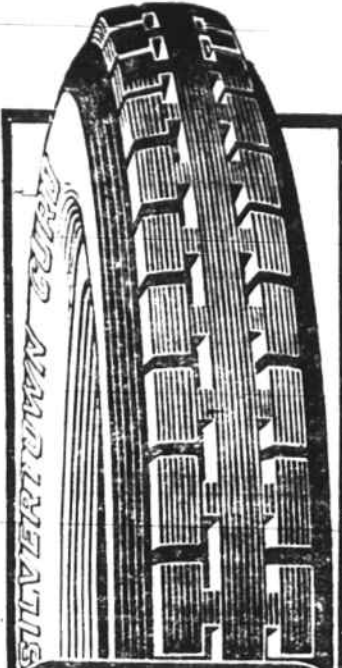
### HOUSEHOLD HINTS

Things Our Readers Want to Know

When plumbing becomes clogged, the quickest and best way of clearing it is to sift some Red Seal Lye into the outlet. This frees the obstructing material almost instantly.

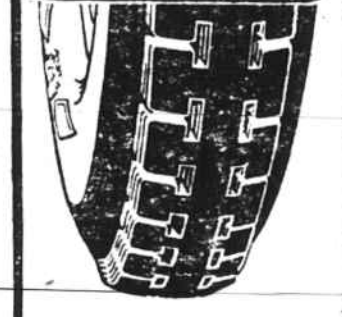
Much unnecessary labor may be saved on wash-day by softening the wash-water with Red Seal Lye. This serves to loosen the dirt from the clothes without the usual hours of laborious rubbing.

Pots and pans (except those made of aluminum) will let go their dirt and grease more quickly if Red Seal Lye is used as a cleanser.



Silvertown means—highest quality, low cost, long service, —and finally—Tremendous satisfaction.

### Goodrich Silvertown CORD



L. P. Hicks  
Louisburg Motor Company

"BEST IN THE LONG RUN"

that there are as many as twenty boll weevils to the acre. Poisoning should begin at this stage.

Equal effect has been obtained with calcium arsenate in dust form and the calcium arsenate-molasses mixture at this stage, according to the reports of state experiment stations, but farmers should not confuse the recommendation for use of the liquid mixture in the pre-square stage with the recommendations for late season poisoning. Calcium arsenate in dust form only is found to be the most effective after squares have formed.

At this stage calcium arsenate may be applied either by cotton dusting machines or may be shaken on the plants from a bag. The mixture, which should be composed of one pound of calcium arsenate, one gallon of molasses and one gallon of water, may be applied to the tips of the plants where the weevils feed by sprinkling a few drops from a home made mop. About one gallon of the mixture should be used to the acre.

Further information on boll weevil control may be obtained from the county agent, state college of agriculture or the National Boll Weevil Control Association, Room 220 Whitney Building, New Orleans, La.

FOR FIRST CLASS JOB PRINTING  
PHONE 283

OVER 40 PEOPLE  
KILLED

and millions of dollars property damage by wind storms in South Carolina and North Carolina.

Storm Insurance is cheap  
Get our rates, on Storm, Fire, Life, Health and Accident Insurance.

THE  
FRANKLIN INS. AND  
REALTY CO.  
Bennett Perry  
Manager.

## The Kind of Chickens To Keep



Strong, healthy, vigorous hens with short, neat heads and strong beaks.

The hens with long, deep, rectangular bodies and parallel top and bottom lines.

The hens with large, bright eyes, active appearance and short, well-worn toenails.

The hens with dusty, worn feathers, especially worn tail feathers, but having a bright, healthy look.

The hens that molt late and those that molt rapidly.

The noisy, happy, friendly hens.

The early risers and those late to roost.

The vigorous hens with the faded beaks and shanks.

The hens with the thin pelvic bones spread wide apart.

The early-hatched, well-grown pullets.

Large, strong, active, quick maturing cockerels of desired variety type and high producing mothers.



TESTED QUALITY

When buying anything in Drugs, quality is a matter of first consideration. We make you certain by insisting that every item we offer you meets our rigid quality standard.

S. P. BODDIE, Receiver  
**Aycock Drug Co.**  
Incorporated

## Balloon Tires

Be sure and try a set Good-years, no better made. We make the price right (no gyp stock). We still have all sizes at old prices,

**Cranford Motor Comp'y.**