

PENDER'S YELLOW FRONT STORES

Tempting Values That Wise Housewives Find Irresistible

Campbells Baked Beans, 3 cans	25c
Blue Label Catsup, Large bot. 27c, small bot. 16c	
Curtice Bros. Jam All Flavors Blue Label Jam Large Jar	22c
Hooker Brand Lye, 3 cans	25c
Eagle Brand Condensed Milk, can	18c
Mission or Colonial Sliced Peaches, No. 1 can 131-2c	
Get a Glider Free with 25 Wrappers of Our Pride BREAD	
Giant 21 Ounce	Wrapped Leaf 10c

D. P. TEA	Land O' Lakes
Orange Pekoe 1-4 lb. 21c	Sweet Cream BUTTER
India Ceylon 1-2 lb. 39c	57c

NOTICE
Having qualified as executor of the estate of Roy Cheaves, deceased late of Franklin County, N. C., notice is hereby given all persons holding claims against said estate to present them to the undersigned on or before the 22nd day of April, 1928, or this notice will be plead in bar of their recovery. All persons indebted to said estate will please come forward and make immediate settlement.
This April 21, 1927.
F. J. BEASLEY, Extr.
E. F. Griffin, Attorney.

One ton of ground limestone used each four years has greatly increased the yield of cotton on the average. Cecil clay soils of piedmont North Carolina.

Subscribe to
THE FRANKLIN TIMES
\$1.00 Per Year In Advance

NOTICE TO CONTRACTORS
On Saturday, June 4th, at 10 a. m., the Board of Education shall receive sealed bids for the construction of a two room Rosenwald school building near the home of John Sills. The blue print and specifications for this building may be seen in the Board of Education's office any day between now and the above date. The right is reserved to accept or reject any or all bids.
E. L. BEST,
Superintendent of Franklin County Schools.

SOYBEANS FOR SALE
Limited quantity Laredo and Mammoth Yellow soy beans and some Tarheel black for sale. Laredo \$4 per bushel, others \$2 per bushel. Write or call H. F. Mitchell, R. 1, Kittrell, N. C. 5-20.31

Subscribe to The Franklin Times.

What FEED does for a MULE and COTTON

AFTER a hard day in the fields, Mr. Mule doesn't hold his ears very high. But give him a good feed—what a powerful difference that makes!

Same way with a cotton plant. Growing uses up its strength and energy. Just about chopping time every cotton plant in your fields needs a good feed.

Side-dress them with 150 to 200 pounds of Nitrate of Soda. Watch those cotton plants of yours pick up, thrive, put on squares and get fruit ahead of the boll weevil. That assures a real crop.

And consider this— an acre of cotton is just thousands of hungry plants. Feed them and they will pay you.

Cotton growers everywhere, practical farmers like yourself, have proved the value of side-dressing with Nitrate of Soda for producing hundreds of pounds of extra cotton over and above the yield they get off of fields not side-dressed.

Side-dressing does great things for corn, too. Do you want that profit paying cotton and corn? The way is easy.

Just cut out this advertisement and write your name and address in the margin. Then mail it to us. We will send you, without one penny of cost, our little book "Side-Dressing Cotton and Corn." Our manager is a practical cotton grower and knows just what conditions call for here in the Old North State.

N. C. 48



**Chilean Nitrate of Soda
Educational Bureau**
220 Professional Bldg., Raleigh, N. C.

TRUETT TO LEAD BAPTIST FORCES

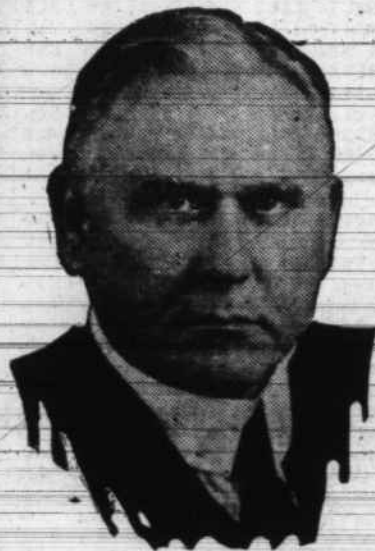
Dallas Pastor Is Unanimous
Choice of Southern Con-
vention for President
This Year

PROGRESS IS REPORTED

Promotional Work of Convention
Continued With Slight Revision
In Personnel—Large Objec-
tive Set

Dr. George W. Truett of Dallas, one of the best known Baptists in the world, was the unanimous choice of the Southern Baptist Convention for president at the recent session at Louisville, and he entered upon his new relationship by challenging the people and churches of his denomination to a deeper spirituality and a fuller consecration to the task of extending God's kingdom in the world.

Despite the fact that the floods in the Mississippi Valley curtailed the year's collections somewhat and the civil war in China halted the operations of the Foreign Mission Board



DR. GEO. W. TRUETT
New President Southern Baptist
Convention

there during much of the year, reports that were gratifying to a large degree were presented by the various agencies and institutions of the Convention.

Missionaries Do Effective Work
The Foreign Mission Board reported 531 American missionaries and 2,644 native helpers in its employ. A total of 12,085 baptisms were had on the foreign fields during the year. Today the Board reports 1,215 churches with 140,488 members and 1,318 Sunday schools with 76,991 pupils on the foreign fields, along with 3,347 preaching stations other than churches, and nine hospitals in which 69,583 patients were treated during the year. The Foreign Mission Board believes order will be restored in China soon and that larger mission opportunities than have ever existed before will soon be presented there.

By the Home Mission Board 923 missionaries were employed during the year. These reported 35,233 additions to the churches, the organization of 168 new churches and 404 new Sunday schools, and the building or repair of 278 houses of worship.

From its current receipts of \$1,806,418.37, the Sunday School Board was able to put \$444,028.41 into general denominational work, while its Educational Department reported 193,145 teacher training awards given to Sunday school workers, and the Architectural Department gave assistance to 1,476 churches in planning their buildings.

Aid in the sum of \$156,252.07 was given to aged or disabled preachers, or dependent members of their families by the Relief and Annuity Board, the total number of beneficiaries carried by the Board now being 1,148.

The promotional work of the Convention for the support of its missionary, educational and benevolent interests was continued, though under the direction of a somewhat different and enlarged personnel. Members of the new executive committee will represent the several states on the promotional body; the state and general secretaries are retained as before; while the editors of the several Baptist state papers are added to this group this year. The total financial objective set by the general states for 1927 is \$8,096,666, and if this amount is realized it is distributable cash it will not approximately \$3,587,000 for the various objects of the Southern Baptist Convention, the remainder going to the various state enterprises of the denomination. Every effort will be put forth to attain this total objective.

Expenses Will Be Controlled
In an effort to bring the fiscal affairs of the Convention into better shape, the Convention voted to establish the policy of budget control, whereby each board and agency of the Convention will be required to bring its expenditures each year within its cash receipts, thus preventing the accumulation of debts.

Indicating the progress in the several churches during the past associational year, the report of the Statistical Department shows 28,009 white Southern Baptist churches with a total of 3,708,263 members; 21,777 Sunday schools with 2,724,367 pupils; 19,775 B. Y. P. U.'s with 488,426 members; 21,640 W. M. U. organizations which made contributions in the sum of \$4,149,883.59; local church property with a valuation of \$184,719,587, and total contributions for the year to all objects in the sum of \$40,106,868.31.



The World's Lowest Priced Cars with Supremely Beautiful FISHER BODIES!

Chevrolet is the only car in its price class offering bodies by Fisher—built as only Fisher can build, and styled as low-priced cars were never styled before!

Bodies by Fisher are everywhere acknowledged to represent the highest order of beauty, luxury, and safety—and never was the superiority of Fisher craftsmanship more evident than in the Most Beautiful Chevrolet.

Despite the lowness of Chevrolet prices, there is not the slightest compromise in design, construction or finish. All embody exactly the principles employed on the highest priced cars—a composite

construction of selected hardwood and steel. All are finished in beautiful colors of lustrous, lasting Duco.

Enhancing the beauty of the bodies themselves are numerous features of distinction previously considered exclusive to the costliest cars—features typified by heavy full-crown, one-piece fenders and bullet-type headlamps.

Only the economies of Chevrolet's great volume production make possible such quality at Chevrolet prices—value so outstanding that comparisons cease to exist. Ask for a demonstration!

The Coach
\$595

The Touring or Roadster	\$525
The Coupe	625
The Sedan	695
The Sport Cabriolet	715
The Landau	745
The Imperial Landau	780
1/2-Ton Truck	395
1-Ton Truck	495

Check Chevrolet
Delivered Prices

They include the lowest handling and financing charges available.

Louisburg Motor Co.

West Nash Street

Louisburg, N. C.

QUALITY AT LOW COST

ALAMANCE FARMERS BUY JERSEY CATTLE

Raleigh May 23.—Alamance farmers have reaffirmed their faith in dairy cattle as one of the best solutions of profits on the farm by buying an additional 119 registered Jersey calves.

About half of these animals went to boys and girls who are members of the calf clubs in the county. According to W. Kerr Scott county agent who purchased the animals, adult farmers bought only 59 while boys and girls bought 60 head. Of this latter number 20 calves went to colored people in the county.

"This new shipment of 119 registered Jerseys, is the largest importation

of pure bred cattle into the county so far," says Mr. Scott. "This proves to me that all of our former shipments have given satisfaction and that our people are finding a profit in the dairy cow. The Ell Whitney community took 30 calves in this last shipment, the Sylvan and Alexander Wilson communities came next while the Alamatah section secured 16 head. These 16 animals were the first to go into that section with the exception of some cows bought by Mrs. Jennie Kernodle last season."

Mr. Scott points out that most of these new purchases were made possible by the friendly attitude of the banks in Alamance county. These institutions helped to finance the young folks especially and those at Burling-

ton are also offering liberal prizes for calf club results in the county this fall. Dr. R. G. McPherson of Saxapahaw and Oliver Clark of Snow Camp probably bought the best two animals paying \$160 each for the calves delivered.

The entire shipment of three cars was very satisfactory, states Mr. Scott. So pleased were the buyers that there is now a demand for another car and Mr. Scott plans to leave on June 27 for another buying trip.

Subscribe to The Franklin Times

Piles Cured in 6 to 14 Days
Druggists refund money if PAZO OINTMENT fails to cure itching, blind, bleeding or protruding Piles. Instantly relieves itching Piles, and you can get restful sleep after first application. 60c.

A REAL STEAK IS RARE

But You Can Always Get One at
CASH GROCERY & MARKET

The same holds true for any other kind of meat—for roasting or boiling—always the same high quality. Tender as can be, tasty and richly flavored, it is the kind of meat you will be more than willing to pay our low prices for.

A Real Pleasure To Fill Your Market Basket Here

You will find it is a real pleasure to buy groceries from us because you know that, first of all, it is not going to cost you any more than it should, and secondly, that whatever you get will have real quality.

Vegetable That Are Good

Careful selection of all Vegetables we have for sale assures you the best and freshest to be had, with the least waste in cooking. Place your next order here as a trial order.

Standard Staples at Best Prices

CASH GROCERY & MARKET

G. W. COBB, Proprietor

WEST NASH STREET,

LOUISBURG, N. C.