

### Nazi Defenses Shattered By Russians

London, Thursday, Dec. 30.—The Red Army has surged to within 48 miles of the pre-war Polish border west of Kiev in a spectacular break-through along a 110-mile axis, continuing today its offensive across flat steppeland offered the Germans few natural defenses short of the Bug River, 200 miles away.

The Soviet power drive took 250 communities in 24 hours, including the major rail hub and fortress town of Korosten as powerful German defenses were suddenly shattered, Moscow announced.

Capture of the town of Vygov, 12 miles beyond Korosten, and Ushomir, in between, on the railway, line southwestward to Novograd Volinsk placed the Russians well beyond the Zhitomir-Korosten high-water mark of their earlier offensive toward Poland.

Additional details of the Moscow communique, recorded by the Soviet monitor, also put the swift-moving Red Army 13 miles from the important rail junction of Berdichev as they captured Byelopolle to the southeast in a significant 10-mile push from Nekhorosch, taken Tuesday. Byelopolle is on the Berdichev-Kiev highway.

Advances in the past 24 hours gave the Russians complete control of a 35-mile sector of the trunk railway line from Leningrad to Odessa as they captured Chernykhov, 12 miles north of Zhitomir, Turchinka and Fassovo, rail stations between Korosten and threatened Zhitomir.

In another important thrust at the southern end of the advancing Russian arc the Second Ukrainian Army captured Skvira, 50 miles southwest of Kiev, terminus of a short feeder railway into the Kiev-Zhmerinka line.

The Soviet midnight bulletin told of Germans running away, abandoning equipment and "suffering exceptionally heavy losses and equipment" in engagements still taking place.

### LESLIE NELMS KILLED

(Continued from Page 1)

John Nelms was about half drunk. We shot at some tin cans out in the yard. I drove them back to Henderson about 3:30 p. m. Leslie went in the station and came back and said that he could not buy a ticket as the train was crowded, or that the train had gone. I told him to see about going on the bus, and he went in the bus station and came back and said the bus would not leave until about 8 o'clock. We left Henderson about 5 p. m. and came back to my house. When we got back to my house Leslie and Robert left my house with Leslie driving. This was about 6 p. m. About 7:30 I had to carry Mr. and Mrs. Overby to Henderson. About 3 miles from my home I found them in the ditch. I helped them out and I went on to Henderson.

Mr. Overby said he was in the house and did not go out where they were.

Frank Robertson said, "I was going to my brothers about dark and stopped to help two men out of the ditch. The man under the wheel asked me why I wasn't in the Army, and the man dressed in the uniform said let him alone, he helped us out of the ditch. They drove off in direction of Kittrell. About 9 o'clock I was going back home. I heard a dog barking and when I looked down the road I saw the same car. I turned to the off side of the road to keep them from seeing me. The car was in the middle of the road.

Sheriff Moore said he drove over, the section where Robert Nelms said he was and failed to find where Nelms had turned around.

The jury having heard all the evidence available retired and returned a verdict as follows: "We find that the deceased, Leslie Nelms, came to his death by a gun shot wound at the hands of party or parties unknown to us."

LATER Officers or individuals took the matter up with the State Bureau of Investigation, who began an investigation had officers in Franklin County arrest John Robert Nelms, according to information given the TIMES by officers, and took him to Henderson, where he was placed in jail to await further developments.

The body was taken to Durham by the Provost Marshall at Camp Butler, where a more thorough investigation was made, and the body prepared for burial was returned to Louisville.

Funeral services will be held from Mt. Ghiesd Christian Church Friday at 2 p. m. by the Rev. Mr. Madren. Burial will follow in the family cemetery.

Sheriff J. P. Moore, Deputy R. E. Neal and Vance County officers assisted in the Franklin County Coroner's investigations.

### KEEP WORKING

Do you work in the woods or sawmill? Are you going to take day off when payday rolls around? Wait. Think! The food you could produce in that day would provide more equipment for fighting men, maybe a flow you know. The pulpwood cut would furnish containers thousands of pounds of food

### FRANKLIN COUNTY FARM AGENT DEPT.

Now that the Christmas holidays have come and gone, farm people are urged to begin making definite plans for the coming year. It is our opinion that the production of agricultural products as an enterprise is a business that requires as much planning and managing as most any business that may be named. From observation we clearly note that it is the farmer who plans and looks ahead that is usually most successful.

Franklin County farmers in producing the 1944 crop will be faced with the greatest hardships and obstacles in a great number of years. Certainly since the last war. The hired labor situation as we usually term it is bad at present and continually growing worse due to farm labor being induced by high wages into defense industry. Quite a number of Franklin County land owners report non-rented farms for the coming year. In addition to labor, we must get along with very little new and practically no additional mechanized equipment. The gasoline situation, according to OPA reports, is such that will require each one of us to cut our so called essential driving to the barest necessity.

The soybean and lespedeza crops in Franklin County in 1943 were practically a failure so far as seed production was concerned. This means that it will be necessary to secure from out of the County all lespedeza and soybean seed. Franklin County farmers are asked to produce in 1944 approximately 16,000 acres of hay and 3,000 acres of soybeans for oil. In order to meet these goals, it will require the purchase of 12,500 bushels of soybeans and 400,000 pounds of lespedeza seed. We have been asked to produce 20% more tobacco than last year and sufficient food and feed stuff to make us as near as possible self sustaining.

These facts are presented to Franklin County farmers, because we are of the opinion that the American public and particularly the farmers are people who can and want to face the facts. We know that to produce our goals in 1944, will require 100% support of every man, woman and child. We, therefore, urge each and every farm operator to begin carefully planning 1944 production intentions.

Miss L. Elizabeth Best, Secretary to the County AAA Committee, states that present plans are to conduct a farm canvass in early January. Local committees will contact every farm operator to determine 1944 production intentions.

WALTER FULLER, Asst. County Agent.

or him. Don't let his finger point to you in death, accusing you for idleness when you could have saved him. Stay on the job. America must have wood, must have it quickly and in unbelievably large quantities.



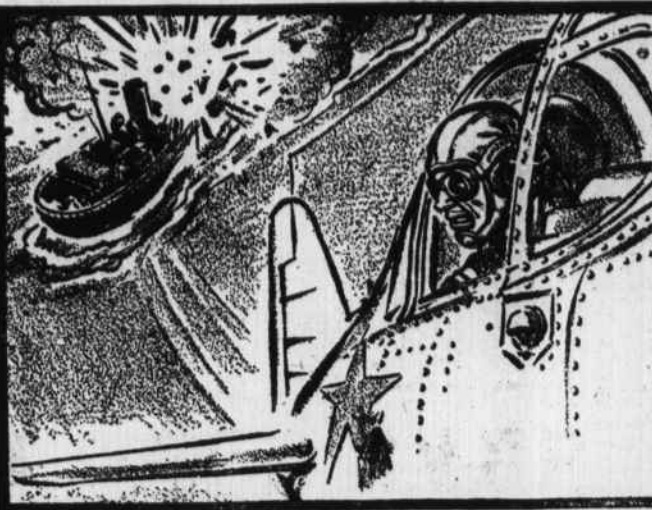
We can't win the war without the navy; our soldier can't win unless our ships deliver; merchant ships can't deliver unless the home front provides. One important convoy job is flashing signals as this youth is doing in the Battle of the Atlantic. Your equally important job is to continue buying War Bonds until victory.

### WANTED IMMEDIATELY

White or Colored Sweepers, Oilers, Flour Packers, and Boxcar Loaders in Essential Industry - Shift Work - Starting wage 50 cents per hour—52 1/2 within 60 days—55 within 90 days. Time and one half all over 40 hours. Can give 56 hour per week guarantee. Permanent position with further advancement possible. Free hospital, health, accident and life insurance. Excellent working conditions.

DIXIE PORTLAND FLOUR MILLS, First and Hull Streets, Richmond, Va.

### AMERICAN HEROES BY LEFF



The South Pacific Aerial Exploits Cross has been awarded to First Lt. William F. Campbell, U. S. M. C., of Minneapolis for his solo bombing attack against five Jap transports and ten destroyers. While ship and shore batteries concentrated all their fire against him, filling the air with flak, he dive-bombed the ship formation, blasted a transport with a direct hit. The War Bond you buy today will help load bomb racks to shatter Jap supply lines.

U. S. Treasury Department

### SOIL CONSERVATION NEWS

By W. O. Lambeth

Farmers with timber suitable for lumber and pulpwood can make a valuable contribution to the war effort this winter by cutting and selling usable trees say the District Supervisors of the Tar River Soil Conservation District.

War needs for wood are daily becoming more and more pressing according to the Supervisors. However, if farm woodland owners would cut and sell their marketable trees this winter it would go a long way toward helping the critical wood situation.

It is estimated that in the South 45 per cent of the sawlog production comes from farms. Likewise, a survey by the War Production Board indicates that farm woodlands produce 38 per cent of the supply of pulpwood. With the timber industry hampered by labor and equipment shortages, farm woodlands will have to produce a large part of the growing needs for wood and wood products.

However, the District Supervisors caution against ruthless clear-cutting of farm woodlands. Woodland owners are being asked to cut and sell their timber now while the need is urgent, but they are also being asked to observe

good forestry practices while cutting it. Franklin County farmers are urged to cut their trees on a selective basis, removing only mature trees, and diseased, limby, and knotty ones. Such a cutting system will leave ample growing stock for future timber crops, and at the same time will yield sufficient revenue to pay for the cutting with a small profit left over for the land owner.

### PULPWOOD CUTTING DEMONSTRATION TO BE HELD

A pulpwood cutting demonstration will be held on the Roy Overton farm, Thursday, January 6, 1944 at 1:30 p. m. This demonstration is being sponsored by all the Agricultural Agencies working in Franklin County and the Franklin County Pulpwood Committee. Mr. E. K. Ach, forester with the North Carolina Pulp Company, Plymouth, N. C., and Mr. Hobbs, Extension Forester, working in the County will be present to answer any question about cutting and marketing pulpwood.

The Overton farm is located on the Edward Best-Justice Highway and all farmers in the Justice community interested in cutting pulpwood or thinning their woodlands are urged to be there promptly at 1:30 p. m. with an axe or crosscut saw.

Patronize TIMES Advertisers

### BONDS OVER AMERICA

Advertisement for War Bonds featuring an illustration of a house and the text: 'On the shores of the Delaware stands the oldest residence in Pennsylvania, the Caleb Pusey House, built at Upland in 1683 of field stone and mortar like so many residences of early Colonial days. Keystone Home. The countries of occupied Europe hold ancient landmarks pointing to the dim past, but in the mad attempt to Nazify the entire continent Germany has wantonly destroyed thousands of historic links to obliterate all but the Teuton trademark. Keep Our Heritage; Buy More War Bonds.'

### PULPWOOD NEEDED IN FOOD PRODUCTION

Pulpwood cutting and food production go hand in hand to serve American fighting men, Secretary Claude R. Wickard of the Department of Agriculture said this week in urging farmers to back the Victory Pulpwood Campaign.

At the same time, Marvin Jones, War Food Administrator, pointed out that the pulpwood shortage directly affects farmers because they are large users of its products in carrying on their normal trade in farm produce.

"I have watched with interest the development of the Victory Pulpwood Campaign, in which farmers in pulpwood-producing areas are playing such an important part," Secretary Wickard stated.

"The farmers of America are performing outstanding service in raising foodstuffs for our fighting men, our Allies, and the home front. They will do their part in producing the pulpwood that goes into supplies and equipment for their own sons, brothers, and friends overseas.

"Actually the one production job complements the other. Food from our farms is transported to our fighting forces in paper-board boxes and multi-wall paper bags made of pulpwood.

"County agents and foresters, who already have helped in the Victory Pulpwood Campaign, may be counted on to advise farmers on how and what trees to cut in accordance with good forestry practices. Also, the Forest Service is including increased production of pulpwood as a major objective of its program, initiated at the request of the War Production Board, to stimulate the output of forest products needed for the war."

War Food Administrator Jones said, "Farmers constitute one of the biggest groups of farm products users." Because of the critical shortage of both pulpwood and lumber, he urged farmers to:

- 1. Increase production from farm woodlands during the winter.
- 2. Provide labor for forest industries during the slack winter season on farms.

He called attention to the Selective Service regulations which permit farmers and farm laborers to do such seasonal work without losing their deferred

classification in agriculture. Increased production from farm woodlands is needed for the manufacture of containers, which are highly essential to food production. War Food Administration officials stated. Many veneer mills, basket and crate factories, and pulp and paper mills depend to a large extent on supplies of logs and bolts produced by farmers. Current shortages in supply have been attributed in part to a slackening in production from farm woodlands. Increased production of these forest products by farmers themselves will aid in assuring a supply of containers sufficient for the marketing of 1944 crops.

To market the fruit and vegetable crop in 1944 some 150 million new baskets and hampers, 450 million berry cups, 50 million wirebound veneer boxes, more than 300 million nailed boxes and crates, and large quantities of paper and pulp products for wraps, liners, pads, bags, and cartons, will be required. Other farm crops expand these needs.

Home demonstration clubs have set aside January as "Time For Team Work" meetings. All members of the family, including 4-H boys and girls, will take part.

FOR FIRST CLASS MAILING PHONE 288-1

Louisburg THE HOME OF BETTER PICTURES THEATRE THE LOUISBURG THEATRE HAS PLAYED OR WILL PLAY EVERY PICTURE OF IMPORTANCE TIME OF SHOWS Saturdays continuous 1 to 11 — Sundays at 2 - 4 - 9 Monday - Tuesday - Wednesday - Thursday - Friday 3:30 - 7:15 and 9:10 BUY WAR BONDS AT THIS THEATRE AS A SALUTE TO YOUR HEROES!

We Wish All Our Friends and Patrons A Happy and Prosperous New Year LAST TIMES TODAY -- FRIDAY ROBERT YOUNG and DOROTHY MCGUIRE in "CLAUDIA" From Rose Franken's Great Book.

NEW YEAR'S EVE MID-NITE SHOW -- OPEN 11:40 Ten Free Passes to the Holder of the Lucky Ticket PATRICIA MORRISON - KENNY BAKER BELITA - TED FIO RITO AND BAND in "SILVER SKATES" SATURDAY, JAN. 1 -- Double Feature GENE AUTRY and SMILEY BURNETTE in "RIDE TENDERFOOT RIDE" CHESTER MORRIS in "CHANCE OF A LIFETIME" also "THE MASKED MARVEL"

SUNDAY - MONDAY, JAN. 2 - 3 -- A Great American Novel Comes to the Screen! DON AMECHE - FRANCES DEE - HARRY CAREY and ANN RUTHERFORD in McKinlay Kantor's "HAPPY LAND" Also on the same program The March of Time presents the story of juvenile delinquency today "YOUTH IN CRISIS"

TUESDAY, JAN. 4 -- Family Day ANN SHERIDAN and RICHARD CARLSON in "WINTER CARNIVAL" also "THE BATMAN"

WEDNESDAY, JAN. 5 -- VIRGINIA WEIDLER and EDW. ARNOLD in "THE YOUNGEST PROFESSION" with Lana Turner - Greer Garson - Walter Pidgeon and William Powell as guest stars.

THURSDAY - FRIDAY, Jan. 6 - 7 -- NELSON EDDY - SUSANNA FOSTER and CLAUDE RAINS in "PHANTOM OF THE OPERA" (In Technicolor)

COMING NEXT WEEK Alice Faye and Carmen Miranda in "THE GANGS ALL HERE" (In Technicolor) Olsen & Johnson in "CRAZY HOUSE"

War Bonds Issued at Any Time DAY or NIGHT

FAMILY REMEDIES THE WELL KNOWN Watkins Products GIVE YOU RESULTS SAVE YOU MONEY I am sole representative for Cedar Rock, Cypress Creek and Louisburg Townships. Will make regular trips throughout this territory. Write me if your needs are urgent. J. E. WILDER R 2, SPRING HOPE, N. C.

New Year GREETINGS 1944 Just a line to extend to you our sincere thanks for your patronage in 1943, and to wish you and yours a most Happy and Prosperous New Year. Remember, we are always at your service. THE FASHION SHOPPE "A Smart Shop For Smart Women" LOUISBURG, N. C.

CLEARANCE! SALE -- COATS -- SUITS -- DRESSES THE FASHION SHOPPE "A Smart Shop For Smart Women" LOUISBURG, N. C.