



KAY SUPPORTS ECC

Kay Hall (third from left) is pictured with a group of sorority girls at East Carolina College who are planning a way to support East Carolina for university status during homecoming weekend, October 7-9. Kay is the daughter of Mr. and Mrs. A. E. Hall of Youngsville.

Ranger Warns Of Beetle Infestation

County Ranger Joseph E. Smith issued a release today from Service Forester Robert L. Tyson of Rocky Mount warning of the danger of beetle infestation in Franklin County wooded areas.

The text of the release follows:

"The dry weather we experienced during midsummer, has brought about an increase in beetle activity in pine stands throughout Franklin County. A recent flight survey by the N. C. Division of Forestry in the Northwest portion of Franklin County located from forty to fifty 'spots' or areas of infestation ranging in size from a few to many trees.

Most of the trouble has been caused by the Ips Engraver Beetles which attack and destroy valuable timber.

There are two methods which are employed to control these pesky insects where outbreaks are serious.

The cut-salvage method is used when there is sufficient numbers of trees killed to make a cutting operation feasible. The merchantable portion of the tree is removed from the woods and the infested slabs and tops are burned or sprayed with benzene hexachloride in No. 2 fuel oil.

When a salvage operation is not possible, the cut-spray method is used. The infested tree is cut down and sprayed all over with benzene hexachloride and No. 2 fuel oil.

For further information or assistance, contact Joseph E. Smith, County Ranger, Route 2, Louisburg, N. C."

Film Reviews

AMBUSH BAY

The setting for this film is the Philippine Islands and the time is 1944 during World War II.

Taking the three top roles are Hugh O'Brian, as First Sgt. Steve Corey; Mickey Rooney, as Sgt. Ernest Wartell and James Mitchum (Robert's son), as Pfc. James Grenier the radio man. They lead a

Command Performance Camaro By Chevrolet



Camaro Sport Coupe with style trim group you can add.

You've been waiting for a Chevrolet like this. Now it's here.

Camaro! Long, low hood. Short rear deck. Big-car stance for stability. Strato-bucket seats. A 140-hp Six or 210-hp V8, depending on model. Camaro gives you a car full of comforts from carpeting on the floor to vinyl upholstery all around. There's a lot of security, too, with new safety features like the GM-developed energy-absorbing steering column. Camaro! Sport coupe or convertible. You can order a Rally Sport with hideaway headlights or an SS 350 with Camaro's biggest V8. See your Chevrolet dealer now!



32-4925

Everything New That Could Happen . . . Happened! Now, at Your Chevrolet Dealer's!

ROWE CHEVROLET - BUICK COMPANY

124 W. Nash St. Louisburg, N. C. GY 6-3314 Manufacturer's License No. 110

marine patrol to make the island safe for General MacArthur's return.

Their task is a hard one and after learning the Japanese are aware of the invasion

they face almost impossible odds in finding out the enemy's plans.

Throughout the film there are generous portions of suspense and action. In the end,

only one survives and fights his way back to witness MacArthur's famous speech "I have returned."

Patronize TIMES Adv.

The abolition of the woodshed, as heating plants come into general use, may have serious effects upon the education of children.

Entertains Literature Club

Mrs. I. D. Moon was hostess to the Current Literature Club at her home Tuesday afternoon, September 27, 1966. There were fourteen members present as follows: Mesdames I. D. Moon, D. T. House, M. S. Davis, Colin McKinnon, Malcolm McKinnon, A. M. Goodwin, Tommy Harris, Billy Parrish, John Parnell, A. S. Tomlinson, Cortland Smith, Genevieve Perry, C. W. Robbins, and Miss Sarah Richardson.

Upon arrival of the club members the hostess served delicious Boston Cream Pie with mints, nuts and hot coffee.

Mrs. Moon, president, called the meeting to order and welcomed the members to the first meeting of the year. The minutes were read and approved, and the books to be circulated among the members during the year was discussed. The President welcomed Mrs. Cortland Smith as a new member. The president expressed to Mrs. Davis the club's appreciation for the attractive covers for program books prepared for the year on the topic, "The History of Christianity."

the program was presented. The topic for discussion for the year is "The History of Christianity." This will include Christian Architecture Literature, Art and Music. We will also include novels on the different apostles and colored slides from time to time.

Mrs. House gave an interesting program on the subject, "Symbols of Christianity." This program was divided in three parts: Symbols of the Old Testament, Symbols of the New Testament and Symbols of the Cross.



CHEVROLET MALIBU

The 1967 Chevelle Malibu Sport Sedan is one of 13 models in this popular Chevrolet line. Newly styled front fenders, radiator grille and tail lights are some of the refinements found in the new Chevies. Added to the line is a luxurious new Concours 4-Door, 2-Seat Station Wagon with wood grained exterior trim. These new models will be on display at Chevrolet dealers on September 29.

NOTICE NON-WHITE RESIDENTS OF FRANKLIN COUNTY

THERE WILL BE A MEETING OF NON-WHITE RESIDENTS OF FRANKLIN COUNTY HAVING A FAMILY INCOME BELOW THE LEVEL AS SET FORTH IN THE FOLLOWING SCHEDULES:

Non-Farm Households		Farm Households	
Persons	Family income	Persons	Family income
1	\$1500	1	\$1050
2	2000	2	1400
3	2500	3	1750
4	3000	4	2100
5	3500	5	2450
6	4000	6	2800
7	4500	7	3150
8 or more	5000	8 or more	5000

THIS MEETING WILL BE HELD IN THE COURT ROOM AT
THE FRANKLIN COUNTY COURTHOUSE
ON THURSDAY, OCTOBER 6th
AT 8:00 P. M.

FOR THE PURPOSE OF SELECTING THREE(3) MEMBERS TO THE BOARD OF DIRECTORS OF THE FRANKLIN-VANCE-WARREN OPPORTUNITY, INC.

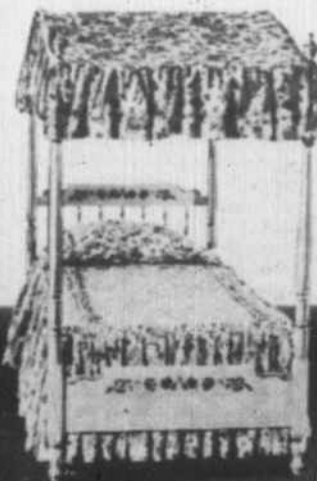
ALL ADULT MEMBERS OF NON-WHITE FAMILIES WHO ARE RESIDENTS OF FRANKLIN COUNTY IN THE ABOVE SCHEDULES OF INCOME BRACKETS ARE URGED TO ATTEND

Warm up your cold bedroom floor with Mohawk carpet at a price that won't keep you awake!

What luxury! No more chilly welcomes from a cold, hard bedroom floor—just the delightful pleasure of wiggling your toes in thick bedroom carpeting so heavenly, you'll love getting up in the morning.

Now, don't think that carpeting a bedroom means you

must use the same kind of carpet you have in your living room...or settle for an old, threadbare hand-me-down, either. We're featuring a dreamy new carpet with all kinds of decorating possibilities. And best news of all—it's as soft on your budget as it is under your feet!



It's Mohawk's SAVON...with pile of 100% Cumuloft® continuous filament nylon! You'll marvel at the sumptuousness of this bulky loop, tip-sheared beauty—and you'll be absolutely amazed at its "bounce back!" It just can't be crushed. SAVON hides footprints with ease and repels stains from just about anything you might spill on it (even a midnight snack!)

SAVON's Cloud Ripple design is available in 20 of the most luscious colors ever...ranging from the restful beauty of Moss-Green to the vivid excitement of Damask Red! And so practical, too. You can make your bedroom warmer and more cheerful with SAVON...

for only **6.95** a square yard

Come in today; see all the other Mohawk carpets we're featuring—for every room in your home. Or, call us for our convenient shop-at-home service!



H. C. TAYLOR HARDWARE & FURNITURE

East Nash Street Louisburg, N. C.