

Garden Time

By M. E. Gardner

"Why do dogwood trees sometimes fail to bloom?" Lack of sunlight and rapid growth are the two most common causes of non-blooming.

In some cases it is not possible to provide more sunlight, especially if the plants are heavily shaded by large trees.

If they are making rapid growth in a more favorable location and still fail to bloom, you might drop nitrogen from the fertilizer and apply only phosphorus and potash.

Don't expect too many flowers on young plants, especially if they are in good soil and growing rapidly. Plants making slow growth on some of the poorer soils will usually bloom ahead of those growing in better soils and making more rapid growth.

"We have an American holly which never bears berries. What can we do about it?" There are several reasons why our American hollies fail to set berries. This type does not usually bloom until about the fifth year after planting. It may take longer.

This is a dioecious plant, having male flowers on one plant and female flowers on a separate plant. The male plant does not produce berries but furnishes pollen to fertilize the female flowers. The female plant may be too far away from the male for successful pollination.

Two other causes of non-fruiting are cold damage to flowers by late frost or freezes and cold rainy weather during the critical period of pollination.

Poison ivy never fails to give some member of the family trouble during the

summer. Can it be successfully controlled? Yes. Spray with Amiral according to instructions given on the container. Amino triazole is another name for this material.

Watch out for the spittle bug on your hollies. It can do extensive damage in a very short time but, fortunately, is easily identified. The insect is black with two distinct red parallel lines crosswise the wing covers. Spray or dust with malathion until controlled.



SKIRTED—The swindress is an important silhouette for summer '69. DeWeese Designs chooses floral-splashed cotton crepe for a skirted style with side slits for swimming and sunning ease. The matching jumper coverup has a shoulder yoke and pocket accents.



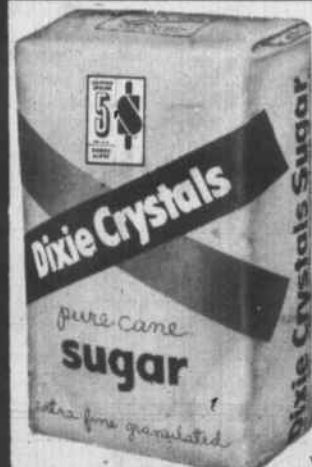
We will be closed Friday, July 4th, but for your shopping convenience we will be open Thursday Night til 8:30. We'll be open Saturday, July 5th as usual

RUBBING ALCOHOL PINT BOTTLE **17¢**

ARMOUR'S VIENNA SAUSAGE 5 OZ. CANS **2 45¢**



ALL COCA COLA PRODUCTS (except 16 oz. Cokes) REG. COKES, KING SIZE COKES, TAB, SPRITE & FRESCA. **3 6 BOTTLE CARTONS 1 00**



SUGAR **5 49¢** Lbs.

WITH \$5.00 FOOD ORDER

CHARCOAL 10 Lb. BAG **59¢**

PAPER PLATES 100 Ct. Pkg. **89¢**

OPEN FRIDAY NIGHTS TIL 8:30 P.M.

MURPHY'S

SUPER MARKET

We Reserve Right To Limit Quantities.

Stock-Up Specials FOR JULY 4th

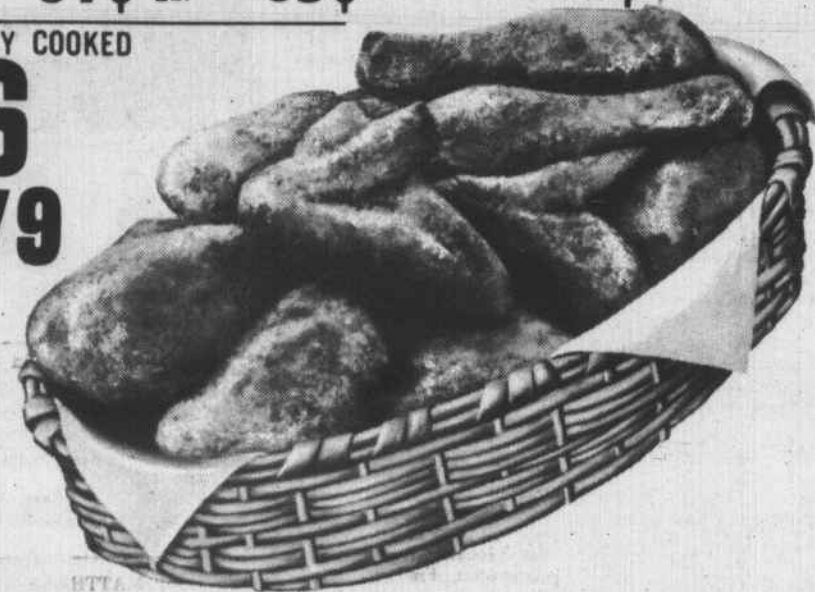
GRADE A WHOLE **FRYERS 33¢** Lb. **CUT 37¢** Lb.

— FRYER PARTS —

BREAST **59¢** Lb. LEGS **39¢** Lb. WINGS **35¢** Lb. BACKS **15¢** Lb.

ARMOUR STAR FULLY COOKED

HAMS **3 Lb. CAN \$2 79**



QUALITY GROUND BEEF **59¢** Lb.

CAMPFIRE BACON **67¢** Lb.

JESSE JONES SAUSAGE **63¢** Lb.

JESSE JONES FRANKS 12 OZ. PKG. **49¢**

WAYPACK SWEET MIXED PICKLE QUART **49¢**
 WAYPACK SWEET SALAD CUBES 3 12 OZ. JARS **89¢**
 POWHATAN SWEET POTATOES 2 1/2 SIZE CAN **29¢**
 BOUNTY TOWELS 3 LARGE ROLLS **1.00**

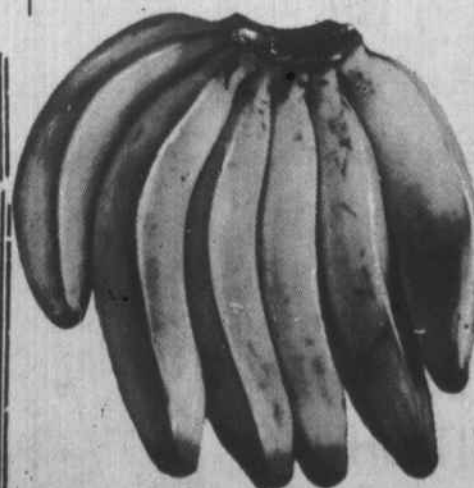
— FROZEN FOODS —

GORTON'S BREADED SHRIMP 8 OZ. Pkg. **59¢**
 PET RITZ PIE SHELLS 3 Pkgs. OF 2 FOR **95¢**

AUTOCRAT ICE MILK 1/2 Gal. **39¢**

SUNSHINE SUGAR WAFERS 3 1/4 OZ. Pkg. **41¢**

PLENTY FRESH PEACHES, LOCAL GREEN BEANS, CALIFORNIA CANTELOUPES, WHITE GRAPES, FRESH BLUBERRIES, SPRING ONIONS AND MANY MORE ITEMS TO CHOOSE FROM



RIPE BANANAS 3 Lbs. **29¢**
 CHARLESTON GREY WATERMELONS **79¢** AND UP
 LARGE SIZE CAL. LEMONS DOZEN **53¢**

CRISCO 3 Lb. CAN **79¢**
 PERT NAPKINS 200 Ct. Pkg. **29¢**
 SUN VALLEY MARGARINE 2 Lbs. **35¢**
 FRENCH'S MUSTARD 2 6 OZ. JARS **25¢**
 WELCH GRAPE DRINK 3 46 OZ. CANS **95¢**
 TOPPS CANNED DRINKS 5 CANS **39¢**



Enjoy miles of nonstop music with a Motorola 8-Track Stereo Tape Player!

Deluxe Features

- Up to 80 minutes of uninterrupted entertainment
- Solid state dual-channel amplifier—authentic stereo sound
- Track selector • Balance control
- Interchangeable tape cartridges can play on Motorola 8-track home unit, too
- Variable tone control
- Two 5 1/4" speakers with rich, die-cast trim plates
- Protective hinged cartridge door

EASY TERMS

Easy Installation



MOTOROLA Pioneer in Automotive Sound

FOLDING STOOL - CHAIR



An Adult Size folding back Stool or Chair. Sturdy, comfortable & very Practical. Ideal for camping, picnics, home, travel, games and meetings. Folds flat for easy carrying. A fantastic value at this low, low price!

1 19 VALUE WISE

Limit 2 per customer additional \$1.59

Thomas Woods
 PHONE 496-5128
 S. MAIN ST. LOUISBURG, N.C.