

Rhodes Reminds Prep Fans Of Sportsmanship

Raleigh - School officials in Franklin County have been reminded that they should take definite steps to assure that sportsmanlike conduct prevails at all school sports events.

In a message to superintendents and principals, Raymond K. Rhodes, director of school athletics and activities in the State Department of Public Instruction, stressed the importance of preparation in improving the conduct of spectators and team members.

State Superintendent Craig Phillips, in his foreword to the pamphlet, emphasized that "competitive programs in athletics have educational as well as recreational value. If these activities are to promote good citizenship among the spectators and in the communities where the games are played, careful planning and supervision are necessary. School administrators need to

do everything possible to keep emergency situations from developing."

Plans should also be made to control any misconduct that might occur, Rhodes advised. He offered the following pointers on the eve of the basketball season opening:

"Before the first game of the season, hold an assembly program directed toward and emphasizing the role of the spectator, as it concerns sportsmanship. An exchange assembly should be arranged with the opposing schools which are your most serious rivals.

"Discuss with all school personnel their responsibility in maintaining a reserved and sportsmanlike outward display of behavior. For the coach, this is a must. He is the key to actions of the players and spectators.

"Take the necessary steps to control and supervise the

bench conduct of your coaches and players in keeping with the rules of basketball."

Officials should be protected from irate actions of coaches or fans, Rhodes observed, and it should be made very clear that "any belligerent individual or any person who is under the influence of alcohol should be ejected not only from the gymnasium but also from the school grounds."

Assigning an adequate number of police, both inside and outside the gymnasium, will be a big help in maintaining good discipline, he said.

Rhodes concluded by urging the school officials to work continuously toward the goal of developing good sportsmanship.

Rhodes' memorandum was a follow-up to a booklet issued to school administrators and coaches before the opening of the school year. This

publication, "Crowd Control Procedures for Athletic Events," offers more detailed suggestions for efficient supervision of game spectators.

One point of particular interest in the pamphlet is the message adopted by the National Federation of State High School Athletic Associations and recommended for inclusion in printed programs or to be read over the P.A. system before games:

"These are high school athletes who are performing here tonight. They are friendly rivals as members of opposing teams. They are not ene-

mies.

"This, basically, is the theme of interscholastic athletics... the idea of friendly competition. The visiting team tonight, and in every interscholastic game, is a guest of the home team. They are expected to be so regarded and so treated.

"The officials are men who, by agreement between competing teams, are assigned to administer the rules of the game. Their experience and their integrity qualify them for their part in this friendly interscholastic contest."

Patterson Is Ferrum Lineman Of The Week

Robert Patterson-known here as "Crow"-was chosen Lineman of the Week at Ferrum College recently for his play in the Panther's 34-6 win over Marshall University freshmen.

Patterson, son of Mrs. Marvin Pleasants of Louisburg,



PATTERSON

played football at Louisburg during the 1963-66 period.

Patterson is now 6'1" and weighs 190 pounds and hauled in two touchdown passes in Ferrum's victory. Early in the first period, "Crow" caught a Jeff Doolittle toss on a third down play. The pass went for four yards to Patterson, standing in the end zone.

In the third period, the Panthers drove to the 23 and on first down Doolittle hit Patterson on the 12 and the lanky Louisburg grizzer raced the distance for the second TD. Patterson has been a favorite target of Doolittle this year. The likeable local has caught six touchdown passes this season from his end posi-

tion.

Coach Hank Norton noted that Patterson has been a starter for two years and will be missed by the Panthers next season.

"He's the type of player who goes out week after week and gets the job done. Bob's a fine, steady-type football player."

Ironically, Patterson scored only one point after touchdown in his four years at Louisburg, although he played well and made All Conference honorable mention in his senior year, 1966. His PAT score came on a pass from Jimmy Geddie while at Louisburg. Patterson's teams won 12, lost 23 and tied 3.

Thanksgiving Cage Tourney At LJC Starts Friday

Louisburg College will host the seventh annual Thanksgiving Tournament Friday and Saturday nights of this week. Visiting teams will be Southwood of the Cavalier-Tarheel Conference and Brevard and Wingate of the Western Carolina Junior College Conference.

Southwood's record is 3 wins and two losses. Brevard is 2-0 and Wingate 2-2. The host Hurricanes are 4-0.

Brevard is led by sophomores Kagel, a sharp shooting 6'4" forward, and Joe Hunt, a 6'3" jumping jack forward, plus several freshmen cagers from the Hoosier state of Indiana.

Wingate is led by 5'10" guard Jerry Thomas who has scored 36 and 41 points in single game efforts so far this year. Six foot, six inch center Kelby Griffin is averaging close to twenty points per game and they have a flashy rebounder in person of 6'5" Thaxton who played his high school basketball at Durham senior high school.

scoring a lot of points and who lead the pressure defenses employed by Coach Jim Tompkin's team.

Predy scored 32 points against Methodist College Jayvees when he hit 16 of 17 shots from the floor. Wilder averaged 15.5 points per game as a freshman last year and has maintained that pace thus far this year.

The host Hurricanes are paced by co-captains Larry Paschall and Terry Davis. Paschall is scoring at a 22.5 clip and Davis has averaged 19.8 points per game while gather-

ing in 55 rebounds in four games. This pair receives good support from Rick Richardson with 12.5 points per game and George Bowden with 11.5 points per game.

Southwood will face Wingate in the opener at 7:00 Friday night. Louisburg will play Brevard at 9:00. On Saturday the losers will play at 7:00 and the championship game is slated for 9:00.

Louisburg won the tournament last year in a 68-67 squeaker over Brevard.

Turkeys, Motorists Could Meet End During Thanksgiving

Thousands of turkeys will meet an untimely end this Thanksgiving, but don't tempt the same fate by smashing into one of the 1,700 traffic accidents which the N. C. State Motor Club warns may snuff out at least 27 lives and injure about 1,000 others on North Carolina's streets and highways during the long holiday.

The state will officially count its Thanksgiving highway toll from 6 p.m. Wednesday, November 26, through midnight Sunday, November 30, for a period of 102 hours. Last year during a similar period, the final tally was 33 killed and 928 injured in 1,703 accidents.

Leading accident causes were: speeding, 370; failed to yield right of way, 236; drove left of center, 174; failed to see if movement could be made in safety, 166; and following too closely, 155.

Motorists were cautioned to avoid these and other driving faults by Thomas B. Watkins, motor club president, who urged: "Let's use extra care in our driving and make Thanksgiving a safe holiday."

"Traffic accidents over the four-day holiday last year took more than 750 American lives, the highest highway death toll in any holiday period on record -- and a national disgrace."

College Conferences Swings Into Action

Three Cavalier-Tarheel teams swung into action last week. Louisburg, current champion, won its opener over Kittrell and then poured on the heat in its 107-85 victory over Wingate.

Southwood also began its new season on a winning note, downing its first two opponents.

Albemarle, the only other conference team to start, dropped its opener to Chesapeake. Even in defeat, Coach Braxton was impressed by the play of several freshmen and the fighting spirits.

Thursday, November 13
Louisburg wins opener over Kittrell

Louisburg 89-Kittrell 80
Halftime 42 LC; 38 KC

Louisburg: Paschall 26, Davis 23, Richardson 19, Wilson 10, Kittrell: Sport 22, Trueblood 14.

Leading rebounders: Davis 12 (L), Vincent 13 (K)

Southwood downs Methodist Junior Varsity in opener. Southwood 87; Methodist 69
Halftime 33 (S); 39 (M)

Southwood: Wilder 21, Bradshaw 20, Predy 17, Tucker 14. Methodist: McNeal 18, Leake 13, Conwell 12.

Saturday, November 15
Louisburg rolls over Wingate

Louisburg 107-Wingate 85
Halftime 42 (L); 28 (W)

Louisburg: Davis 19, Paschall 17, Bowden 13, Spence 10. Wingate: Thomas 36, Griffin 16.

Leading rebounders: Davis 11 (L); and Griffin 9 (W)

Southwood slips past Southeastern
Southwood 77-Southeastern 72
Halftime 40 (SW); 38 (SE)

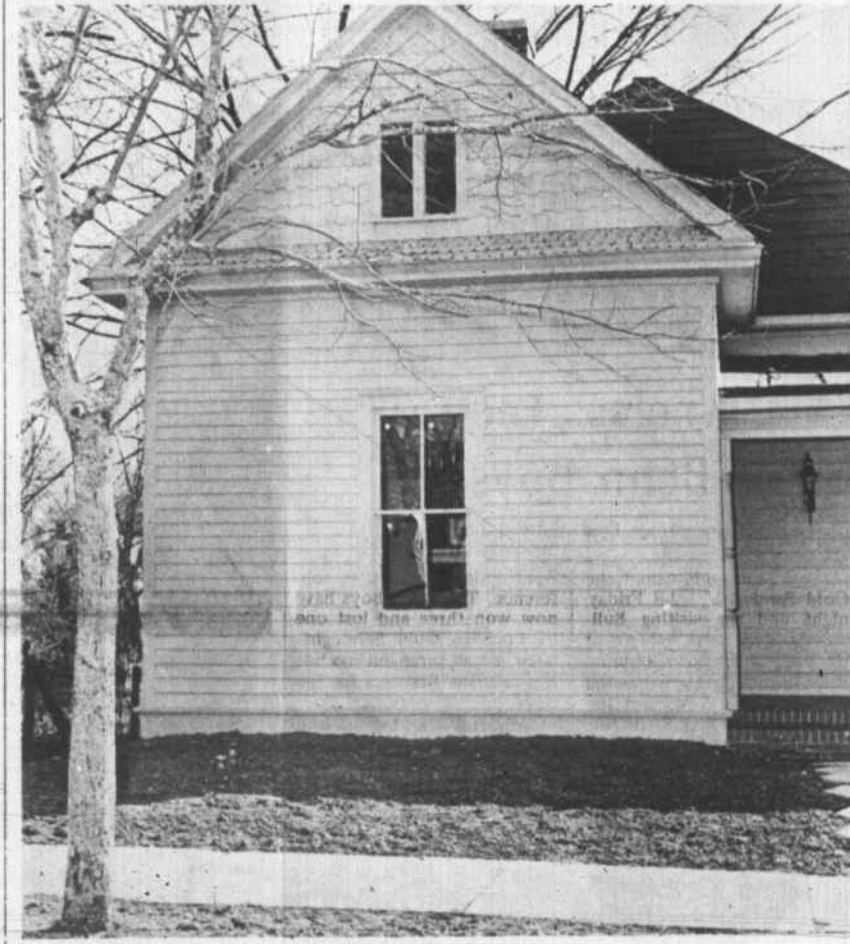
Southwood: Bradshaw 24, Predy 20, Wilder 13. Southeastern: Hogins 28, Stanley 15

Leading rebounder: Dutton 13 (SW)

Albemarle drops opener to Chesapeake
Albemarle 88-Chesapeake 96
Halftime 32 (A); 42 (C)

Albemarle: Walker 19, Meekins 15. Chesapeake: Collins 26, Brave 25, Chase 19, Brow 17

Scoring Leaders: Bradshaw, Southwood, 2 games, total of 44 points for an average of 22. Paschall, Louisburg, 2 games, total of 43 points for an average of 21.5 points. Davis, Louisburg, 2 games, total of 42 points for an average of 21 points.



Vandalism Continues

The dwelling house above, owned by Franklin Coroner James Edwards, became the victim of vandalism again Saturday. Edwards reported that three weeks ago, vandals broke some of the step stones at the residence located on Church Street here and two windows were broken by thrown rocks sometimes Friday night or Saturday morning.

Staff photo by Clint Fuller.

Franklin Area Standing

(Not including games last night, with some games not reported)

	Conference		Overall	
	Won	Lost	Won	Lost
BOYS DIVISION				
1. Youngsville	3	0	3	0
2. Bunn	2	0	5	1
3. Cardinal Gibbons	1	1	4	1
4. Gold Sand	0	2	2	2
5. Edward Best	0	1	1	1
6. Epsom	0	2	2	2
7. Louisburg	0	0	0	0
8. Franklinton	0	0	0	0
9. Oxford Orphanage	0	0	0	0
10. Wakelon	0	0	0	0
11. Apex	0	0	0	0
GIRLS DIVISION				
1. Bunn	2	0	6	0
2. Youngsville	2	0	2	0
3. Cardinal Gibbons	0	0	1	0
4. Epsom	0	1	0	1
5. Gold Sand	0	2	0	4
6. Edward Best	0	1	0	1
7. Louisburg	0	0	0	0
8. Oxford Orphanage	0	0	0	0
9. Wakelon	0	0	0	0
10. Apex	0	0	0	0

BANK WITH CONFIDENCE

ALL BANKING TRANSACTIONS STRICTLY CONFIDENTIAL

SAVINGS-CHECKING-LOANS-TRUSTS-INSURANCE

Citizens Bank & Trust Co.

Henderson, N. C.

"THE LEADING BANK IN THIS SECTION"

1889 - 80 YEARS OF SERVICE & SECURITY - 1969

Inflation Buster!!

THE 1970 MUSTANG

MUSTANG GRANDE 2 DOOR HARDTOP \$3028.00

8 CYLINDER

INCLUDES AT NO EXTRA COST

LUXURY HI-BACK BUCKET SEATS	NC
DELX 2-SPOKE-STEERING WHEEL	NC
COLOR-KEYED RACING MIRRORS	NC
WHEEL COVERS	NC
ELECTRIC CLOCK	NC
BRIGHT EXTERIOR MOLDINGS	NC
INSTRUMENT GAGES	NC
OUTSIDE DUAL PAINT STRIPES	NC
COLOR-KEYED CARPETING	NC
FLOOR-MOUNTED SHIFT LEVER	NC
FIBERGLASS BELTED TIRES	NC

LIGHT IVY YELLOW /2/	26 00
BLACK VINYL ROOF	201 00
SELECT-SHIFT CRUISE-O-MATIC	30 00
/5/ E78x14 BELTED WSW TIRES	95 00
POWER STEERING	61 00
AM RADIO	32 00
TINTED GLASS-COMplete	\$ 445 00
TRANSPORTATION CHARGES	81 20
TOTAL	\$3554.20

YOU PAY ONLY **3054.00** Plus 2% State Tax

GRIFFIN MOTOR COMPANY

104 S. BICKETT BLVD., LOUISBURG, N. C.

N. C. Dealers License No. 1094

VILLAGE FISH HOUSE

(Across From Ford's Warehouse)

WE WILL BE OPEN THANKSGIVING DAY

SERVING TURKEY & DRESSING

PLATE \$1.50 11 A.M. to 9 P.M.

FAMILY PLACE - Also Take Out Orders

Phone 496-4467

CHRISTMAS GIVING TIME

USE OUR LAY-A-WAY OR CHARGE ACCOUNT

Free Monogramming On London Fog Coat Through Dec. 15

in Matching Maincoats by London Fog®

Two London Fog Maincoats, one in his wardrobe and one in hers, are specially designed to go together. Exclusive Calibre Cloth (65% Dacron polyester, 35% cotton) provides complete rain protection, and it's also wash-and-wear. These Maincoats can actually be machine washed and dried, and worn in less than an hour. And their classic region styling looks handsome and appropriate everywhere, and in all kinds of weather. Enjoy rainy days (and sunny days, too) in London Fog.

His: The London	Hers: The Duchess
Sizes: 6 to 18	Colors: Natural
36 to 46	Navy
	Olive

Fox's DEPT. STORE