

# THE ROANOKE NEWS.

ESTABLISHED IN 1866.

A NEWSPAPER FOR THE PEOPLE.

Terms of Subscription—\$1.50 Per Annum

VOL. XLIX.

WELDON, N. C., THURSDAY, MARCH 18, 1915.

NO. 47

## CASTORIA

The Kind You Have Always Bought, and which has been in use for over 30 years, has borne the signature of *Chas. H. Fletcher* and has been made under his personal supervision since its infancy. Allow no one to deceive you in this. All Counterfeits, Imitations and "Just-as-good" are but experiments that trifle with and endanger the health of Infants and Children—Experience against Experiment.

### What is CASTORIA

Castoria is a harmless substitute for Castor Oil, Paregoric, Drops and Soothing Syrups. It is Pleasant. It contains neither Opium, Morphine nor other Narcotic substance. Its age is its guarantee. It destroys Worms and allays Feverishness. It cures Diarrhoea and Wind Colic. It relieves Teething Troubles, cures Constipation and Flatulency. It assimilates the Food, regulates the Stomach and Bowel, giving healthy and natural sleep. The Children's Panacea—The Mother's Friend.

**GENUINE CASTORIA ALWAYS**  
Bears the Signature of

*Chas. H. Fletcher*

The Kind You Have Always Bought  
In Use For Over 30 Years.

## THE BANK OF WELDON

WELDON, N. C.

Organized Under the Laws of the State of North Carolina,  
State of North Carolina Depository.  
Halifax County Depository.  
Town of Weldon Depository.

Capital and Surplus, **\$55,000.**

For over 21 years this institution has provided banking facilities for this section. Its stockholders and officers are identified with the business interests of Halifax and Northampton counties.

A Savings Department is maintained for the benefit of all who desire to deposit in a Savings Bank. In this Department interest is allowed as follows:

For Deposits allowed to remain three months or longer, 2 per cent. Six months or longer, 3 per cent. Twelve months or longer, 4 per cent. Any information will be furnished on application to the President or Cashier.

**PRESIDENT:** W. E. DANIEL  
**VICE-PRESIDENT:** W. R. SMITH  
**CASHIER:** J. O. DRAKE  
**L. C. DRAPEL, Teller.**

**DIRECTORS:** W. E. Smith, W. E. Daniel, J. O. Drake, W. M. Cohen, R. T. Daniel, J. L. Shepherd, W. A. Pierce, D. B. Zollicoffer, J. W. Slesigle.

## CALOMEL DYNAMITES YOUR LIVER! MAKES YOU SICK AND SALIVATES

"Dodson's Liver Tonic" Starts Your Liver  
Better Than Calomel and You Don't  
Lose a Day's Work

Live up your sluggish liver! Feel fine and cheerful, make your work a pleasure, be vigorous and full of ambition. But take no nasty, dangerous calomel because it makes you sick and you may lose a day's work. Calomel is mercury or quicksilver which causes necrosis of the bones, Calomel breaks into sour bile like dynamite, crashing it up. That's when you feel that awful nausea and cramping. Listen to me! If you want to enjoy the nicest, gentlest liver and bowel cleansing yet ever experienced, just take a spoonful of harmless Dodson's Liver

Tonic tonight. Your druggist or dealer sells you a 50-cent bottle of Dodson's Liver Tonic under my personal name. Each guarantees that each spoonful will clean your sluggish liver better than a dose of nasty calomel and twice as much make you sick. Dodson's Liver Tonic is real liver medicine. You'll know it next morning because you will wake up feeling fine. Your liver will be working, sweet and delicious, your stomach will be sweet and healthy, regular. Dodson's Liver Tonic is entirely vegetable, therefore harmless and you feel salivate. It is the only vegetable medicine of its kind. Dodson's Liver Tonic instead of dangerous calomel now. Your druggist will tell you that the sale of Calomel is almost stopped entirely here.

## KEEPS YOUR HOME FRESH and CLEAN

**Duntley**

Combination Pneumatic Sweeper

THIS Swiftly-Sweeping, Easy-Running DUNTLEY Sweeper cleans without raising dust, and at the same time picks up pins, lint, ravelings, etc., in ONE OPERATION. Its ease makes sweeping a simple task quickly finished. It reaches even the most difficult places, and eliminates the necessity of moving and lifting all heavy furniture.

The Great Labor Saver of the Home—Every home, large or small, can enjoy relief from broom drudgery and protection from the danger of flying dust.

Duntley is the Pioneer of Pneumatic Sweepers—Has the combination of the Pneumatic Suction Nozzle and revolving Brush. Very easily operated and absolutely guaranteed. In buying a Vacuum Cleaner, why not give the "Duntley" a trial in your home at our expense?

Write today for full particulars

WELDON FURNITURE COMPANY



## TANNER'S ROOF PAINT

SOLD BY

Pierce-Whitehead Hardware Company,  
WELDON, N. C.

# Are You Going to the World's Greatest Exposition?

Marvels of Landscape, Sculpture and Architecture, Wonderful Exhibits at Huge Panama-Pacific International Exposition, San Francisco

LOW ROUND TRIP RATES AFFORD GREATEST OPPORTUNITY OF A LIFETIME TO TAKE WONDERFUL JOURNEY AND SEE FINEST DISPLAYS OF WORLD'S NATIONS

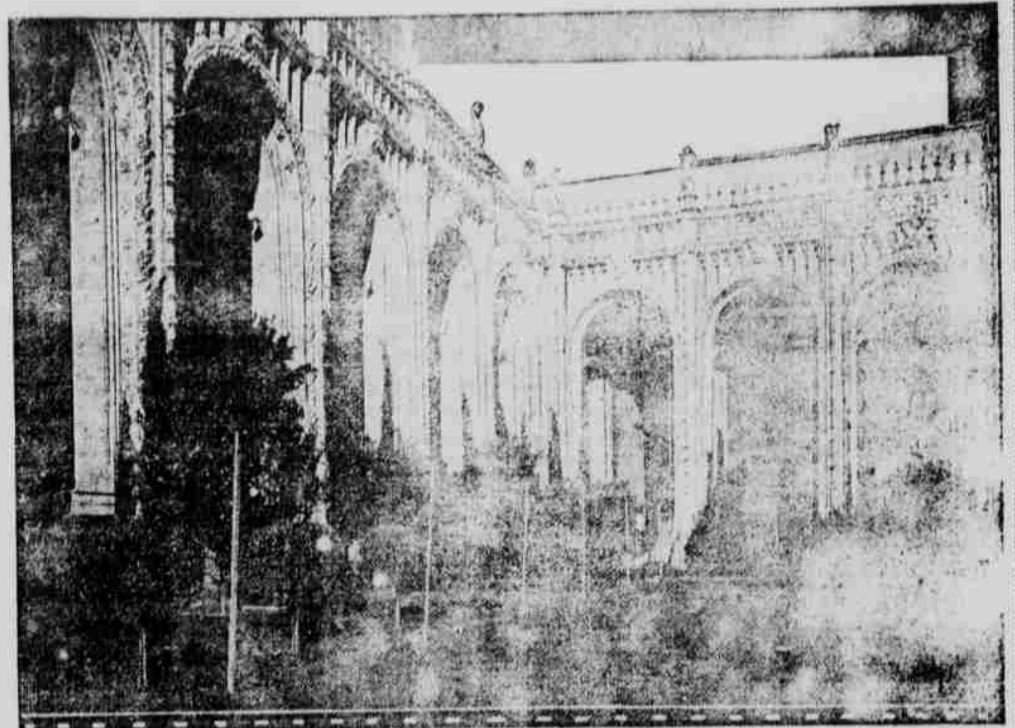
These pictures at best can indicate but feebly the indescribable marvels presented by the Panama-Pacific International Exposition at San Francisco to which the people of all nations are thronging.

Forty-two foreign nations, and more than 50,000 individual exhibitors, representing every country on the globe, have sent to this wonderful \$50,000,000 show the best of their present-day achievements which are now displayed in the eleven colossal exhibit palaces and also in the buildings of the state and nation represented. More than 100,000,000 has been invested in the "Zone," the 3,000-foot amusement street of this great fair, where the world's premier showmen are conducting the most wonderful and most original sight-seeing and pure-fun attractions ever assembled for any celebration on earth.

In order to put the opportunity of seeing this most marvelous of all expositions within reach of the greatest number of people the railroads have cut rates in half to and from San Francisco, and the hotel and restaurant associations of the city have agreed to keep their schedule of prices down to normal figures.

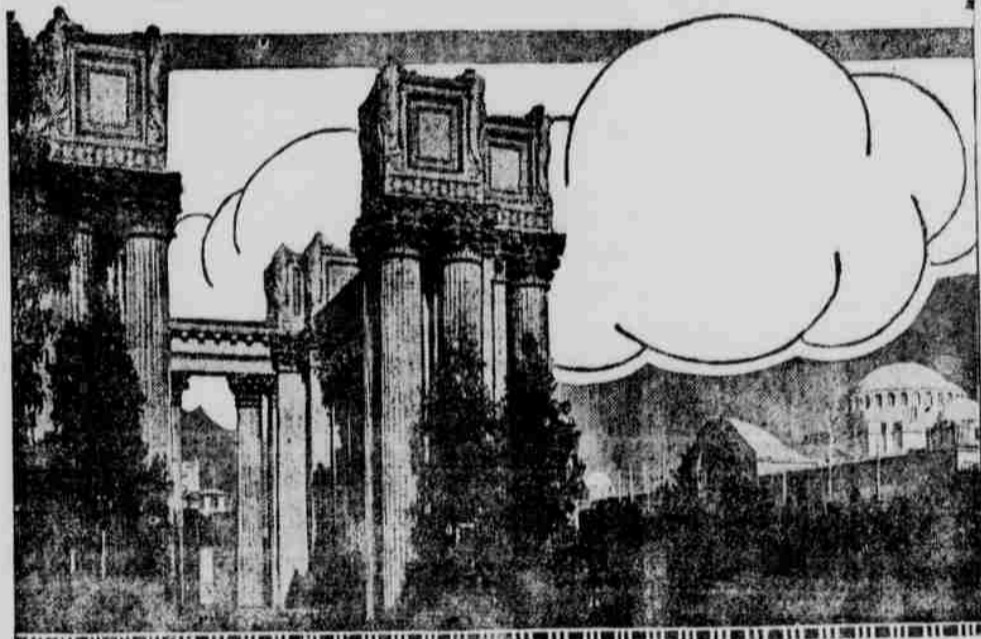
Complete information regarding this wonderful world's fair may be had free for the asking by addressing Manager of the Bureau of Publications, Press Building, Panama-Pacific International Exposition, San Francisco, California, who will forward to any address a beautiful sixty-page booklet, illustrated in colors, containing detailed information regarding the glories of this great celebration and a complete description of the Panama Canal.

TYPICAL SCENE IN ONE OF THE FOUR INNER COURTS



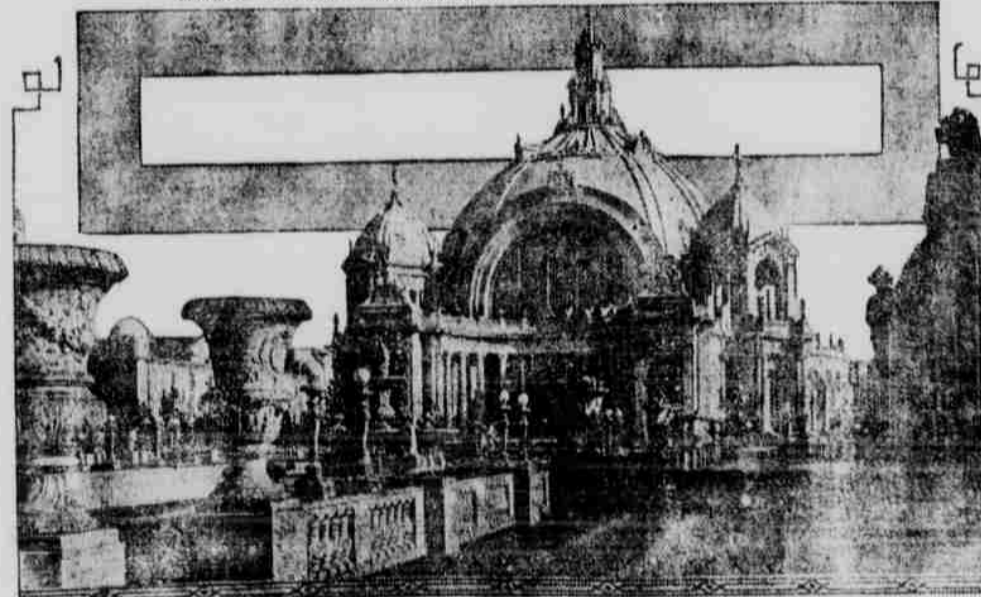
Detail showing the rich and Oriental suggestion in the embellishment of the Court of Abundance, at the Panama-Pacific International Exposition, San Francisco. In this court are orange trees in full bearing and rare flowers.

ONE OF THE WORLD'S MOST BEAUTIFUL ARCHITECTURAL SIGHTS



End view of Graeco-Roman colonnade extending 1,100 feet before the Palace of Fine Arts, Panama-Pacific International Exposition, at San Francisco, and curving in a graceful sweep along the shores of the Fine Arts lagoon. Surmounting these pillars are beautiful figures of women, gazing into an urn, expressive of Art and beauty. Eric Elleryhouse is the designer of these groups. Over the foliage and forestation of the Fine Arts lagoon can be seen the Half Dome of Philosophy and the grand central dome of the Palace of Education.

WHERE WORLD'S GREATEST PIPE ORGAN WILL BE HEARD



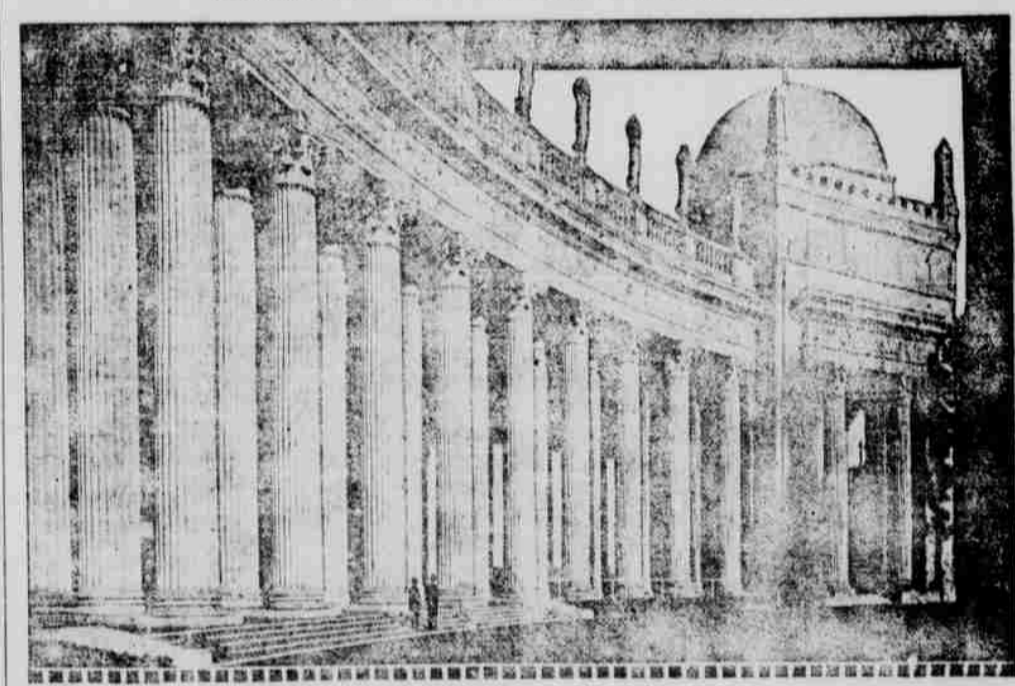
Festival Hall—Panama-Pacific International Exposition—from the south promenade of the South Gardens, the facade of the Press building showing at the extreme right. On the great organ in this hall—one of the six greatest organs in the world—Camille Saint Saens will play an original composition, and there will be recitals by Edwin Langere of London, Wallace Sabin and other maestros. This hall will center the intellectual, dramatic, musical and literary life of the exposition at San Francisco many of the 400 conventions of this year making it their assembly place.

THE BUILDING THAT USED FOUR CARLOADS OF NAILS



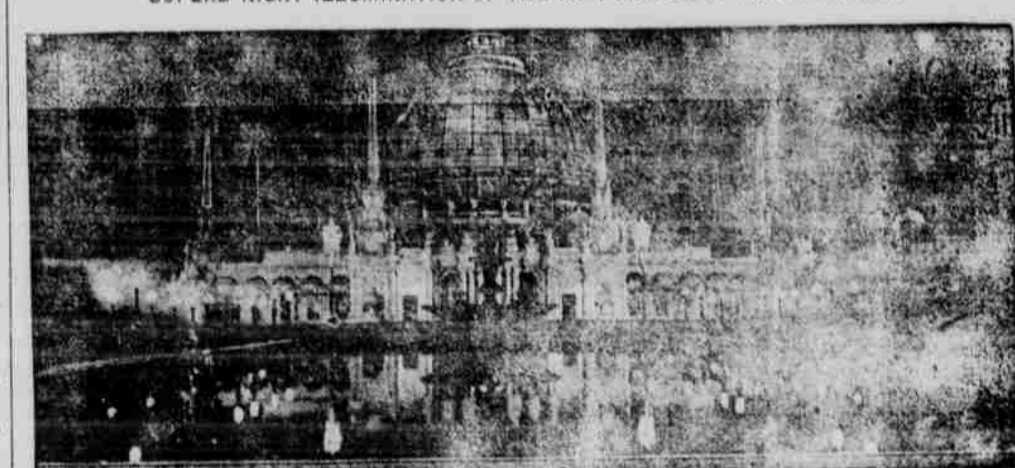
Where Lincoln Beachey made the world's first indoor aeroplane flight, the giant Palace of Machinery at the Panama-Pacific International Exposition, San Francisco. This enormous structure is surfaced with imitation Travertine marble which is used on the Pennsylvania Railroad Depot in New York, and other notable buildings.

REFINED BEAUTY SHOWN IN SCULPTURAL ADORNMENT



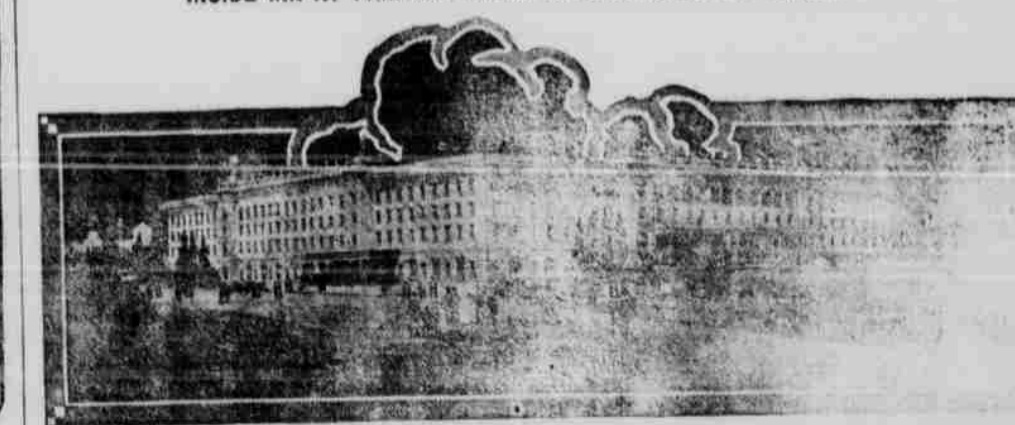
Details of colonnade in the Court of the Universe, showing frieze adornment and sculptured figures. These corridors are illuminated by the new indirect lighting system, the whole vast area of this court—900 by 600 feet—being lit in the same manner. Panama-Pacific International Exposition, San Francisco.

SUPERB NIGHT ILLUMINATION OF THE VAST PALACE OF HORTICULTURE



At night the vast glass dome of the Palace of Horticulture is played upon by rays of gigantic searchlight projectors set within the building. The globe, which is the largest hemispherical glass dome in the world and is one of the many marvels of the great Panama-Pacific International Exposition, then assumes all the colors of the rainbow. This photograph shows the great building at night with the rays of the searchlights casting the sign of the Zodiac over its gleaming surface.

INSIDE INN AT PANAMA-PACIFIC INTERNATIONAL EXPOSITION



View of architect's perspective of huge hotel on the exposition grounds at San Francisco. Visitors to the great world's exposition at San Francisco in 1915 will remember the huge Inn at San Francisco. This is similar large building at San Francisco, with a capacity of accommodating thousands of people. The Inn is within the exposition grounds, near the great Palace of Fine Arts.

## CASTORIA

For Infants and Children  
In Use For Over 30 Years

Always bears the Signature of *Chas. H. Fletcher*

No matter how homely a minister is a woman always says he has a good face.

Ah! The Invigorating Whiff of the Pine Forest!  
How it clears the throat and head of its numerous ailments. It is this spirit of Nourishment and Vigor from the health-giving Piney Forests brought back by Dr. Bell's Pine-Tar-Honey. Antiseptic and healing. Buy a bottle today. All druggists, 25c.  
Electric Bitters a spring tonic.

Health Promotes Happiness  
Without health, genuine joy is impossible; without good digestion and regular bowel movement you cannot have health. Why neglect keeping bowels open and risk being sick and ailing? You don't have to. Take one small Dr. King's New Life Pill at night, in the morning you will have a full, free bowel movement and feel much better. Helps your appetite and digestion. Try one tonight.

Wall flowers are society girls who have been nipped in the bud.

No Use to Try and Wear Out Your Cold It Will Wear You Out Instead  
Thousands keep on suffering Coughs and Colds through neglect and delay. Why make yourself an easy prey to serious ailments and epidemics as the result of a neglected Cold? Coughs and Colds sap your strength and vitality unless checked in the early stages. Dr. King's New Discovery is what you need—the first dose helps. Your head clears up, you breathe freely and you feel so much better. Buy a bottle today and start taking at once.

Now that the government has taken a census of the birds let it proceed to count the stray dogs running around Weldon.

Every time a man looks into a mirror he imagines he sees the reflection of a hero.

A man never tires of attempting to lower his record.

Too many sermons are aimed at pocketbooks instead of hearts.

Children Cry FOR FLETCHER'S CASTORIA

A woman's mind is as changeable as the shape of her hat.

Children Cry FOR FLETCHER'S CASTORIA

A woman's mind is as changeable as the shape of her hat.