



HEAD OF CHRIST.

H. Hermann, 1824.

THE FESTIVAL OF EASTER—WHY AND WHEN WE OBSERVE IT



EASTER Day, from which all others are reckoned, is always the first Sunday after the first full moon happens next after the One and Twentieth (21st) day of March, and if the full moon happens upon a Sunday, Easter Day is the Sunday after.

Advent Sunday is always the nearest Sunday to the Feast of St. Andrew, whether before or after. Rogation Sunday is five weeks after Easter. Ascension Day is forty days after Easter. Whit Sunday is seven weeks after Easter. Trinity Sunday is eight weeks after Easter.

But Easter Sunday is the great Festival of the anniversary commemoration of our Saviour's Resurrection, which for its antiquity and excellence challenges precedence of all other festivals.

The observance of this festival is as ancient as the times of the apostles, as is clear to those who are conversant with the affairs of the primitive church in those prime times, the only day being not alone the thing but the particular time when the festival is to be held.

A controversy between the different churches about the keeping of Easter Day was first introduced in which the people of the East kept Easter upon the same day that the Jews observed their Passover, viz. the fourteenth day of their first month, which answering our March, and this day of month whatever day of the week it fell, and from thence they were called Quartodecimans. Keeping Easter upon the fourteenth day after the appearance of the moon.

The other churches, especially those of the West, kept Easter upon the Lord's Day following the death of Passover. These latter churches pleaded apostolic tradition; the Apostles claimed the practice of the apostles themselves.

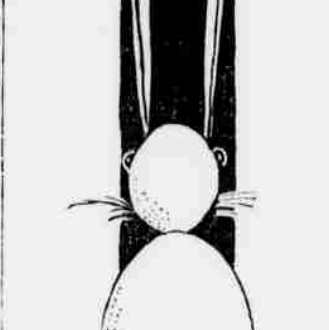
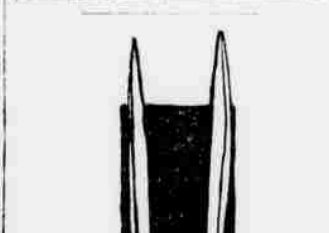
The great controversy was finally terminated by the Ecumenical Council of Nice, assembled by the Emperor Constantine, wherein it was ordained that Easter should be kept upon one and the same day throughout the world; not according to the custom of the Jews, but upon the Lord's Day, which decree was ratified and published by the Imperial Letters to all the churches; therefore, it became the imperative duty of all Christians throughout the world at that time to observe Easter on the day set apart by the said Imperial Letters.

The time of observance of the day has not been changed since, and the Christian world has for nearly sixteen centuries, without controversy, observed the first Sunday after the Jewish anniversary of the Passover as Easter Sunday, and continues to do so up to the present day and time. Easter Day being observed as the day commemorative of the resurrection of our Saviour, all Christians must believe that the eternal Son of God, who was crucified and died for our sins, did not long continue in the state of death, but on the third day, by His infinite power, did revive and raise Himself, by reuniting the same soul to the same body which was buried, and so rose the same Man.

Hope is a beautiful meteor, and like the rainbow, it is not only lovely because of its seven rich and radiant stripes, but as the memorial of a covenant entered into between man and his Maker, telling us we were born for immortality, destined, unless we suppress our greatness, to the highest honor and noblest happiness. Hope proves man deathless. It is

It is not good that a man hope for wealth, since riches profit not in the day of wrath; and it is not good that he hope for worldly things, since the mean and mighty go down to the same burial. But it is good that he hope for salvation; the meteor then gathers like a golden halo round his head, and as he presses forward in the path of duty, no weapon of the evil one can pierce through that helmet.

"They that wait on the Lord shall renew their strength; they shall mount up with wings as eagles; they shall run and not be weary." Atlanta Journal.



Pin a Button that's made of two eggs. With a tail of white cotton. And legs that are glued on a plate. That were never meant to grace. But for Rabbits like me each child begs."



FRESH EASTER EGGS TODAY. From a German postal card.

Unique Suggestions For An Easter Party
The invitations should be written on a heavy quality of light, old red cartridge paper, and tied with willow-green rope silk, and sealed at the place of tying with deep malachite sealing wax. Extending from the upper left-hand corner to the lower right-hand corner in fancy lettering should be the words: "Who will sing an Easter carol? O pussy-willow?" At the left side, a little above the centre, should extend a row of six or seven cuts done in crayon or water colors, with their backs showing and long, straggly tails hanging down, every succeeding cut on the right growing smaller. Below this in the open space the invitation should be written. There should be a border of pussy-willow and cut tails done in oils or water colors around the invitation. The paper should then be folded over to about the size of a very large postal card, the silk cord put in place, the wax put on, and the address written on the outside of the invitation. The house decorations should consist of pussy-willow and cut tails, with lilacs banded or in jardiniere. There should also be nests of colored eggs, some down chickens and rabbits (outdoor fanned ones) in unexpected places. Refreshments may be as for any party.—Geneva March in the Woman's Home Companion.

The Best Way to Color Easter Eggs.
Procure packets of aniline dyes of various colors you desire: pink, light blue, pale green, yellow, crimson, and purple or native are effective. Dissolve the dye in hot water and boil the eggs in it until they are colored the shade desired. Make a large nest of moss, or of green crepe paper cut in strips, if you cannot obtain moss, and place the eggs in it as a centerpiece on the breakfast table. If you wish to give each child one egg as a keepsake have a little nest by each plate with the egg in it. Ladies' Home Journal.

The Oster Hase's Nest.
Easter-time is not complete for Germany little folk without an "Oster Hase's nest." It holds many a favor and present, serving the same purpose that Christmas stockings and wooden shoes do at Christmas-time.—Mrs. A. G. Lewis, in the Woman's Home Companion.

A Bad Investment.
The philanthropy of some men consists of giving a dollar to charity and spending ten to advertise the fact.

SOUTHERN FARM NOTES.

TOPICS OF INTEREST TO THE PLANTER, STOCKMAN AND TRUCK-GROWER.

Feeding Value of Cottonseed and Bran.
The protein in any article is the same whether that article is intended to feed poultry or swine. In a pound of cottonseed meal there is 6.768-1000 ounces of protein. Cottonseed can be fed very sparingly, as it is too rich. You cannot give more than five per cent. of such food a week, except with the usual food, when you may give it more frequently.

A Seed Corn Problem.
A subscriber wants to know whether it is better to shell the whole ear for seed or to discard either or both tips and butts. It used to be said by breeders and growers of seed corn that to discard the butt and tip grains the corn would "run out." In other words, the cob would stick out at either end of the ear. This is not the case, and has been proven by the best corn growers in the corn belt. If the ear is well covered at both ends with grains, they can come in both directions from discarding both butts and tips. We would advise this plan only in seed corn, and that will be the best plan to stand in the row. When the ears are plump and ready to be shelled, the ears should be shelled, and the tips and butts should be discarded.

Hints on Berry Growing.
In a garden bed strawberry plants can be set in rows fifteen inches apart with the plants fifteen inches apart in the row. Between each series of three rows there must be left an alley or walk two feet wide. All runners must, of course, be kept closely clipped from plants set this way, and indeed from all plants grown in the stool or hill system.

Bewberry plants should be set six feet apart. A good plan is to run the rows six feet apart and then cross them at right angles with rows the same distance apart. Right in the check, where the cross comes, the plants can be set, spreading out the roots well. Raspberries, blackberries and grape vines can all be set this way. Plants or vines set this way can be plowed both ways and the work almost entirely dispensed with in cultivating the crop.

A good way to apply manure or fertilizer to plants set this way is to drill it in the open furrow on the four sides of the plant and cover with earth. About the same manure can be used on the dewberries, blackberries and grapes as on the strawberries. O. W. H., in Florida Agriculturist.

To Teach Calves to Drink.
To teach calves to drink, we let our calves take the milk from the cow until they are a week old, then put them in a place out of sight of the cow, and when ready to feed the first time place a pail with the milk in the corner of the stable, supported by a board.

Skins With Two Pockets.
The analysis of a skin made up of sheep's wool shows that it is a combination of protein and carbohydrate. When reduced to the dry matter, it contains 10 per cent. of protein and 10 per cent. of carbohydrate. It is not a good food for the sheep, but it is a good food for the lamb. It is not a good food for the lamb, but it is a good food for the ewe. It is not a good food for the ewe, but it is a good food for the lamb. It is not a good food for the lamb, but it is a good food for the ewe. It is not a good food for the ewe, but it is a good food for the lamb.

locks. Yet it is not a perfect substitute for fish food, as it is not when there are no fish in the tank to feed upon.

The percentage of water in milk ninety per cent. makes it impossible for the hen to get enough of it to fully saturate the placenta of the chick.

New Southern Forage Crop.
The botanical name is Desmodium illinoense. It is a native of the Texas prairie. It is a summer-growing plant that thrives on most of the light soils found between the Trinity River and the Carolina throughout the Gulf States. It is a very hardy plant and will grow on all soils, but it is not a good plant for the soil of the South. It is a good plant for the soil of the North. It is a good plant for the soil of the West. It is a good plant for the soil of the East.



JAPAN CLOVER OR LESPEDEZA.

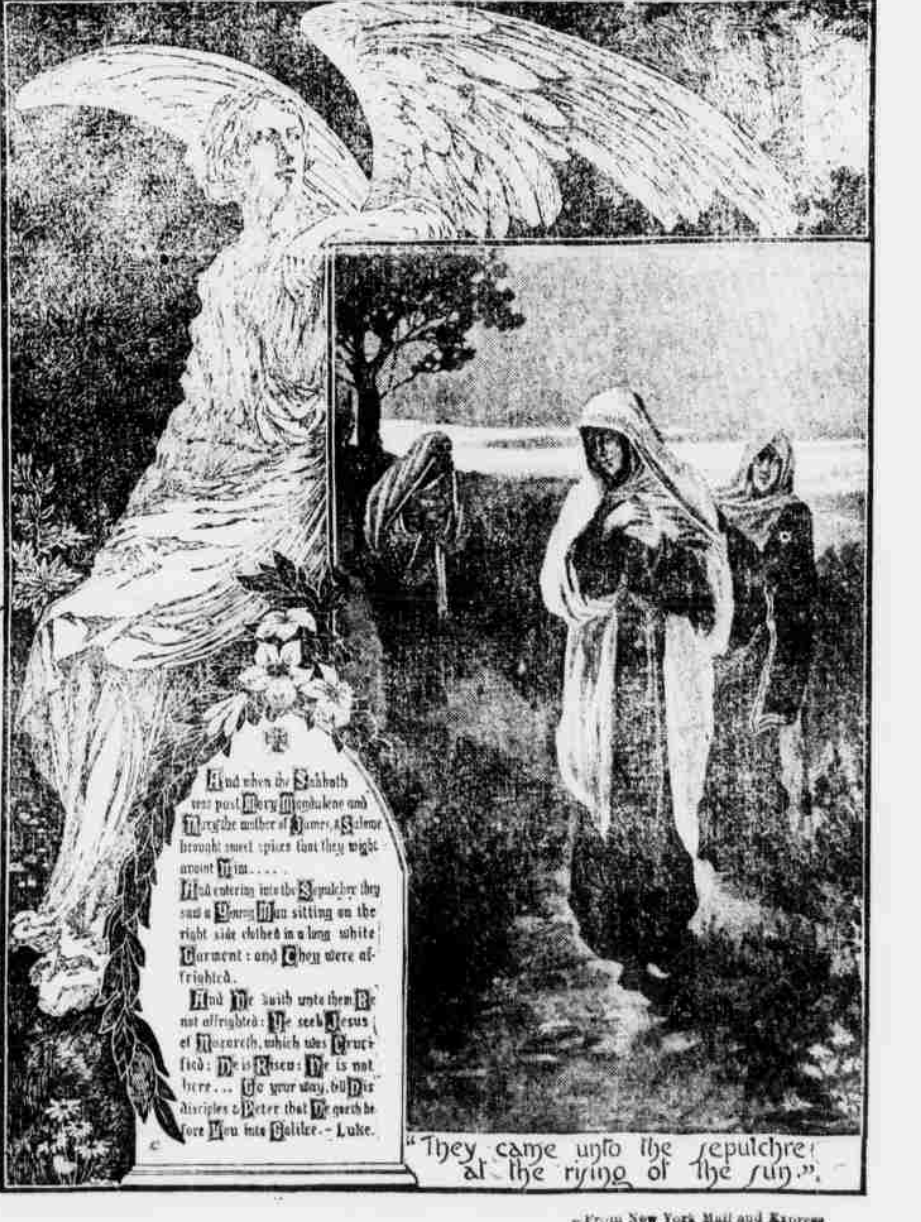
classes of live stock have been instrumental in scattering the seed westward. When this weed first makes its appearance in a community it is looked upon as a small weed and causes some discussion on account of its irritating effect upon horses. After a year or two, this tendency to irritate disappears, and the new clover is recognized as a valuable forage crop to the community. In other instances progressive stockmen have the seeds of the plant thrown in the community, where seeds have not been distributed by natural means, and these, in time, are disseminated throughout the soil to which the plant is suited by its numerous seedlings.

Seed should be sown in the spring, and upon well-prepared soil. The most profitable sowing is in the fall. It is a very hardy plant and will grow on all soils, but it is not a good plant for the soil of the South. It is a good plant for the soil of the North. It is a good plant for the soil of the West. It is a good plant for the soil of the East.

Heavy Yield of Cotton.
In order to insure a heavy yield of cotton you need to plow your land in the fall and harrow occasionally through winter and spring.

Minor Matters.
It is a cold day when the Chicago Teamsters' Union is unable to "start something." The latest war in Chicago caused by this organization is the demand that bar-keepers unionize, the barkeepers refusing to deliver beer at saloons where the bar-keepers are not members of a union. There are said to be hundreds of saloons that may be obliged to close up unless their drink dispensers agree to form an organization.

News of the Day.
Forty-one negro physicians were graduated from the medical department of the Walden University at Nashville, Tenn., at its commencement last Monday. Most of them hailed from Southern States, but one was from South Africa and one from the West Indies. President L. M. Dutton, of Clifton University, at Orangeburg, who made the address to the graduates encouraged them by saying that colored physicians are needed almost everywhere in this section of the country.



And when the Sabbath was past Mary Magdalene and the other women of spices went to the sepulchre. And entering into the sepulchre they saw a young man sitting on the right side, clothed in a long white garment: and they were affrighted. And he said unto them: Be not affrighted: He seek Jesus of Nazareth, which was crucified: He is risen: He is not here: ... Go your way, tell the disciples & Peter that He goeth before you into Galilee.—Luke.

"They came unto the sepulchre at the rising of the sun."

—From New York Mail and Express.