

WPA PROJECT FOR WOMEN IN COUNTY

(Continued from page one)

Small and the supply of books is limited, it is astounding to know the number of books that are read from it. Last summer the WPA bookmobile was loaned to a county. Through its service books were taken to practically every community in the county. We hope that we may have the same service this summer. On this WPA project women are paid to keep the school libraries open during school hours to lend books, to check in books that are being returned and to assist the children in looking up references. Worn books are mended to look like new by the bookmakers. In many instances the mended books are stronger than when they were new. This project works very closely with the North Carolina library commission and many school libraries have become standard (thus raising the standard of the school) with the work done by the women on the project.

Lunch Rooms

The WPA lunch rooms are set up primarily to serve hot school lunches for underprivileged children who either are given free lunches or are served lunches in exchange for produce which they bring and which is used in the preparation of the lunches. The selection as to who must have an absolutely free lunch is left to the teacher in the school. Less than 5 per cent of the lunches served are paid for in cash. We are told by County School Superintendents from various counties that these hot lunches which the children have had done much to keep up yearly attendance, has helped in disciplinary problems and has even helped toward fewer failures in the year's work. A child who goes to school all way without lunch can't be a good student.

During the summer months

GOOD RECORD



Commissioner of Agriculture W. Kerr Scott, (above), who is a candidate for renomination subject to the Democratic Primary, May 25. He is well known in this section and throughout the State as a practical and progressive farmer, well equipped to serve as Commissioner of Agriculture. As a farm leader, he has served as President of the State Farm Convention, and was recently selected by Dr. Clarence Poe, editor of the "Progressive Farmer" as "Man of the Year in Service to Agriculture."

WPA pays for the labor of women to make school gardens and to can the produce to be used in the lunch rooms during the winter. The newest methods are used for this canning and any woman working on this or the lunch room project is required to hold a Food handler's Certificate. We hope that every school in the county may soon have a lunch room.

Adult Education

It is an astounding fact that 10 per cent of the population of North Carolina can't read and write. It is true that the people falling in this category are usually people who are past forty years of age. The WPA has a project known as the Adult Education Project operating in this county that is teaching hundreds of illiterates. In addition to the classes in literacy these teachers also work with the schools in a home and school cooperation program; they have classes in homemaking; in group singing; they have debates and spelling bees. The people who work on this project must meet certain qualifications as to training and experience. An attempt is being made to unify this work by having the classes at certain centers throughout the county rather than having the teachers go to the students home.

Surplus Commodity Distribution
The surplus commodity distribution project, which is sponsored by the State Board of Charities and Public Welfare, with County Welfare Departments, as co-sponsors, was established for the purpose of the distribution of surplus commodities which are received from the Federal Surplus Commodity Corporation for needy persons and the commodities to be used in school lunches for underprivileged children.

Surplus commodities are allotted by the Federal Surplus Commodity Corporation to the State Board of Charities and Public Welfare, at no cost to the state. The commodities are allotted by the State Board of Charities and Public Welfare to the various counties for distribution to needy people.

The warehouses and county storerooms are supplied by the local welfare departments and the WPA provides all office force and labor necessary for the operation of these warehouses and storerooms. Surplus commodities are received in various forms, such as flour, prunes, rasins, beans, etc.

The commodity project has no authority to name the persons who are to receive the commodities, but allots commodities according to a schedule which is laid down by the Federal Surplus Commodity Corporation, in which families receive different amounts in accordance with the number of persons in the family.

All trucks, gasoline, and oil and packing supplies, office equipment and office supplies are supplied to the project by the State Board of Charities and Public Welfare.

A total of 450,377 pounds of food and 18,032 garments were distributed in Wilkes county from January 1, 1939, to December 20, 1939.

All of the above mentioned projects are sponsored either by the County Board of Commissioners, the County Board of Education or by the County Welfare Department.

Not only are these women working on WPA receiving money to do their jobs but they receive training as to how to do the job. Not only does the county benefit from the payrolls in the

county but every community benefits from the work these women do. So glad are what they are doing and how they do it.

The entire week of May 20th, will be observed by the sponsors of these projects for women as "Open House" week. Visitors are invited to visit any of the projects at any time but you are urged to go and see for yourselves especially during the week of May 20th for this work pays our community.

The following is the location of the projects:

Old Prison Camp in Wilkesboro: Sewing Room, Housekeeping Aide Center, and Handicraft Shop. Hours 8:00 to 3:20, Saturday 8:00 to 1:30.

City Hall in North Wilkesboro—Public Library. Hours 9:00 to 5:00.

Surplus Commodity Distribution Project located in the Building formerly occupied by the Cheese Factory, North Wilkesboro, N. C. Hours 8:00 to 3:30.

Adult Education Colored Center in Cairo. Hours 9:00 to 5:00. Lunch Rooms—at present making gardens.

NOTICE OF SALE

By virtue of an Order of the Superior Court of Wilkes County, signed by the Clerk thereof on the 12th day of October, 1939, in the case M. G. Walker, and wife, Lucile Walker, Mrs. Nina Smith and husband, J. E. Smith, N. R. Walker, and wife, Margery Walker, Mrs. Esther Pardue, and husband, T. O. Pardue, Mrs. Charity Walker, widow of Clay Walker, deceased, and Emily Walker, Minor, by her next friend, Mrs. Charity Walker, Mrs. Sadie Redding, and husband, Daniel Redding, ex parte, appointing the undersigned Commissioner to make sale of the lands described in the Report of the Commissioners filed in this case upon this day for partition among all the interested parties, except Mrs. Nina Smith, the undersigned Commissioner will on Saturday, May 25th, 1940, at eleven o'clock a. m. at the Court House door in Wilkesboro sell at public auction to the highest bidder for cash the following described land:

Beginning on a stake, Nina Smith's corner, located South 16 degrees east 366 feet from her beginning corner, and the beginning corner of the original tract, and running south 16 degrees east 134 feet to a stake; thence south 3 degrees 30 minutes east 191 feet to a stake, thence south continuing with the outside line the following courses, and distances, south 9 degrees 40 minutes east 262 feet to a stake, south 28 degrees 25 minutes east 178 feet to a stake, thence south 79 degrees 4 minutes east 1831 feet to a stake in a road; thence continuing with the outside line and the center of said road the following courses and distances, North 26 degrees 20 minutes east 247 feet, north 48 degrees east 96 feet, north 69 degree 40 minutes east 344 feet, thence leaving

road and with the outside line of the original tract the following courses and distances, north 8 degrees 10 minutes west 495 feet to a white oak, south 88 degrees 40 minutes east 53 feet to a cedar, north 8 degrees

east 267 feet to a pine, thence continuing with the outside line the following courses and distances, south 51 degrees 50 minutes west 1902 feet to a stake, thence north 16 degrees 10 minutes east 462 feet to a stake,

thence south 86 degrees 40 minutes west 416 feet to a stake, Nina Smith's corner; thence with her line the following courses and distances, south 8 degrees 4 minutes west 1025 feet to a stake; thence north 61 degrees west 464

feet to a stake, north 88 degrees west 937 feet to the point of beginning. Containing 37 acres more or less.
This 23rd day of April, 1940.
CHAS. E. GILBREATH,
5-16-40 (T) Commissioner.

Lowest Priced Used Cars In Town

It's Good Policy Today's HOT SHOTS

—to "trade up" a bit every year or so. It protects your USED CAR investment—keeps you with a better-looking—better-running car. And it's good policy to trade with a man you know is going to treat you RIGHT every time—He's your FORD DEALER.

<p>1939 Plymouth SEDAN</p> <p>★</p> <p>Here's an extra value—good tires and good paint—performs like a new car. Come quick. Don't let somebody else get this bargain.</p>	<p>1939 FORD SEDAN</p> <p>★</p> <p>New tires, new paint, in first class condition. In fact, a practically new car—a bargain at the price offered.</p>	<p>1939 Chevrolet SEDAN</p> <p>★</p> <p>Here's a car you'll want to own—going at a bargain price. Tires and paint almost good as new. Perfect performance—see it today.</p>
------------------------------------------------------------------------------------------------------------------------------------------------------------------------------------------	----------------------------------------------------------------------------------------------------------------------------------------------------------------------	--------------------------------------------------------------------------------------------------------------------------------------------------------------------------------------------

- 1938 DELUXE FORD SEDAN
- 1937 PLYMOUTH COACH
- 1937 FORD TUDOR
- 1939 FORD DELUXE SEDAN
- 1936 CHEVROLET COACH
- 1937 FORD FORDOR (Radio)

Yadkin Valley Motor Co.
FORD—MERCURY—LINCOLN ZEPHYR
NINTH STREET NORTH WILKESBORO, N. C.

NOW Pre-Season CLEARANCE SPECIALS



- 1 Kugezb Ohomb, Blahbath
- 2 Lonbolum Remz Zoom Evid
- 3 Xoom I Jar On J'erluxon
- 4 Termbh Werrmb
- 5 Quimb G. Ray
- 6 Ilc.

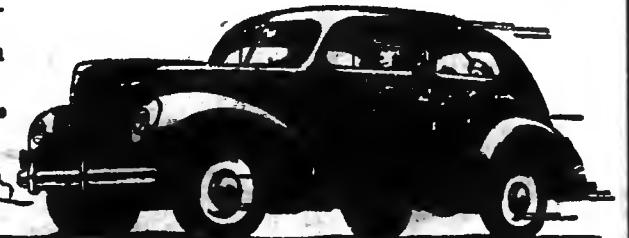
We Don't Sell "TALKING POINTS"

When Customers Come In and tell us they've found the 1940 Ford V-8 better than the ads say it is—that's how we prefer it to be. After all Ford is built on engineering principles, not "talking points".

The Ford V-8 is the Only car in its price class that gives you eight-cylinder smoothness and zip, with the economy of a six. Features found on the high-priced cars you can have now in the low-priced Ford.

That's Why We'd Rather use engineering terms instead of trick names when discussing the Ford V-8 for 1940. We can stick to the facts—and prove Ford performance and value. We don't have to "glorify" anything to make a sale.

Ford V-8 Owners already know these things. If you haven't driven a Ford in recent years, we'd like to have you discover them this week-end. We'll give you the keys to a 1940 Ford V-8 . . . and let that car show you how good it is!



Get the Facts . . . and you'll get a **FORD V-8**

Yadkin Valley Motor Company
NINTH STREET PHONE 60 NORTH WILKESBORO, N. C.

We, Too, Will Be

CLOSED

SATURDAY NIGHTS
After 7 O'Clock

We are glad to co-operate with other firms of our city in closing each Saturday night at 7 o'clock, in order that our sales force may enjoy the benefits of a shorter work day. Late store hours make it difficult to secure proper sleep and rest and get to Sunday school and church on time Sunday morning. Your co-operation by early shopping will relieve this situation, and be greatly appreciated by all concerned.

Steele's Jewelry

North Wilkesboro, N. C.