



OUR BOYS WITH THE COLORS

Cpl. Wm. Arthur Nichols Marine Mail Clerk
By SGT. WALTER WOOD
Combat Correspondent

Palau, Palau Islands—(Delayed)—The most popular Marine in his command unit today was Cpl. William Arthur Nichols, 27, of Wilkesboro, N. C.

Corporal Nichols is the outfit's mail clerk and he had brought letters from home up to the men in the line.

The mail was the first the Marines had received since leaving their training area weeks ago to strike this Jap held island.

"The men have been fighting for five days, now", said Nichols, "and they surely are happy to get some mail".

Before enlisting in August, 1940, Nichols was a foreman of Civilian Conservation Corps workers at Back Bone Rock Park, Shady Valley, Tenn.

Pvt. Morrison Transferred
Pvt. L. M. Morrison, who has been home on a 10-day furlough with his wife and children in Wilkesboro, left today to report at Camp Breckenridge, Ky., where he was transferred from Camp Wolters, Texas.

Navy Men Visit Homes
Earl Fairchild, son of Mr. and Mrs. Archie Fairchild, Olin Foster, son of Mr. and Mrs. O. F. Foster, and Bruce Elledge, son of Mr. and Mrs. Jim Elledge, all of the Purlear community, were at home on leave from Norfolk, Va., during the week-end.

William Handy In Hospital
William Handy, fireman first class, son of Mr. and Mrs. Connie Handy, of Halls Mills, is in the hospital at Shouemaker, Calif. William writes he is improving and hopes to come home soon. He has been in service two years and four months.

Lieut. Don Story Home On Thursday
Lt. Don Story, veteran pilot of the South Pacific air force, who has been stationed in South America for sometime, dropped in Thursday from Charlotte and spent the day with his parents, Attorney and Mrs. T. E. Story. Lt. Story brought an officer to Asheville and made a short stop at Charlotte so that he might visit his parents. He returned to the army air base (Morrison Field) at West Palm Beach, Fla.

Pvt. Ralph Williams Returns To Radio School
Pvt. Ralph Williams, son of Mrs. J. F. Williams, has returned to Madison, Wisconsin, where he is attending a radio school, after a visit here with his

WANTED—Large Quantity Irish Potatoes. Highest cash prices.
Tal J. Pearson, 10th Street North Wilkesboro. 8-14-44

with the former Miss Faye Wright, his son, Eric, and other relatives. Pvt. Williams is in the army air corps.

Pvt. Isaac M. Eller Is Home
Pvt. Isaac M. Eller, accompanied by Mrs. Eller, who is stationed at Camp Lejeune, spent the week-end here with his mother, Mrs. Virginia Eller, and other relatives.

563,928 Nazis Captured Since 'Invasion Day'

Six Allied armies have captured at least 563,928 prisoners since the invasion of France on June 6. Announced captives:

- U. S. First Army, 192,016.
- U. S. Third Army, 92,600.
- U. S. Seventh Army, 90,000.
- U. S. Ninth Army, 19,312.
- British Second Army, 75,681.
- Canadian First Army, 48,330.
- French Forces of the Interior attached to the British Second and Canadian First Armies, 18,927.

Total, 563,928. Figures for the first Allied airborne army which invaded Holland vertically never have been announced. The totals for the U. S. Third, Seventh and Ninth armies are nearly three weeks behind date.

Less Meat, Butter And Cream Is Seen

Washington.—The agriculture department forecasts shorter civilian supplies of meat, butter and cream during the rest of the year but promised continued large supplies of fresh vegetables, eggs and grain products.

Prospective large non-civilian demands are expected to curtail civilian meat supplies below the amount available during the last three months, and the quality will be "generally lower", the bureau of agricultural economics said.

Output of better quality pork will increase seasonally but no improvement in the quality of beef is anticipated.

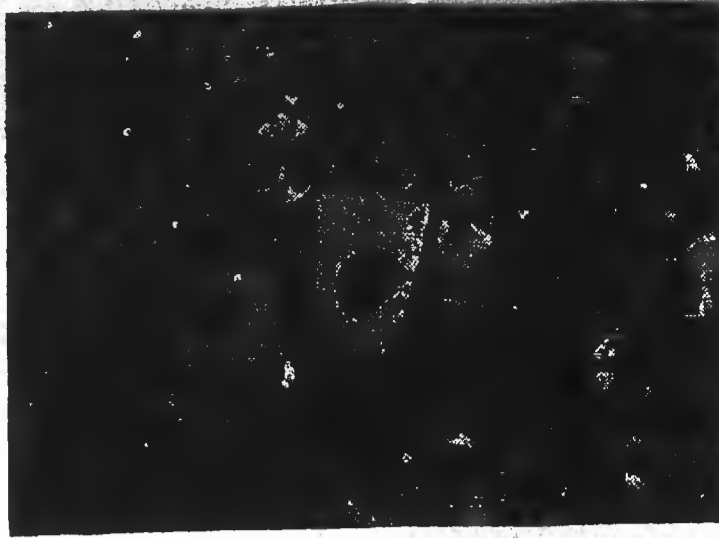
Butter supplies may well be even smaller than in the last month or two as a result of seasonally lower production and low distributors' stocks, BAE said. The bureau noted a recent trend toward maldistribution of butter with available supplies disappearing close to producing areas and shortages developing in urban areas on the Atlantic and Pacific seaboard.

Poultry production will increase seasonally during the fall and early winter, but still will be less than during the same period of last year. Meantime, ample egg stocks, particularly of the lower grades, will be on the market.

BAE commented that this somewhat gloomy outlook may be "altered by the progress of the war in Europe".

It also reported that this year's deciduous fruit crop will be larger than last year's, that a record citrus crop is in prospect, milk

Marine Vets Return Home



Home for the first time in 30 months, some 300 marines of the Second division, heroes of fighting the Japs on Guadalcanal, Saipan, Tarawa and Tinian, shouted with joy as their transport docked in San Francisco. Sixty-five of the returning heroes were casualties, sick or recovering from battle wounds. They display captured Jap flags.

supplies will remain about the same, and fats and oils with the notable exception of butter will be "relatively plentiful". Market stocks of fresh vegetables are expected to remain at a high level, with onions "particularly abundant". The civilian supply of potatoes for fresh consumption will be 15 per cent below prewar years and non-civilian takings are expected to cut into the available supply after the first of the year.

LEGION HAS A FINE MEETING

The regular October meeting of the local American Legion was held at the Auxiliary-Legion club house Friday evening with a good attendance. Major E. P. Robinson, the new post commander, presided at the business session, during which plans were made to have a social meeting the last of this month or early in November. A committee, composed of Pat Williams and S. L. Whitaker, was appointed, to make arrangements for the occasion.

The Legion has already received into membership several veterans of World War II, and any veteran of this war who has returned home from service and who has an honorable discharge, is urged to become a member of the post.

Wilkesboro-Union Methodist
Rev. FRED H. SHINN, Pastor
Union—Church school at 10:00 a. m. C. W. Mahaffey, superintendent.
Morning worship, 11:00 a. m.

Japanese Prisoners of Chinese



The picture of defeat, these Japanese soldiers who surrendered to the Chinese rather than be killed, are being led down to the Salween river, southwest China, to be ferried back to headquarters for questioning. They are only a small part of the prisoners who have been taken during the present Burma road campaign, which attests to its success.

BUY MORE WAR BONDS
Wanted—Large Quantity Irish Potatoes. Highest cash prices. Tal J. Pearson, 10th Street North Wilkesboro. 8-14-44

How your dollars help every member of this family



You will give his wife helping hands, kind words, good advice... when she has a difficult problem... when she's learning how to handle a war job along with her home job. Family service, hospital and clinical facilities, pre-natal and post-natal care.

You will give his little son safe and happy play while his mother is at work... necessary hospital care... services to keep a boy healthy, brave, strong—till daddy comes home again! When you give this once, you give many gifts. You help fighting men—and their fighting families at home. Give now. Give all you can.

You will give him an easy chair, music, companionship in U.S.O. clubs... stars of stage and screen to entertain him wherever he goes, through U.S.O. Camp Shows. Little things? Big things to him!

You will give his daughter good, wholesome activities under wise leadership... recreation... a chance to help the war effort... all the community social services that combat juvenile delinquency.

\$2.98 PAINTS A ROOM
The modern miracle wall finish
Kem-Tone
RIGHT OVER WALLPAPER AND MANY OTHER SURFACES
MIRACLE WALL FINISH
1. ONE COAT COVERS most wall-papers, painted walls and ceilings, wallboard, basement walls
2. APPLIES LIKE MAGIC
3. DRIES IN ONE HOUR
4. MIXES WITH WATER
5. NO "PAINTY" ODOOR
6. WASHES EASILY
7. LOVELIEST COLORS
\$2.98 PER GAL. PASTE FORM
Kem-Tone ROLLER-KOATER 89¢
Kem-Tone TRIMS As low as 15¢ a roll
PLASTIC PATCH 29¢
Repairs cracks 29¢ lb.
PAINT KITCHEN and BATHROOM WALLS with SHERWIN-WILLIAMS SEMI-LUSTRE \$1.00
Semi-gloss finish for kitchen and bathroom walls and all interior woodwork. Durable—washable. Quart
CARLTON'S HARDWARE
'Phone 109 - For Paint-Painter
SHERWIN-WILLIAMS PAINTS

GIVE GENEROUSLY TO
YOUR COMMUNITY WAR FUND
REPRESENTING THE **NATIONAL WAR FUND**
SOUTHERN BARGAIN STORE
Headquarters For All the Family's Fall and Winter CLOTHING AND SHOES
BARE'S DEPT. STORE
Savings and Satisfaction In WEARING APPAREL FOR THE FAMILY