

## Olive Is Given Wake Forest Publicity Job

Rev. Eugene Olive, former pastor of Baptist churches at Mount Airy, North Wilkesboro, Dunn and Chapel Hill, has been named director of the newly created department of public relations at Wake Forest College, it was announced last night.

Rev. Mr. Olive resigned as pastor of the Wake Forest Baptist church last night in order to take over his new post November 1.

Among other duties, Rev. Mr. Olive will seek gifts and bequests in connection with the planned removal of the school to Winston-Salem.

Wake Forest President Thurman D. Kitchin said that Rev. Mr. Olive will be responsible for giving to the public "through publications, correspondence, and visitation information about the college and its program."

**Alumni Secretary Job**  
He also will take over the former office of alumni secretary, held in recent years by Professor Jasper L. Memory in addition to his duties as a full-time professor in the department of education.

"An important phase of the work of the department," the announcement said, will be the enlisting of good will, patronage, and financial support of the

public in the expanding program of the college.

"Co-operation with the Baptist State Convention in its program of enlargement and removal of the College to Winston-Salem, as well as with the program of the college trustees for the same purposes, will be included among the functions of this department."

Rev. Mr. Olive went to Wake Forest in 1940 as school chaplain and pastor of the church there. For a number of years prior to that he served as a member of the college's board of trustees.

## Prospect Good For Slash In Tax Rate

Washington, Sept. 29.—The prospect for income-tax reduction applicable next January 1, either approved by President Truman or passed over his veto, was greatly enhanced when the Treasury department Friday declared in favor of permitting all husbands and wives to split salary incomes for tax purposes.

This recommendation makes it virtually certain that a community property amendment will be written into the next tax reduction bill passed by Congress, with the effect both of making a veto more difficult and adding votes to override a veto.

The purpose of the Treasury in urging that the community property principle be extended to all married couples was to avert a rush of states to adopt this system for themselves.

A few days earlier, the lawyers of the Bureau of Internal Revenue had acknowledged that community property laws passed this year by four states—Pennsylvania, Michigan, Nebraska, and Oregon—were perfectly valid. The effect of that ruling was a loss of approximately \$100 million in taxes otherwise payable on income during the last half of this year, and double that amount for 1948, if the discrimination is maintained that long. In all, 13 states now have adopted the community property system.

For accurate culling, chickens should be in good health and have been properly fed and managed prior to the time of handling.

During World War II 4,781,755 personnel served in the Navy, Marine Corps and Coast Guard compared to 681,980 in World War I.

## Church Committee Of Kiwanis Reports

On August 1, 1947 members of the Kiwanis Club of North Wilkesboro were given a questionnaire by the Committee on the Support of Churches in their Spiritual Aim. This questionnaire revealed that all of the 79 members, as of August 1st, were affiliated with some church. There were 64 members attending church services regularly, 10 occasionally, and 5 rarely. At Sunday school 44 attended regularly, 13 occasionally, and 22 rarely. Attendance at Sunday school by other members of the family was 61 regularly, 8 occasionally, and 10 rarely.

Five denominations were represented in the club—the Methodist, Baptist, Presbyterian, the Episcopal, and the Lutheran. Of the 79 members there were 29 Methodists, 28 Baptists, 15 Presbyterians, 6 Episcopalians, and 1 Lutheran.

The Methodist members showed 22 attending church services regularly, 3 occasionally, and 4 rarely. At Sunday school 15 attended regularly, 3 occasionally, and 11 rarely. Other members of the family attended Sunday school: 25 regularly, 2 occasionally and 2 rarely.

The Baptist members showed 22 attending church services regularly, 5 occasionally, and 1 rarely. The attendance at Sunday school was 17 regularly, 8 occasionally, and 3 rarely. Other members of the family attended Sunday school: 19 regularly, 5 occasionally and 4 rarely.

The Presbyterian members showed 13 attending church services regularly, and 2 occasionally. At Sunday school 10 attended regularly, 1 occasionally, and 4 rarely. Other members of the family attended Sunday school: 10 regularly, 1 occasionally, and 4 rarely.

The 6 Episcopalian members all attended church services regularly, 1 attended Sunday school

regularly, 1 occasionally, and 4 rarely. Other members of the family at Sunday school were 4 regularly, and 2 occasionally.

The 1 Lutheran member was regular in attendance both at church services and at Sunday school. Other members of the family were also regular in attendance at Sunday school.

The committee is made up of H. H. Morehouse, chairman, J. H. Whicker, sponsor, J. E. Caudill, Ira Payne and Rev. W. N. Brookshire.

## Only One Per Cent Of State Veterans Default On Loans

Winston-Salem, Sept. 29.—North Carolina veterans have an average of nearly 99 per cent in keeping up the payments on the GI Loans, the Veterans Administration reported today.

Former servicemen and women in this state have obtained

19,494 of these government-guaranteed loans since the program was first authorized in June, 1944, and only 258 veterans have failed to keep up the payments on their loans, according to Charles H. Ball, loan guaranty officer of the North Carolina regional Veterans Administration office. Of these 258 defaulted loans, 103 have been "cured" by the veterans, bringing their payments up to date,

and Ball added that the majority of the remaining 155 are expected to be current within a reasonable time.

The guaranteed loans obtained by veterans were for homes, farms, or business purposes. As of September 19, home loans totaled 18,437, farm loans 325, and business loans, 732. They amounted to \$92,918,206.

SUPPORT THE V. M. C. A.

**\$20 Worth of Beauty for \$10**  
YES, A \$20.00 WAVE FOR \$10.00

\$10.00 Permanents	\$5.00
7.50 Permanents	3.75
5.00 Permanents	3.00
5.00 Permanents	2.50
4.00 Permanents	2.00

SHAMPOO AND SET 40c UP  
No Appointment Necessary

**North Wilkesboro Beauty School**  
Over City Barber Shop North Wilkesboro, N. C.

# COMMEMORATING THE OPENING OF OUR FIRST STORE WE JOIN IN CELEBRATING THE

# 25<sup>TH</sup> Anniversary

# SALE

**WITH A TREMENDOUS DEMONSTRATION OF VALUE-GIVING**

**EASY CREDIT TO ALL AT NO EXTRA COST**

## Diamonds • Watches • Jewelry Gifts AT THRILLING SAVINGS

Check the inside pages and see for yourself the tremendous savings awaiting you. Our buyers searched the markets to find exceptional values at new low prices and we're, in turn, passing these greater savings on to you. The selections are better, the quality is finer and the savings are greater than you dreamed possible. In fact, no effort has been spared to make this the biggest anniversary celebration in our history. Come in tomorrow, use your credit and save!

You'll Be Wise to Lay Away Now for Christmas!

**4 Typical Examples of the Great Values — Hundreds More Inside**



**HEAVY GLASS ASH TRAYS**  
Special! **14c**

Select several of these fine glass ash trays at this amazingly low price. Decorative, easy to clean



**50-Piece Set Wm. Rogers & Son SILVERPLATE**  
**\$3350**

Lustrous, satin-rich silverplate, you'll cherish forever. Service for 8. Priced sensationally low for savings.

---



**MUSICAL POWDER BOX**  
Special! **\$595**

A beautiful accessory for a lady's boudoir. Plays a charming melody when lid is lifted.



**FINE STEEL POCKET KNIVES**  
Special! **39c**

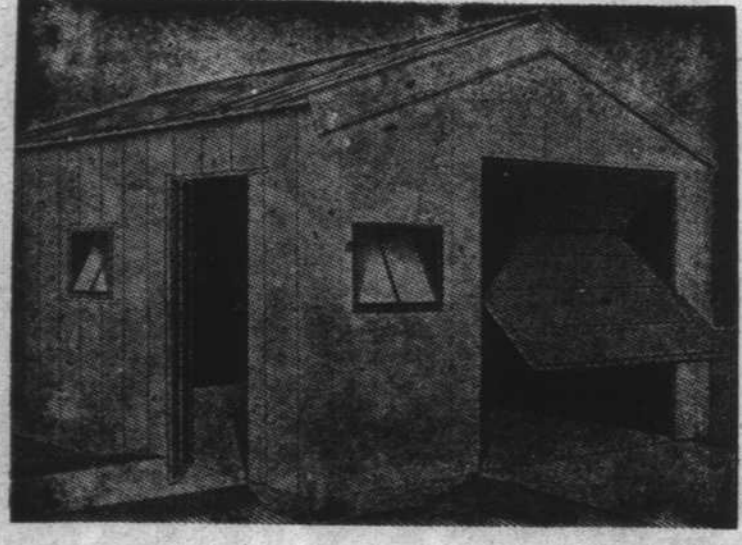
Look at this exceptional low price! Two fine steel blades—splendid for campers, hobbyists, Boy Scouts and general use.

AVAILABLE FROM STOCK  
PRE-FABRICATED . . . STEEL

## GARAGES

(In 1 and 1 1/2 Car Sizes)

Also Used For Utility Buildings, Service Buildings, Farm Building, Tool Sheds, Field Offices and Oil Stations



Attractive • Practical • Portable  
Termite Proof • Fire Resistant  
Weathertight • Permanent  
Erected In a Few Hours

We invite you to stop by and see one of these attractive buildings erected and on display at our plant in Winston-Salem.

WE HANDLE A COMPLETE LINE OF PRE-FABRICATED INDUSTRIAL STEEL BUILDINGS Of All Sizes

**SALEM STEEL CO., Inc.**  
STEEL FABRICATORS AND WAREHOUSE  
Dial 3-7361 1725 S. Hargrave St.  
WINSTON-SALEM, N. C.

**THE Jewel Box**  
"YOUR FRIENDLY CREDIT JEWELERS" INC.  
Next Door to Liberty Theatre  
North Wilkesboro, N. C.  
"B" Street

**FREE . . . No Purchase Necessary**  
Free to every adult who visits our store a lovely souvenir gift. No purchase necessary. Bring this coupon.

Name \_\_\_\_\_  
Address \_\_\_\_\_

**BRING THIS COUPON WITH YOU!**