

Information Given On Borer Control

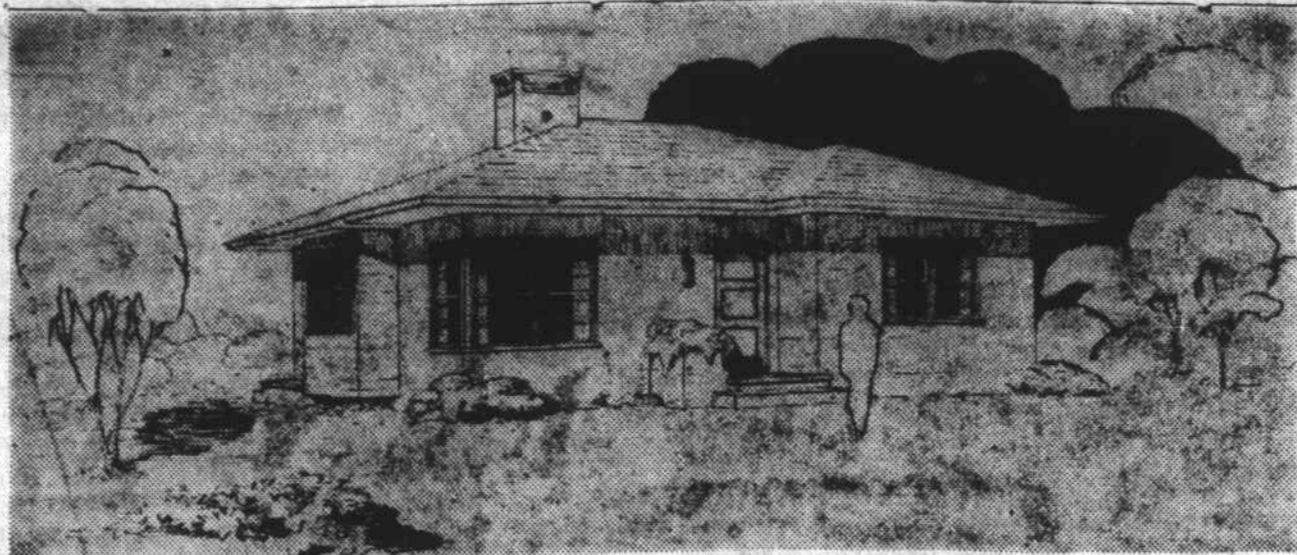
Ethylene dichloride and propylene dichloride emulsion for control of peach tree borers should not be applied until after October 15 for best results, says George D. Jones, entomologist for the State College Extension Service.

Earlier applications may not give effective control, Jones says, because the borers sometimes continue laying eggs late in the season, particularly when the weather remains warm.

Since heavy infestations of peach tree borers have been noted in many orchards this season, the entomologist urges peach growers to spray their trees with 15 per cent ethylene dichloride or 7 1-2 to 10 per cent propylene dichloride emulsion. For heavily infested trees, he recommends an initial application of 20 to 25 per cent ethylene dichloride.

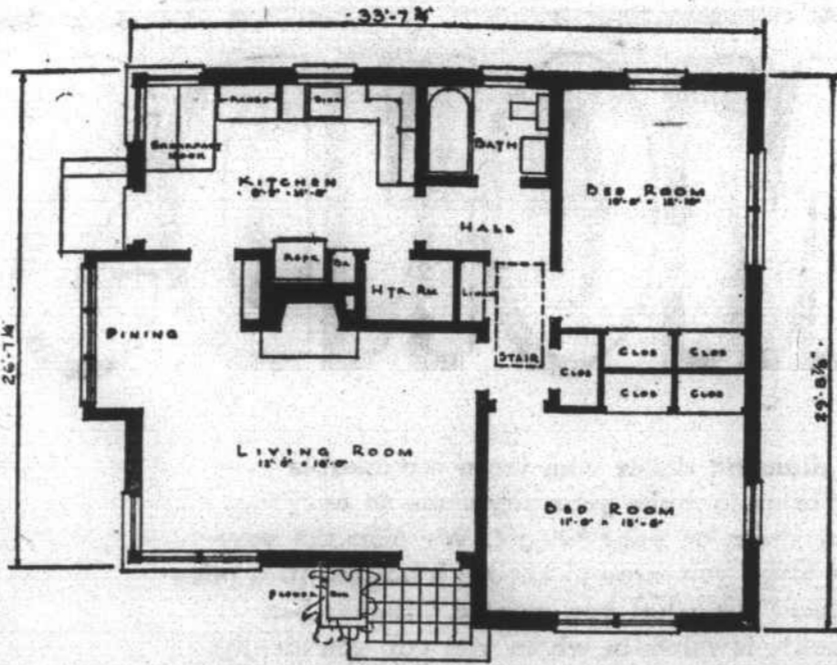
The emulsions come in concentrated form and must be diluted with water before use. After being diluted they must be stirred or agitated frequently. Some growers use a spray machine to haul the material in the field and keep the agitator going slowly to keep the material well mixed. If this practice is followed, the machine should be cleaned thor-

Brick House Plan No. 305 Has Economical Features



BRICK HOUSE PLAN NO. 301—Designed by F. Carter Williams, A. I. A., Raleigh

This appealing small home of modernized Cape Cod Colonial design with its economical step-saving interior arrangement provides a pleasing background for pleasant living. It would be a welcome addition and add "tone" to any community. The living room contains a large fireplace and large window areas. An ample coat closet is adjacent to the living room at the front entrance. The kitchen and bath are highly centralized in a step-saving relationship to the rest of the house. The two ample bedrooms with large closets provide highly efficient cross-ventilation and at the same time permit a varied furniture arrangement.



oughly before use to eliminate any possibility that lime will come in contact with the solution. The presence of lime may cause a breakdown of the emulsion.

Enough materials should be applied to moisten the soil all the way around the tree. This will be approximately 1-8 pint for a tree one year old of 1-2 pint for a tree six years old. In heavy soils it is recommended that dilutions not stronger than the following be used: trees six years and older, 15 per cent; trees five years and younger, 10 per cent.

Trees should be mounded immediately after the material is applied. Orchardists not familiar with peach tree borer control and use of these materials should consult their local county agent or write the Entomology Department.

State College, Raleigh, for more detailed information.

Woodsdale Farmer Likes Hybrid Corn

"If you don't want to have to build a new crib, don't fool with hybrid corn," says Major Brooks, negro farmer of the Woodsdale community, Person county.

"I told my boys this morning it will be necessary for me to cut my corn acreage in half if I continue to plant hybrids," Brooks commented recently to C. J. Ford, negro county agent for the State College Extension Service. The Person County farmer tried a hybrid variety last year for the first time, and he made more corn than ever before. This year he believes he is going to do even better.

According to the County Agent, Brooks' corn will yield close to 100 bushels per acre. It is planted in 3 1-2-foot rows and spaced 14 inches in the drill. Fertilizer has been applied according to recommendations.

Ford says two other farmers in the county—Gather Evans and West Smith, both of Route 1, Roxboro—also have outstanding corn crops. Evans and Smith live on adjoining farms, and each is trying to outdo the other in corn production. At least 45 farmers in the county have visited the two demonstrations.

A sale of purebred Duroc hogs will be held in Kinston on October 13.

Powerless Jet Is Landed By Marine

San Diego, Calif., Oct. 3.—A marine colonel landed a powerless jet fighter plane with little more than a flashlight and a prayer last night.

Lt. Col. Marlon Carl, former speed record holder, brought the F-9-F Navy Panther down from 25,000 feet in a 40-mile glide after a power failure.

He used the flashlight to watch the air speed indicator, the only instrument he had left. His other hand held the control stick.

When the cockpit windshield started to frost inside he had to drop the flashlight to wipe it off. "That was the only time I was worried," said Carl. "I needed three hands."

Carl was en route from Portland, Ore., to his home station at Cherry Point, N. C., via San Diego, where the electrical system failed.

That left him without engine, lights, radio or instruments. He couldn't even dump the 220 gallons of fuel left in the tanks. He had no way of notifying air fields of his plight.

Carl arrived over the lighted North Island Naval Air Station in San Diego Bay with 7,000 feet of elevation left.

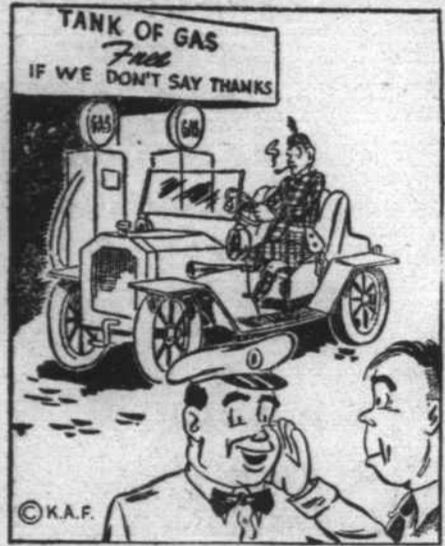
He dived on the tower to give warning and then, after making a wide curve to the runway, brought the plane down going about 150 miles an hour.

Carl, a veteran fighter pilot of the Pacific War, set a world's speed record of 658.8 miles an hour in 1947 in a jet Skystreak. The record stood for a year. It is now 670 miles, held by the air force.

A recent survey in 30 cities shows that more and more grocery dealers prefer that the rice and dry edible beans and peas they sell be packaged in transparent film.



BY L. L. PARSONS



He comes in every day trying to catch us

If more people would drive in every day to "put us to a test" we'd be even busier than we are now. We welcome you to test our service and courtesy.

Marfak Lubrication \$1.00

PARSONS' Texaco Service WE PICK-UP AND DELIVER Telephone 748

Do Your Floors NEED COVERING?

Mr. R. C. Goodwin will be happy to furnish estimates.

ASPHALT OR RUBBER TILE INLAID LINOLEUM

MASONITE WALLBOARD WALL LINOLEUM

Ideal Furniture Co.

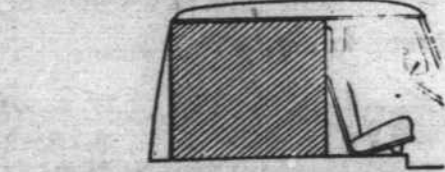
8 STREET TEL. 194

4 1/2 to 7 More Miles per Gallon*

Plus the Double Utility of a Car You Can Use for Passengers or Hauling



WITH ALL SEATS IN, the 'Jeep' Station Wagon gives you huge luggage and parcel space.



WITH SEATS REMOVED, you have 98 cu. ft. of load space— if tailgate is left down.

PASSENGER-CAR COMFORT... Roomy all-steel body with seats for six... 18% to 50% more glass area than competitive sedans... road-smoothing front-wheel suspension and low-pressure tires.

TRUCK-SIZE LOAD SPACE and practical for hauling—simulated-leather seats, interior paneling and steel floor are washable.

MORE ECONOMY... Overdrive standard equipment... extra miles on every gallon... long life... low upkeep.

Jeep Station Wagon

CITY SALES COMPANY

Telephone 483-J

Wilkesboro, N. C.

Welcome FARMERS--



A Richer Yield Each Year For YOU, Your FAMILY, and Your FARM...

Saving today means having what you and yours need—PLUS those gracious luxuries—throughout the tomorrows. Our savings plan is the sound way to acquire the machinery, extra land and cash necessary to your farming activities. Come in and discuss any of your financial problems with us—We offer convenient loans, too.

The Northwestern Bank

Member Federal Deposit Insurance Corporation

STOP MURDERING YOUR FEET!

City Club

smart... comfortable

DISTINCTIVE SHOES FOR MEN

\$10

PAYNE CLOTHING CO. 'B' Street North Wilkesboro, N. C. Back Up the Y. M. C. A. Drive For This City!