

Three Flashers Are Now Hitting Over 300 Mark

Three of the North Wilkesboro Flashers are now hitting over the coveted 300 mark.

Bob Wright, who has led the club practically all the year with the war club, is still leading with 331, but has slumped slightly in the past two weeks.

Dave Davenport has climbed past the 300 mark after shaking off a slump and is now hitting 309.

Bob Hite, who has hit his stride in recent games, is above the 300 mark with 303. Cecil Fogleman has a 500 mark but played in only three games before he was injured. John Childers, a pitcher, is also over 300.

Following are unofficial averages for the season through Monday night this week:

Bob Wright	332
Dave Davenport	309
Bob Hite	303
Horace Hubbard	250
Wayne Davis	205
Ed Morton	251
Eddie Bowman	249
Cecil Fogleman	500
Bill Hamlin	230
Charlie Morant	244
John Childers	312
Dewey Wolfe	157
Gary Thornburg	150
Bob Thompson	130
Ralph Littman	200

Revival At Adley Methodist Church

Revival services at Adley Methodist church will begin Sunday evening, July 30, 7:45 o'clock, and continue through the week with services each evening. Rev. W. C. Crummitt, pastor at Union Grove, will assist the pastor, Rev. J. L. A. Bumgarner. All are invited to the services.

ADMINISTRATOR'S NOTICE

Having qualified as Administrator of the Estate of L. L. Carlton, deceased late of Wilkes County, North Carolina, this is to notify all persons having claims against the Estate of said deceased to exhibit them to the undersigned at Boomer, N. C. Route 1 on or before the 13 day of July 1951, or this notice will be plead in bar of their recovery. All persons indebted to said Estate will please make immediate settlement.

This is the 15 day of July, 1950. CHARLES W. CARLTON, Administrator of the Estate of L. L. Carlton, deceased. 8-21-6t(T)

SPORTS BRIEFS

Two of the best pitching prospects in the Blue Ridge league this year are Elkin's John Fyecha and Radford's Tom McCauley. Both have fast balls so necessary for major league hurling. . . . Jim Secaffo's son at Wytheville has had polio. Jim is the second baseman. . . . Tex Grigg, manager at Galax, is deputy sheriff in Texas. . . . Recently he lost his wallet with his deputy sheriff's papers. He lost it at Elkin. . . . Mt. Airy's baseball status must have been rejuvenated. The Granite City had its largest crowd Monday night and the team responded with a resounding victory over Elkin. . . . The Colonial class B league has folded because of poor attendance and bad weather. . . . The Coastal Plains league in the eastern part of the state is in dire shape because of excessive rain. One team played only one home game in 15 days. . . . Baseball chain systems have a greater part of the talent cornered and independent clubs are finding it harder and harder to get rookie players who can compete with what the major league chain outfits have signed.

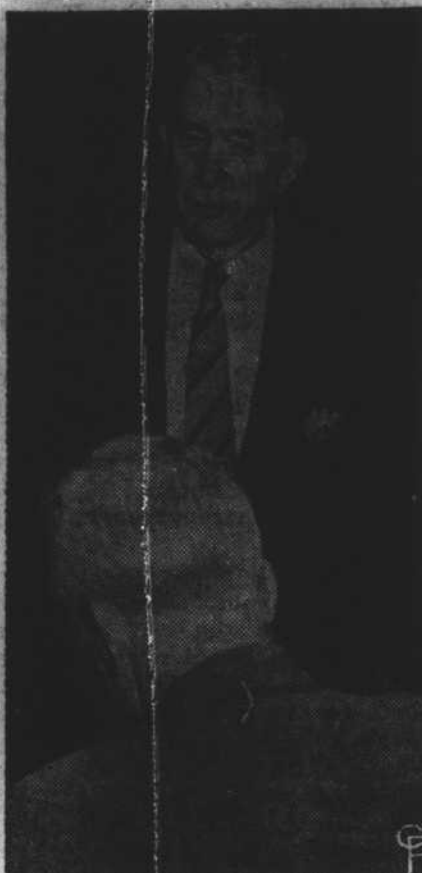
Breaks — Someone said the winning teams make their own breaks. They also seem to get many not of their own making. At Elkin Saturday night a ground ball which North Wilkesboro players said hit an Elkin baserunner went all the way through and rolled under the right field fence. Both runners scored. The official rules defines such a play as good for two bases only. The plate umpire called six pitches on the socks as strikes. Four were against North Wilkesboro. Three times runners were on base. Twice the low calls prevented walks. Here Sunday in the second inning of the last game base runner Bob Thompson was hit by a batted ball. A runner on third could not score because the ball was dead. The break killed a promising rally.

Even the weather is against a losing team. In a game against Elkin here when the Blanketeers won 2-1 Wayne Davis powered a towering drive into right that looked like it was going over. At that exact instant a stiff wind blew down the river and stalled the ball in the air. It fell into a fielder's glove inside the fence.

It takes an average attendance of about 700 paid per game to operate a class D club. If it makes

LOCAL SCHOOLBOY GRID TEAMS SET TO TRAIN AT APPALACHIAN

Reports on Meeting



FOLLOWING a one-hour session of the Cabinet at the White House, Vice President Alben Barkley answers questions at a press conference. The Korean war situation was considered at length by President Truman and members of his Cabinet. (International Soundphoto)

a nickel it takes more than that along with every other possible source of income, including concessions, box seats, score card ads, fence ads and miscellaneous income. . . . Shorty Brown is expected to play with a class B club next year. . . . Sale of Elkin pitcher Fyecha is calculated to help the Elkin club out of a hole financially this year. . . . Jeff Davis, Mt. Airy pitcher who hails from Yadkin, maybe should become an outfielder. He has won two games with pinch hitter home runs with the bases loaded. One was against North Wilkesboro and the other against Radford. . . . Charlie Morant, North Wilkesboro left handed pitcher, is the smoothest fielding first baseman in the Blue Ridge league. As a pitcher he has speed and control, the first two essentials. Last year he was a high school star at Jacksonville, Florida.

One of the best outfielders in

Boone — Seven high school football teams of the Piedmont and Western sections of North Carolina will seek the cool mountain air of Boone for preseason practice at Appalachian State Teachers College beginning August 13, according to an announcement today by Appalachian Coach E. C. Duggins.

Coaches Presnell Mull of Lenoir, Marvin Hoffman of Wilkesboro, Jack Kizer of Lincolnton, Frank Austin of Concord, Earl Broome of Newton-Conover, Tom Boyette of North Wilkesboro, and Bob Nolan of Boone will send their charges through two weeks of intensive training on Appalachian practice fields, the session to culminate in four night games at the end of the second week.

Sponsored by the Boone Quarterback Club in co-operation with college athletic officials, the seven teams will be granted full use of school facilities, and a number of Appalachian gridgers now in Summer school will aid the various coaches in their training programs.

This Summer marks the third season during which this unique grid program has been in operation, downstate coaches grasping at the chance not only to escape late Summer heat but to gain valuable assistance from seasoned college players.

In addition to those high school teams now scheduled for practice games, Coach Art Ditt will bring his Marion Marauders into camp on August 24 for a tilt with Coach Earl Broome's Newton-Conover eleven.

Games now scheduled for the latter part of August are as follows, kickoff time to be at 8 p. m. at College Field:

August 23 — Boone vs. North Wilkesboro.

August 24 — Newton-Conover vs. Marion.

August 25 — Lincolnton vs. Wilkesboro.

August 26 — Lenoir vs. Concord.

the league is Wayne Davis, Lenoir youth now with North Wilkesboro. Wayne has power and speed and needs more experience at the bat. . . . Bob Hite remains the fastest man we have seen from the plate to first. He surprised Elkin's Patterson by beating out a "Sunday school" bouncer to second base Saturday night. . . . Bob Wright has a baseball player's heart. He has filled in at four positions, been injured twice and never gripes. He'll be up there in a few years.

Lenoir Optimist Club Horse Show Aug. 1st

Scheduled for two night performances, Tuesday and Wednesday, August 1st and 2nd, the second annual Lenoir Optimist Horse Show, will open at 8:00 p. m. at the Athletic field, with the top talent as to officials and exhibitors, assembled from throughout the horse show world of the Southeastern states.

Returning this year for the second time to manager the show is John L. Bowers, of Winston-Salem, N. C. who has managed a long string of highly successful horse shows throughout the Southern states during the past five years. He will be accompanied by his wife, Ruth, who serves as horse show secretary. Judging the saddle horses is D. T. Lambeth, of Lumberton, N. C. who has bred and trained many of the nation's finest walking horses, gaited ponies, and saddle horses. He took two champions to the great Lexington horse show of 1949, and was the trainer of the top winning horse of American Horse Shows in the walking horse division in 1948. His show ring, and training stable at Lumberton have housed many of the South's finest horses. He will be assisted as Junior judge of walking horses by Mrs. Dawson Morgan, social leader of Cookeville, Tenn., and owner of the mare who foaled the present world's champion walking horse. This mare is Merry Giovana, dam of Midnight Merry. Mrs. Morgan is chairman of the trophy committee of the Tennessee Walking Horse Celebration to be presented in Shelbyville early in September. H. Glenn York of Elkin is ringmaster and judge of jumpers. York has served as judge and ringmaster at leading shows in North Carolina and the South.

Entries are pouring into the horse show mail box, and portable stables are being brought to Lenoir to house the more than 75 horses expected to compete here. A standard ring will be erected near the ball diamond on Tuesday.

Persons interested in securing entry forms and prize lists may write the horse show manager John L. Bowers, Lenoir Optimist Horse Show, P. O. Box 255, Lenoir, N. C.

Harvard university has the biggest bass drum on any American campus. It is eight feet high and travels on a four-wheeled carriage. It is valued at \$8,000.

Farm Fresh! GUARANTEED!

Fresh Young Tender Okra . . . 2 Lbs. 25¢
U. S. No. 1 Cobbler Potatoes 10 Lbs. 35¢



Green Beans — 2 lbs. 27¢
Tender Crookneck Yellow Squash 2 Lbs. 17¢
Juicy California Sunkist Lemons Doz. 31¢
Fresh Green Crowder Peas 2 Lbs. 23¢

Here's Why Dixie-Home Produce is Your Best Buy!

1. Dixie-Home's quality control program for supplying you with the finest of fresh fruits and vegetables starts with the buying. Our expert buyers know WHEN and WHERE to buy better values for you!
2. After our produce buyers have carefully selected a given purchase, Dixie-Home's fleet of refrigerated trucks quickly move the merchandise from the point of purchase to our warehouse for further inspection.
3. In the warehouse, these garden fresh fruits and vegetables are carefully inspected again. During this inspection, the merchandise is kept in the most modern refrigeration rooms.
4. Fast refrigerated trucks deliver the fresh merchandise to the stores where it is again inspected before being placed on display. Careful selection, constant inspection and constant care make Dixie-Home's garden fresh produce YOUR BEST BUY!

King Mackerel Steaks Lb. 39¢
Dressed Virginia Pan Trout Lb. 29¢
Dressed Small Flounder Lb. 33¢

Everybody's Favorite—American KRAFT'S CHEESE 2 Lb. Box 89¢
Blue Bonnet Colored (1/2-Lb. Prints) Margarine Lb. 31¢

TRUE SOUTHERN HOSPITALITY IS OUR RULE FOR COURTESY



Saves Laundry—Charmin Paper Towels . . . 2 Rolls 29¢
Charmin Toilet Tissue . . . 4 Rolls 32¢
Soft Absorbent Charmin Facial Tissue 300 Ct. Box 19¢
Dixie-Home Quality Guaranteed Evaporated Milk 3 Tall Cans 33¢
Dixie-Home Quality Guaranteed Mayonnaise Pint Jar 35¢

Dixie-Home Quality Guaranteed Peanut Butter 24-Oz. 49¢
Serve on Plain Cake—Dixie-Home Apple Sauce 2 No. 2 27¢
Dixie-Home's Fresh Homemade POTATO SALAD Lb. 25¢

Calvert's Alaska Pink Salmon No. 1 Tall Can 39¢
Van Camp's Tasty Pork & Beans 2 16-Oz. Cans 25¢
Dixie-Home Quality Guaranteed Orangeade 46-Oz. Can 25¢

U. S. Good Boneless STEAK Lb. 99¢
For Stew Buy U. S. Grade Good Veal Breast . Lb. 39¢
U. S. Govt. Inspected and Graded Good Veal Patties . Lb. 59¢
U. S. Govt. Grade Good Shoulder Veal Chops . Lb. 59¢
Sliced Pickle and Pimiento Loaf Lb. 55¢
Sliced Macaroni and Cheese Loaf . Lb. 55¢
Makes Delicious Sandwiches—Sliced Liver Cheese Lb. 59¢
U. S. Good CUBE STEAK LB. 99¢

Soap of Beautiful Women CAMAY 2 Both Size Bars 22¢	Mild Soap Flakes IVORY Lge. Pkg. 27¢	Efficient Hand Soap LAVA SOAP 3 Med. Bars 27¢
Duz—Does Everything DUZ Lge. Pkg. 27¢	Personal Size IVORY SOAP 3 Bars 15¢	Chases Dirt OLD DUTCH 2 Cans 22¢
Wax Paper CUT-RITE 125-Ft. Roll 21¢	Shortening SWIFT'NING 3-Lb. Can 79¢	Veget-ble Shortening CRISCO 3-Lb. Can 85¢

GET IT NOW!

WE HAVE THE TRUCKS WE HAVE THE LIME BUT

- Steel Has Gone Up
- Gasoline Has Gone Up
- Tires Have Gone Up
- Lime Prices MAY Go Up

Demand May Exceed Our Ability To Deliver

PLACE YOUR ORDER TODAY — FOR YOUR AGRICULTURAL LIME REQUIREMENTS

We are in position at present to satisfy your needs in agricultural limestone, both in quantity and quality. Let us deliver and spread your lime now! Before trucks and tires become scarce.

Contact Your P.M.A. Office Before Placing Order

MAYMEAD LIME COMPANY

Shouns, Tennessee.

MAYMEAD LIME COMPANY
Shouns, Tennessee

Gentlement:

Please deliver to my farm in _____ County, _____ tons of lime

I want my Lime Dumped— _____ Spread— _____ On Pasture— _____ Meadow— _____

Plowed Ground— _____ About (date) _____

(Minimum Truck Load 5 Tons) (Please Indicate by X)

My farm is located _____

I will pay the truck driver your regular price, per ton Dumped in _____ County and 75¢ per ton additional if spread.

Signed: _____

Address: _____

This Order Mailed Today Will Get My Lime On The Way.