

Lake Regains Perch

RALEIGH - Having overcome a drastic decline in their numbers in recent years, white perch are now the second most numerous fish in Salem Lake according to a recent study of the lake's fish population by fisheries biologists with the North Carolina Wildlife Resources Commission.

Bluegills were the most numerous fish found during the 1978 lake study. Largemouth bass and catfish populations in the lake are also very good.

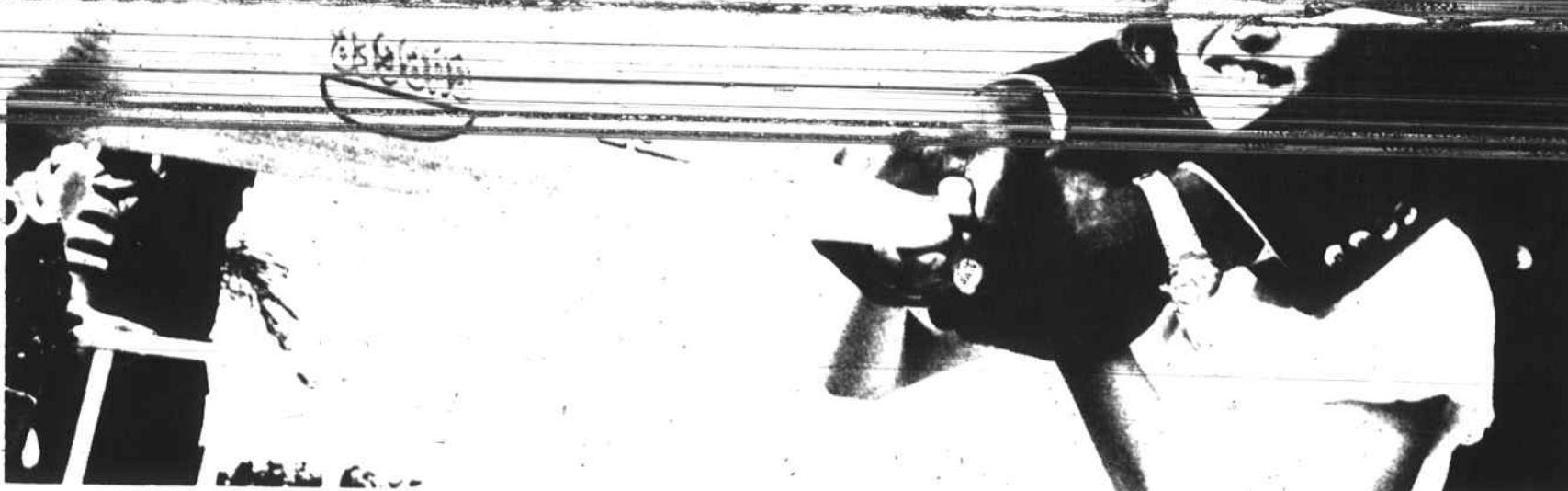
Salem Lake is a 360-acre lake within the Winston-Salem city limits. It was built in 1919 as a water supply lake for the city and was opened for fishing in 1949. It has been a popular fishing spot with area fishermen since.

According to Joe Mickey, a fisheries biologist with the Wildlife Resources Commission who conducted the study, the white perch population in the lake suffered a drastic decline starting around 1972. Because it takes two years for white perch to mature, the decline did not show up in catchable size fish until 1975.

In 1974 fishermen reported catching 3200 white perch from the lake; but by 1977, the adult population of white perch had declined such that only 84 were reported caught. Fortunately, other fish populations in the lake did not show a similar decline.

Mickey says that heavy siltation caused by construction within the lake's watershed between 1972 and 1974 probably affected the white perch's spawning efforts and contributed to the decline of the population. The installation of an aerator in the lake in 1973 could also have had an adverse effect on the white perch.

The siltation problem has much improved in recent years according to Mickey, and the analysis of water samples from the lake indicates no water quality problems for successful fish spawning and growth.



American League Most Valuable Player, Jim Rice of the Boston Red Sox, gives a youngster advice on hitting at a press conference announcing the more than 2300 Burger King restaurants' sponsorship of Pitch, Hit & Run, Major League Baseball's official youth program. Now in its third year, the national competition is open to boys and girls, 9-12. Approximately 2.4 million youngsters are expected to compete this year in the

program's three categories: pitching at a target, hitting for distance and running the base path for speed. Registration runs through May 12 at any participating Burger King restaurant in Winston-Salem. Hit & Run is co-sponsored by the National Recreation and Park Association and developed in cooperation with the President's Council on Physical Fitness and Sports.



Surely you are armed with a Statewide Residence Fishing License if you are fishing outside your home county; with or without natural bait. It is cheaper to buy the annual permit rather than a three-day permit.

Now if you get the notion to fish trout waters while visiting the mountains, make very sure you have a trout permit in addition to your statewide permit. The minimum size bass is 12 inches on most of the lakes that we will probably fish.

The exceptions are Lake Higgins in Guilford County, Lake Thom-A-Lex in Davidson County and Tillery in Montgomery County where the minimum bass size is 18 inches. If you want to enjoy your fishing trips, make sure, not guesses about size limits. There should be a copy of Inland Fishing Regulations in your tackle box.

This is the season for the basses. The white perch, which is really in the bass family, the white bass, the striped bass, and the largemouth bass, are coming into

the spawning season. There is no creel or size limit on the white perch which is void of stripes.

The white bass, striped but much smaller than the striper, has a creel limit of 25 fish but no minimum size limit; the striped bass has a creel limit of 8 and a minimum size limit of 12 inches.

The large mouth bass has a creel limit of 8 fish and a size limit of 12 inches, except where mentioned above; 18 inches.

The large mouth bass has a creel limit of 8 fish and a size limit of 12 inches, except where mentioned above; 18 inches.

The white perch and white bass in some waters have been known to grow to 15 inches and weigh up to 3 pounds. That of course is rare in the waters we fish. The stripers grow to monstrous sizes and at any size are something else on the end of light or heavy tackle. The largemouth, one of the hardest to get on a line, has always been known to give an account of itself. It is one of the most unpredictable creatures living in our streams and lakes.

"We should all be concerned about the future because we will have to spend the rest of our lives there."

BASKETBALL THRILLS & SKILLS

A Superstar's Philosophy
Can a small man make it big in a world where even a big man may seem small? Better yet, can a small man turn a perennial NBA "also-ran" into a championship contender? In the Midwest division the answer to both of these questions is "yes."



The Kansas City Kings, whose new coach this year is Cotton Fitzsimmons, have a rookie superstar who is long on ability although short in size for a basketball player. He's a 6'1" guard, Phil Ford, and while "percentage playing" is what many players try for, Ford often has a better idea.

The rookie is helping to prove that a basketball player's biggest asset is not long legs but a sharp mind. Last season (77-78) the Kings finished in last place in the Midwest Division of the NBA. This year they will finish first, and Ford is their choice for NBA Rookie of the Year.

A team leader, Phil Ford has a philosophy that could help thousands of fans who watch him, especially the young people. Says the superstar plainly: "I go out, play as hard as I can."



Getting old is sometimes hard to accept. Even though you don't like to think about it, it's a fact of life. But how you will live in your "golden years" is your own choice. And yours alone. Soaring inflation has made retirement for many people a time they dread. Statistics show that pension income and social security benefits combined are often less than half the income a person has been accustomed to making. For many, it's not enough. And every year your dollar buys less and less. It's a scary situation.

At The Northwestern Bank, we think tomorrow should be better than today. But the decision to start saving now is yours. We're here to help make your retirement years more comfortable and worry-free. Because after all, they should be the best years of your life.

It's time to get serious about saving.
THE NORTHWESTERN BANK

*from "Seed for Thought" by Charles Francis Kettering

Southern Coil and Oil Co. is featuring this BIG SAVINGS on a Quality Riding Mower

Rear Engine LAWN TRACTORS
This rear engine Yard-Man Easy Rider offers built-in extras to make lawn care a pleasure. Key electric starting, 12 volt battery with integral 100-volt charger, quiet comfort, with noise and heat fully vented through the hinged rear engine hood, easy handling with rack and pinion steering, 3 speed in-line shifting, on-the-go height control of the unit's floating deck, and sloping terrains. Molded, foam-filled contour seat.

Move-up to a Yard-Man

—8 H.P.
—34-in. Cut

See Our Lines of
—Garden Tools
—Fertilizer
—Grass Seeds
—Spreaders
—Aerators

Easy Rider
by **YARDMAN**

See Our Other YARD-MAN TILLERS & Push MOWERS

SOUTHERN COAL & OIL CO., INC.
532 NORTHWEST BOULEVARD (NORTHWEST BLVD. and CHERRY-MARSHALL)
Phone 722-6191

1926 to 1979 53 Years of Service

SAVE! SAVE! SAVE! SAVE! SAVE!

Manager's Clearance Sale

BR78-13 AS LOW AS **\$38.66**

PLUS \$1.98 F.E.T.

BF Goodrich Lifesaver® 78 Radial

- Traction block tread with inset wide grooves provides excellent grip on wet or dry surfaces
- Two steel belts for strength and bruise resistance
- WHITEWALL - 323 SERIES

FR78-14 AS LOW AS **\$27.33**

PLUS \$2.55 F.E.T.

BF Goodrich Lifesaver® XLM Radial

- Two steel belts for strength and bruise resistance
- Fuel saving radial construction
- WHITEWALL - 135 SERIES

GR78-14 AS LOW AS **\$28.66**

PLUS \$2.65 F.E.T.

BF Goodrich Lifesaver® XLM Radial

- Two steel belts for strength and bruise resistance
- Fuel saving radial construction
- WHITEWALL - 135 SERIES

J78-15 AS LOW AS **\$29.79**

PLUS \$3.06 F.E.T.

BF Goodrich Silvertown® Belted

- Fiberglass cord belts and polyester cord body for strength, stability, and a comfortable ride
- Belted construction for good mileage, traction, and handling
- Blackwall - 340 series

➔ Blems \$25.99 BF Goodrich Lifesaver® 78 Radials

SIZE FR78-15 PLUS \$2.55 F.E.T.

EMBLEM Quality 4 Ply Poly's

FOR SIZE B78-13 PLUS F.E.T. \$1.77 **\$22.19**

- 4-ply polyester cord provides strength, stability, traction
- Modern white sidewall styling
- Polyester construction insures a smooth comfortable ride

SIZE	REG. PRICE	RETCO'S PRICE	YOU SAVE
C78-14	28.19	23.45	4.74
E78-14	29.99	24.94	5.05
F78-14	31.93	26.54	5.39
G78-14	33.31	27.70	5.61
H78-15	33.24	27.65	5.59
M78-15	35.55	29.55	6.00
L78-15	38.06	31.66	6.40

Plus F.E.T. 1.77-2.93

Your Complete TIRE AND SERVICE CENTER

FRONT END ALIGNMENT
Pick Ups + \$3.00 **\$12.95**

BRAKE OVERHAUL
Drum Type Front or Rear **\$38.88**
COMPLETE FRONT DISC BRAKE JOB! **\$48.88**

Parts & labor included. Drum type brakes only. *Includes Turning Rotors.**
MOST MODELS OF AMERICAN CARS

Engine Tune-Up
HELPS ENSURE QUICK COLD WEATHER STARTS

No extra charge for air-conditioned cars. \$34.88-4 cyl. \$44.88-8 cyl. **\$39.88**

TRANSMISSION SERVICE
Includes 3 qt. transmission oil. Additional fluid extra. **24.88**

Oil & Filter Change, Lube
Includes up to 5 quarts Quaker State 30 WD Oil and Major Brand Filter. **\$9.95**

Car Air Conditioner Service

13.95

Test for leaks; check and add up to 4 cans of Freon; adjust all belts; check hoses; clean condenser; check final performance. Parts, additional material and major repairs extra.

RELY ON RETCO

Retco TIRE STORES
WINSTON-SALEM

3000 Ivy Avenue 919/722-4969
3830 Reynolds Road 919/924-9319

ALSO WITH LOCATIONS IN THESE CITIES: LINCOLNTON, COLUMBIA, CHARLOTTE, MAIDEN, MONROE, KANNAPOLIS & SHELBY

STORE HOURS: M-F 8:00-6:00 Sat. 9:00-1:00

Financing Available *To Qualified Individual

WE APPRECIATE YOUR BUSINESS!!