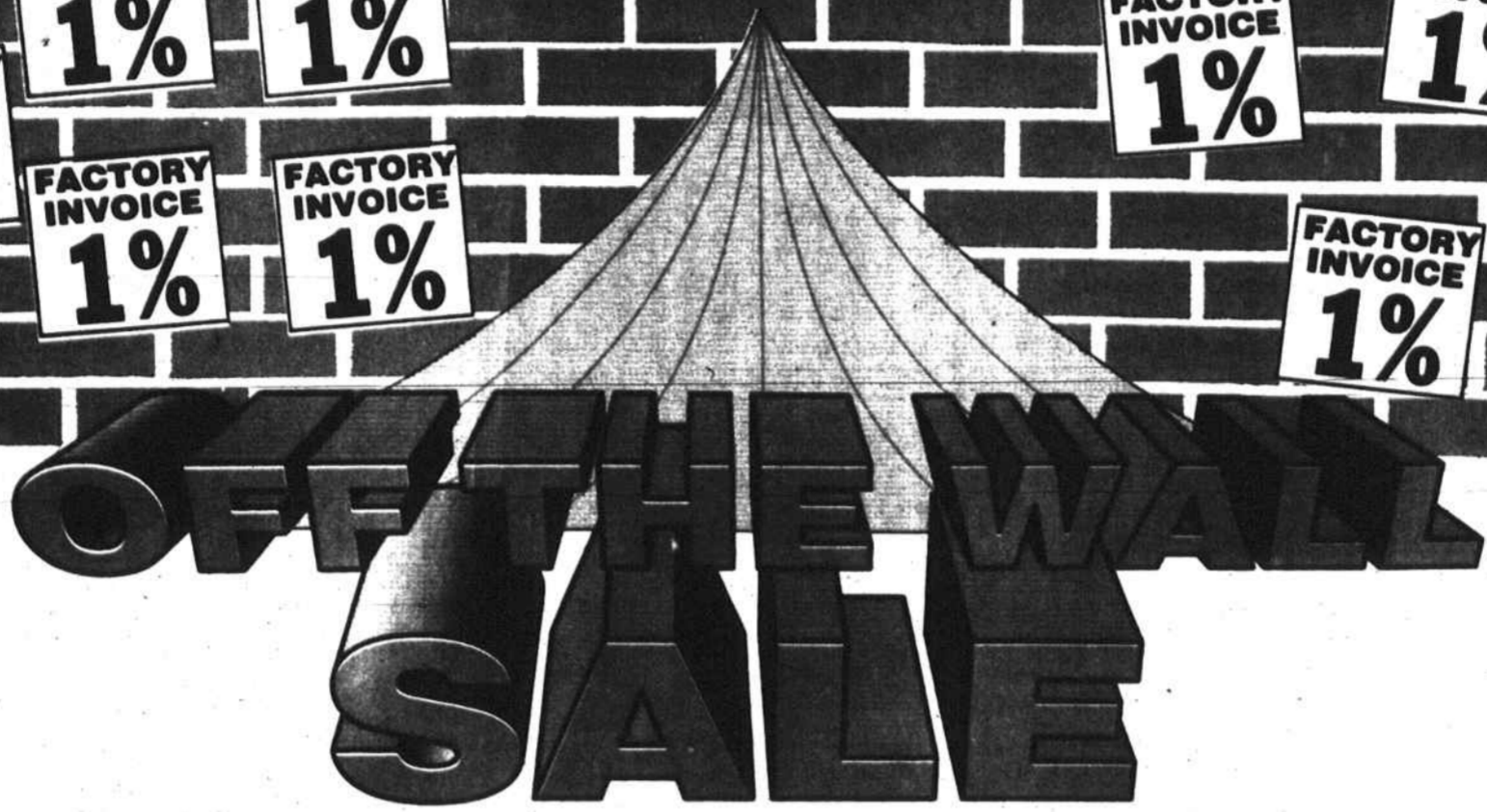
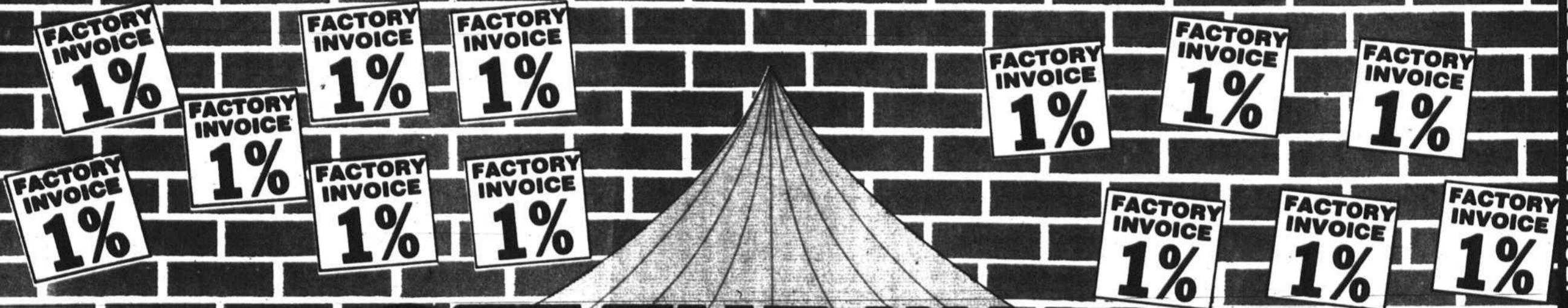
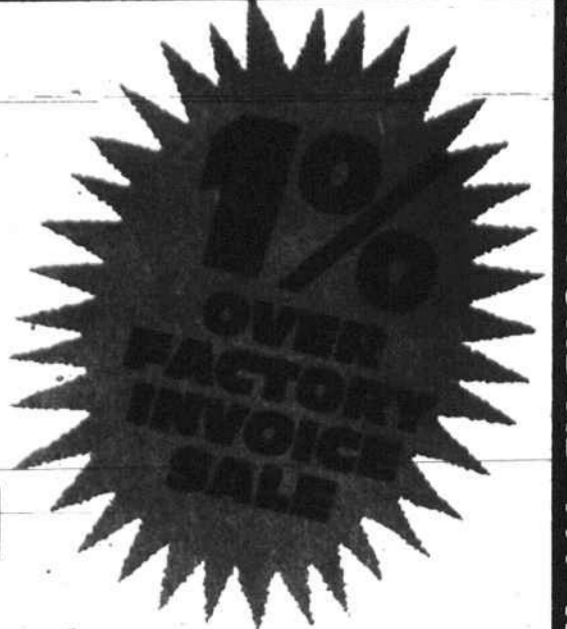


"CLIP ANY FORD AD ... WE'LL BEAT THE PRICE!" "CLIP ANY FORD AD ... WE'LL BEAT THE PRICE!"

FLOW FORD

You can buy a new Ford through conventional pricing or take a look at our

Off The Wall Pricing During Flow Ford's Special



HERE'S HOW IT WORKS:

1. Select the new Ford car or truck of your choice from our inventory.
2. Pull the invoice of the vehicle you select "off the wall" of our showroom.
3. Add 1% to the factory invoice cost.
4. Deduct the appropriate rebates and cash incentives. (List posted in showroom)

\$200 TO \$2000 IN REBATES AND CASH INCENTIVES ON MOST MODELS

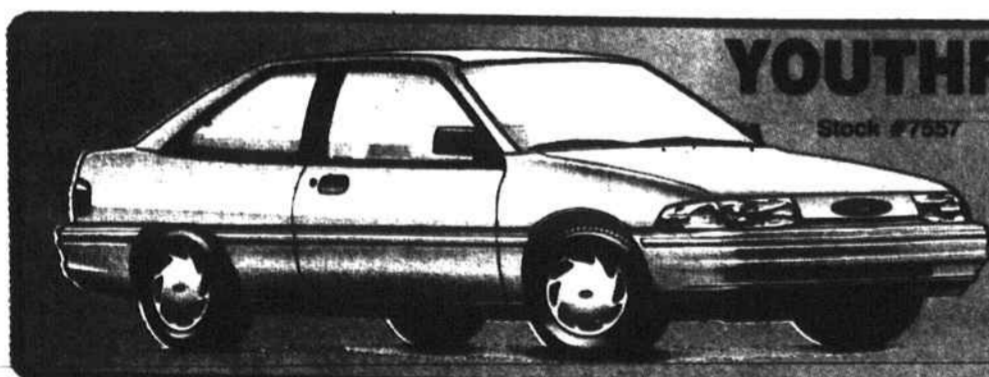
5. Add sales tax, tags, and fees.

ADDITIONAL REBATES FOR BUYERS UNDER 30 YRS. OLD, 1993 COLLEGE GRADS, AND ANYONE ENROLLED IN GRAD SCHOOL.

INTEREST RATES AS LOW AS

6.5%

WITH APPROVED CREDIT

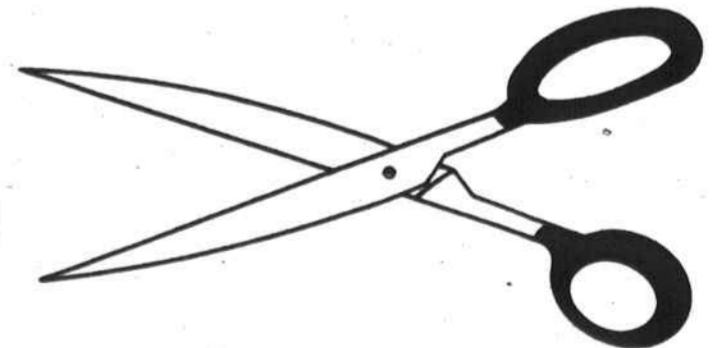


YOUTHFUL BUYER PLAN - UNDER 30 YEARS OLD

NEW 1993 FORD ESCORT
\$500 DOWN \$136.95 PER MONTH
CASH OR TRADE

Selling price \$7500. 60 months at 6.5% APR. Total of payments \$8217.00. On approved credit. Plus tax, license, and fees.

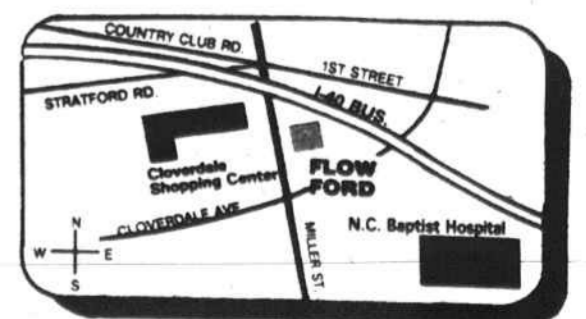
"Clip Any Ford Ad ... We'll Beat The Price!"



THESE PRICES APPLY TO CARS & TRUCKS IN INVENTORY ONLY.
OFF THE WALL SALE PRICES GOOD FOR A LIMITED TIME ONLY.

FLOW FORD

Located at the top of Cloverdale Hill across from N.C. Baptist Hospital and Cloverdale Shopping Center • Winston-Salem • 724-7441



SALES DEPT. HOURS
Mon.-Fri. 9:00 am-9:00 pm Saturday 9:00 am-6:00 pm

SERVICE & PARTS DEPT. HOURS
Mon., Wed., Fri. 7:30 am-6:00 pm
Tues. & Thurs. 7:30 am-8:00 pm
Saturday 9:00 am-2:00 pm

Prices do not include tax, license and title fee. All prices quoted are after factory rebate and dealer discounts. Dealer retains all rebates and incentives. Additional rebate available for 1st time buyers.

"CLIP ANY FORD AD ... WE'LL BEAT THE PRICE!" "CLIP ANY FORD AD ... WE'LL BEAT THE PRICE!"

"CLIP ANY FORD AD ... WE'LL BEAT THE PRICE!"

"CLIP ANY FORD AD ... WE'LL BEAT THE PRICE!"