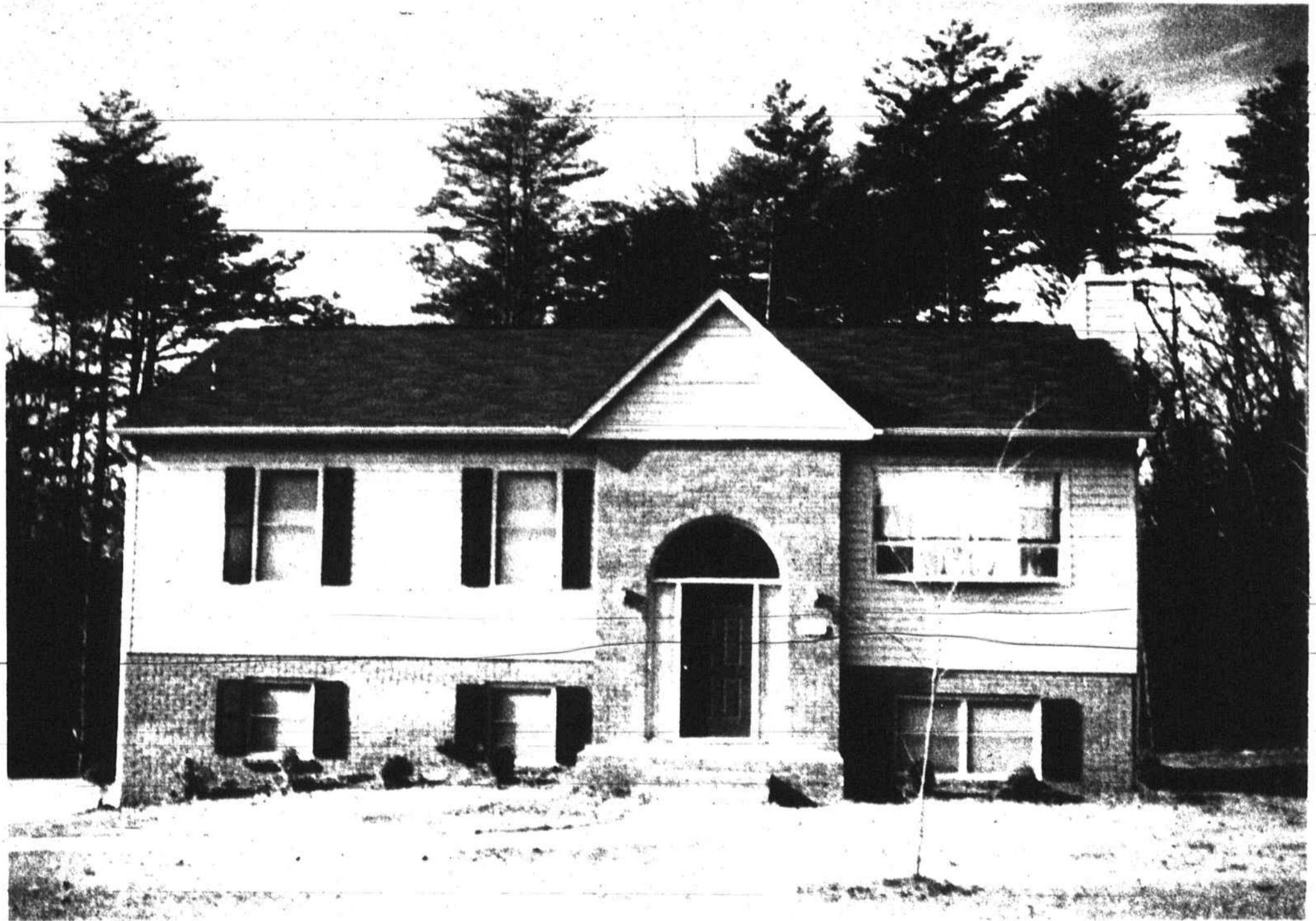


# Carver Glen

*A Planned, Limited Neighborhood*

*In one of the city's most desired locations: Carver School Road. There will be only 22 custom-built homes in this development. Prices ranging from \$85,000 to \$100,000.*



**C**arver Glen is a well-planned residential neighborhood in one of the most prestigious areas of the African-American community.

Situated on seven (7+) acres on Carver School Road between Viking and Lansing Drive. Carver Glen, just 2 1/2 miles north of Carver High School, represents the first complete residential development in the area since Monticello and Northwood Estates.

Carver Glen is your opportunity to locate in a safe, established community in a home custom-built to your satisfaction. Our homes will range in size from 1200 sq. ft. to over 1500 sq. ft., with

several split foyers, ranches and split levels designed for you to choose from.

Additionally, you may select among the many available options to make your new home uniquely yours.

Carver Glen also represents an excellent opportunity for first-time home buyers. We have several lending institutions that will gladly assist you in making your first home a reality with special financing and mortgage programs.

Homes in Carver Glen will sell fast. So, please contact us right away. Let us assist you today.

**EAST POINTE**  
DEVELOPERS

To select your home site and lot, please call  
Little & Associates, Inc • (919) 724-3419