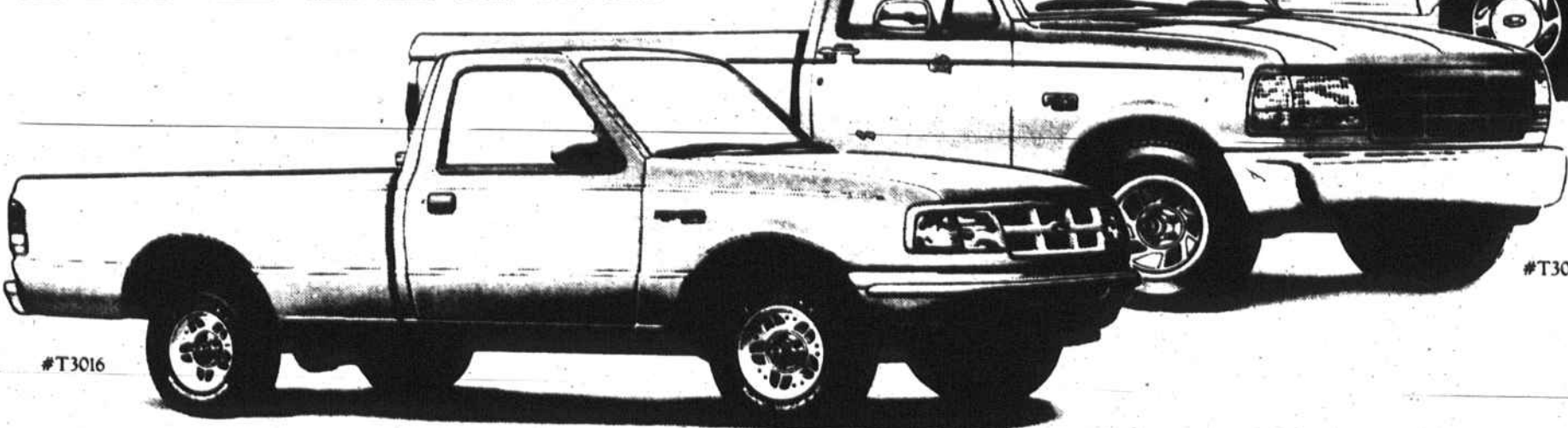


# FORD MONTH

**#1 SELLING TRUCK IN AMERICA!**



#T3016

#T3063

#T2891

#2024

Triad's Only Award Winning Dealership 12 Years In A Row.



1981, 1982, 1983, 1984, 1985, 1986, 1987, 1988, 1989, 1990 AND 1991 AND

**1992 AWARD DEALER**

Ranger XLT 4x2      F-150 XLT 4x2      Explorer XLT 4x4      Aerostar XL Plus

**\$3,000 Total Savings**

**Ford Ranger XLT 4x2 w/PEP 864E**

- Air Conditioning
- 2.3L EFI-4 Engine
- 5-Speed Manual Overdrive Transmission
- Power Steering
- Power Brakes w/Rear Wheel Anti-Lock
- Electronic AM/FM Stereo w/Cassette/Clock
- Interval Wipers
- Light Group
- Chrome Rear Step Bumper
- Accent Tape Strips
- Sliding Rear Window
- Deep Dish Cast Aluminum Wheels

#1 COMPACT PICKUP IN AMERICA

**\$3,330 Total Savings**

**FORD F-150 XLT 4X2 w/PEP 507A**

- 5.0 V-8 Engine
- Automatic Transmission
- Electronic AM/FM Stereo w/Cassette/Clock
- Tinted Glass
- Air Conditioning
- Power Locks & Windows
- Speed Control/Tilt Steering
- Light/Convenience Group
- Chrome Styled Wheels
- Set of 5 All-American P235/75R15 BSW Tires

#1 SELLING TRUCK IN AMERICA

**\$3,000 Total Savings**

**FORD EXPLORER XLT 4X4 w/PEP 941A**

- 4.0L EFI V-6 Engine
- Automatic Transmission
- Power Steering/Speed Control/Tilt Steering
- Anti-Lock Brakes
- Air Conditioning
- Electronic Premium AM/FM Stereo w/Cassette/Clock
- Power Equipment Group
- Rear Window Wiper/Washer/Defroster
- Cloth Captain's Chairs
- Luxury Wheels

#1 SPORT UTILITY VEHICLE IN AMERICA

**\$4,000 Total Savings**

**Ford Aerostar XL Plus w/PEP 401A**

- 3.0L EFI V-6 Engine
- Automatic Transmission
- Power Steering
- Power Brakes with Rear Wheel Anti-Lock
- Driver's Side Air Bag
- 7-Passenger Seating with Dual Captain's Chairs
- Electronic AM/FM Stereo with Clock
- Interval Wipers
- Air Conditioning
- Speed Control
- Tilt Steering Wheel
- And More

#1 FAMILY VALUE IN AMERICA

<p><b>1993 PROBE</b></p> <p><b>AUTOMATIC</b></p> <ul style="list-style-type: none"> <li>• 253-A PKG. • SPEED CONTROL • REAR DEFROSTER • AIR CONDITIONING • AM/FM CASSETTE W/PREMIUM SOUND • TILT WHEEL • 15" ALUMINUM WHEELS.</li> </ul> <p><b>\$14,993*</b></p>	<p><b>1993 CROWN VICTORIA LX 4 DR. DUAL AIR BAGS</b></p> <p><b>#1500 REBATE</b></p> <ul style="list-style-type: none"> <li>• 113A PKG. • REAR WINDOW DEFROSTER • POWER LOCKS • POWER WINDOWS • SPEED CONTROL • CAST ALUM WHEELS • ILLUMINATED KEYLESS ENTRY SYSTEM • AM/FM CASSETTE • 4.6L OHC V-8 • DUAL AIR BAGS</li> </ul> <p><b>\$19,998*</b></p>	<p><b>1993 ESCORT 4 STYLES - 1 PRICE</b></p> <p><b>ALL EQUIPPED WITH:</b></p> <ul style="list-style-type: none"> <li>• AIR COND. • POWER STEERING • AM/FM CASSETTE • LUXURY WHEEL COVERS</li> </ul> <p><b>\$9,998*</b></p>	<p><b>ALL 1993 TAURUS'S IN STOCKS</b></p> <p><b>\$500 REBATE</b></p> <p><b>+ 6.85% APR</b></p> <p><b>#1 SELLER IN AMERICA!</b></p>	<p><b>1993 THUNDERBIRD LX</b></p> <ul style="list-style-type: none"> <li>• AUTOMATIC OVERDRIVE • AIR CONDITIONING • 3.8 V-6 • POWER ANTENNA • POWER WINDOWS • POWER SEAT • CAST ALUMINUM WHEELS • SPEED CONTROL • AM/FM CASSETTE • REAR WINDOW DEFROSTER</li> </ul> <p><b>\$14,992*</b></p>	<p><b>1993 MUSTANG LX</b></p> <ul style="list-style-type: none"> <li>• 2.3 EFI ENGINE • AM/FM CASSETTE W/PREMIUM SOUND • SPEED CONTROL • CAST ALUMINUM WHEEL</li> </ul> <p><b>\$9,996*</b></p>
--	---	--	--	---	--

## PRE-OWNED TRADE-INS AND FORD FACTORY PROGRAM CARS

<p><b>'92 DODGE SHADOW CONV.</b> #T-3045. Auto, A/C, P. windows. <b>\$11,995*</b></p>	<p><b>1989 JEEP WRANGLER 4X4</b> #T-2847A. 4 cyl., 5-speed, stereo. <b>\$8,995*</b></p>	<p><b>1988 THUNDERBIRD LX</b> #8278A. V-6, auto, A/C, all power. <b>\$7,995*</b></p>	<p><b>7.9% APR - LIMITED TIME ONLY! GOOD THRU 6-12-93</b></p> <p><b>1993 MERCURY TRACER</b> 4-door, auto, A/C, AM/FM cassette, R. def. <b>SALE PRICE \$9,770*</b> <b>\$184<sup>08</sup> PER MONTH</b> 7.9% APR @ 60 mos. Total of payments \$11,044.80. Fin. Chg. \$1,944.80. On approved credit.</p>	<p><b>1992 TEMPO GL</b> 4-door, auto, A/C, PW, PL, PS, cruise, AM/FM cassette, R. def. <b>\$575 DOWN</b> <b>\$174<sup>31</sup> PER MONTH</b> 7.9% APR @ 60 mos. Total of payments \$9,412.74. Fin. Chg. \$1,512.74. On approved credit.</p>					
<p><b>1983 CHEV. CAPRICE CLASSIC</b> #8008A. V-8, auto, A/C, PW, PL, 69,000 miles, extra sharp. <b>\$5,995*</b></p>	<p><b>1989 HONDA CIVIC</b> #U1562A. 5 speed, A/C, stereo. <b>\$6,995*</b></p>	<p><b>1989 MERCURY TRACER</b> #7998A. 5 speed, A/C, sunroof, stereo. <b>\$5,995*</b></p>	<p><b>1991 MUSTANG LX</b> #T2309A. 5 speed, A/C, PW, PL, stereo. <b>SALE PRICE \$6,899</b> <b>\$599 DOWN</b> <b>\$153<sup>50</sup> PER MONTH</b> 7.9% APR @ 60 mos. Total of payments \$7,368.00. Fin. Chg. \$1,068.00. On approved credit.</p>	<p><b>1992 FORD RANGER XLT</b> 4 cyl., 5 speed, A/C, alum. wheels. <b>SALE PRICE \$8,499*</b> <b>\$599 DOWN</b> <b>\$174<sup>31</sup> PER MONTH</b> 7.9% APR @ 60 mos. Total of payments \$9,412.74. Fin. Chg. \$1,512.74. On approved credit.</p>					
<p><b>1991 RANGER XLT 4X4</b> #T-3018A. V-6, A/C, auto, bed liner. <b>\$10,995*</b></p>	<p><b>1985 FORD XLT 4X4</b> #8356B. V-8, auto, A/C, PW. <b>\$8,995*</b></p>	<p><b>1989 FORD XLT CLUB WAG.</b> #U1560A. 15 pass., V-8, auto, A/C. <b>\$10,995*</b></p>	<p><b>6 - '92 TAURUS GL</b> V-6, AUTO, PW, P. SEATS, CRUISE, PL, AM/FM CASS., A/C <b>\$12,500*</b></p>	<p><b>3 - '92 FORD CROWN VICTORIA LX 4 DR.</b> V8, Auto, AC, all power, alu, whls. <b>\$15,990*</b></p>	<p><b>2 - '93 AEROSTAR XLT EXTENDED VANS</b> V-6, auto, dual A/C, PW, PL, cruise, tilt, AM/FM cass., r. def. #U1497, #U1499 <b>\$17,485*</b></p>	<p><b>'92 MUSTANG LX CONVERTIBLE</b> 5.0 V-8, A/C, special red, w/leather white top, 12,000 miles <b>\$19,990*</b></p>	<p><b>'92 FORD XLT CLUB WAGON</b> #U1587. V-8, auto, dual air cond., p. windows, p. locks, tilt, cruise, stereo w/cass., 15 pass., privacy glass. <b>\$19,690</b></p>	<p><b>'92 FORD AEROSTAR XL EXT VAN</b> #U1513. V-6, auto, dual air cond., p. windows, p. locks, tilt, cruise, r. def., stereo w/cass., 7 pass. <b>\$16,270</b></p>	<p><b>2 - '93 MUSTANG LX CONV.</b> 4 cyl., auto, A/C, P/W, P/L, cruise, stereo w/cass., luggage rack. #U1577 U1578 <b>\$15,375</b></p>

'90 ACURA LEGEND L 2 DR. V6, auto, AC, sunroof, leather, all power. #T2614A <b>\$21,995</b>	'92 FORD EXPLORER EDDIE BAUER 2 DR V6, Auto, AC, Leather, All power, sunroof #T2694A <b>\$21,995</b>	'92 CHEV. CORSICA 4-DR. LT V-6, auto, A/C, stereo. #U1453A <b>\$9995</b>
'91 HONDA PRELUDE SI Auto, A/C, sunroof, P/W, PL #T2910A <b>\$16,995</b>	'92 FORD EXPLORER XLT 4 dr. 4x4, V6, Auto, AC, PW, PL #T2906A <b>\$19,995</b>	'92 FORD RANGER V6, 5 spd., A/C, stereo. #T8520A <b>\$9995</b>
'93 PROBE GT Loaded, 14,000 miles #T2735A <b>\$16,995</b>	'90 PLYMOUTH GRAND VOYAGER V-6, auto, dual A/C, all power. #8397A <b>\$13,995</b>	'89 MERCURY GRAND MARQUIS LS V-8, auto, A/C, all power. #T3121A <b>\$8995</b>
'92 FORD PROBE GL Auto, AC, stereo, 14,000 mi #8067A <b>\$12,995</b>	'92 CHEV. CHEYENNE LONG BED V6, auto, bed liner, extra nice. #U1421A <b>\$13,995</b>	'91 CHEVY S-10 12,204 miles, 5 speed, AM/FM #T2845B <b>\$8995</b>
'90 FORD CROWN VICT. LX 4-DR. V-8, auto, A/C, all power. #8308A <b>\$11,995</b>	'92 CHEV. S-10 CLUB CAB V6, 5 spd., AC, Bedliner #T2898A <b>\$12,995</b>	'91 FORD ESCORT STA. WAGON 5-spd., A/C, stereo. #8059A <b>\$8995</b>
'88 CADILLAC BROUGHAM 4DR. V8, Auto, AC, Leather, All power. #T2694AA <b>\$10,995</b>	'92 TOYOTA COROLLA DX 4-DR. Auto, AC, stereo. #T3007A <b>\$12,995</b>	'90 FORD ESCORT LX 2-DR. 5-spd., A/C, stereo, chrome whls. #7505A <b>\$5995</b>
'89 BUICK REGAL 2-DR. V-6, auto, AC, PW #T8514A <b>\$7995</b>	'91 CHEV. S-10 PICKUP 4X4 Tahoe pkg. V-6, auto, A/C, alum whls. #T3042A <b>\$11,995</b>	'90 GEO METRO A/C, 5-spd., stereo. #T3071A <b>\$4995</b>
'92 CHEV. BLAZER SILVERADO 4X4 V8, auto, AC, alu whls, all power. #T2629A <b>\$21,995</b>	'92 FORD RANGER XLT A/C, 5 speed, AM/FM, low miles, 1722 miles. #T2766A <b>\$10,995</b>	'86 FORD ESCORT STA. WAG. 5-spd., A/C, luggage rack. #8262B <b>\$3995</b>

**SERVICE DEPARTMENT HOURS: MON.-FRI. 7:30-7:30, SAT. 8:00-2:00**

Prices Do Not Include Tax, Tags & Title Fee. Dealer Retains Rebates If Any, On Approved Credit.

SERVING THE CAROLINAS SINCE 1967

# PARKWAY FORD

2104 PETERS CREEK PARKWAY, WINSTON-SALEM 724-5921 NCL NO. 703

Triad's Only Award Winning Dealership 12 Years In A Row.

1981, 1982, 1983, 1984, 1985, 1986, 1987, 1988, 1989, 1990 AND 1991 AND

**1992 AWARD DEALER**