

# PARKWAY FORD

## Declare Your Independence From High Prices...

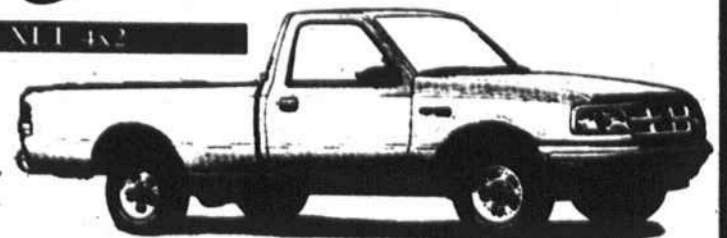
### 1993 TAURUS GL STATION WAGON

- 204 A PKG. • 3.8 EFI V-6
- POWER WINDOWS
- POWER LOCKS • POWER SEAT
- SPEED CONTROL • AUTOMATIC OVERDRIVE • REAR FACING THIRD SEAT • AM/FM CASSETTE.



**\$17,994\***

#8121TA



**\$2,800 Total Savings**

Ford Ranger XLT 4x2 w/PEP 864E  
#1 COMPACT PICKUP IN AMERICA

- Air Conditioning
- 2.3L EFI-4 Engine
- 5-Speed Manual Overdrive Transmission
- Power Steering
- Power Brakes w/Rear Wheel Anti-Lock
- Electronic AM/FM Stereo w/Cassette/Clock
- Interval Wipers
- Light Group
- Chrome Rear Step Bumper
- Accent Tape Strips
- Sliding Rear Window
- Deep Dish Cast Aluminum Wheels



**\$3,300 Total Savings**

FORD F-150 XLT 4X2 w/PEP 507A

- 5.0 V-8 Engine
- Automatic Transmission
- Electronic AM/FM Stereo w/Cassette/Clock
- Tinted Glass
- Air Conditioning
- Power Locks & Windows
- Speed Control/Tilt Steering
- Light/Convenience Group
- Chrome Styled Wheels
- Set of 5 All-American P235/75R15 BSW Tires

### 1993 ESCORT 4 STYLES - 1 PRICE

- AIR COND. • POWER STEERING • AM/FM CASSETTE
- LUXURY WHEEL COVERS



**\$9,998\***



**\$4,000 Total Savings**

Ford Aerostar XL Plus w/PEP 401A

- 3.0L EFI V-6 Engine
- Automatic Transmission
- Power Steering
- Power Brakes with Rear Wheel Anti-Lock
- Driver's Side Air Bag
- 7-Passenger Seating with Dual Captain's Chairs
- Electronic AM/FM Stereo with Clock
- Interval Wipers
- Air Conditioning
- Speed Control
- Tilt Steering Wheel
- And More



### 1993 PROBE SPORT EDITION OPTION

- REMOTE KEYLESS ENTRY • TILT WHEEL • SPEED CONTROL
- PREMIUM SOUND W/CASSETTE • 5 SPEED OVERDRIVE

**\$14,996\***

**\$3,000 Total Savings**

FORD EXPLORER XLT 4X4 w/PEP 941A

- 4.0L EFI V-6 Engine
- Automatic Transmission
- Power Steering/Speed Control/Tilt Steering
- Anti-Lock Brakes
- Air Conditioning
- Electronic Premium AM/FM Stereo w/Cassette/Clock



### BRAND NEW 1993 CROWN VICTORIAS

**\$3,300**

PRICE REDUCTION!

### 1993 THUNDERBIRD LX

**\$14,992\***



- AUTOMATIC OVERDRIVE • AIR CONDITIONING • 3.8 V-6 • POWER ANTENNA • POWER WINDOWS • POWER SEAT • CAST ALUMINUM WHEELS • SPEED CONTROL • AM/FM CASSETTE • REAR WINDOW DEFROSTER



**1993 MUSTANG GT CONVERTIBLE \$20,199\***

- 5 SPEED • 5.0 EFI HIGH OUTPUT V-8 • SPEED CONTROL • TRACTION LOK AXLE
- POWER DRIVER'S SEAT • LEATHER SEATS • PREMIUM SOUND - CD PLAYER

## PRE-OWNED TRADE-INS AND FORD FACTORY PROGRAM CARS

<p><b>1991 FORD EXPLORER XLT</b> #8487A. V-6, auto., A/C, PW, PL. <b>\$18,995*</b></p>	<p><b>1990 BUICK LESABRE</b> #T3198A. Auto., A/C, all power. <b>\$10,995*</b></p>	<p><b>1991 NISSAN SENTRA XE</b> #T3168A. 5-speed, A/C, AM/FM stereo. <b>\$7,995*</b></p>
<p><b>1989 BUICK REGAL 2 DOOR</b> #T8514A. V-6, auto., A/C, PW. <b>\$7,995*</b></p>	<p><b>1991 PONTIAC GRAND AM</b> #8428AA. 5 speed, A/C, AM/FM stereo. <b>\$9,995*</b></p>	<p><b>1990 MERCURY GRAND MARQUIS LS</b> #T3086A. V-8, auto., A/C, all power. <b>\$11,995*</b></p>
<p><b>1991 HONDA PRELUDE SI</b> #T2910A. Auto., A/C, sunroof, PW, PL. <b>\$16,995*</b></p>	<p><b>1990 ACURA LEGEND</b> #T2614A. V-6, auto., A/C, sunroof, leather, all power. <b>\$19,995*</b></p>	<p><b>1992 CHEV. CORSICA LT</b> #U1453A. V-6, auto., A/C, AM/FM stereo. <b>\$9,995*</b></p>

<p><b>7.9% APR - LIMITED TIME ONLY!</b> GOOD THRU 7-31-93</p> <p><b>6 — 1993 MERCURY TRACER</b> 4-door, auto, A/C, AM/FM cassette, R. def. <b>SALE PRICE \$9,770*</b> <b>\$670 DOWN</b> <b>\$184<sup>08</sup> PER MONTH</b> 7.9% APR @ 60 mos. Total of payments \$11,044.80, Fin. Chg. \$1,944.80. On approved credit.</p>	<p><b>2 — 1992 TEMPO GL</b> 4-door, auto, A/C, PW, PL, PS, cruise, AM/FM cassette, R. def. <b>SALE PRICE \$8475*</b> <b>\$575 DOWN</b> <b>\$174<sup>31</sup> PER MONTH</b> 7.9% APR @ 54 mos. Total of payments \$9,412.74. Fin. Chg. \$1,512.74. On approved credit.</p>
<p><b>2 — 1992 MERCURY COUGARS</b> V6, Auto, AC, PW, Pseats, PL, tilt, cruise, alum wheels, rear defroster <b>SALE PRICE \$12,770</b> <b>\$670 DOWN</b> <b>\$266.98 PER MONTH</b> 7.9% APR @ 54 mo. total of payments \$14,416.92 Fin chg. \$2,316.92 on approved credit</p>	<p><b>1993 MUSTANG CONVERTIBLE</b> Auto., A/C, PW, PL. <b>SALE PRICE \$14,990</b> <b>\$990 DOWN</b> <b>\$283<sup>20</sup> PER MONTH</b> 7.9% APR @ 60 mos. Total of payments \$16,992.00. Fin. Chg. \$2,992.00. On approved credit.</p>

<p><b>13 — '92 TAURUS GL</b> V-6, AUTO, PW, P SEATS, CRUISE, PL, AM/FM CASS., A/C <b>\$12,500*</b></p>	<p><b>1 — '92 FORD CROWN VICTORIA LX 4 DR.</b> V8, Auto, AC, all power, alu, whls. <b>\$15,990*</b></p>	<p><b>'92 MERCURY TOPAZ G.S. 4 DR.</b> Auto., A/C, P, windows, P, locks, P, seats, stereo w/cass., elec. r. def. <b>\$8675*</b></p>	<p><b>'92 FORD MUSTANG LX HATCHBACK</b> #U1500. Auto, A/C, sunroof, P, windows, P, locks, stereo w/cass., elec. R. def. <b>\$9,990*</b></p>	<p><b>1 — '92 FORD XLT CLUB WAGON</b> #U1587. V-8, auto, dual air cond., p. windows, p. locks, tilt, cruise, stereo w/cass., 15 pass., privacy glass. <b>\$19,690</b></p>	<p><b>AEROSTAR SALE</b> Stk. #U1497. — '93 XLT EXT. V6, auto., A/C, 7 PASS..... <b>\$16,990</b> Stk. #U1517. — '92 XL EXT. V6, auto., A/C, 7 PASS..... <b>\$15,990</b> Stk. #U149A. — '92 XL V6, auto., A/C, 7 PASS..... <b>\$13,770</b></p>	
<p>'92 FORD PROBE GL Auto, AC, stereo, 14,000 mi. #8415A <b>\$12,995</b></p>	<p>'92 TOYOTA COROLLA DX 4-DR. Auto, AC, stereo. #T3007A <b>\$12,995</b></p>	<p>'91 MERCURY TRACER Auto, A/C, air cond., stereo, cruise. #8405A <b>\$8995</b></p>	<p>'92 FORD F-150 XLT 4 WH. DR. V8, Auto, A/C, PW, PL. #T2598A <b>\$17,995</b></p>	<p>'88 FORD T-BIRD V6, auto, A/C, all power. #8278A <b>\$7995</b></p>	<p>'91 FORD EXPLORER XL SPORT V6, 5-sp., A/C, PW, PL, 4X4 #T8506A <b>\$15,995</b></p>	
<p>'89 FORD T-BIRD SUPER COUPE Auto, AC, stereo, all power. #U1590 <b>\$11,995</b></p>	<p>'87 FORD T-BIRD V-6, auto, A/C, P, windows, P, seats. #7968A <b>\$6995</b></p>	<p>'83 CHEV. CAPRICE CLASSIC 4 DR. V8, auto., A/C, PW, PL, 69,100 miles. #8008A <b>\$5995</b></p>	<p>'92 CHEV. CHEYENNE LONG BED V6, auto, bed liner, extra nice. #U1421A <b>\$13,995</b></p>	<p>'83 CHEV. CAMARO RS V-6, auto, AC. #T2709B <b>\$11,995</b></p>	<p>'92 CHEV. S-10 CLUB CAB V6, 5 spd., A/C, bedliner. #T2898A <b>\$12,995</b></p>	
<p>'93 FORD ESCORT GT 5-sp., stereo, air cond., cruise. #8308A <b>\$11,995</b></p>	<p>'90 FORD ESCORT LX 2-DR. 5-sp., A/C, stereo, chrome whls. #7505A <b>\$5995</b></p>	<p>'90 GEO METRO A/C, 5-sp., stereo. #T3073A <b>\$4995</b></p>	<p>'92 FORD F-150 L BED 6 cyl., auto, air cond. #8303A <b>\$12,995</b></p>	<p>'91 SATURN SL2 4 DOOR 5-sp., AC, PW, stereo. #8505A <b>\$11,995</b></p>	<p>'88 FORD BRONCO II EDDIE BAUER V8, 5-sp., AC, PW, PL, 4X4 #8142B <b>\$10,995</b></p>	
<p>'88 CADILLAC BROUGHAM V8, auto, AC, leather, all power. #T2694A <b>\$10,995</b></p>	<p>'85 CHRYSLER LEBARON 4 DR. Auto, A/C, stereo, 25,000 miles. #8491A <b>\$3995</b></p>	<p>'92 FORD EXPLORER EDDIE BAUER 2 DR V6, Auto, AC, Leather, All power, sunroof #T2694A <b>\$21,995</b></p>	<p>'92 FORD RANGER XLT V6, 5-sp., A/C, bed liner. #8038A <b>\$10,995</b></p>	<p>'91 FORD TAURUS GL 4-DR. V-6, auto, AC, p. seats, p. windows, p. locks. #U1430 <b>\$10,995</b></p>	<p>'92 FORD EXPLORER XLT 4 DR. 4x4, V6, Auto, AC, PW, PL. #T2906A <b>\$19,995</b></p>	
<p>'92 FORD EXPLORER XLT 4 WH. DR. V8, Auto, A/C, PW, PL, 60,000 miles. #8164A <b>\$5995</b></p>	<p>'91 CHEVY S-10 12,204 miles, 5 speed, AM/FM. #T2845B <b>\$8995</b></p>	<p>'86 FORD L.T.D. COUNTRY SQUIRE STA. WAG. V8, auto, AC, P/W, PL, 60,000 miles. #8164A <b>\$5995</b></p>	<td></td> <td></td> <td></td>			

SERVICE DEPARTMENT HOURS: MON.-FRI. 7:30-7:30, SAT. 8:00-2:00

Prices Do Not Include Tax, Title Fee, Dealer Rebates If Any. On Approved Credit.

SERVING THE CAROLINAS SINCE 1967

# PARKWAY FORD

2104 PETERS CREEK PARKWAY, WINSTON-SALEM 724-5921

Triad's Only Award Winning Dealership 12 Years In A Row.

DISTINGUISHED ACHIEVEMENT FOR QUALITY

1992 AWARD DEALER