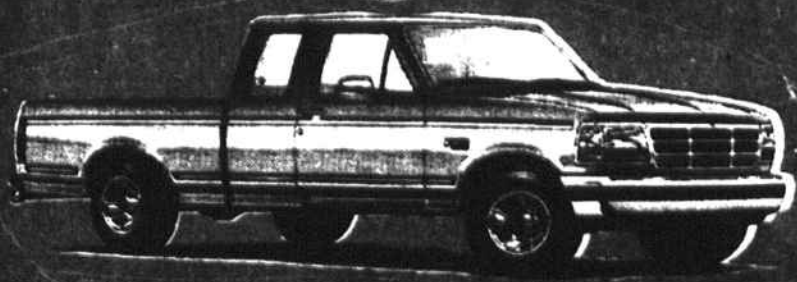


# NOVEMBER IS TRUCK MONTH — PARKWAY FORD IS THE TRUCK AUTHORITY!



**\$18,998**



**\$10,996**



**\$25,999**



**\$24,945**



**\$15,199**



**\$9,999**

**\$229 PER MONTH**



**\$14,988**

## PRE-OWNED TRADE-INS AND FORD FACTORY PROGRAM CARS

<p><b>1993 CHEV. S-10 XTRA CAB TAHOE</b> #T4000A. V6, 5 spd., A.C. bed liner.</p>			<p><b>1993 OLDS CUTLASS SUPREME SL</b> #T4169A. Auto, AC, All power</p>			<p><b>1991 GEO STORM</b> #1058B. 5-spd., air cond., stereo.</p>			<b>7.9% ON ALL '93 PROGRAM CARS</b> <small>ON APPROVED CREDIT</small>										
<p><b>1992 CHEV. CORSICA LT</b> #8721A. Auto, AC, PW, PL</p>			<p><b>1992 ACURA INTEGRA</b> #T4190A. 5 spd., AC, PW, PL</p>			<p><b>1992 FORD AEROSTAR CARGO VAN</b> #T4252A. V6, auto., air cond.</p>			<b>2-1993 AEROSTAR XLT EXTENDED LENGTH - 7 PASSENGER</b> V-6, auto, dual A/C, PW, PL, tilt, cruise, r. def., AM/FM cassette. <b>\$15,990</b>			<b>2-1993 XLT CLUB WAGONS 15 PASSENGER</b> V-8, auto, dual A/C, PW, PL, p. seat, tilt, cruise, AM/FM cassette. <b>\$19,990</b>							
<p><b>1992 NISSAN KING CAB</b> #T2088A. 5 spd., AC, stereo</p>			<p><b>1993 FORD AEROSTAR EDDIE BAUER EXT</b> #T4196A. V-6, auto, dual A/C, PW, PL</p>			<p><b>1992 CAMARO R.S.</b> #8850A. V8, auto., air cond., PW, PL</p>			<b>1993 FORD TAURUS GL WAGON</b> #U1688. V6, Auto, Air, PW, PL, luggage rack, cruise, stereo w/cass. <b>\$15,990</b>			<b>1993 MERCURY SABLE GS 4 DR. OR 1993 TAURUS GL 4 DR.</b> V6, Auto, AC, PW, PL, PS, tilt, cruise, stereo, elect. window def. 20 TO CHOOSE FROM <b>\$13,990</b>							
<b>'92 TOYOTA COROLLA DX 4-DR.</b> Auto, A/C, stereo. #T3007A <b>\$12,995</b>		<b>'91 FORD ESCORT LX STA. WAGON</b> Auto, A/C, stereo #8743A <b>\$7995</b>		<b>'90 FORD F-150</b> V-8, auto, A/C, stereo #U1746 <b>\$12,995</b>		<b>'91 CHEV. LUMINA Z-34</b> V-6, auto, A/C, PW. #8672C <b>\$12,995</b>		<b>'89 CHEV. CAPRICE STA. WAGON</b> V-8, auto, A/C, PW, PDL #1091A <b>\$7995</b>		<b>'91 FORD F-150 XLT LARIAT</b> 6 cyl, 5 spd, Air cond, Stereo #T4070A <b>\$11,995</b>		<b>'93 FORD ESCORT LX 4 DR.</b> 5 spd., A/C, stereo. #U1675A <b>\$10,995</b>		<b>'89 TOYOTA TERCEL 2 DR.</b> Auto., air cond., stereo. #8868-A <b>\$5995</b>		<b>'93 FORD RANGER XLT</b> 5 spd., A/C, alum. wheels. #8684A <b>\$10,995</b>			
<b>'92 MITSUBISHI ECLIPSE</b> 5 spd., Air cond., sunroof #T4168B <b>\$10,995</b>		<b>'87 FORD MUSTANG</b> Auto., A/C, PL #T4193A <b>\$4995</b>		<b>'92 FORD RANGER XLT</b> V6, 5 speed, AC, aluminum wheels #T4084B <b>\$9995</b>		<b>'91 HONDA CIVIC LX 4 DR.</b> Auto, A/C, PW, PL, 22,000 miles. #T4163A <b>\$10,995</b>		<b>'85 BUICK REGAL 2 DR.</b> V6, Auto, 2 Dr. #1025A <b>\$4995</b>		<b>'92 FORD RANGER XLT</b> 5 spd., A/C, alum. wheels, bedliner. #8433A <b>\$9995</b>		<b>'92 MITSUBISHI PICKUP</b> AM/FM stereo, 4 speed manual, 15,000 miles. #8828A <b>\$7995</b>		<b>'89 FORD MUSTANG LX</b> 5 spd., A/C, PW, PL. #8853A <b>\$7995</b>		<b>'90 FORD AEROSTAR XL 7 PASS</b> V6, auto., A/C, 7,000 mi. #T4228A <b>\$14,995</b>		<b>'89 FORD RANGER XLT</b> 5 spd., A/C, bed liner. #T3218B <b>\$6995</b>	
<b>'91 MERCURY CAPRI CONV.</b> 5 spd., Air cond., Stereo #T4066A <b>\$9995</b>		<b>'92 FORD F-150 XLT LARIAT</b> V-8, auto, A/C, PW, PL, alum wheels. #T4494A <b>\$13,995</b>		<b>'90 PLY. GRAND VOYAGER LE</b> V6, auto., A/C, PW, PL. #T4240A <b>\$12,995</b>		<b>'89 CHEV. S-10 PICKUP</b> 5-spd., AC, Sliding R. Window #8615A <b>\$6995</b>		<b>SERVICE DEPARTMENT HOURS: MON.-FRI. 7:30-7:30, SAT. 8:00-2:00</b>											



2104 PETERS CREEK PARKWAY, WINSTON-SALEM 724-5921



1992 AWARD WINNER